

8382 S. MASON DRIVE
UNIT C
NEWAYGO, MICHIGAN

RETAIL FOR LEASE
1,250 Square Feet Available



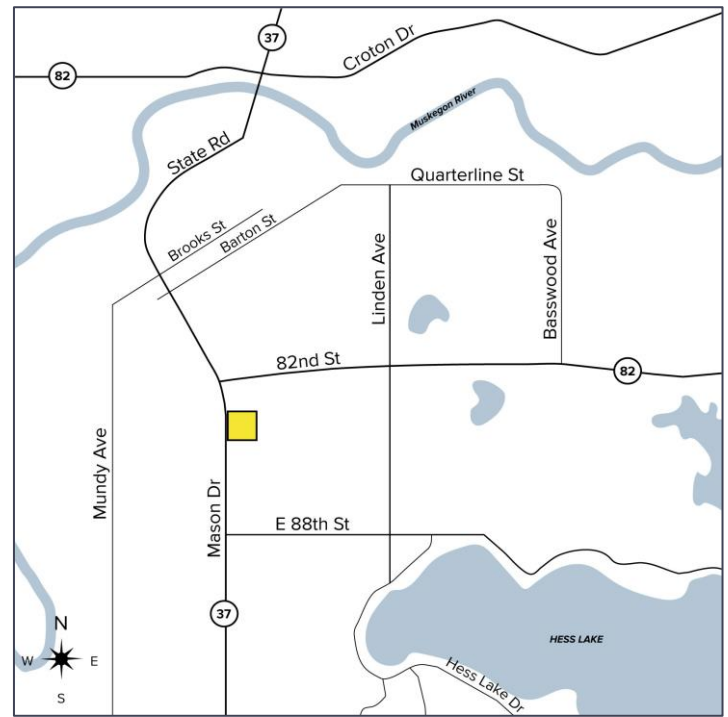
**SIGNATURE
ASSOCIATES**
KNOW SIGNATURE | KNOW RESULTS

OUTSTANDING RETAIL SPACE



PROPERTY FEATURES

- 1,250 square feet available
- 10' ceiling height
- Zoned C-1
- Located on a busy entrance to Newaygo's business district
- Warehouse and yard space possible
- 2% annual increase
- Lease Rate: \$1,300/month Modified Gross+Utilities



For more information, please contact:

JOE RIZQALLAH
(616) 235 6007
jrizzqallah@signatureassociates.com

RICK BIRDSALL
(248) 799 3145
rbirdsall@signatureassociates.com

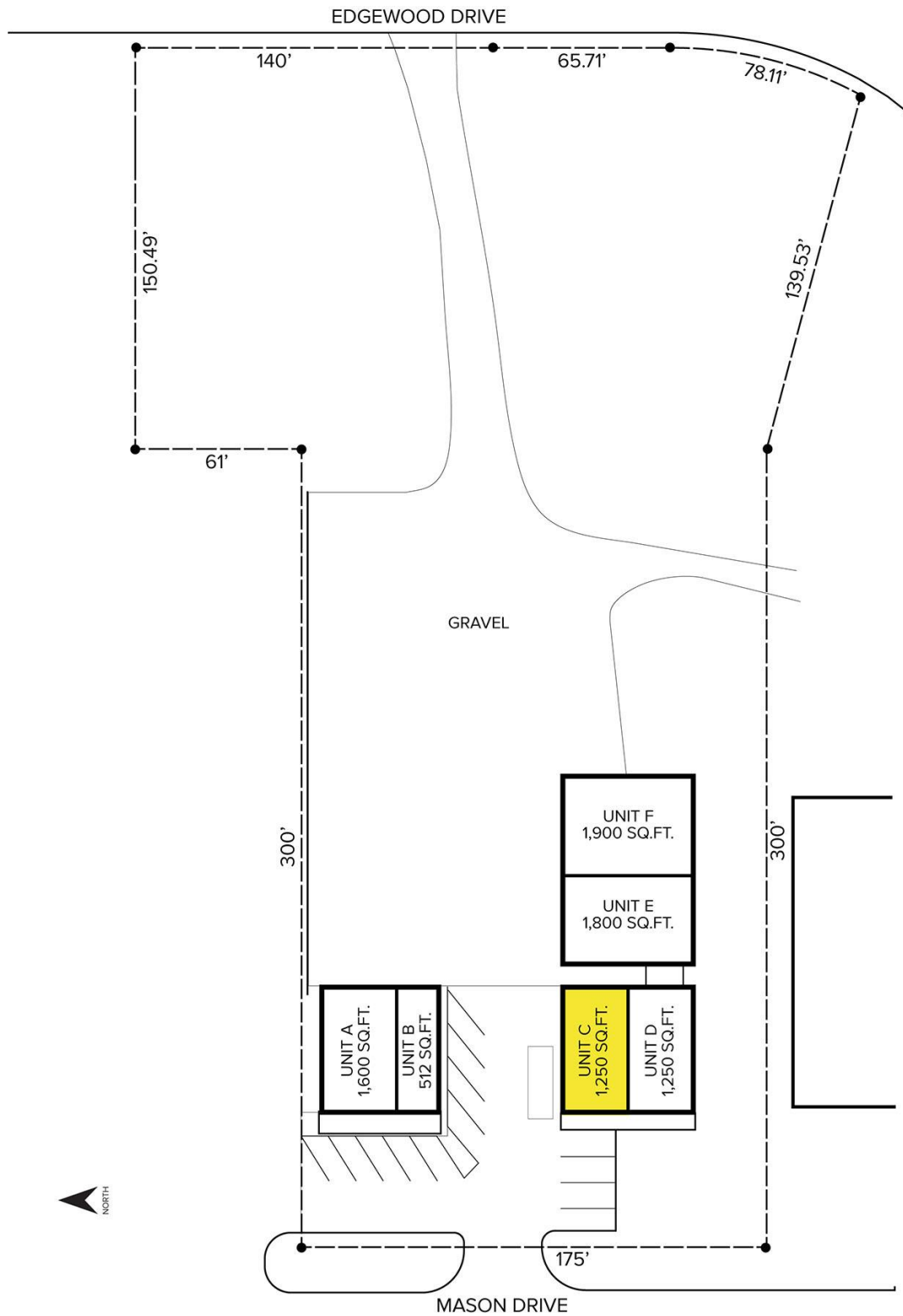
SIGNATURE ASSOCIATES
One Towne Square, Suite 1200
Southfield, MI 48076
www.signatureassociates.com

8382 S. Mason Drive – Newaygo, Michigan

Retail For Lease

1,250
Square Feet
AVAILABLE

Site Plan



For more information, please contact:

JOE RIZQALLAH

(616) 235 6007

jrizzqallah@signatureassociates.com

RICK BIRDSALL

(248) 799 3145

rbirdsall@signatureassociates.com

SIGNATURE ASSOCIATES

One Towne Square, Suite 1200

Southfield, MI 48076

www.signatureassociates.com

8382 S. Mason Drive – Newaygo, Michigan

Retail For Lease

1,250
Square Feet
AVAILABLE

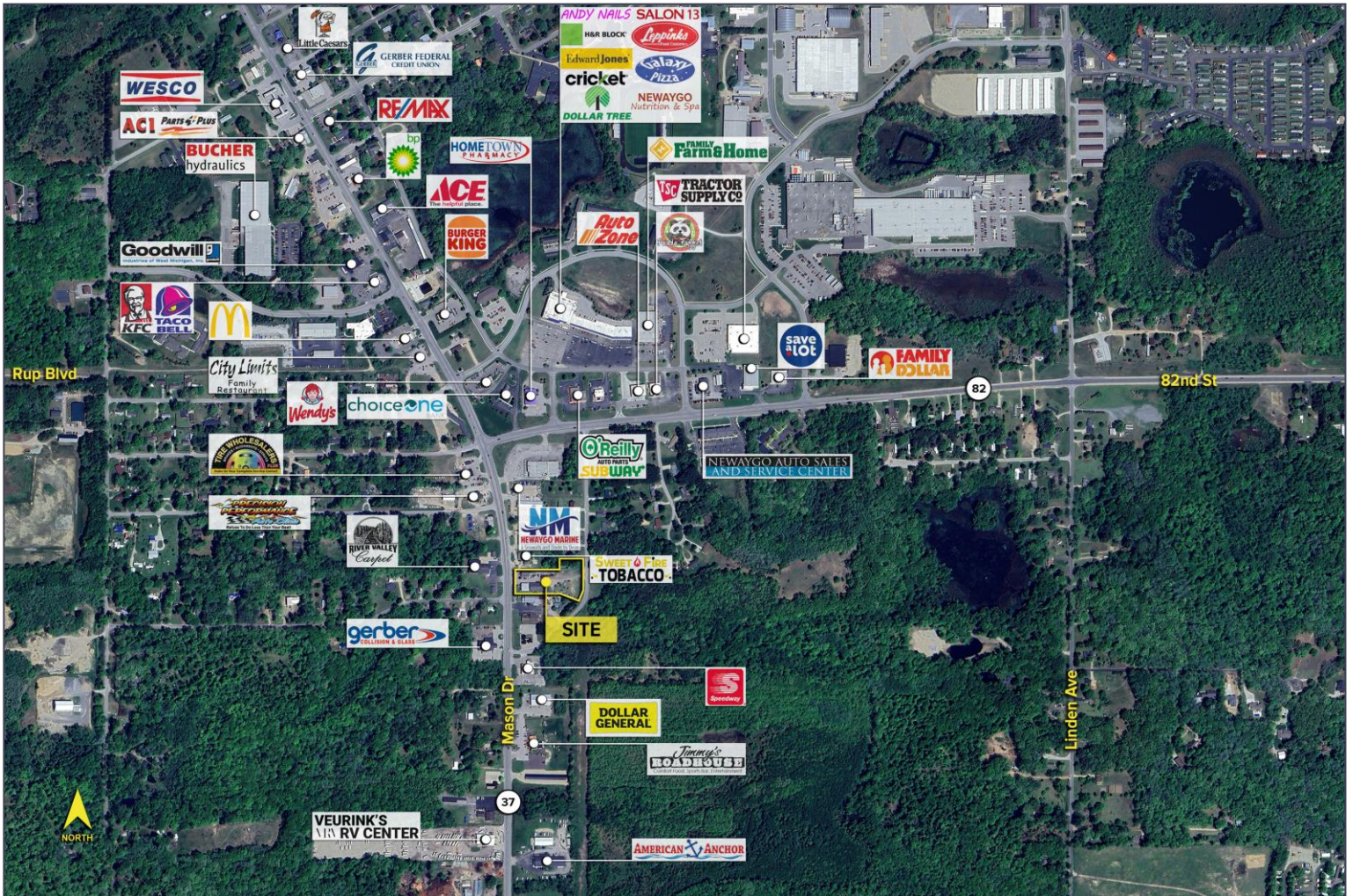


DEMOGRAPHICS

	POPULATION	MED. HH INCOME
1 MILE	1,850	\$52,951
3 MILE	6,572	\$64,796
5 MILE	11,449	\$65,704

TRAFFIC COUNTS (TWO-WAY)

13,115	Mason Dr. S of 82 nd St.
15,970	Mason Dr. N of 82 nd St.
5,993	82 nd St. E of Mason Dr.



For more information, please contact:

JOE RIZQALLAH
(616) 235 6007
jrizzqallah@signatureassociates.com

RICK BIRDSALL
(248) 799 3145
rbirdsall@signatureassociates.com

SIGNATURE ASSOCIATES
One Towne Square, Suite 1200
Southfield, MI 48076
www.signatureassociates.com