



NEWMARK

**SHAWN
KELLENBERGER**

408.987.4170
skellenberger@ngkf.com
RE LIC #01706215

**MICHAEL
SAIGN**

408.982.8403
msaign@ngkf.com
CA RE LIC #01706668

**JEFF
ARRILLAGA**

408.982.8478
JArrillaga@ngkf.com
CA RE LIC #00935379



park point

is a **30-acre premiere headquarters opportunity** located in the heart of the Silicon Valley. Conveniently situated adjacent to Highways 237 and 880, VTA light rail and the new Milpitas Bart Station, Park Point offers an optimal location for companies looking to **recruit and retain** top Bay Area talent from the East Bay, Peninsula, and South Bay markets.

Park Point is a three building corporate campus consisting of one two-story and two three-story steel-framed buildings totaling **±471,877 sf**. Additionally, the project can be expanded to create an additional ±100,000 to ±250,000 sf new building that can be customized to accommodate a tenants specific office, lab, manufacturing/assembly or warehouse needs.

Park Point's **expansive outdoor amenity space** offers employees the opportunity to truly enjoy a work life balance focused around wellness without having to leave the campus. Park Point is truly one of the most **customizable, amenitized, efficient and flexible** large corporate campus opportunities of its size remaining in the Bay Area.

155 N. McCarthy Blvd.
±176,875 sf

135 N. McCarthy Blvd.
±176,875 sf

115 N. McCarthy Blvd.
±118,127 sf

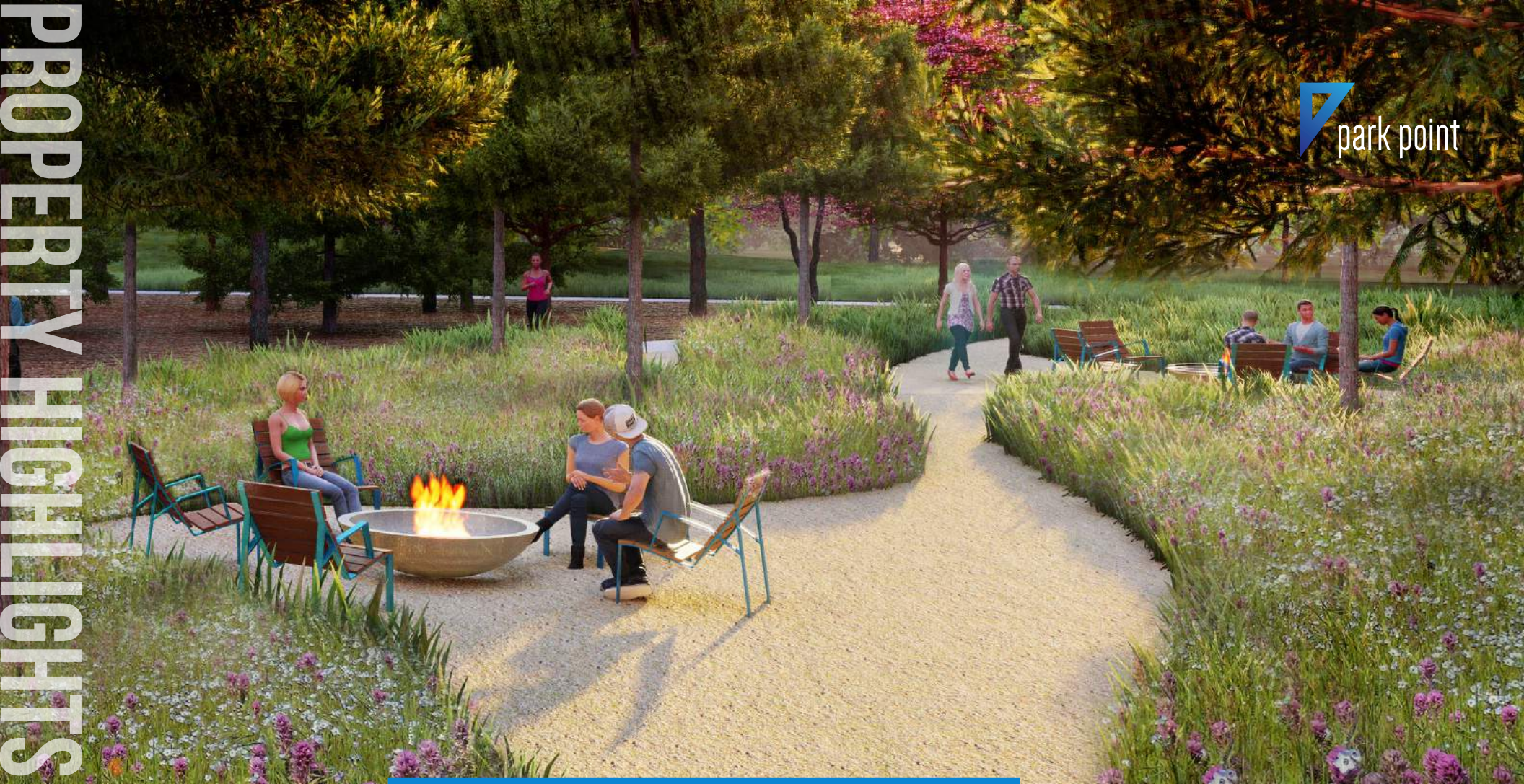


MODERNIZED ENTRANCES



NEW LOBBY RENOVATIONS





Presence

- ±471,877 sf Campus on 30-Acres
- Expandability to 700,000+ SF
- Conveniently Located on the 237 & 880 Corridor
- Exclusive Highly Visible 70' Tower Monument Sign Available

Efficiency

- Large ±59,000 sf Floorplates for Optimized Utilization
- Expansive Outdoor Collaboration and Amenity Areas
- Located on Jogging/Walking/Biking Trail

Identity

- Two-Story Lobby Entrances
- Major Building Signage and Campus Branding Opportunity
- Steel & Glass Class "A" Building Structure

Sustainability

- EV Charging Stations
- Expansive Natural Light
- Bike Storage Lockers
- Flexible Outdoor Work Environment

Functionality

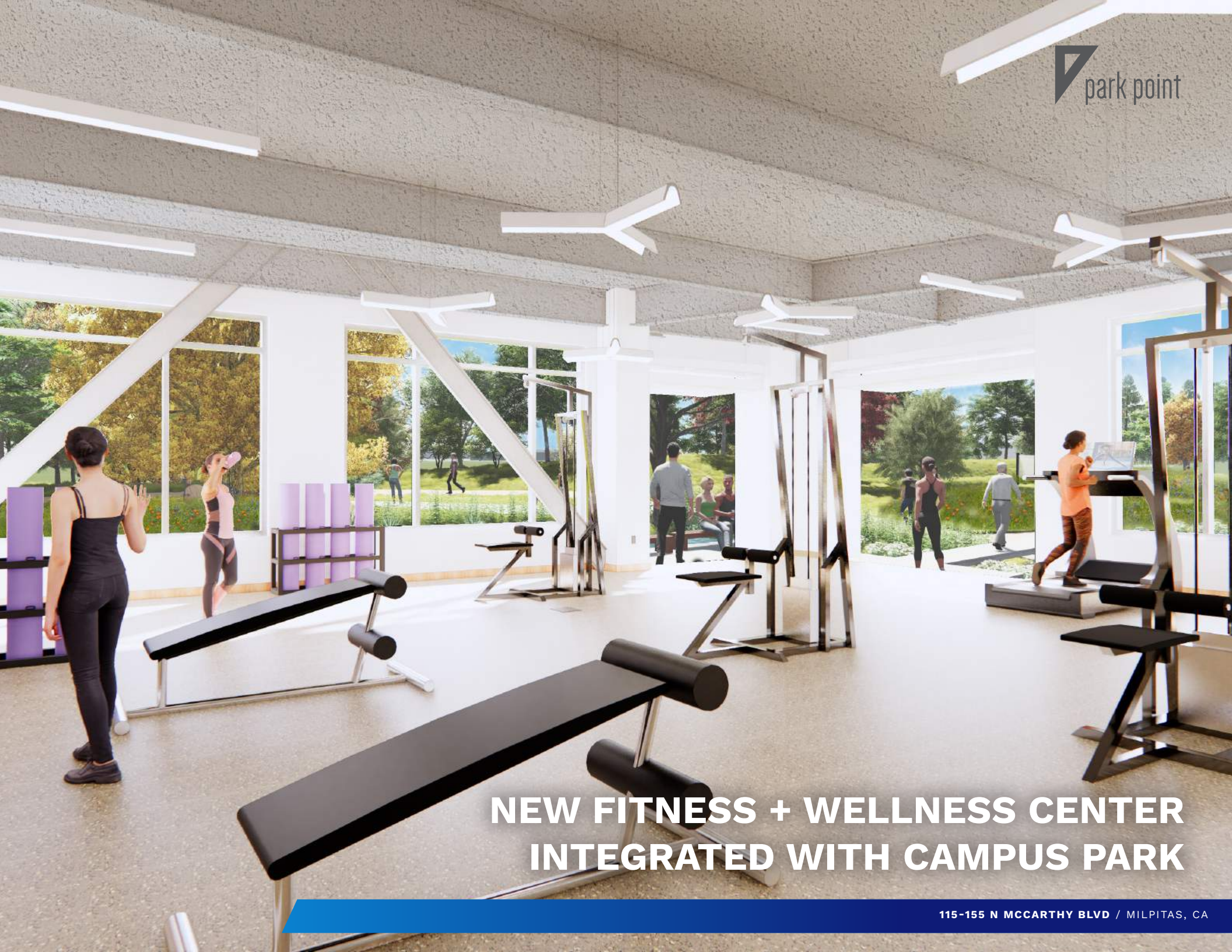
- Highly Flexible for Office, R&D and Manufacturing Uses
- Great Expansion Flexibility
- 9,920 Amps @ 480V of Total Power Capacity
 - 115 McCarthy - 4,800 Amps @ 480V 3 Phase
 - 135 & 155 McCarthy - 2,560 Amps @ 480V 3 Phase
- 3.3/1,000 On-Site Parking
- Dock Loading

Amenities

- Walking Distance to Over 50 Restaurant, Retail, Service and Hotel Amenities
- Showers, Basketball Court & Sport Court On-Site



4+ ACRE FLEXIBLE OUTDOOR PARK WORK ENVIRONMENT




NEW FITNESS + WELLNESS CENTER INTEGRATED WITH CAMPUS PARK

SITE OVERVIEW



115 N McCarthy

- 2 Story
- ±59,060 SF Floor Plates



SECOND FLOOR: View 360 Virtual Tour



FIRST FLOOR: View 360 Virtual Tour

135 & 155 N McCarthy

- 3 Story
- ±58,960 SF Floor Plates



135 N MCCARTHY, THIRD FLOOR: View 360 Virtual Tour



135 N MCCARTHY, SECOND FLOOR: View 360 Virtual Tour



135 N MCCARTHY, FIRST FLOOR: View 360 Virtual Tour



MILPITAS



MILPITAS STATION

SANTA CLARA

SAN JOSE

SUNNYVALE



BERRYESSA STATION

		LIGHT RAIL
		ACE
		CALTRAIN
		BART

AMENITIES

MILPITAS SQUARE

- RESTAURANTS & CAFES**
- 85c Bakery Cafe
 - Anjappar Chettinad Indian
 - Fantasia Coffee & Tea
 - Loving Hut
 - Mayflower Seafood
 - Pepper Lunch USA
 - QQ Noodle
 - Sizzling Stone
 - Thai Café Restaurant

- HOTELS**
- Crowne Plaza San Jose
 - Hampton Inn Milpitas

- BANKS**
- CTBC Bank
 - East West Bank
 - EverTrust Bank

MCCARTHY RANCH

- RESTAURANTS & CAFES**
- Banana Leaf
 - Blank Angus Steakhouse
 - Dishdash Grill
 - In-N-Out Burger
 - McDonald's
 - Starbucks
 - Shabuya
 - Sushi King
 - The Green Barn
 - Togo's

- HOTELS**
- Extended Stay America
 - Hilton Garden Inn
 - Larkspur Landing

- RETAIL**
- Ashley Home Store
 - AT&T, Verizon, T-Mobile
 - Best Buy
 - Dollar Tree
 - Mattress Firm
 - PetSmart
 - Ross Dress for Less
 - Wal-Mart

- BANKS**
- Bank of America
 - Charles Schwab
 - Wells Fargo

@first

- RESTAURANTS & CAFES**
- Coffee Bean & Tea Leaf
 - Chick-fil-A
 - Chipotle Mexican Grill
 - Fish's Wild Fish Grill
 - Five Guys
 - Panda Express
 - Panera Bread
 - Premier Pizza
 - Rok Steakhouse & Grill
 - SAJJ Falafel

- HOTEL**
- Courtyard San Jose

- RETAIL**
- CVS
 - Target

- BANKS**
- Chase
 - Fidelity
 - Union Bank





park point

**SHAWN
KELLENBERGER**

408.987.4170
skellenberger@ngkf.com
RE LIC #01706215

**MICHAEL
SAIGN**

408.982.8403
msaign@ngkf.com
CA RE LIC #01706668

**JEFF
ARRILLAGA**

408.982.8478
JArrillaga@ngkf.com
CA RE LIC #00935379

3055 OLIN AVENUE, SUITE 2200, SAN JOSE, CA 95128

135
NEWMARK

The distributor of this communication is performing acts for which a real estate license is required. The information contained herein has been obtained from sources deemed reliable but has not been verified and no guarantee, warranty or representation, either express or implied, is made with respect to such information. Terms of sale or lease and availability are subject to change or withdrawal without notice. 19-0298.11/20