

OFFICE BUILDING FOR LEASE



DL
Professional
Building
115

DL PROFESSIONAL BUILDING

115 W Willow St, Detroit Lakes, MN 56501



BRENT KUEHNE

701.219.1059
brent.kuehne@jbccommercial.com



JIM BUUS

701.306.7093
jim.buus@jbccommercial.com

OFFICE BUILDING FOR LEASE



DL PROFESSIONAL BUILDING

115 Willow St W, Detroit Lakes, MN 56501



OFFERING SUMMARY

Space Available: 1st Floor:
Suite 2 - 1,569 SF
2nd Floor
Suite 4 - 684 SF

Base Rent: Suite 2 - \$13.00 PSF
\$1,699.75/month
Suite 4 - \$12.00 PSF
\$684.00/month

Landlord Expenses: Heat
Electric
Taxes
Insurance

Tenant Expenses: Phone/Internet

Zoning: Commercial

PROPERTY OVERVIEW

Two-story professional office building located in the center of town with multiple spaces available!

NEIGHBORING BUSINESSES

- Sanford Clinic
- Midwest Printing
- M&H Gas Station
- Rossman Elementary



BRENT KUEHNE

701.219.1059
brent.kuehne@jbccommercial.com



JIM BUUS

701.306.7093
jim.buus@jbccommercial.com

OFFICE BUILDING FOR LEASE

DL PROFESSIONAL BUILDING

115 W Willow St, Detroit Lakes, MN 56501



BRENT KUEHNE

701.219.1059

brent.kuehne@jbccommercial.com



JIM BUUS

701.306.7093

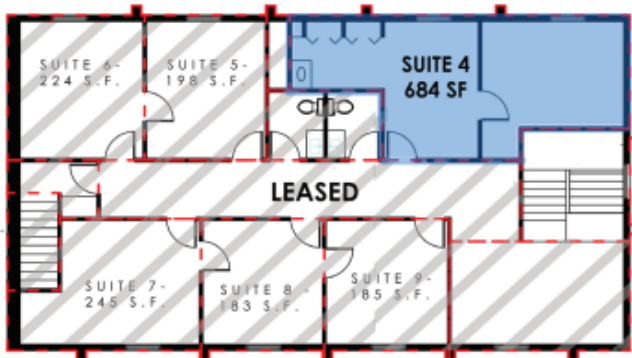
jim.buus@jbccommercial.com

OFFICE BUILDING FOR LEASE

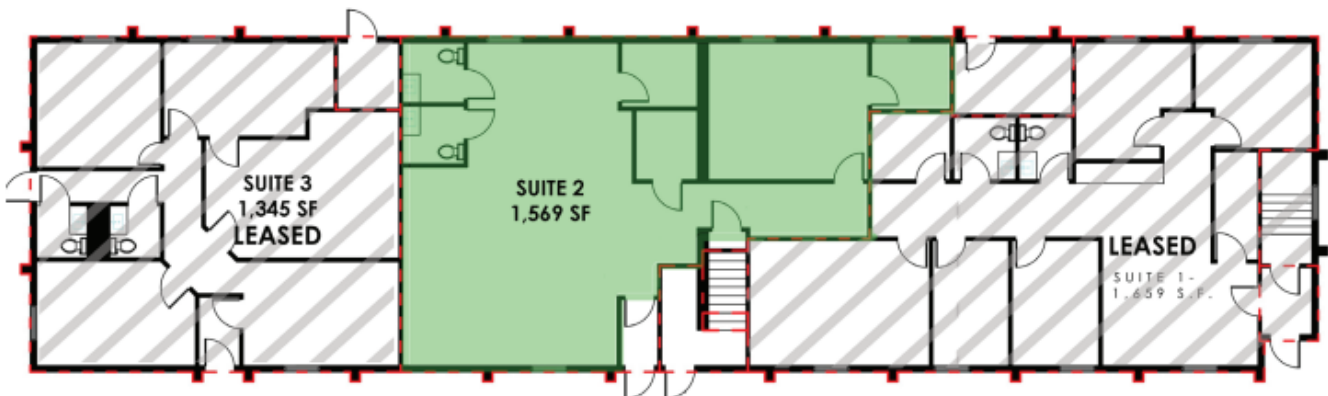
JBC Commercial
real estate

DL PROFESSIONAL BUILDING

115 Willow St W, Detroit Lakes, MN 56501



FLOOR PLAN: 2ND FLOOR



FLOOR PLAN: 1ST FLOOR

Landlord is committed to the following updates to the building:

1. New LED Marquee sign out front
2. New Exterior LED lighting around the entire building (Improves Tenant and employees safety at night)
3. New LED office lighting, much more enjoyable/natural light (Dimmer switches available if needed)
4. New Carpet Tiles thru-out second floor



BRENT KUEHNE

701.219.1059
brent.kuehne@jbccommercial.com



JIM BUUS

701.306.7093
jim.buus@jbccommercial.com