

4650 Whitesburg Drive - HUNTSVILLE, AL

OFFICE SPACE FOR LEASE



PROPERTY HIGHLIGHTS

- Suite 103 is an open space with lots of windows and kitchen area.
- Building is easily accessed via a lighted intersection on Whitesburg Drive and Teakwood Drive SW.
- Located in close proximity to Crestwood Medical Center.
- Site offers abundant parking and excellent street visibility from highly trafficked Whitesburg Drive.
- Monument signage available.

AVAILABLE SUITES

Suite 103 925 SF

ABOUT THE PROPERTY

4650 Whitesburg is home to Synovus Bank and currently has two spaces available. Located on Whitesburg Drive, just north of Airport Road, the property is situated in close proximity to abundant shopping and dining options.

LOCATION

4650 Whitesburg Drive
Huntsville, AL 35802
34.697280, -86.569001

PRICE

Call for pricing.

FOR MORE INFORMATION CALL

Walker Purvis
256-384-7606
walker@crunkletonassociates.com

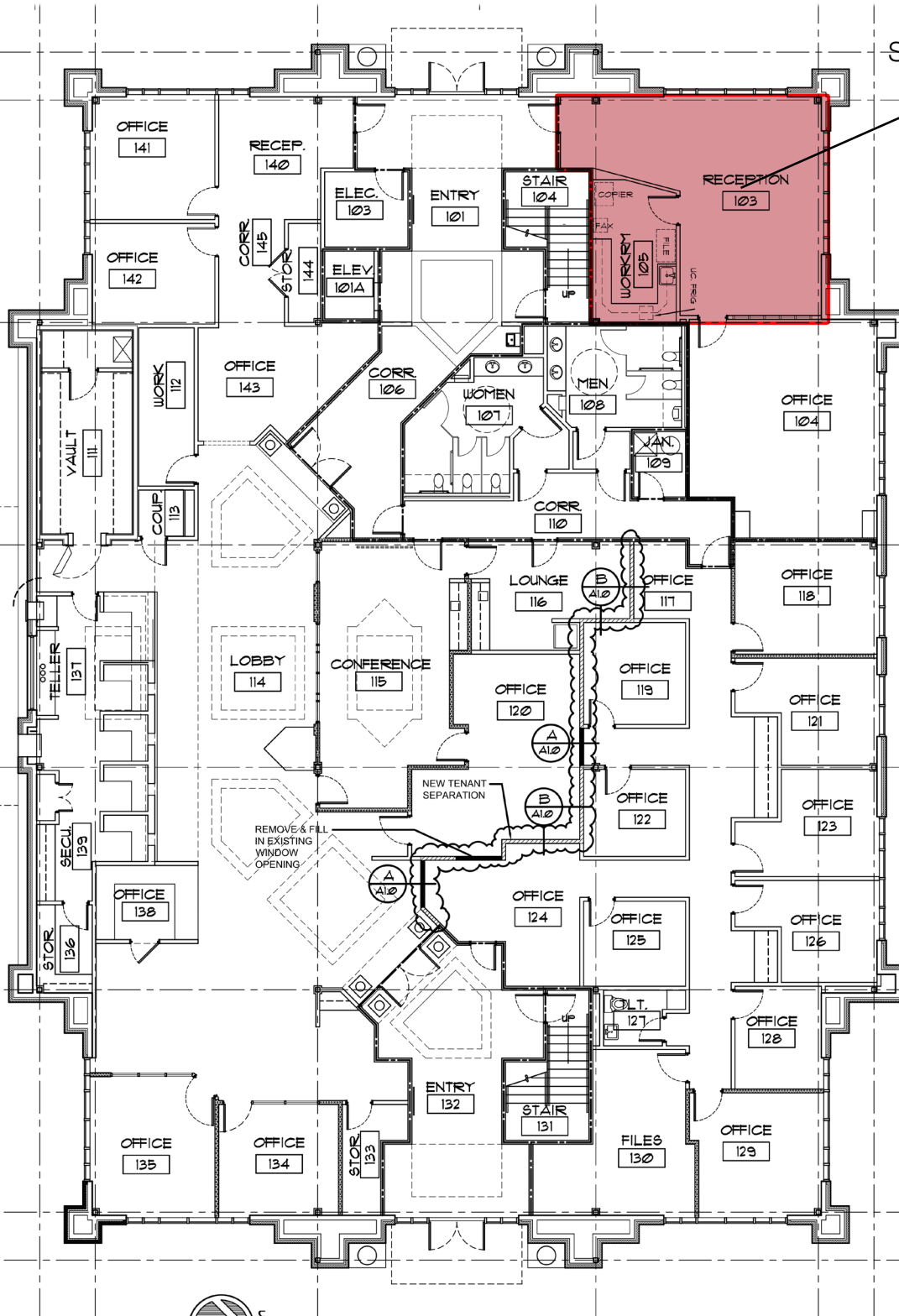


CRUNKLETON
COMMERCIAL REAL ESTATE GROUP

PROPERTY LOCATION



SUITE 103
925 SF



FIRST FLOOR PLAN

SCALE: 1/8" = 1'-0"