



392 E Winchester St

392 E Winchester St, Murray, UT 84107



Ryan Dastrup

NRE LLC

9069 S 1300 W, West Jordan, UT 84088

ryandastrup@gmail.com

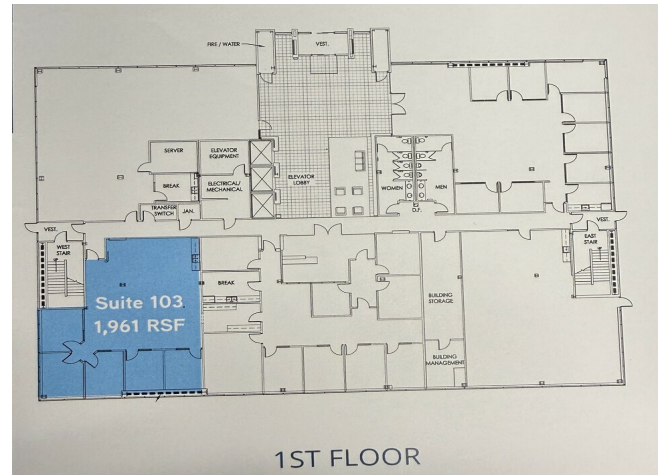
(801) 580-2736



392 E Winchester St

\$20.50 RSF | 1961 Total sf available

Main floor office space in a 5-story mid-rise office building. Impressive three-story atrium lobby. Unit 103 features 4 built-out offices, one kitchen/break room, and a big bull pin area. Porter service, keycard access, great security, ample parking, very well-maintained building, lots of natural light, and immediate freeway access to I-215. Several on-site restaurants and walking distance to Fashion Place Mall. This is a sub-lease space....



Rental Rate:	\$20.50 RSF
Property Type:	Office
Building Class:	B
Rentable Building Area:	81,017 SF
Year Built:	1993
Walk Score ®:	53 (Somewhat Walkable)
Transit Score ®:	35 (Some Transit)
Rental Rate Mo:	\$1.83 /SF/MO

1st Floor Ste 103

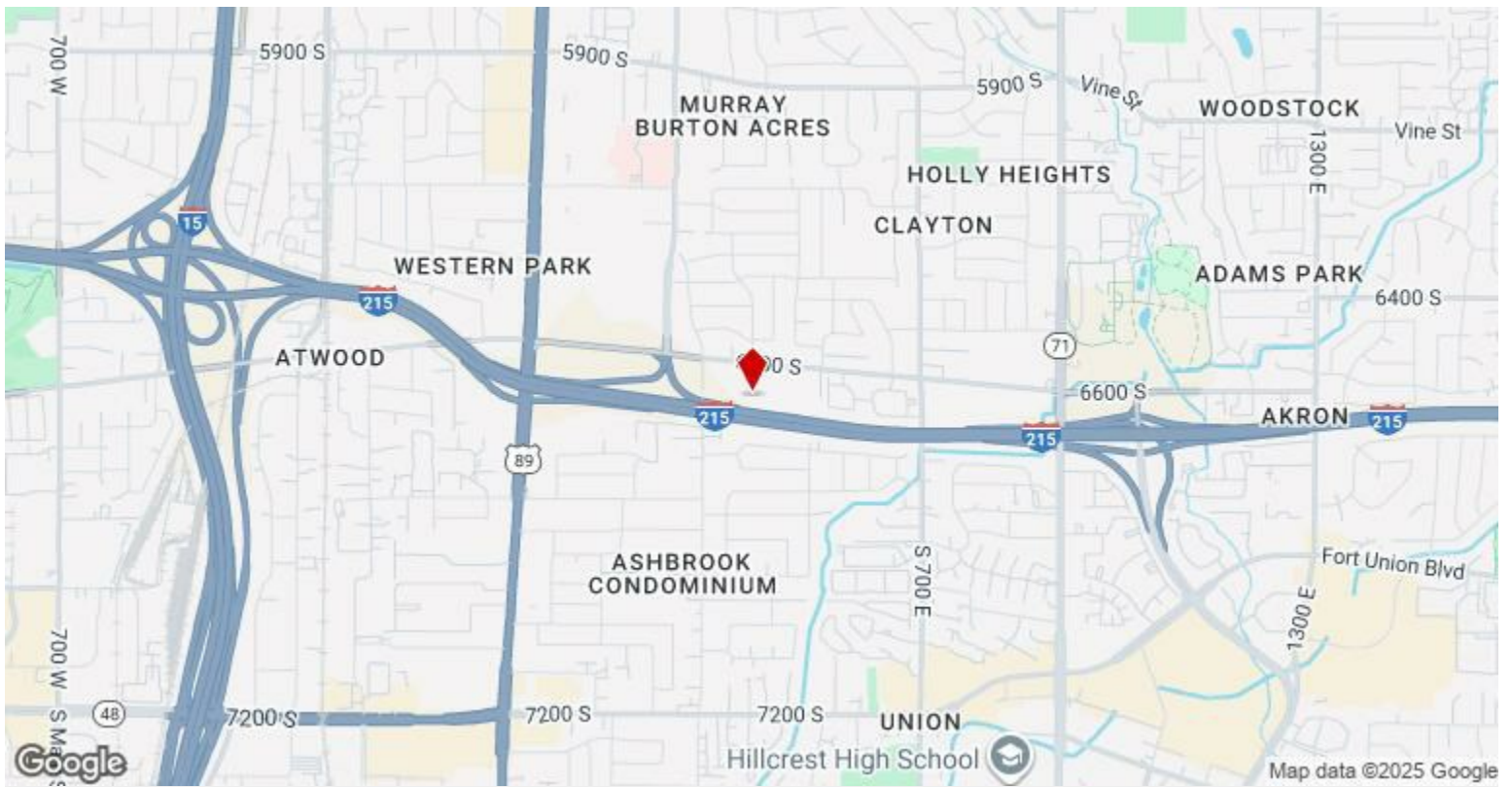
1

Space Available	1,961 SF
Rental Rate	\$20.50 RSF
Date Available	November 01, 2025
Service Type	Full Service
Space Type	Sublet
Space Use	Office

Main floor office space in a 5-story mid-rise office building. Impressive three-story atrium lobby. Unit 103 features 4 built-out offices, one kitchen/break room, and a big bull pin area. Porter service, keycard access, great security, ample parking, very well-maintained building, lots of natural light, and immediate freeway access to I-215. Several on-site restaurants and walking distance to Fashion Place Mall. This is a sub-lease space.

Major Tenant Information

Tenant	SF Occupied	Lease Expired
D3E, Inc.	-	April 2026
David Weekley Homes - Salt Lake City	-	
Enaex USA	-	
FatPipe Networks	-	June 2028
First American	-	
First Medical Advisory	-	
Healthlift	-	
J-U-B Engineers	-	
North American Services, Inc.	-	April 2025
US Health Advisors	-	



392 E Winchester St, Murray, UT 84107

Main floor office space in a 5-story mid-rise office building. Impressive three-story atrium lobby. Unit 103 features 4 built-out offices, one kitchen/break room, and a big bull pin area. Porter service, keycard access, great security, ample parking, very well-maintained building, lots of natural light, and immediate freeway access to I-215. Several on-site restaurants and walking distance to Fashion Place Mall. This is a sub-lease space.

Property Photos



Property Photos



632562b8-40f8-4384-80fe-0c7941093736



265859f7-38c2-45e5-a568-35808d009549 (1)

Property Photos



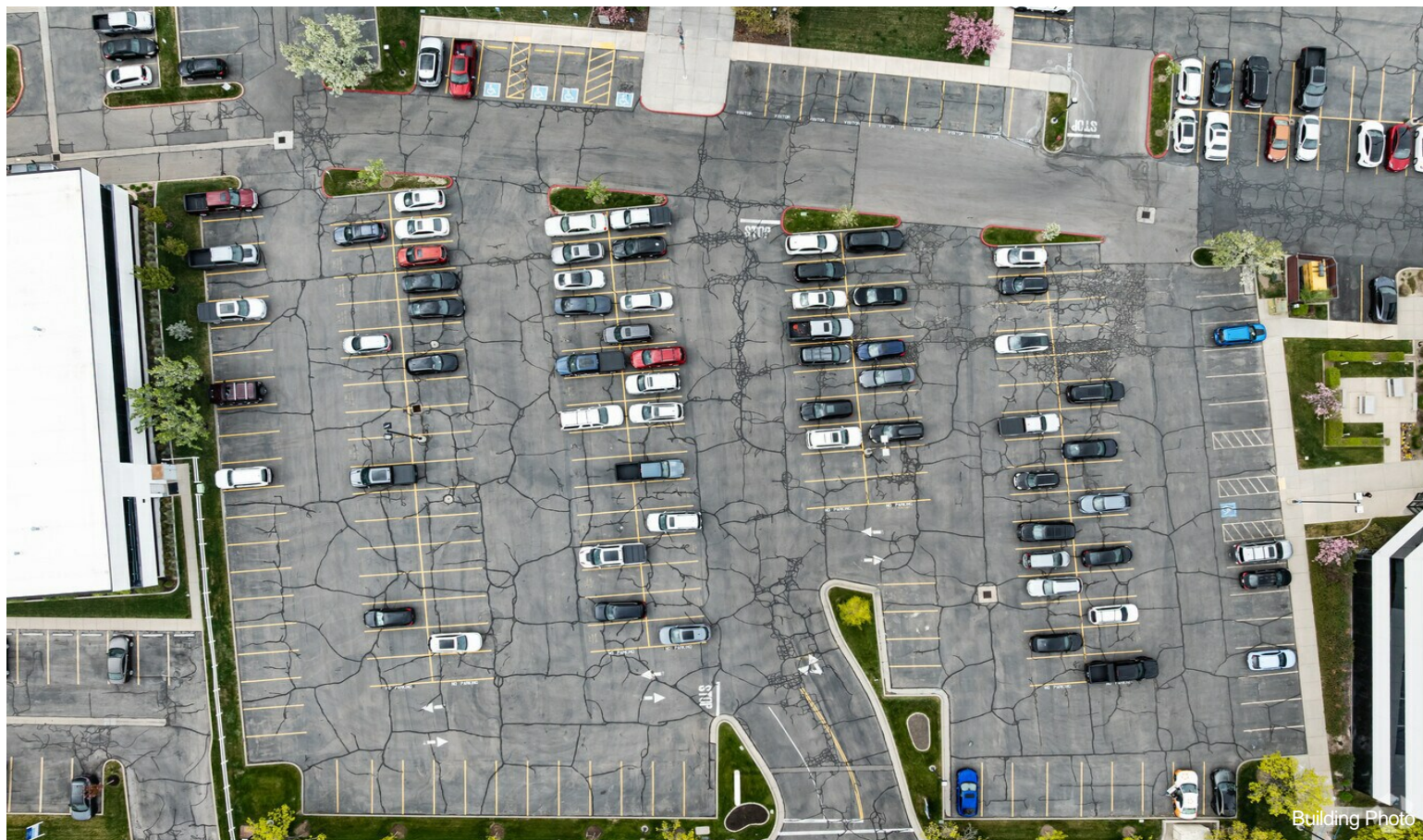
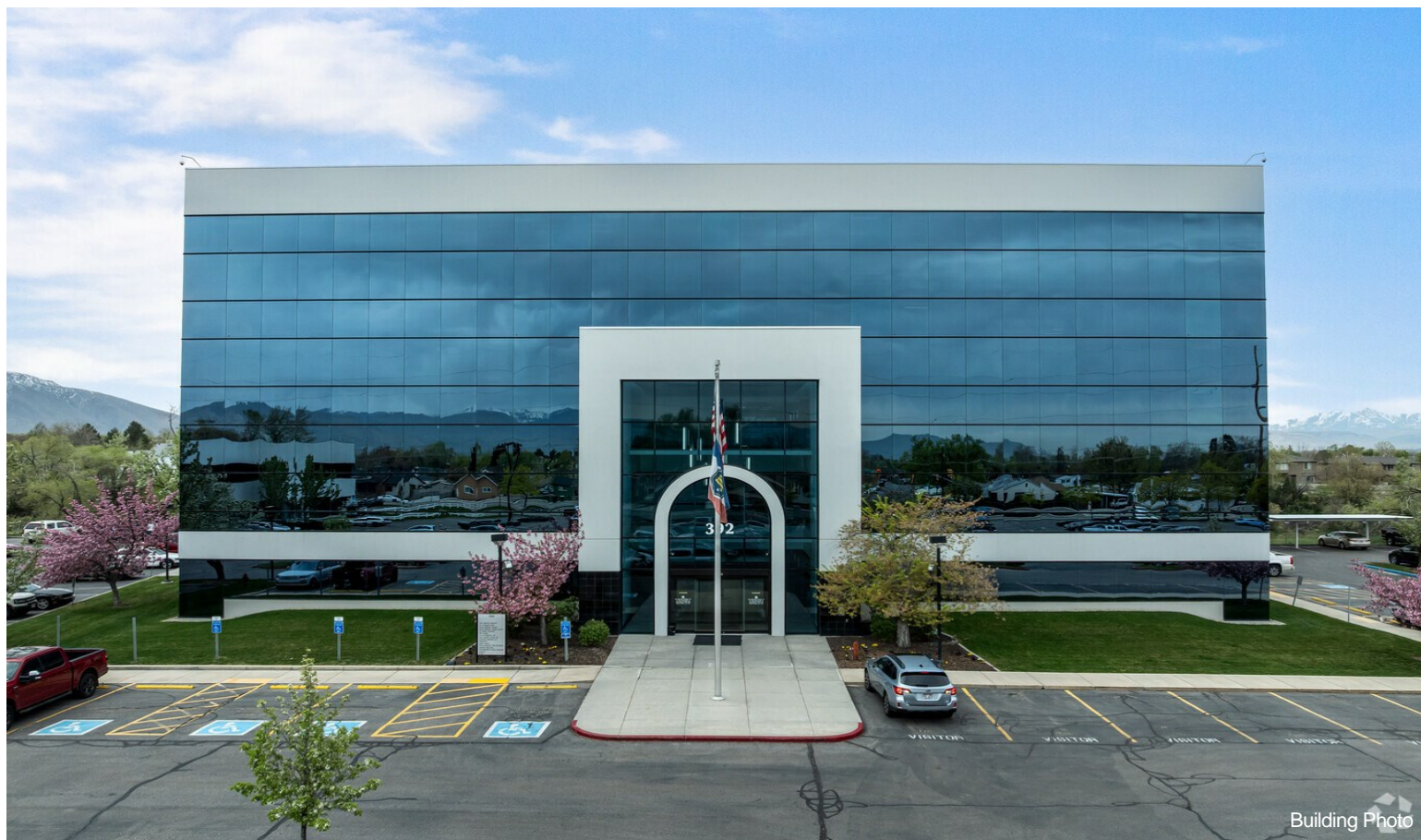
Property Photos



Property Photos



Property Photos



Property Photos

