

Jose Park - State Road A1A & Intracoastal Waterway



Asking Price:

\$4.4
Million

FOR SALE | 18.5 ACRES AVAILABLE | PALM COAST, FL

Palm Coast Waterfront Development Site

**VIEW ONLINE
VIDEO TOUR** 

- Future land use designated residential high-intensity and mixed-use high-intensity
- Planned for 158 residential units, 23,000 commercial square feet, marina with 86 dry slips, 46 wet slips including boat ramps and fueling stations
- Excellent opportunity to provide private or public marina services to the Palm Coast market and serve as an additional destination for tourist services
- 3 minutes to Florida's premier oceanfront destination - Hammock Beach Resort
- Walking distance to 16th Road beach access
- Adjacent to county's Mala Compra Greenway trail system
- 1,100± feet of navigable frontage along the Intracoastal Waterway
- Direct frontage on State Road A1A

CHUCK DIEBEL

Executive Vice President
+1 904 861 1112
chuck.diebel@colliers.com

DOUGLAS BLAIR

Managing Director
+1 904 861 1101
douglas.blair@colliers.com

**Incredible
Mixed-Use
Development
Opportunity!**

Colliers International
Northeast Florida
76 S. Laura Street | Suite 1500
Jacksonville, FL 32202
P: +1 904 358 1206
www.colliers.com/jacksonville



Accelerating success.

Executive Summary

The property land use is designated mixed use and is planned to include up to 158 residential units, 23,000 square feet of commercial; and a marina with 46 wet slips, 86 dry slips, boat ramp, and fueling facilities. Uniquely situated between the Intracoastal Waterway and State Road A1A, it is less than 3/4 mile from beach access. The property has 1,100 feet of navigable water frontage and 900 feet of SR A1A frontage, and is within 1/4 mile of a Publix shopping center. Protected Flagler County lands, the Mala Compra Greenway, are situated on the other side of SR A1A, with hiking and bicycle trails. Site is located within "Preferred boating facility siting area" of Flagler County.

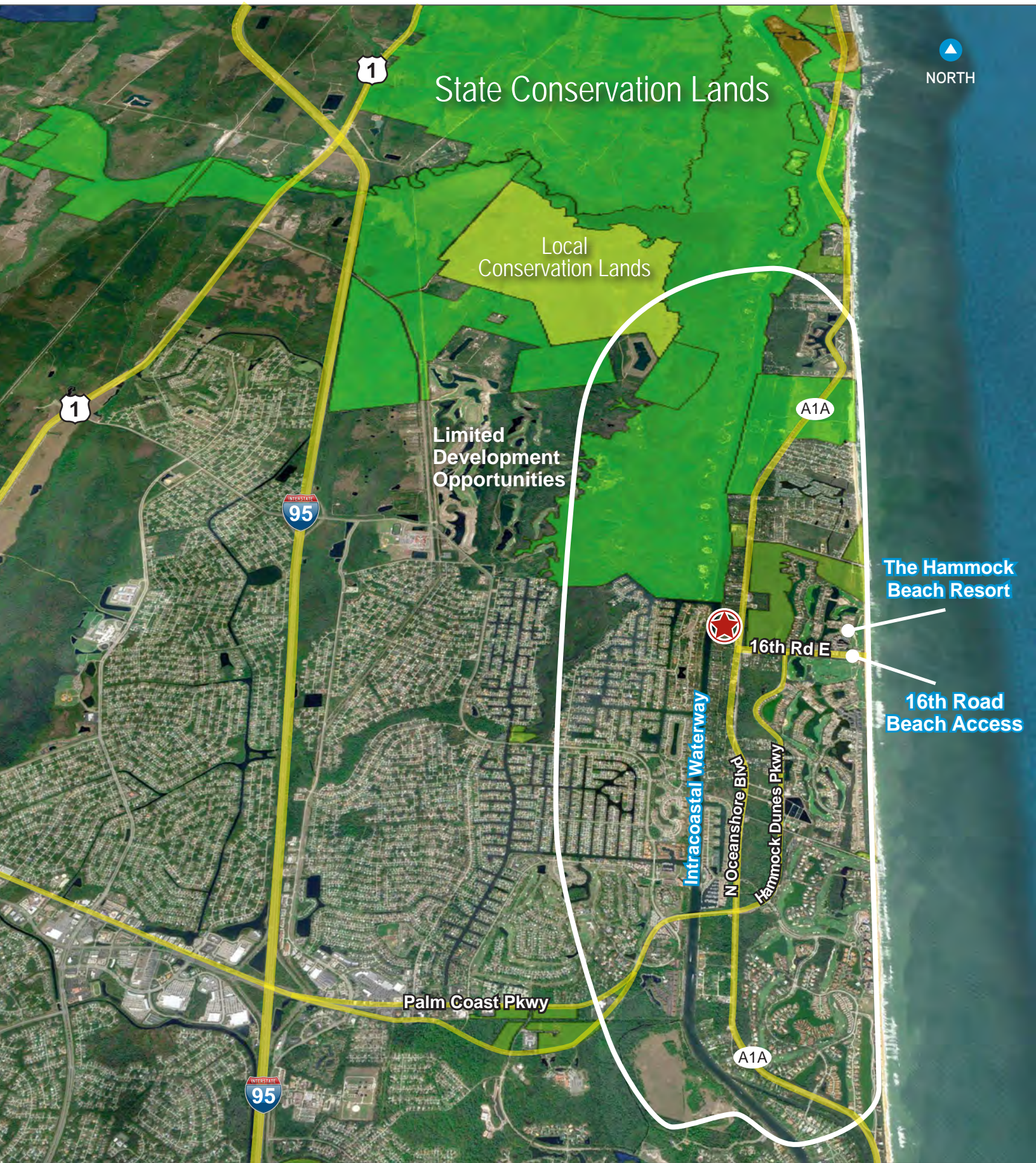




Site Development Concept





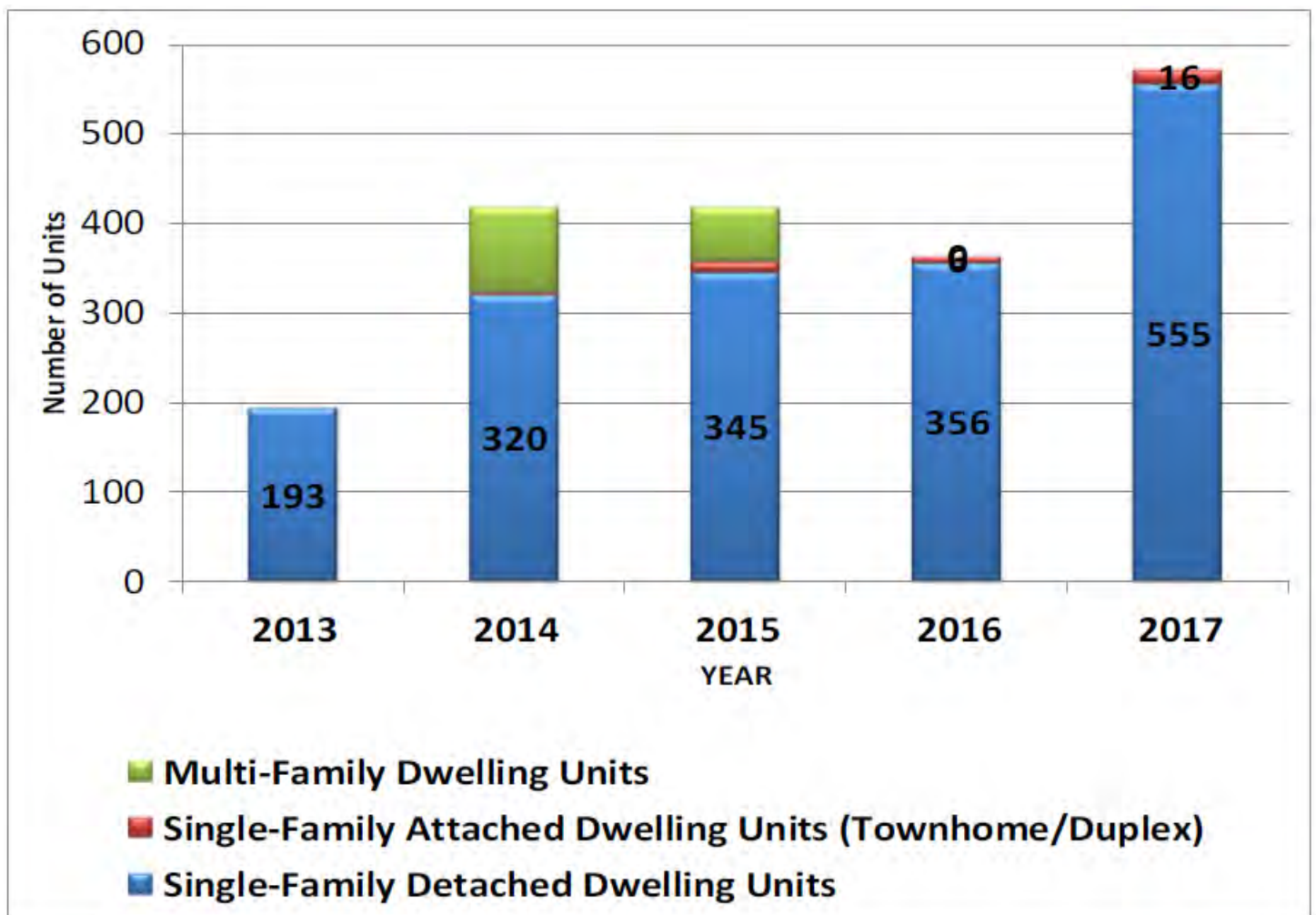


Residential Development

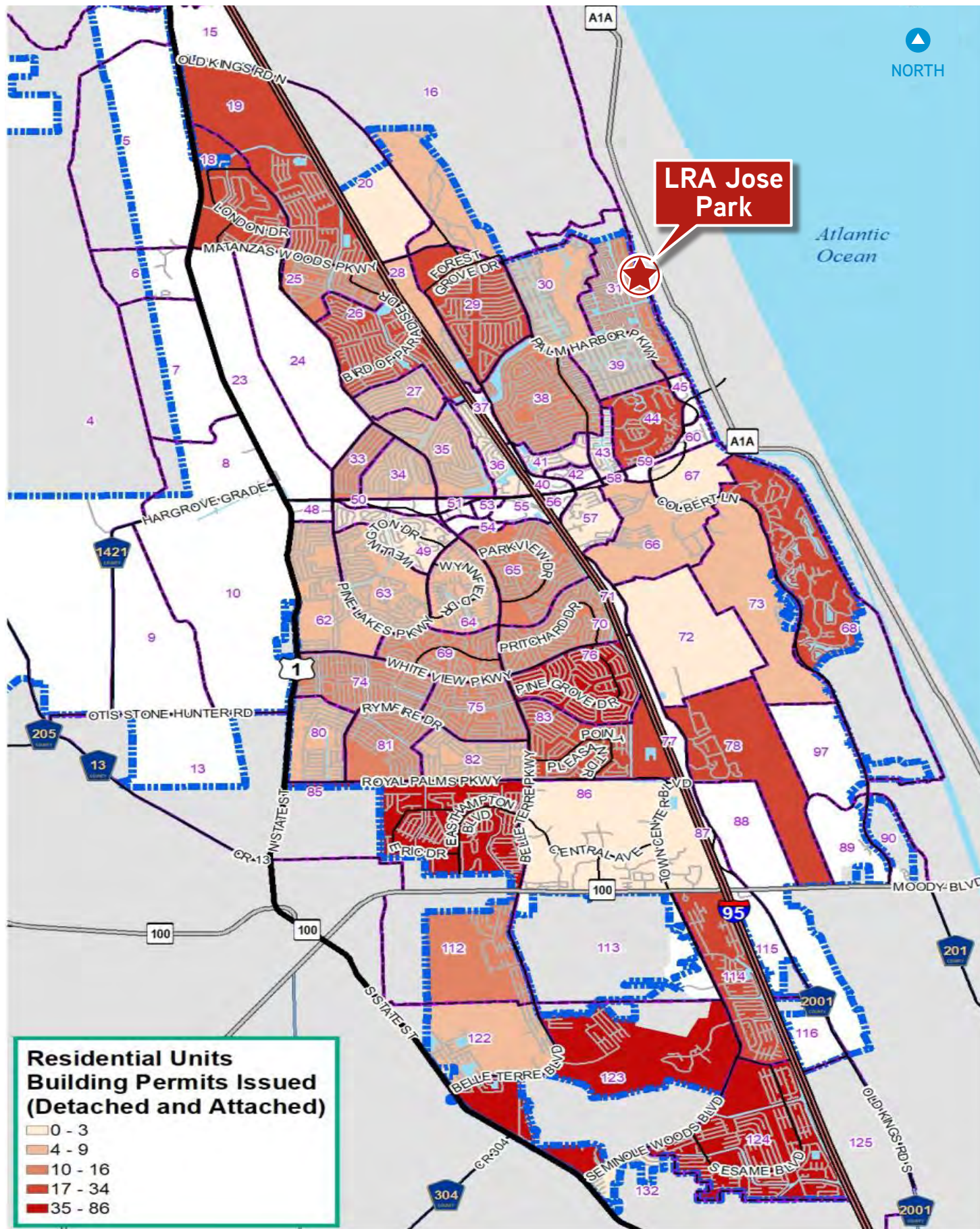
Residential Construction Completed Table (2013-2017)

	2013	2014	2015	2016	2017
Single-Family Detached Dwelling Units	193	320	345	356	555
Single-Family Attached Dwelling Units (Townhome/Duplex)	0	2	12	6	16
Multi-Family Dwelling Units	0	96	61	0	0
Total Dwelling Units	193	418	418	362	571

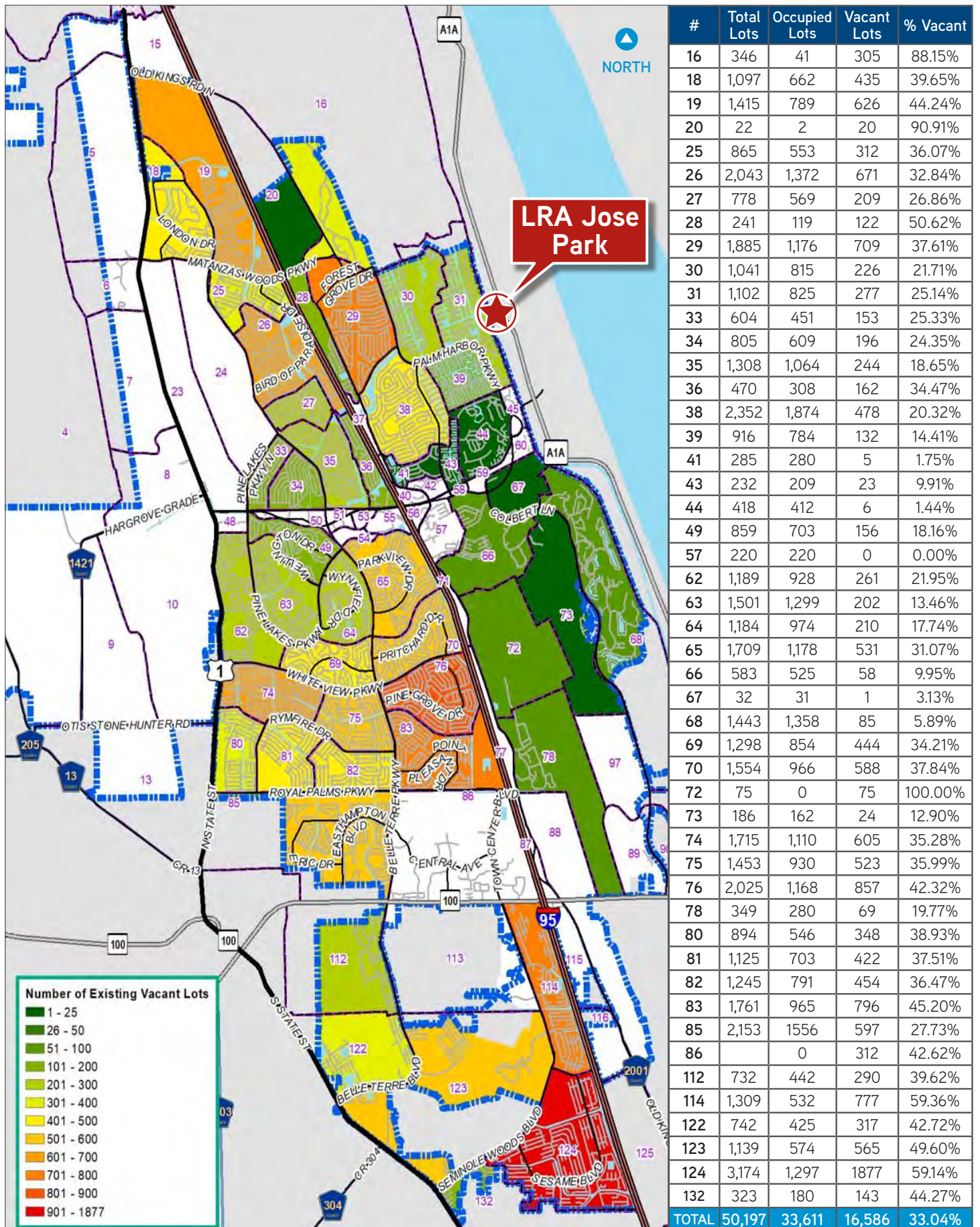
Residential Construction Completed Chart (2013-2017)



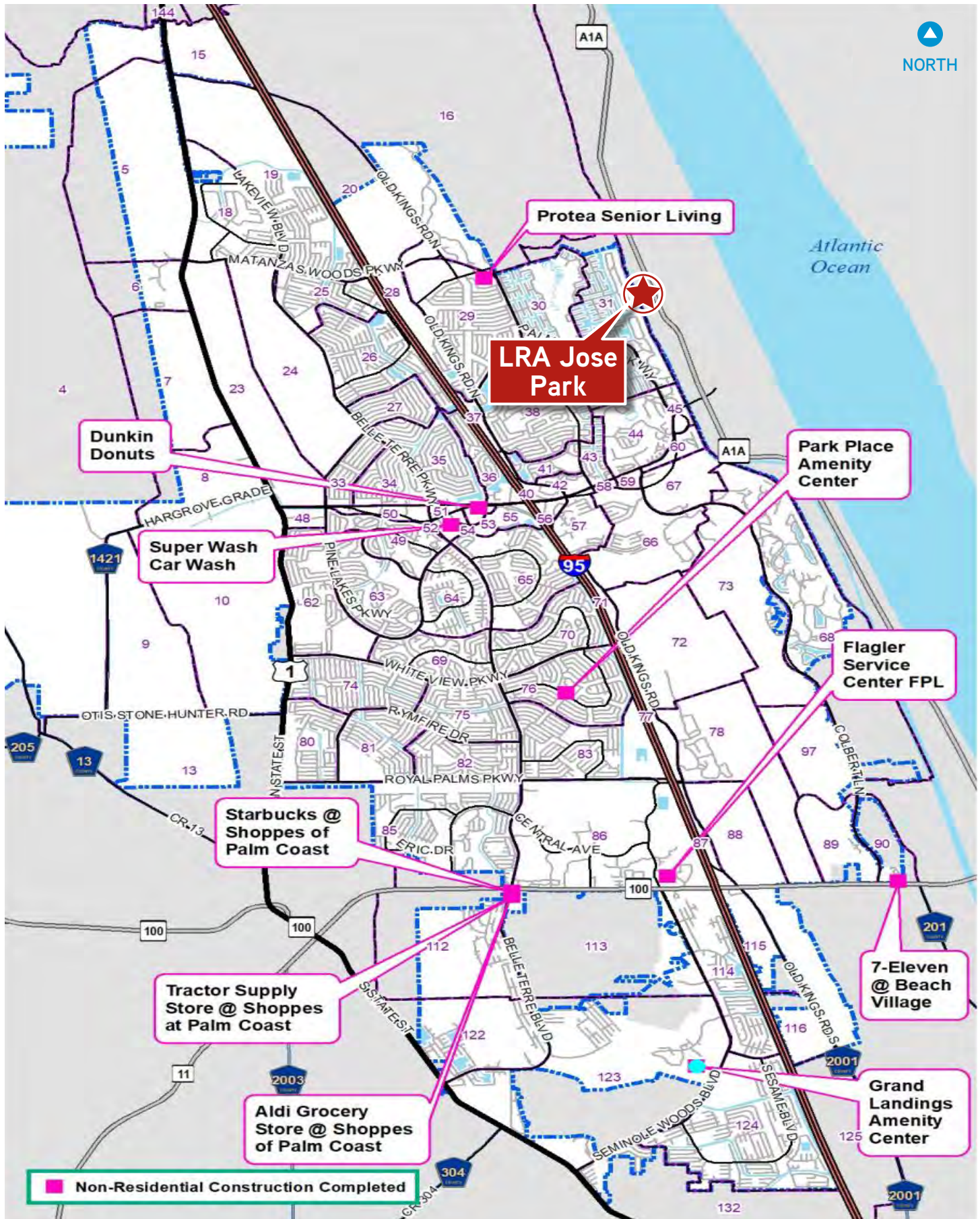
Residential Building Permits Issued Map (2017)



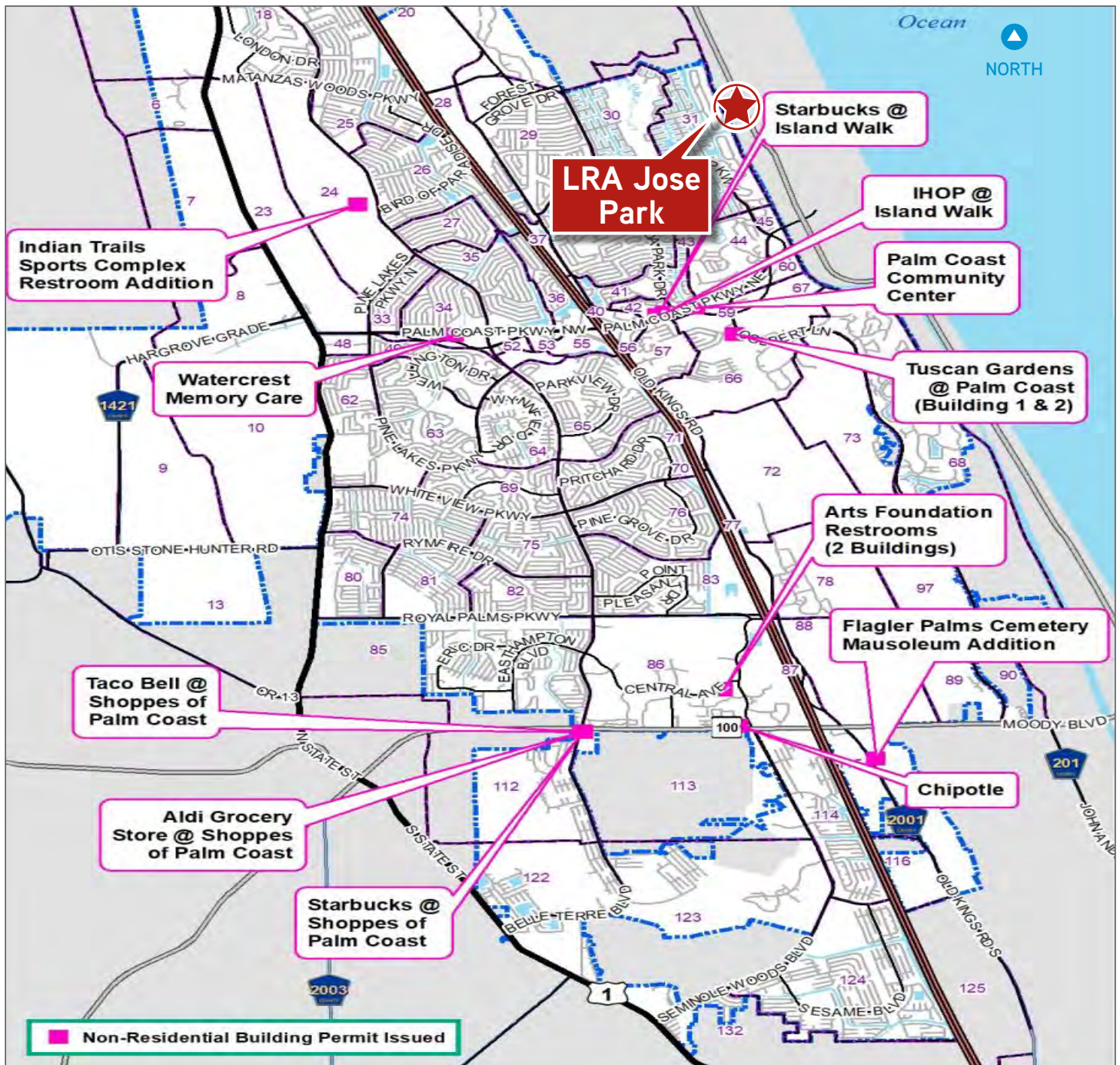
Existing Vacant Residential Lots



Non-Residential Construction Completed



Non-Residential Building Permits Issued Map



	TAZ	Sq. Ft.	Description
Aldi Grocery Store @ Shoppes of Palm Coast	86	17,849	Retail Building
Starbucks @ Island Walk	42	2,064	Food/Drinking Establishment
Starbucks @ Shoppes of Palm Coast	86	2,200	Food/Drinking Establishment
Tuscan Gardens @ Palm Coast (Building 1 & 2)	66	135,883	Assisted Living Facility
Taco Bell @ Shoppes of Palm Coast	86	1,961	Food/Drinking Establishment
IHOP @ Island Walk	42	4,641	Food/Drinking Establishment
Flagler Palms Cemetery Mausoleum Addition	115	1,697	Cemetery
Watercrest Memory Care	50	45,952	Memory care/64 units
Palm Coast Community Center	58	18,330	Community Center
Chipotle	86	5,896	Food/Drinking Establishment
Arts Foundation Restrooms (2 Buildings)	86	3,104	Restroom Facilities
Indian Trails Sports Complex Restroom Addition	24	1,472	Restroom Facilities
Summary of Non-Residential Building Permits Issued in 2017		241,049 Sq. Ft. of non-residential	

Community Profile

Businesses and Jobs

Flagler County has a total of 3,282 businesses. In 2017, the leading industries in Flagler County were Health Care and Social Services, Retail Accomodation and Food Services, and Education.



How many employees do businesses in Flagler County have?

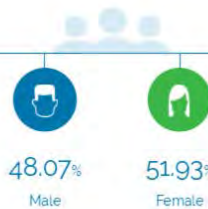


1-4 Employees	67.18%
5-9 Employees	17.85%
10-19 Employees	7.46%
20-49 Employees	4.88%
50-99 Employees	1.31%
100+ Employees	1.31%

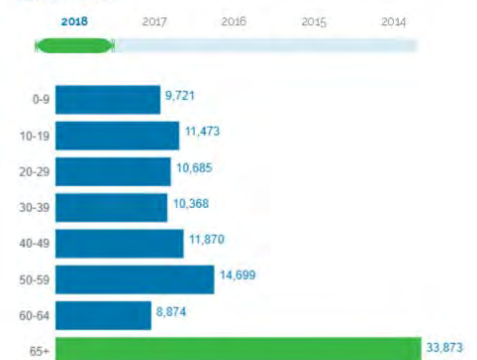
People

The total population of Flagler County is 111,563. The median age is 50.22.

111,563
Total Population



Age Distribution



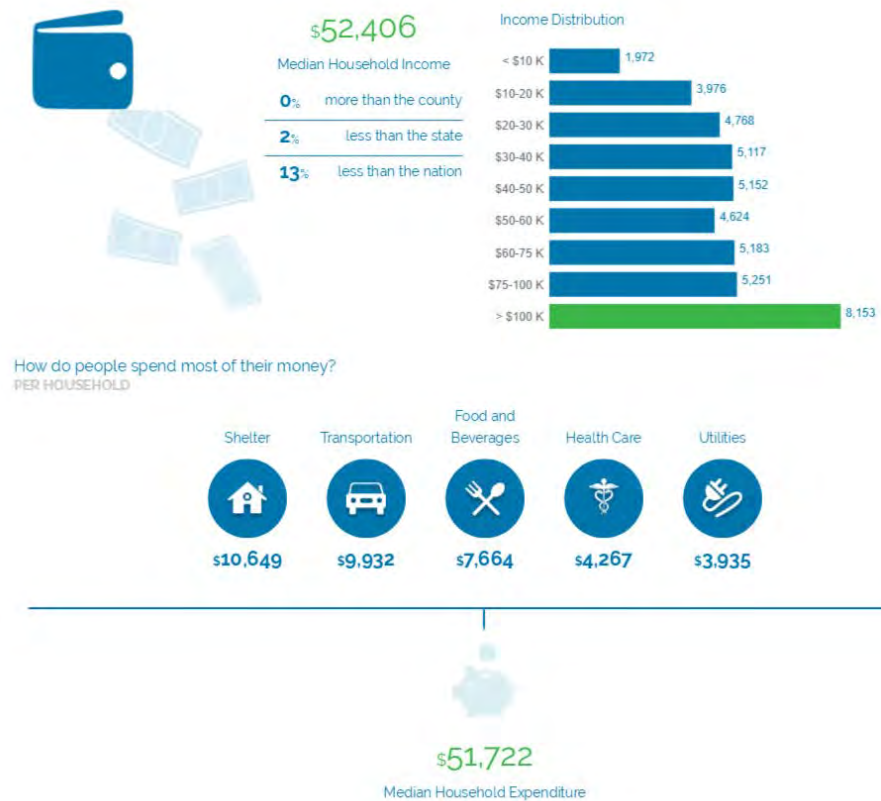
Median Age

50

Community Profile

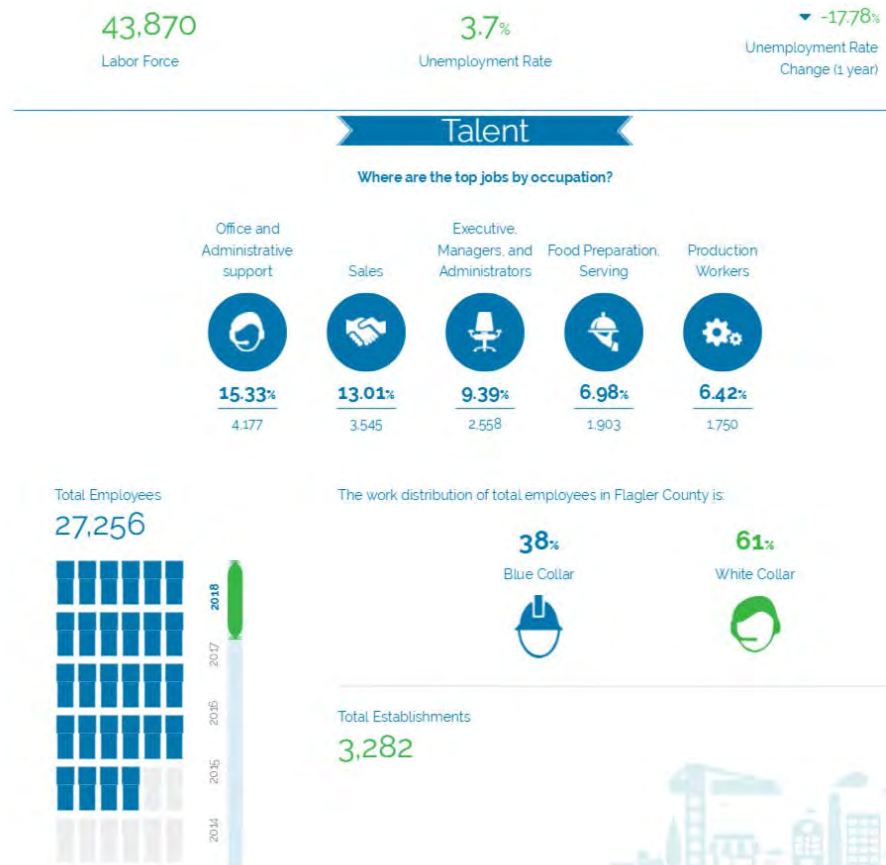
Income and Spending

Households in Flagler County earn a median yearly income of \$52,406. 30.33% of the households earn more than the national average each year. Household expenditures average \$51,722 per year. The majority of earnings get spent on Shelter, Transportation, Food and Beverages, Health Care and Utilities.



Labor Force

Flagler County has a labor force of 43,870 people, with an unemployment rate of 3.7%



Community Profile

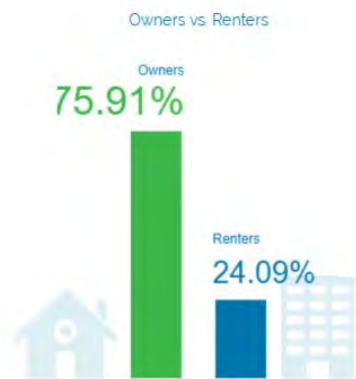
Educational Attainment

The majority of the population in Flagler County has a high school degree, and 33.04% have a college degree.



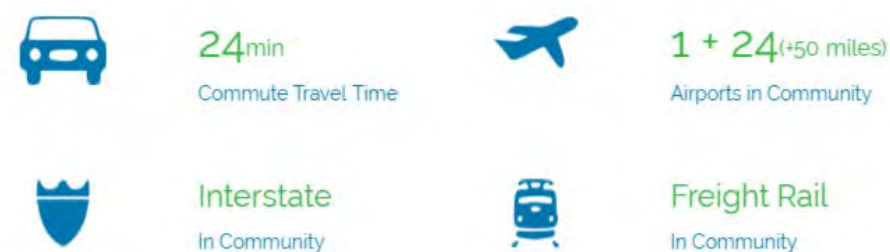
Housing

There are 215% more households who own their homes than there are renters.



Transportation

Residents spend an average of 24 minutes commuting to work. Flagler County is served by 24 airports within 50 miles. Rail can be accessed within the community. Interstates can be accessed within the community.



Taxes





Contact us:

CHUCK DIEBEL

Executive Vice President

+1 904 861 1112

chuck.diebel@colliers.com

DOUGLAS BLAIR

Managing Director

+1 904 861 1101

douglas.blair@colliers.com

colliers.com/jacksonville

This document has been prepared by Colliers International for advertising and general information only. Colliers International makes no guarantees, representations or warranties of any kind, expressed or implied, regarding the information including, but not limited to, warranties of content, accuracy and reliability. Any interested party should undertake their own inquiries as to the accuracy of the information. Colliers International excludes unequivocally all inferred or implied terms, conditions and warranties arising out of this document and excludes all liability for loss and damages arising there from. This publication is the copyrighted property of Colliers International and/or its licensor(s). ©2013-2018. All rights reserved.



Accelerating success.