



OFFICE AVAILABLE TO LET, £52.50 psf (Quoting), 1,751 to 11,886 sq ft

Marlow House

1A Lloyds Avenue, London, UK EC3N 3AA

Newly refurbished office space within an art deco building in the heart of the insurance district

Marlow House is an attractive art deco building that provides high quality modern office accommodation.

Contemporary Manned Reception

2 x Automatic Passenger Lifts

Cycle Pod Storage and Shower Facilities in the basement

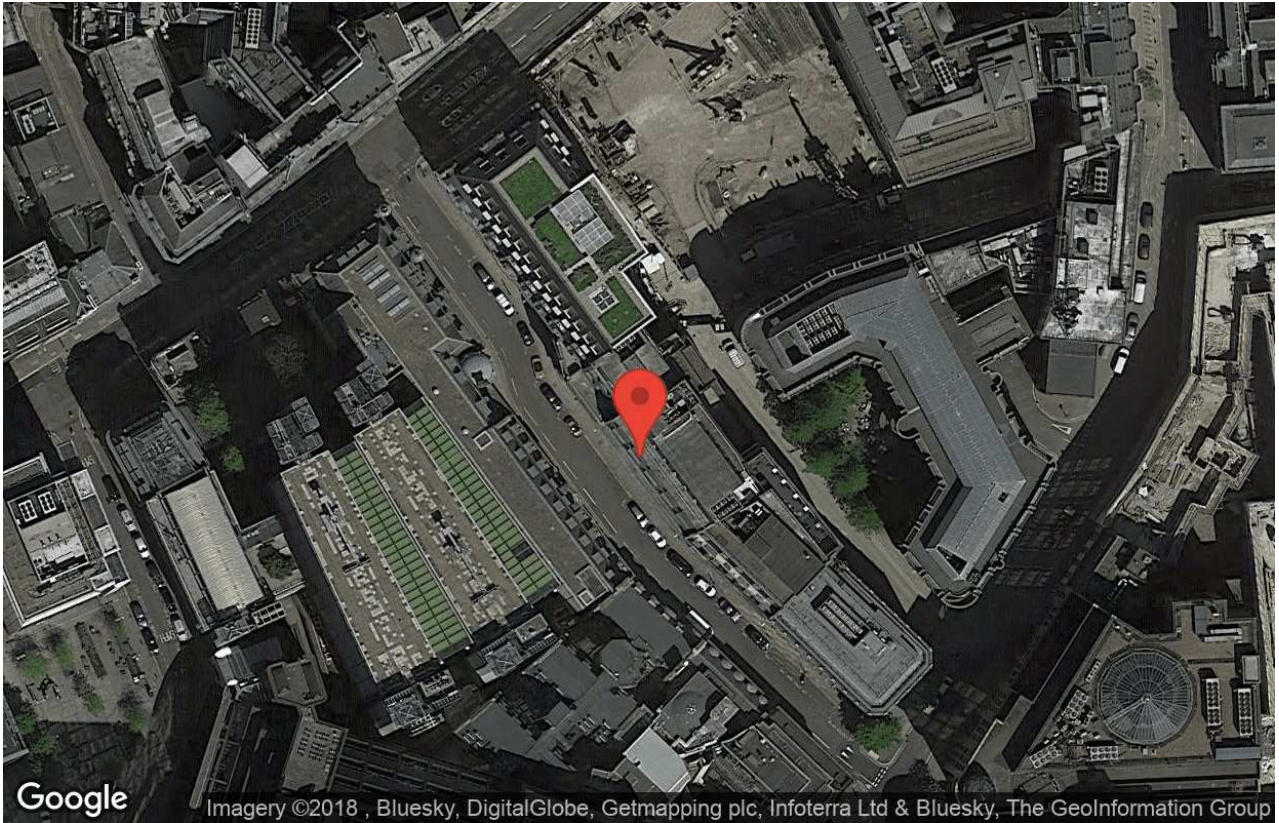
VRF Fan Coil Air Conditioning

LED Lighting

Raised Access Metal Tiled Floors



Marlow House, 1A Lloyds Avenue, London, UK EC3N 3AA



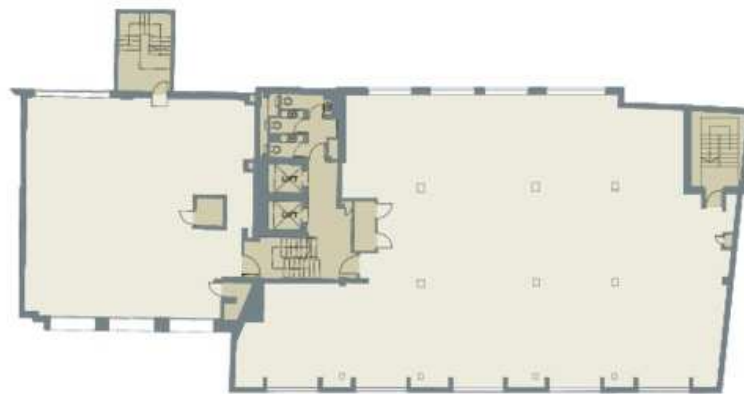
Data provided by Google

Units & availability

Unit	Floor	Size sq ft	Rent psf	Service charge psf	Rates psf	Total pa	Status
5th Floor (south)	5	3,187 NIA	£52.50	£11.35	£20.64	£269,269.63	Available
3rd Floor (south)	3	3,425 NIA	£52.50	£11.35	£20.11	£287,563.00	Available
3rd Floor (north)		1,751 NIA		£1,751.00		£3,193,141.11	
2nd Floor (north)	2	1,760 NIA	£52.50	£11.35	£16.75	£141,856.00	Available
1st Floor (north)	1	1,763	£52.50	£11.35	£19.23	£146,470.04	Available

* All sizes NIA

Fifth floor



LLOYD'S AVENUE

Essentials

Rent	£52.50 psf (Quoting)
Sizes	1,751 to 11,886 sq ft
VAT charges	The building is VAT elected
Lease details	New flexible leases available direct from the freeholder
EPC category	B

Marketed by: Matthews & Goodman (London (City))

For more information please visit:

<http://example.org/m/30495-marlow-house-1a-lloyds-avenue>

Location overview

In the heart of the City's insurance district, Marlow House lies within the historic Lloyds Avenue Conservation Area and is close proximity to Lloyd's of London

Transport

The building is well connected to both National Rail and the underground network

National rail

Fenchurch Street, Liverpool Street and Cannon Street are in close proximity

Tube

Bank, Monument, Tower Hill and Aldgate underground stations, and the DLR are within easy reach

VAT

The building is VAT elected

Lease summary

New flexible leases available direct from the freeholder

EPC

Please visit <http://example.org/m/30495-marlow-house-1a-lloyds-avenue> for the EPC certificate.



21 ironmonger lane, London EC2V 8EY

☎ 020 7367 5533

✉ emoore@matthews-goodman.co.uk



Ed Moore

☎ 020 7367 5393

☎ 07957 121 681

✉ emoore@matthews-goodman.com



Oli Bowcott

☎ 020 7747 3117

☎ 07885 251575

✉ obowcott@matthews-goodman.co.uk



Oliver Bates

☎ 020 7367 5392

☎ 07802 674 438

✉ obates@matthews-goodman.co.uk

Matthews & Goodman as agent for the Vendors/Lessors of this property give notice that 1) These particulars have been checked and are understood to be materially correct at the date of publication. The content however, is given without responsibility and should not, in any circumstances, be relied upon as representations of fact. Intending purchasers/lessees should satisfy themselves as to their correctness and as to the availability to the property, prior to arranging viewings of the property. 2) These particulars are a guide only and do not form part of an offer or contract. 3) Matthews & Goodman, their employees, nor the Vendors/Lessors make or give any representation or warranty in relation to the property. 4) No representation or warranty is given in respect of any part, equipment or services at the property. 5) Unless otherwise stated, prices, rents or other prices quoted are exclusive of VAT. Intending purchaser/lessees must satisfy themselves independently as to the incidence of VAT in respect of any transaction relating to this property. 6) All floor areas have been measured and calculated in accordance with the RICS property measurement (incorporating IPMS) 1st Edition, May 2015, Office space has been measured to IPMS 3 - Office, unless otherwise stated. 7) Date of Publication: November 2017