

JEFFERSON COMMERCE CENTER OFFICE SPACES AVAILABLE FOR LEASE

27710 Jefferson Avenue | Temecula, CA

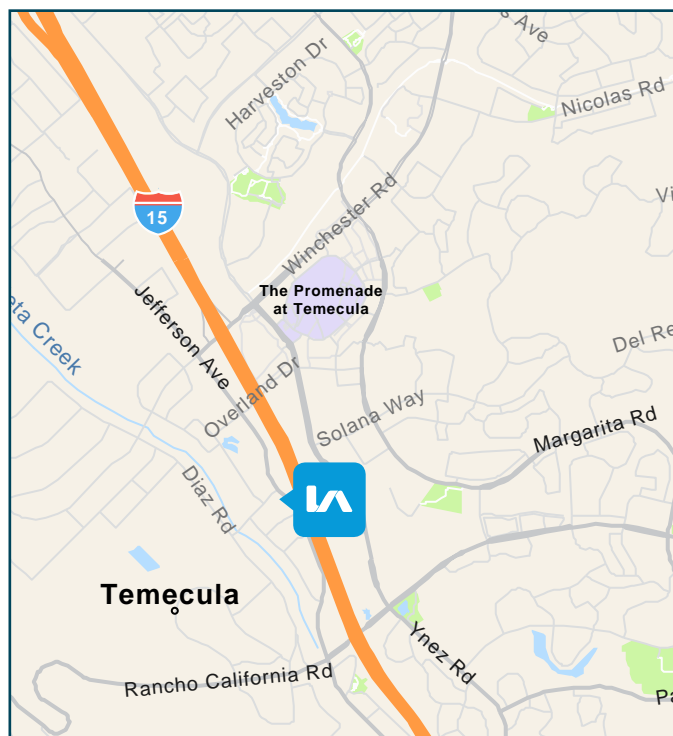


FEATURES:

- Ideal location off I-15 freeway between Rancho California Rd. & Winchester Rd.
- Close proximity to Overland Drive and I-15 freeway overpass
- Excellent visibility along Jefferson Avenue and from I-15 freeway
- Within walking distance to restaurants, fast food services, hotels and many other services
- Abundant parking in front, rear and side of building
- Elevator served & Verizon FIOS at building

LEASE RATE STARTING AT: \$1.65 PER RSF MG

(M.G. - Modified Gross excludes electricity & janitorial to premises)



Sheri Shoemaker
951.445.4510
sshoeemaker@leetemecula.com
DRE #00846946

Mary Piper
951.445.4516
mpiper@leetemecula.com
DRE #01268829

No warranty or representation has been made to the accuracy of the foregoing information. Terms of sale or lease and availability are subject to change or withdrawal without notice. Lee & Associates Commercial Real Estate Services, Inc. - Riverside. 25240 Hancock Avenue, Suite 100 - Murrieta, CA 92562 Corporate ID# 01048055

JEFFERSON COMMERCE CENTER OFFICE SPACES AVAILABLE FOR LEASE

27710 Jefferson Avenue | Temecula, CA



AVAILABILITY

SUITE	RSF	LEASE RATE	AVAILABILITY	DESCRIPTION
205	±1,063	\$1.65	12/01/2019	Three private offices, open reception work area. Do not disturb Tenant.
207	±1,453	\$1.65	Immediately	Reception with open work area and four private offices

CONTACT AGENT FOR SHOWING INSTRUCTIONS.

Square footages based on rentable square feet (RSF). MG (Modified Gross) leases, do not include premises janitorial and electric.

Rev: 10/24/19



Sheri Shoemaker
951.445.4510
sshoemaker@leetemecula.com
DRE #00846946

Mary Piper
951.445.4516
mpiper@leetemecula.com
DRE #01268829

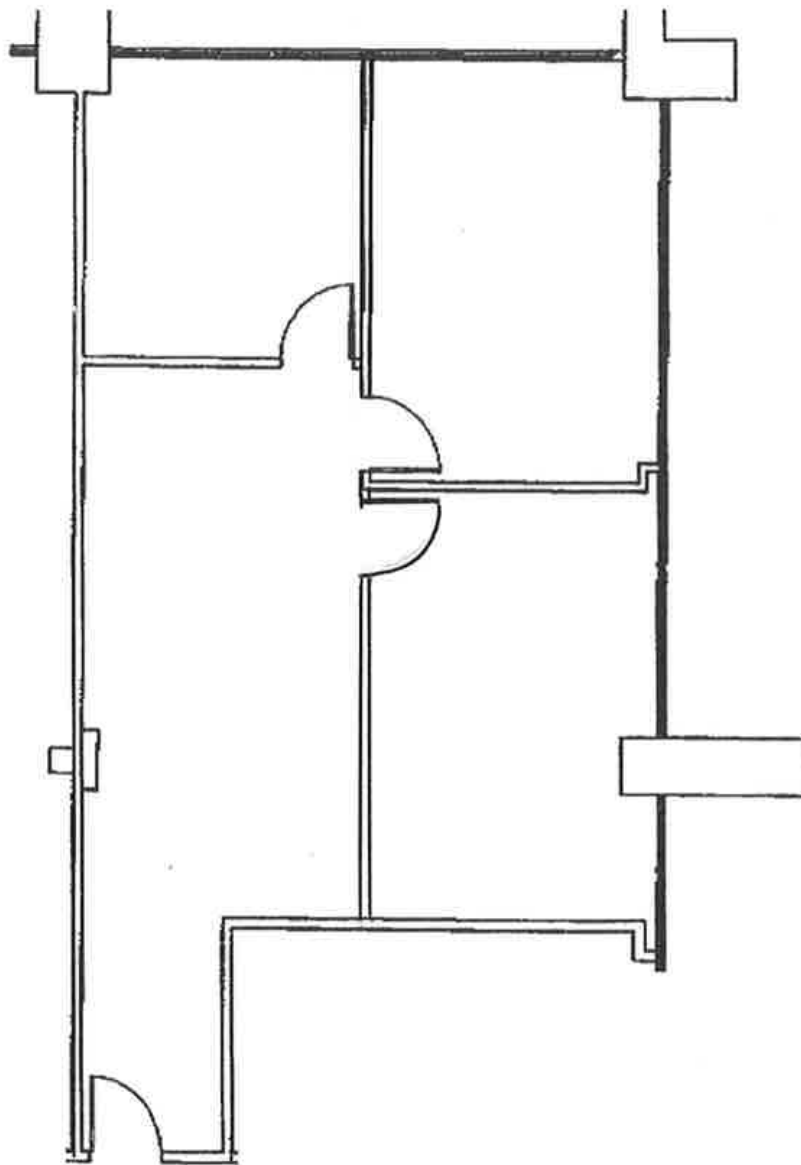
No warranty or representation has been made to the accuracy of the foregoing information. Terms of sale or lease and availability are subject to change or withdrawal without notice. Lee & Associates Commercial Real Estate Services, Inc. - Riverside. 25240 Hancock Avenue, Suite 100 - Murrieta, CA 92562 Corporate ID# 01048055

JEFFERSON COMMERCE CENTER OFFICE SPACES AVAILABLE FOR LEASE

27710 Jefferson Avenue | Temecula, CA



SUITE 205 ±1,063 SF



Sheri Shoemaker
951.445.4510
sshoemaker@leetemecula.com
DRE #00846946

Mary Piper
951.445.4516
mpiper@leetemecula.com
DRE #01268829

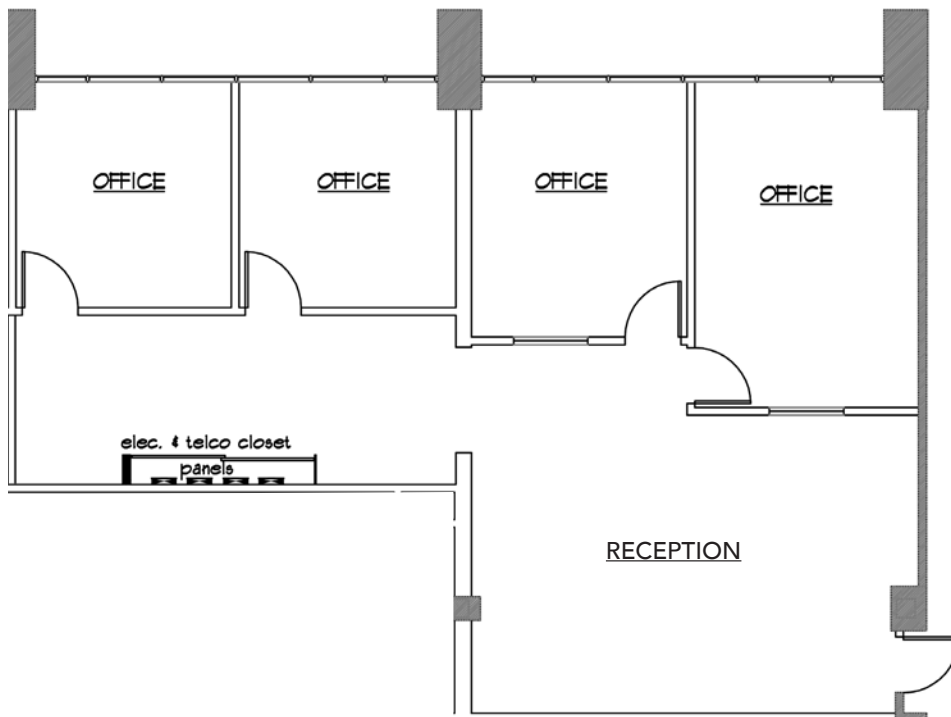
No warranty or representation has been made to the accuracy of the foregoing information. Terms of sale or lease and availability are subject to change or withdrawal without notice. Lee & Associates Commercial Real Estate Services, Inc. - Riverside. 25240 Hancock Avenue, Suite 100 - Murrieta, CA 92562 Corporate ID# 01048055

JEFFERSON COMMERCE CENTER OFFICE SPACES AVAILABLE FOR LEASE

27710 Jefferson Avenue | Temecula, CA



SUITE 207 **±1,453 SF**



Sheri Shoemaker
951.445.4510
sshoeemaker@leetemecula.com
DRE #00846946

Mary Piper
951.445.4516
mpiper@leetemecula.com
DRE #01268829

No warranty or representation has been made to the accuracy of the foregoing information. Terms of sale or lease and availability are subject to change or withdrawal without notice. Lee & Associates Commercial Real Estate Services, Inc. - Riverside. 25240 Hancock Avenue, Suite 100 - Murrieta, CA 92562 Corporate ID# 01048055