

FOR LEASE | INDUSTRIAL PROPERTY

10302 INTERSTATE 35 | BUILDING B

KHALEDI INDUSTRIAL PARK, LAREDO, TX 78045

FORUM 
COMMERCIAL REAL ESTATE



PROPERTY SPECIFICATIONS

Building Size:	109,200 SF
Available SF:	109,200 SF
Office Space:	3,191 SF
OHD 9'x11':	34 Doors
OHD 12'x15':	1 Door with Ramp
Trailer Parking:	81 Double Stack Trailer Parking
Car Parking:	78 Parking Spaces
Lot Size:	7.32 Acres
Zoning:	M-1

PROPERTY OVERVIEW

109,200 SF of warehouse space available for lease in Khaledi Industrial Park. Building under construction with completion date estimated for October 2019.

LOCATION OVERVIEW

Located in new Khaledi Industrial Park north of Loop 20 with direct access to Interstate 35 and 3.5 miles from World Trade Bridge.

CARLO MOLANO, SIOR

carlom@forumcre.com

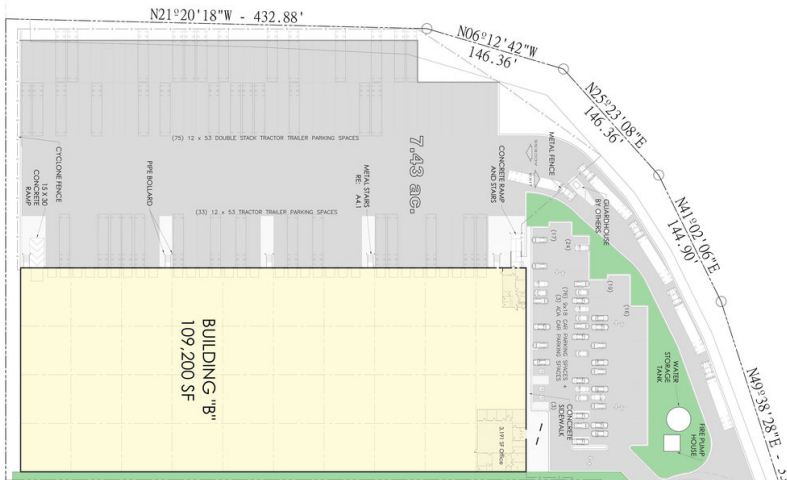
M: 956.523.9403

O: 956.717.9090

FOR LEASE | INDUSTRIAL PROPERTY

10302 INTERSTATE 35 | BUILDING B
KHALEDI INDUSTRIAL PARK, LAREDO, TX 78045

FORUM
COMMERCIAL REAL ESTATE



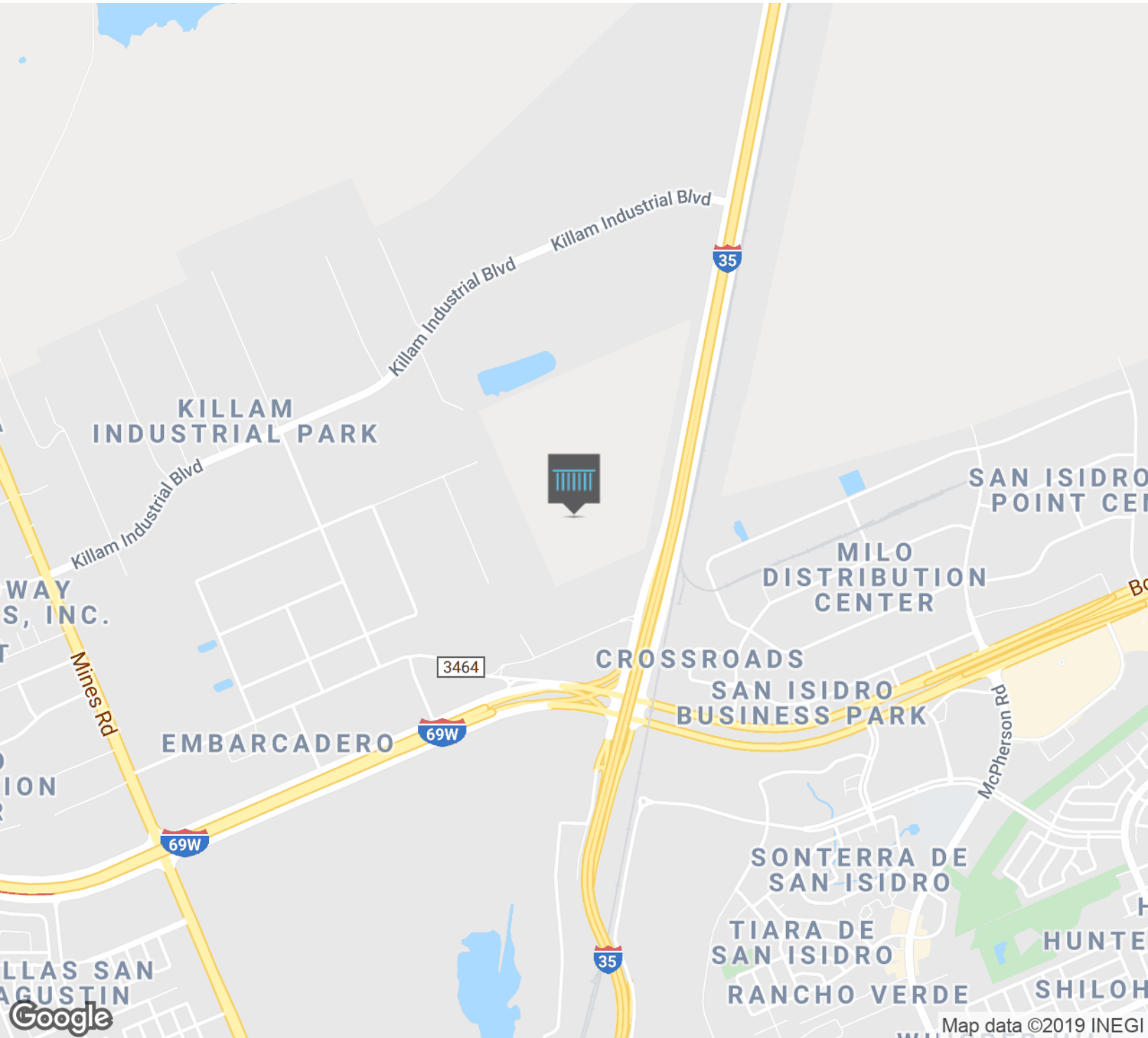
CARLO MOLANO, SIOR
carlom@forumcre.com
M: 956.523.9403
O: 956.717.9090

FOR LEASE | INDUSTRIAL PROPERTY

10302 INTERSTATE 35 | BUILDING B

KHALEDI INDUSTRIAL PARK, LAREDO, TX 78045

FORUM 
COMMERCIAL REAL ESTATE



CARLO MOLANO, SIOR

carlom@forumcre.com

M: 956.523.9403

O: 956.717.9090

