



MOTE & ASSOCIATES

Warehouse/Office For Lease

1026 Mt. Lebanon Rd., Cedar Hill



Property Information:

- +/-5,700 SF office/warehouse for lease in an established industrial area
- Building is currently under construction and office space should be complete in the next 30-45 days
- 12x12 grade level overhead doors
- Power is 120/208-3 phase power-200 amp
- 16'-18' eve height & 21' peak eve height
- Approximately 10+/- concrete parking spaces with outside storage area
- Ideal for use as contractor's office/shop (HVAC repair and sales, Electrician, or Plumber), light and heavy assembly, light manufacturing, and wholesaling, etc.

Lease rate:

\$14.50 SF
Modified Gross

Zoning:

Industrial

Location:

+/-1/4 mi. east of Hwy 67 in Cedar Hill
Easy access on/off Hwy 67

Availability:

Suite 100 +/-3,385 SF \$3,750.00 Mo.

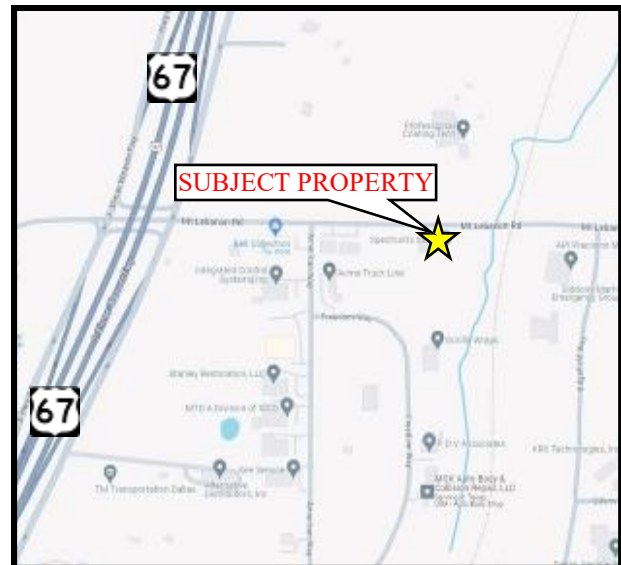
Suite features reception/waiting area, 1 office, a large warehouse with 2-12x12 grade level overhead doors, and two restrooms. Landscaping and water included.

Suite 100 & 200 +/-5,700 SF \$6,887.50 Mo.

Suite features 2 reception/waiting areas, 2 offices, large warehouse with 4-12x12 grade level overhead doors, and four restrooms. Landscaping and water included.



Offered for lease exclusively by:
Mote & Associates, Inc.
Contact: Sarah R. Mitchell
O: 972-296-2856
M: 469-569-3019
SarahM@moteandassociates.com
326 Cooper Street, Suite A1
Cedar Hill, TX 75104



All information has been obtained from a source deemed reliable but is not guaranteed, and broker makes no warranties of any kind with respect to accuracy of such information. Price subject to change without notice.



MOTE & ASSOCIATES

Interior Photos

Suite 100 Warehouse Photos

Warehouse



Warehouse



Offered for lease exclusively by:

Mote & Associates, Inc.

Contact: Sarah R. Mitchell

O: 972-296-2856

M: 469-569-3019

SarahM@moteandassociates.com

326 Cooper St. Suite A1

Cedar Hill, TX 75104



MOTE & ASSOCIATES

Suite 100 Office

1026 Mt. Lebanon Rd., Cedar Hill

Entrance



Office



Hallway



Restroom



Offered for lease exclusively by:

Mote & Associates, Inc.

Contact: Sarah R. Mitchell

O: 972-296-2856

M: 469-569-3019

SarahM@moteandassociates.com

326 Cooper St., Suite A1

Cedar Hill, Texas 75104



MOTE & ASSOCIATES

Warehouse

Suite 200 Warehouse Photos

Warehouse



Warehouse



Offered for lease exclusively by:

Mote & Associates, Inc.

Contact: Sarah R. Mitchell

O: 972-296-2856

M: 469-569-3019

SarahM@moteandassociates.com

326 Cooper St. Suite A1

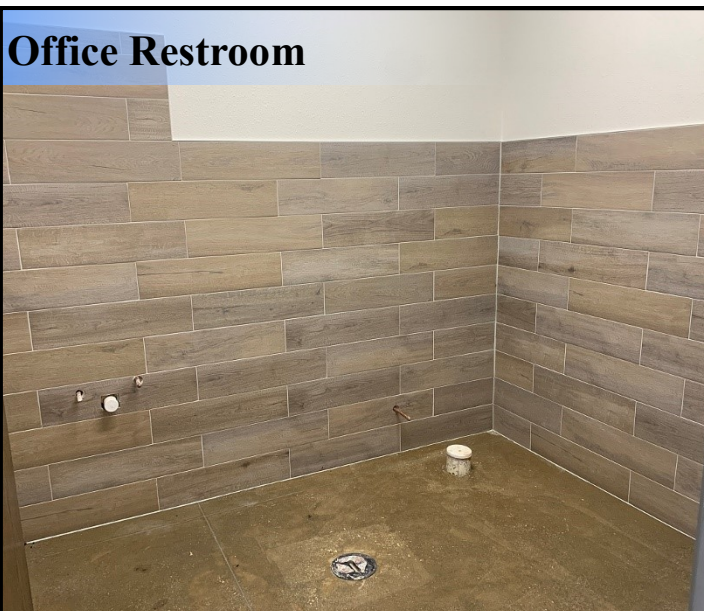
Cedar Hill, TX 75104



MOTE & ASSOCIATES

Suite 200 Office

1026 Mt. Lebanon Rd., Cedar Hill



Offered for lease exclusively by:

Mote & Associates, Inc.

Contact: Sarah R. Mitchell

O: 972-296-2856

M: 469-569-3019

SarahM@moteandassociates.com

326 Cooper St., Suite A1

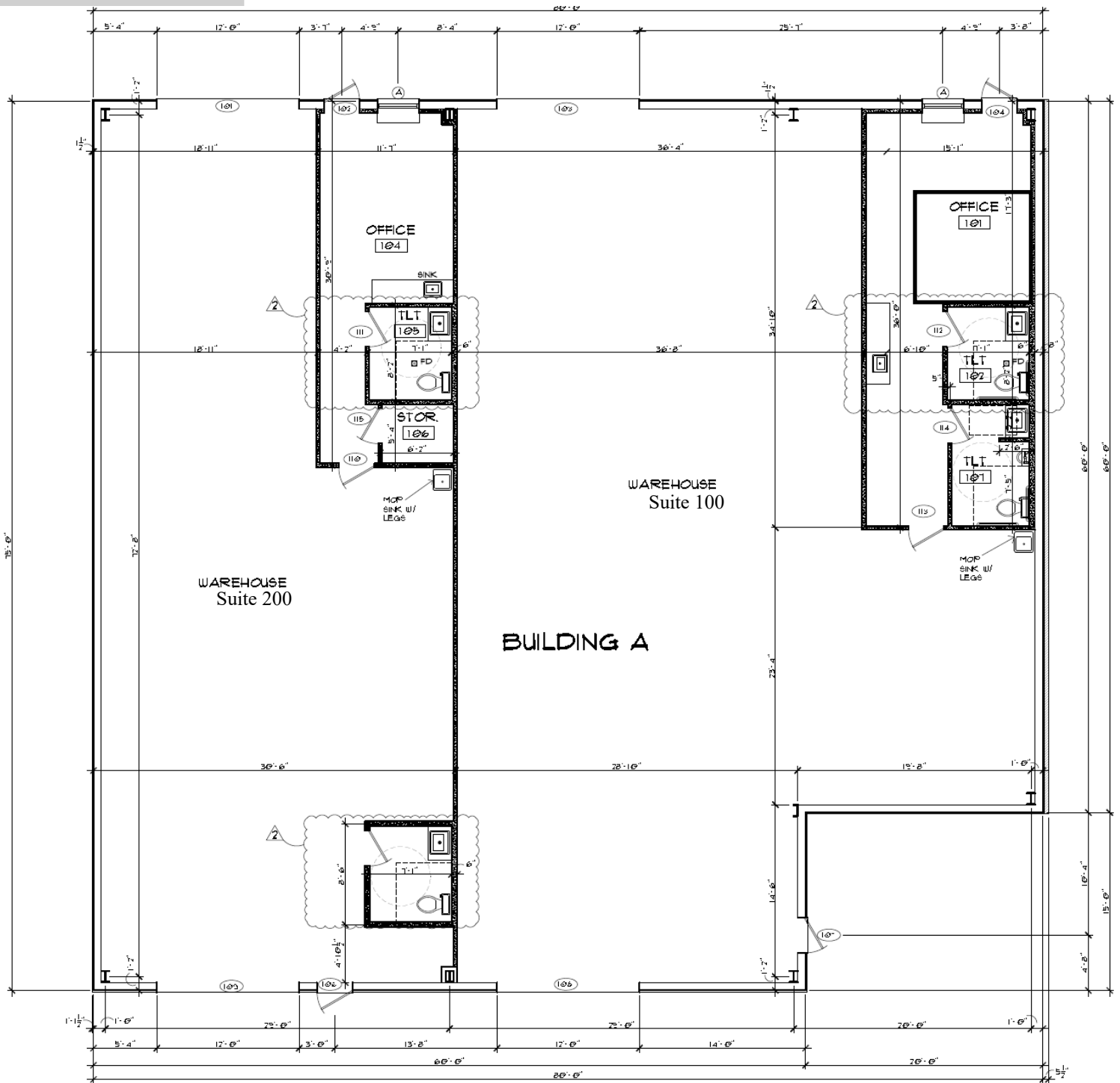
Cedar Hill, Texas 75104



MOTE & ASSOCIATES

Floor Plan

1026 Mt. Lebanon Rd., Cedar Hill



Offered for lease exclusively by:

Mote & Associates, Inc.

Contact: Sarah R. Mitchell

O: 972-296-2856

M: 469-569-3019

SarahM@moteandassociates.com

326 Cooper St. Suite A1

Cedar Hill, TX 75104

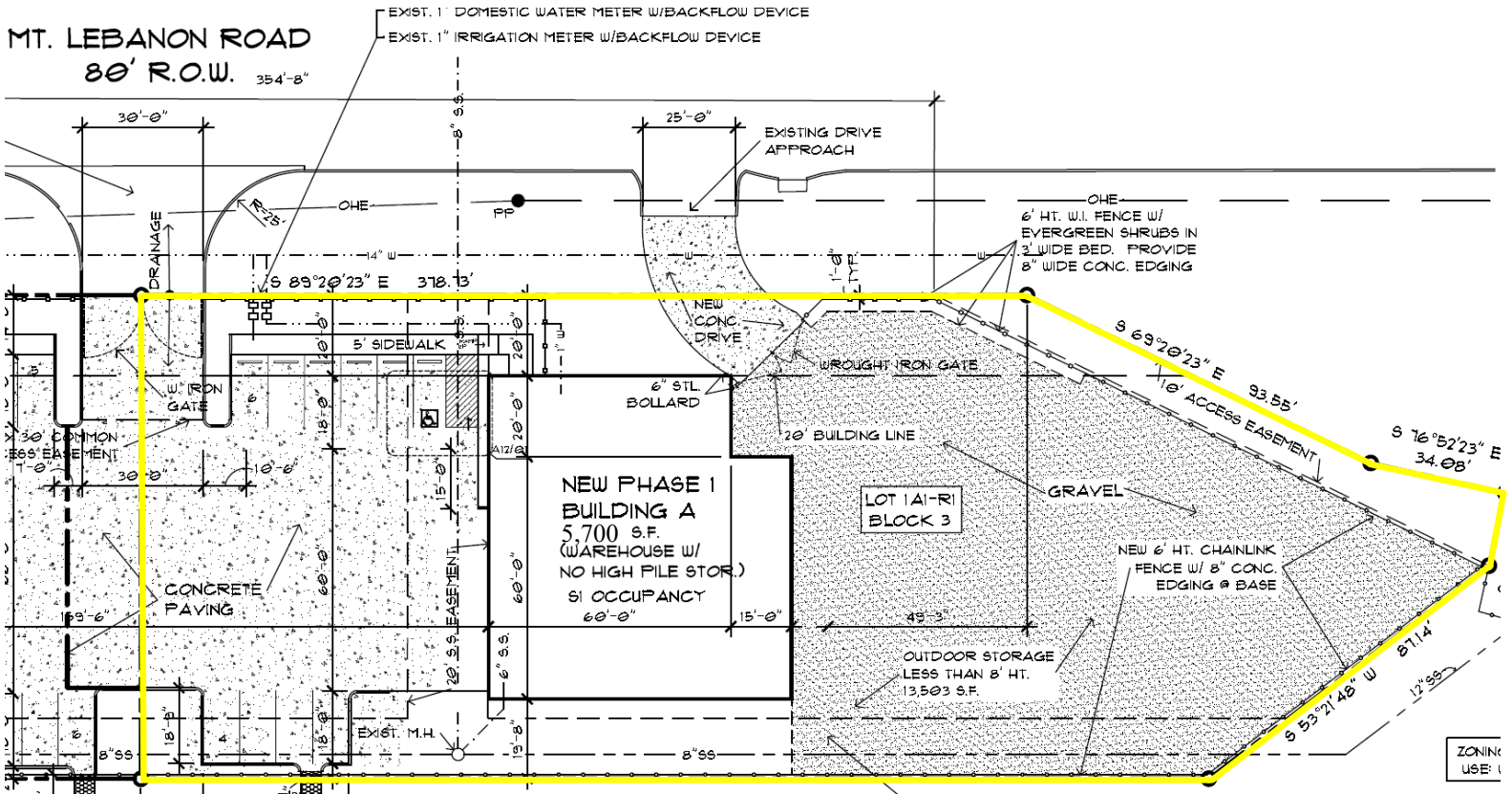
All information has been obtained from a source deemed reliable but is not guaranteed, and broker makes no warranties of any kind with respect to accuracy of such information. Price subject to change without notice.



MOTE & ASSOCIATES

Site Plan

1026 Mt. Lebanon Rd., Cedar Hill



Offered for lease exclusively by:

Mote & Associates, Inc.

Contact: Sarah R. Mitchell

O: 972-296-2856

M: 469-569-3019

SarahM@moteandassociates.com

326 Cooper St. Suite A1

Cedar Hill, TX 75104



MOTE & ASSOCIATES

Aerial View

1026 Mt. Lebanon Rd., Cedar Hill



Offered for lease exclusively by:

Mote & Associates, Inc.

Contact: Sarah R. Mitchell

O: 972-296-2856

M: 469-569-3019

SarahM@moteandassociates.com

326 Cooper St. Suite A1

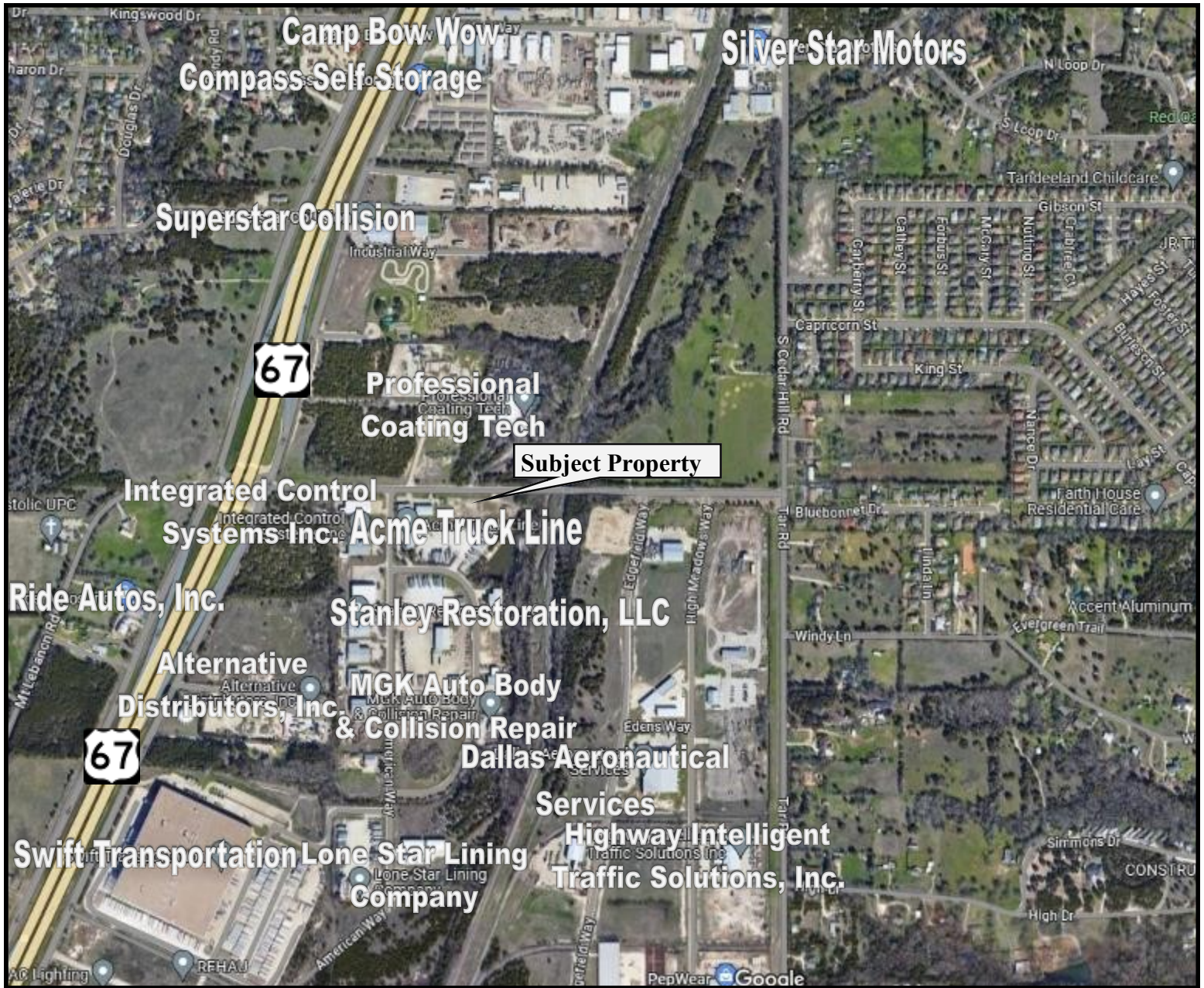
Cedar Hill, TX 75104



MOTE & ASSOCIATES

Business Map

1026 Mt. Lebanon Rd., Cedar Hill



Offered for lease exclusively by:

Mote & Associates, Inc.

Contact: Sarah R. Mitchell

O: 972-296-2856

M: 469-569-3019

SarahM@moteandassociates.com

326 Cooper St. Suite A1

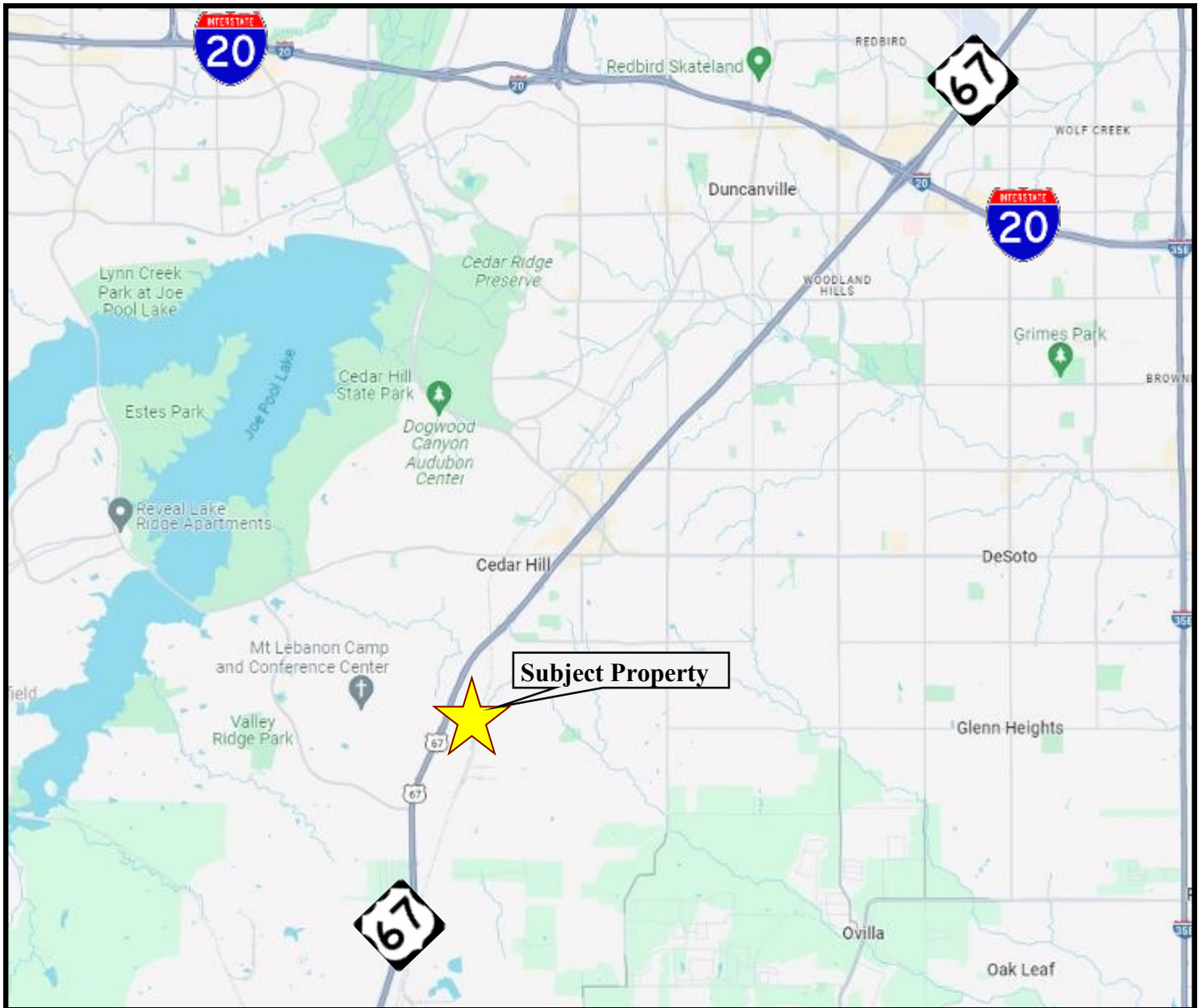
Cedar Hill, TX 75104



MOTE & ASSOCIATES

Area Map

1026 Mt. Lebanon Rd., Cedar Hill



Offered for lease exclusively by:

Mote & Associates, Inc.

Contact: Sarah R. Mitchell

O: 972-296-2856

M: 469-569-3019

SarahM@moteandassociates.com

326 Cooper St. Suite A1

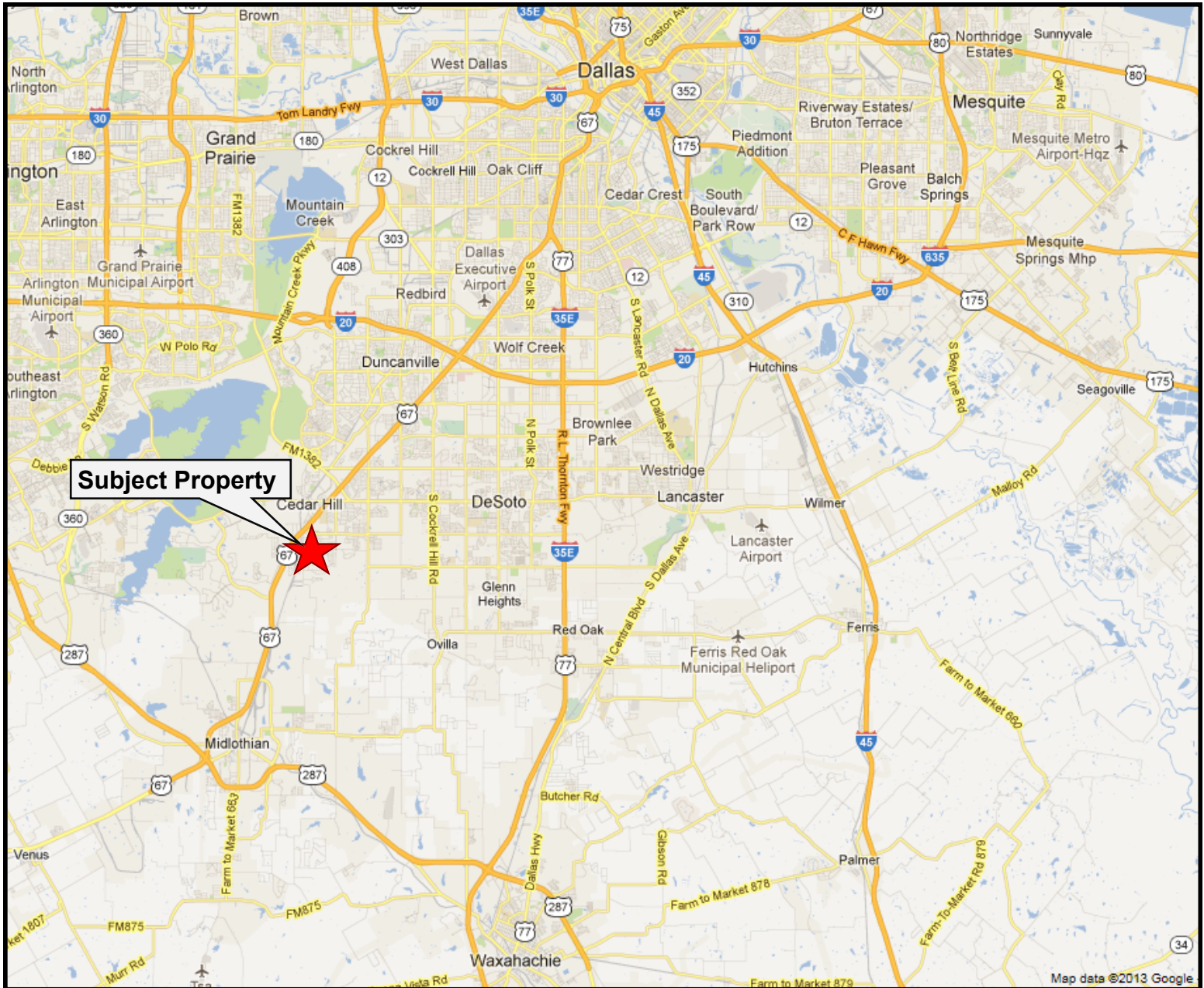
Cedar Hill, TX 75104



MOTE & ASSOCIATES

Area Map

1026 Mt. Lebanon Rd., Cedar Hill



Offered for lease exclusively by:

Mote & Associates, Inc.

Contact: Sarah R. Mitchell

O: 972-296-2856

M: 469-569-3019

SarahM@moteandassociates.com

326 Cooper St. Suite A1

Cedar Hill, TX 75104



Information About Brokerage Services

Texas law requires all real estate licensees to give the following information about brokerage services to prospective buyers, tenants, sellers and landlords.

TYPES OF REAL ESTATE LICENSE HOLDERS:

- A **BROKER** is responsible for all brokerage activities, including acts performed by sales agents sponsored by the broker.
- A **SALES AGENT** must be sponsored by a broker and works with clients on behalf of the broker.

A BROKER'S MINIMUM DUTIES REQUIRED BY LAW (A client is the person or party that the broker represents):

- Put the interests of the client above all others, including the broker's own interests;
- Inform the client of any material information about the property or transaction received by the broker;
- Answer the client's questions and present any offer to or counter-offer from the client; and
- Treat all parties to a real estate transaction honestly and fairly.

A LICENSE HOLDER CAN REPRESENT A PARTY IN A REAL ESTATE TRANSACTION:

AS AGENT FOR OWNER (SELLER/LANDLORD): The broker becomes the property owner's agent through an agreement with the owner, usually in a written listing to sell or property management agreement. An owner's agent must perform the broker's minimum duties above and must inform the owner of any material information about the property or transaction known by the agent, including information disclosed to the agent or subagent by the buyer or buyer's agent.

AS AGENT FOR BUYER/TENANT: The broker becomes the buyer/tenant's agent by agreeing to represent the buyer, usually through a written representation agreement. A buyer's agent must perform the broker's minimum duties above and must inform the buyer of any material information about the property or transaction known by the agent, including information disclosed to the agent by the seller or seller's agent.

AS AGENT FOR BOTH - INTERMEDIARY: To act as an intermediary between the parties the broker must first obtain the written agreement of each party to the transaction. The written agreement must state who will pay the broker and, in conspicuous bold or underlined print, set forth the broker's obligations as an intermediary. A broker who acts as an intermediary:

- Must treat all parties to the transaction impartially and fairly;
- May, with the parties' written consent, appoint a different license holder associated with the broker to each party (owner and buyer) to communicate with, provide opinions and advice to, and carry out the instructions of each party to the transaction.
- Must not, unless specifically authorized in writing to do so by the party, disclose:
 - that the owner will accept a price less than the written asking price;
 - that the buyer/tenant will pay a price greater than the price submitted in a written offer; and
 - any coincidental information or any other information that a party specifically instructs the broker in writing not to disclose, unless required to do so by law.

AS SUBAGENT: A license holder acts as a subagent when aiding a buyer in a transaction without an agreement to represent the buyer. A subagent can assist the buyer but does not represent the buyer and must place the interests of the owner first.

TO AVOID DISPUTES, ALL AGREEMENTS BETWEEN YOU AND A BROKER SHOULD BE IN WRITING AND CLEARLY ESTABLISH:

- The broker's duties and responsibilities to you, and your obligations under the representation agreement.
- Who will pay the broker for services provided to you, when payment will be made and how the payment will be calculated.

LICENSE HOLDER CONTACT INFORMATION: This notice is being provided for information purposes. It does not create an obligation for you to use the broker's services. Please acknowledge receipt of this notice below and retain a copy for your records.

<u>Mote & Associates, Inc.</u>	<u>0365221</u>	<u>bmote@moteandassociates.com</u>	<u>(972)296-2856</u>
Licensed Broker /Broker Firm Name or Primary Assumed Business Name	License No.	Email	Phone
<u>William A. Mote</u>	<u>0142195</u>	<u>bmote@moteandassociates.com</u>	<u>(972)296-2856</u>
Designated Broker of Firm	License No.	Email	Phone
<u>Same as above</u>			
Licensed Supervisor of Sales Agent/ Associate	License No.	Email	Phone
<u>Sarah R. Mitchell & Justin J. Clark</u>	<u>509548/663653</u>	<u>SarahM/JustinC@moteandassociates.com</u>	<u>(972)296-2856</u>
Sales Agent/Associate's Name	License No.	Email	Phone

Buyer/Tenant/Seller/Landlord Initials

Date