

Proposed Warehouse Facility

Cumberland Valley Regional Development Corporation

United Business Park Lot 10

Shippensburg, PA 17257

Southampton Township,

Franklin County

OWNER:

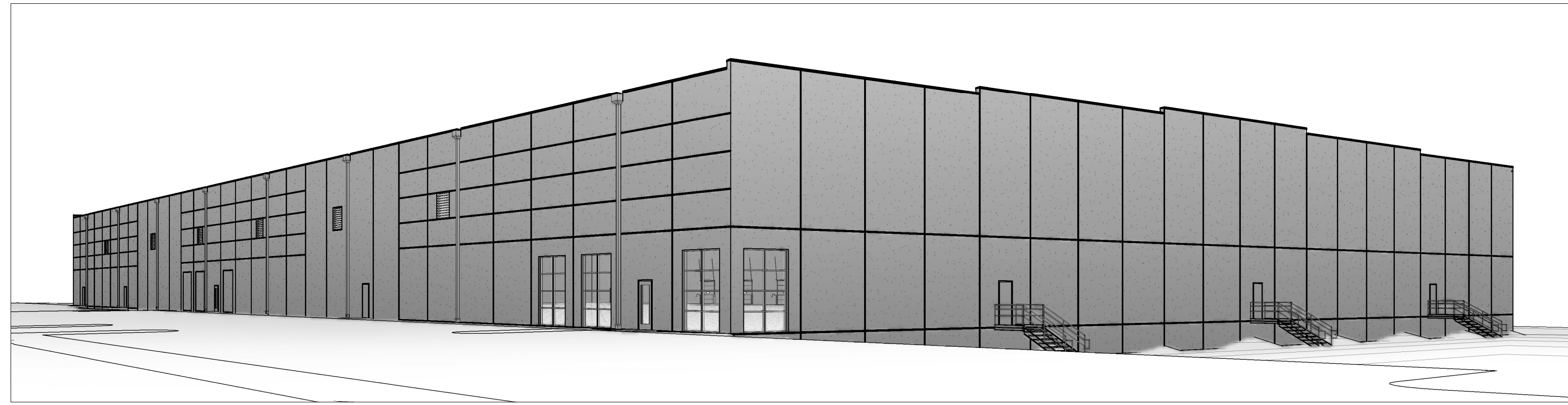
Cumberland Valley Regional Development Corporation
 75 South Second Street
 Chambersburg, PA 17201

DESIGN BUILDER:

CONEWAGO
 ENTERPRISES, INC.
 DESIGN-BUILD GENERAL CONTRACTOR
 660 Edgegrove Road, P.O. Box 407, Hanover, PA 17331
 Phone (717) 632-7722 FAX (717) 632-8665

ARCHITECT:

SAAarchitects
 600 N Hartley St
 Suite 150
 York, PA 17404
 T 717.843.3200
 F 717.699.0205



EXTERIOR PERSPECTIVE



LOCATION MAP/IMAGE

SHEET LIST	
SHEET NUMBER	SHEET NAME
ARCHITECTURAL	
A-000	COVER SHEET
A-001	CODE INFORMATION
A-002	LIFE SAFETY PLAN
A-101	FLOOR PLANS
A-102	ROOF PLANS
A-201	EXTERIOR BUILDING ELEVATIONS
A-301	BUILDING SECTIONS
A-302	WALL SECTIONS
A-401	ENLARGED PLANS
A-501	DETAILS
A-601	SCHEDULES

SHEET LIST - DESIGN BUILDERS	
UNDER SEPARATE CONTACT	
SHEET NUMBER	SHEET NAME
STRUCTURAL	
S100	GENERAL STRUCTURAL DATA
S200	FOUNDATION PLAN
S210	FOUNDATION DETAILS
S300	ROOF FRAMING PLAN
S320	FRAMING DETAILS
S321	FRAMING DETAILS
S330	TYPICAL ROOF FRAMING DETAILS
S340	TYPICAL WALL FRAMING DETAILS
S401	WALL PANEL DETAILS

DESIGN BUILDER'S STRUCTURAL DESIGN FIRM
 LJB INC

ABBREVIATIONS			
AB	ANCHOR BOLT(S), AUGER BORING	MAS	MASONRY
ACI	AMERICAN CONCRETE INSTITUTE	MAX	MAXIMUM
ACT	ACOUSTICAL CEILING TILE	MB	MALIBOX
ADA	AMERICANS WITH DISABILITIES ACT	MC	MECHANICAL CONTRACTOR
ADDL	ADDITIONAL	MECH	MECHANICAL
AFF	ABOVE FINISH FLOOR	MED	MEDICAL
AFG	ABOVE FINISHED GRADE	MEP	MECHANICAL, ELECTRICAL, PLUMBING
AHU	AIR HANDLING UNIT	MFD	MANUFACTURED
AMSC	AMERICAN INSTITUTE OF STEEL CONSTRUCTION	MFR	MANUFACTURER
AJC	ASPHALTIC CONCRETE	MIN	MINIMUM
ALT	ALTERNATE / ALTERNATING	MISC	MISCELLANEOUS
APPROX	APPROXIMATELY	MLM	MILLIMETER
ARCH	ARCHITECTURAL	MO	MASONRY OPENING
ASSOC	ASSOCIATED / ASSOCIATION	MTD	MONTHLY
ASTM	AMERICAN SOCIETY OF TESTING MATERIALS	MOUNT	MOUNTING
ATC	AUTOMATIC TEMPERATURE CONTROL	NA	NOT APPLICABLE
AWP	ACOUSTICAL WALL PANEL	NEC	NATIONAL ELECTRIC CODE
BC	BOTTOM OF CURB	NFPA	NATIONAL FIRE PROTECTION ASSOCIATION
BFF	BELOW FINISHED FLOOR	NIC	NOT IN CONTRACT
BFG	BELOW FINISHED GRADE	NO	NUMBER
BKT	BRACKET	NOT TO SCALE	
BLDG	BUILDING	NTS	ON CENTER(S)
BLVD	BOULEVARD	OC	OPENING(S)
BM	BENCH MARK	OPP	OPPOSITE
BOB	BOTTOM OF BEAM	PC	PLUMBING CONTRACTOR
BOF	BOTTOM OF FOOTING	PCF	POUNDS PER CUBIC FOOT
BOJ	BOTTOM OF JOIST	PLAM	PLASTIC LAMINATE
BOS	BOTTOM OF STEEL	PLBG	PLUMBING
BOTT	BOTTOM	PLWD	PLYWOOD
BRG	BEARING	POLYISO	POLYISOCYANURATE
BSMT	BASEMENT	PREFAB	PREFABRICATED
BSR	BUILT UP ROOF	PSR	POUNDS PER SQUARE FOOT
CART	CARTWAY	PSI	POUNDS PER SQUARE INCH
CCT	CUBICLE CURTAIN TRACK	PTD	PRESSURE TREATED LUMBER
CF	CUBIC (FOOT) FEET	PTD	PAINTED
CFM	CUBIC FEET PER MINUTE	RA	RETURN AIR
CFE	CUBIC FEET PER SECOND	RC	REINFORCED CONCRETE
CI	CAST IRON	RD	ROOF DRAIN
CIP	CAST IRON PIPE	REBAR	REINFORCING BAR
CJ	CONTRACTION / CONTROL JOINT	REG	REGISTER
CL	CENTER LINE	REINF	REINFORCED/REINFORCING
CLG	CEILING	RH	RIGHT HAND
CLR	CLEARANCE / CLEAR	RHR	RIGHT HAND REVERSE
CM	CORRUGATED METAL	RL	RAIN LEADER
CMP	CORRUGATED METAL PIPE ARCH	RO	ROUGH OPENING
CMU	CONCRETE MASONRY UNIT	RWC	RAIN WATER CONDUCTOR
CNTR	COUNTER	SA	SUPPLY AIR
CO	CLEANOUT	SECT	SECTIONAL
COB	CENTER OF BEAM	SJ	SAW JOINT
COL	COLUMN	SLV	SHORT LEG VERTICAL
CONC	CONCRETE	SOG	SLAB ON GRADE
CONF	CONFERENCE	SP	SOUNDPROOF
CONST	CONSTRUCTION	SPAND	SPANDREL
CONT	CONTINUOUS	SPECS	SPECIFICATIONS
CORRG	CORRUGATED	SPR	SPRINKLER(ED)
CPP	CORRUGATED PLASTIC PIPE	SQ	SQUARE
CPT	CARPET	SF	SQUARE FOOT/FEET
CR	CLASSROOM	SI	SQUARE INCH(ES)
CUH	CABINET UNIT HEATER	SS	STAINLESS STEEL
DBL	DOUBLE	STC	SOUND TRANSMISSION CLASS
DH	DRILL HOLE	STD	STANDARD
DIAG	DIAGONAL	STER	STERILIZER
DIFF	DIFFUSER	STOR	STORAGE
DIM	DIMENSION	STRUCT	STRUCTURAL
DP	DAMP(ROOF)ING	SV	SHEET VINYL
DS	DOWN SPOUT	SW	STORMWATER
DWG	DRAWING	T&B	TOP AND BOTTOM
EC	ELECTRICAL CONTRACTOR	T&G	TONGUE & GROOVE
EF	EACH FACE	TC	TOP OF CURB
EJ	EXPANSION JOINT	TEMP	TEMPERED
EL	ELEVATION	TG	TOP OF GRADE
ELEC	ELECTRICAL	TH	THICK/THICKNESS
ELEV	ELEVATOR	THRU	THROUGH
ENGR	ENGINEERING	TOB	TOP OF BEAM
EOF	EDGE OF FLOOR	TOF	TOP OF FOOTING
EOS	EDGE OF SLAB	TOJ	TOP OF JOIST
EQUIP	EQUIPMENT	TOS	TOP OF STEEL
EST	ESTIMATE	TYP	TYPICAL
EW	EACH WAY	UC	UNDERCUT (DOORS)
EX	EXISTING	UCC	UNIFORM CONSTRUCTION CODE
FBD	FIBER BOARD	UG	UNDERGROUND
FCO	FLOOR CLEAN OUT	UNO	UNLESS NOTED OTHERWISE
FD	FLOOR DRAIN	VB	VINYL BASE
FDN	FOUNDATION	VCT	VINYL COMPOSITION TILE
FE	FIRE EXTINGUISHER	VERT	VERTICAL
FEC	FIRE EXTINGUISHER CABINET	VEST	VESTIBULE
FFE	FINISHED FLOOR ELEVATION	VF	VERIFY IN FIELD
FIN	FINISHED	VOL	VOLUME
FIX	FIXTURE	VT	VINYL TREAD
FM	FACTORY MANUAL	WVC	VINYL WALL COVERING
FP	FULL PENETRATION WELD	WC	WATER CLOSET
FR	FIRE PROOF(ING)	WCO	WALL CLEAN OUT
FTG	FOOTING	WDW	WINDOW
FURN	FURNITURE	WGL	WIRE GLASS
GAL	GALLON	WM	WOOD MOLDING
GALV	GALVANIZED	WP	WEATHERPROOF
GC	GENERAL CONTRACTOR	WP	WORK POINT
GFI	GROUND FAULT INTERRUPTER	WSL	WATER SURFACE ELEVATION
GLBLK	GLAZED BLOCK	WT	WEIGHT
GPM	GALLONS PER MINUTE	WWF	WELDED WIRE FABRIC
GYM	GYMNASIUM		
GWB	GYPSUM WALLBOARD		
H V	HEATING AND VENTILATING		
HB	HOSE BIB		
HC	HEATING CONTRACTOR		
HM	HOLLOW METAL		
HORIZ	HORIZONTAL		
HT	HEIGHT		
HVAC	HEATING/ VENTILATING/ AIR CONDITIONING		
HW	HOT WATER		
HYD	HYDRANT		
IBC	INTERNATIONAL BUILDING CODE		
INCL	INCLUDE/ INCLUSIVE		
INSUL	INSULATE/ INSULATION		
JAN	JANITOR		
KSI	KIPS PER SQUARE INCH		
LAB	LABORATORY		
LAV	LAVATORY		
LB(S)	POUND(S)		
LDY	LAUNDRY		
LF	LINEAL FEET		
LH	LEFT HAND		
LHR	LEFT HAND REVERSE		
LIB	LIBRARY		
LLH	LONG LEG HORIZONTAL		
LLV	LONG LEG VERTICAL		

SYMBOL LEGEND	
SECTION CALLOUT	ELEVATION DESIGNATION
VIEW NUMBER SHEET NUMBER	ELEVATION
DETAIL CALLOUT	CENTERLINE
VIEW NUMBER SHEET NUMBER	CENTERLINE
EXTERIOR ELEVATION CALLOUT	WALL / PARTITION TAG
VIEW NUMBER SHEET NUMBER	WALL / PARTITION TAG
INTERIOR ELEVATION CALLOUT	COLUMN GRID DESIGNATION
VIEW NUMBER SHEET NUMBER	COLUMN GRID DESIGNATION
VIEW TITLE	DOOR TAG
VIEW TITLE SCALE: x"x" = x' x"	DOOR TAG
LEVEL	WINDOW TAG
LEVEL NAME DATUM	WINDOW TAG
ROOM TAG	REVISION DELTA
ROOM NAME ROOM NUMBER	REVISION DELTA
	ROUGH DIMENSION
	ROUGH DIMENSION
	FINISH DIMENSION
	FINISH DIMENSION

REVISIONS		
No.	Date	Description
1	07/01/2022	Issued for Permit

CONEWAGO
 ENTERPRISES, INC.
 DESIGN-BUILD GENERAL CONTRACTOR
 660 Edgegrove Road, P.O. Box 407, Hanover, PA 17331
 Phone (717) 632-7722 FAX (717) 632-8665

CONSULTANT:

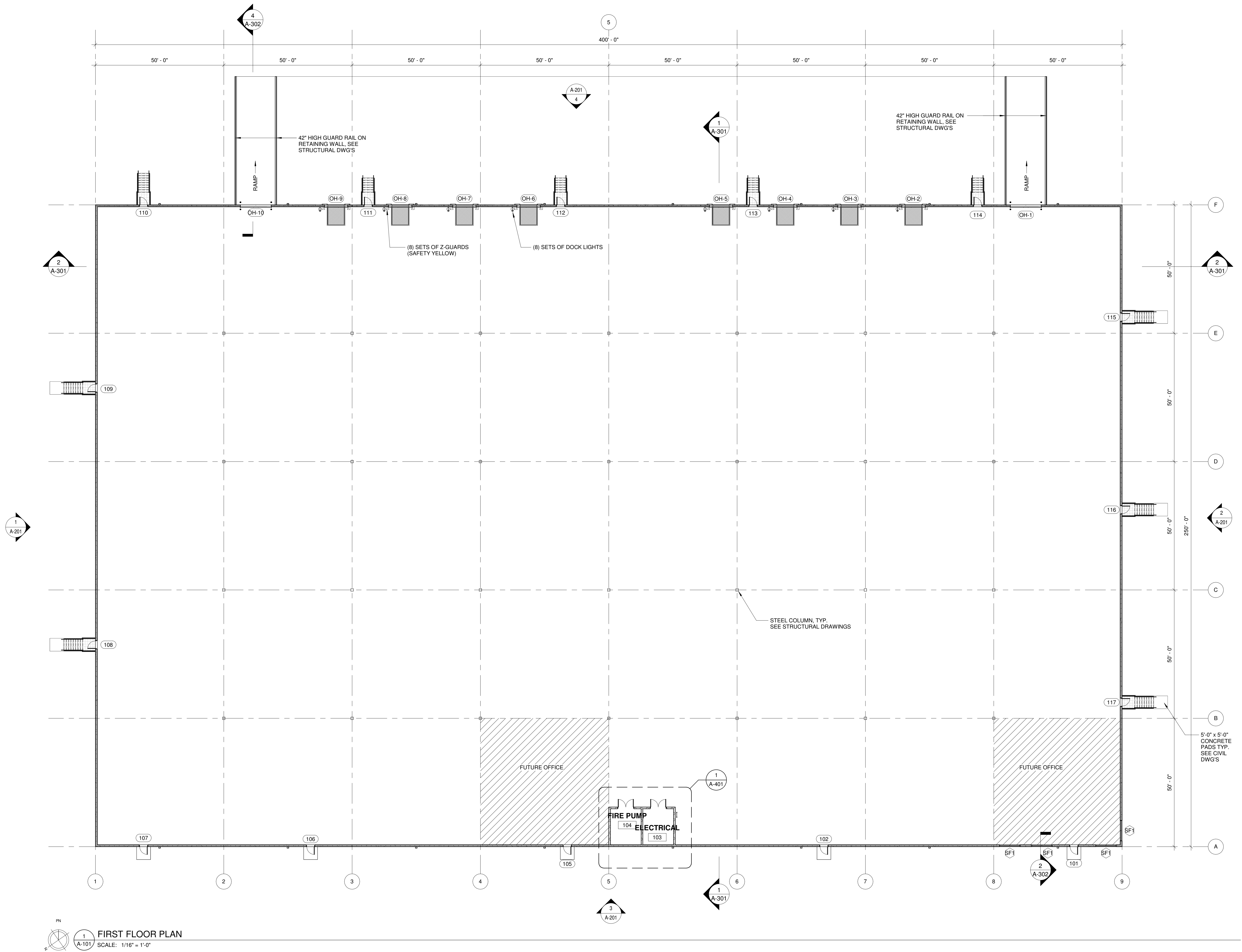
SAAarchitects
 Client centered • Smart solutions
 600 North Hartley Street, York, PA 17404
 T - 717.843.3200 www.SAAarchitects.com

DRAWING TITLE:
COVER SHEET
 Proposed Warehouse Facility
 Cumberland Valley Regional Development Corporation
 United Business Park Lot 10 Shippensburg, PA 17257
 Southampton Township, Franklin County

FILE No.: 22-060
 DATE: 07/01/2022
 SCALE: AS NOTED
 DRAWN BY: SCW/WMT

DRAWING No.: **A-000**

© 2022 SAAarchitects, Inc. All rights reserved. SAAarchitects, Inc. is a registered professional architectural firm in the State of Pennsylvania. SAAarchitects, Inc. is not responsible for the accuracy of the information provided in this drawing. The user of this drawing assumes all liability for the use of this drawing.




1 FIRST FLOOR PLAN
 SCALE: 1/16" = 1'-0"

C:\Users\jw\OneDrive\Documents\2022\22-060\22-060.dwg (12/22/2021)

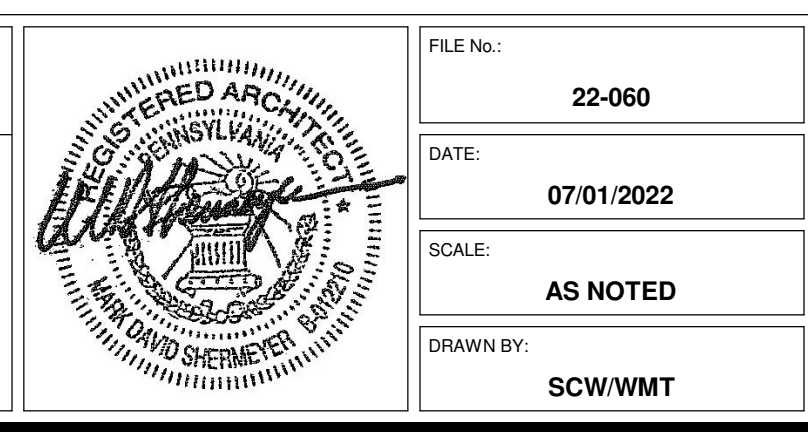
REVISIONS		
No.	Date	Description
1	07/01/2022	Issued for Permit

CONEWAGO
 ENTERPRISES, INC.
 DESIGN-BUILD GENERAL CONTRACTOR
 660 Edgegrove Road, P.O. Box 407, Hanover, PA 17331
 Phone (717) 632-7722 FAX (717) 632-8665

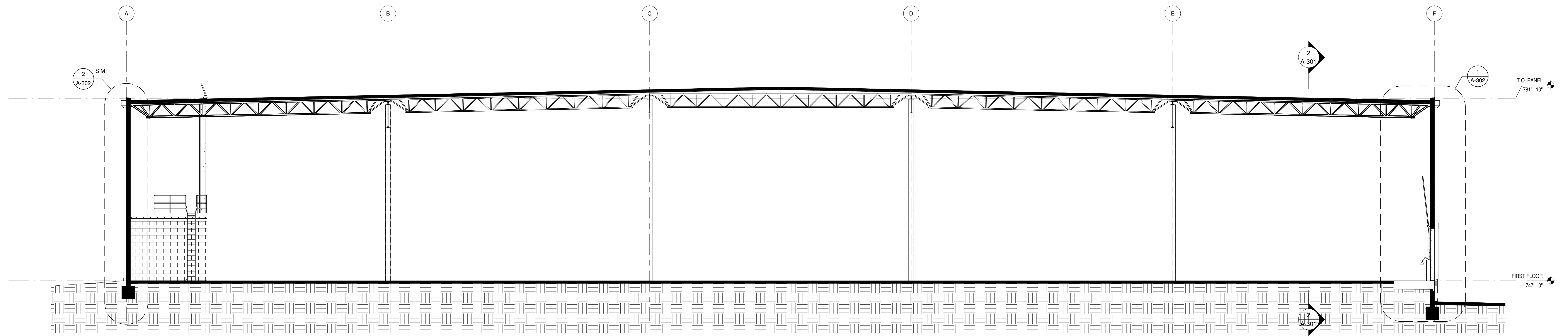
CONSULTANT:


 Client centered • Smart solutions
 600 North Hartley Street, York, PA 17404
 T - 717.843.3200 www.SAAarchitects.com

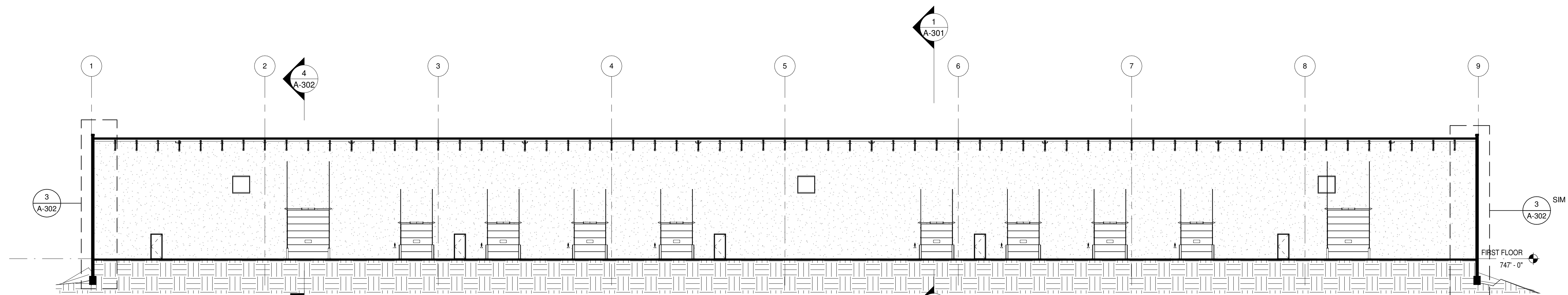
DRAWING TITLE:
FLOOR PLANS
 Proposed Warehouse Facility
Cumberland Valley Regional Development Corporation
 United Business Park Lot 10 Shippensburg, PA 17257
 Southampton Township, Franklin County


 FILE No.: 22-060
 DATE: 07/01/2022
 SCALE: AS NOTED
 DRAWN BY: SCW/WMT

DRAWING No.: **A-101**



1 BUILDING SECTION
 SCALE: 1/8" = 1'-0"



2 BUILDING SECTION
 SCALE: 1/16" = 1'-0"

REVISIONS		
No.	Date	Description
1	07/01/2022	Issued for Permit

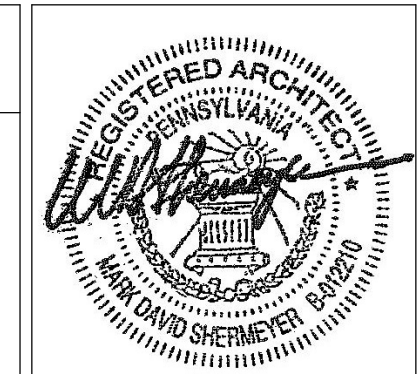
CONEWAGO
 ENTERPRISES, INC.
 DESIGN-BUILD GENERAL CONTRACTOR
 660 Edgegrove Road, P.O. Box 407, Hanover, PA 17331
 Phone (717) 632-7722 FAX (717) 632-8665

CONSULTANT:

SAAarchitects
 Client centered • Smart solutions
 600 North Hartley Street, York, PA 17404
 T - 717.843.3200 www.SAAarchitects.com

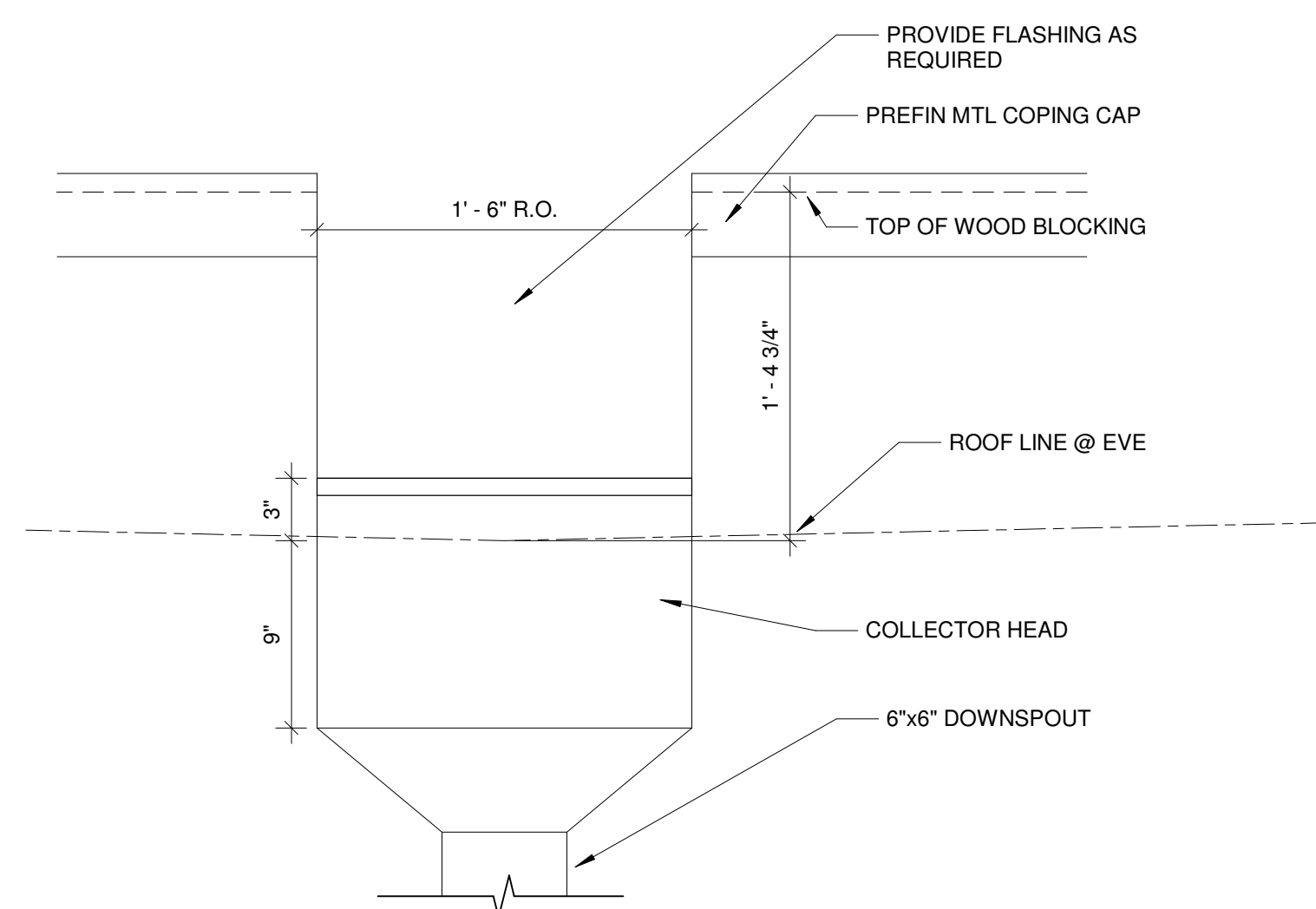
DRAWING TITLE:
 © 2022, SAAarchitects, Inc.

BUILDING SECTIONS
 Proposed Warehouse Facility
Cumberland Valley Regional Development Corporation
 United Business Park Lot 10 Shippensburg, PA 17257
 Southampton Township, Franklin County

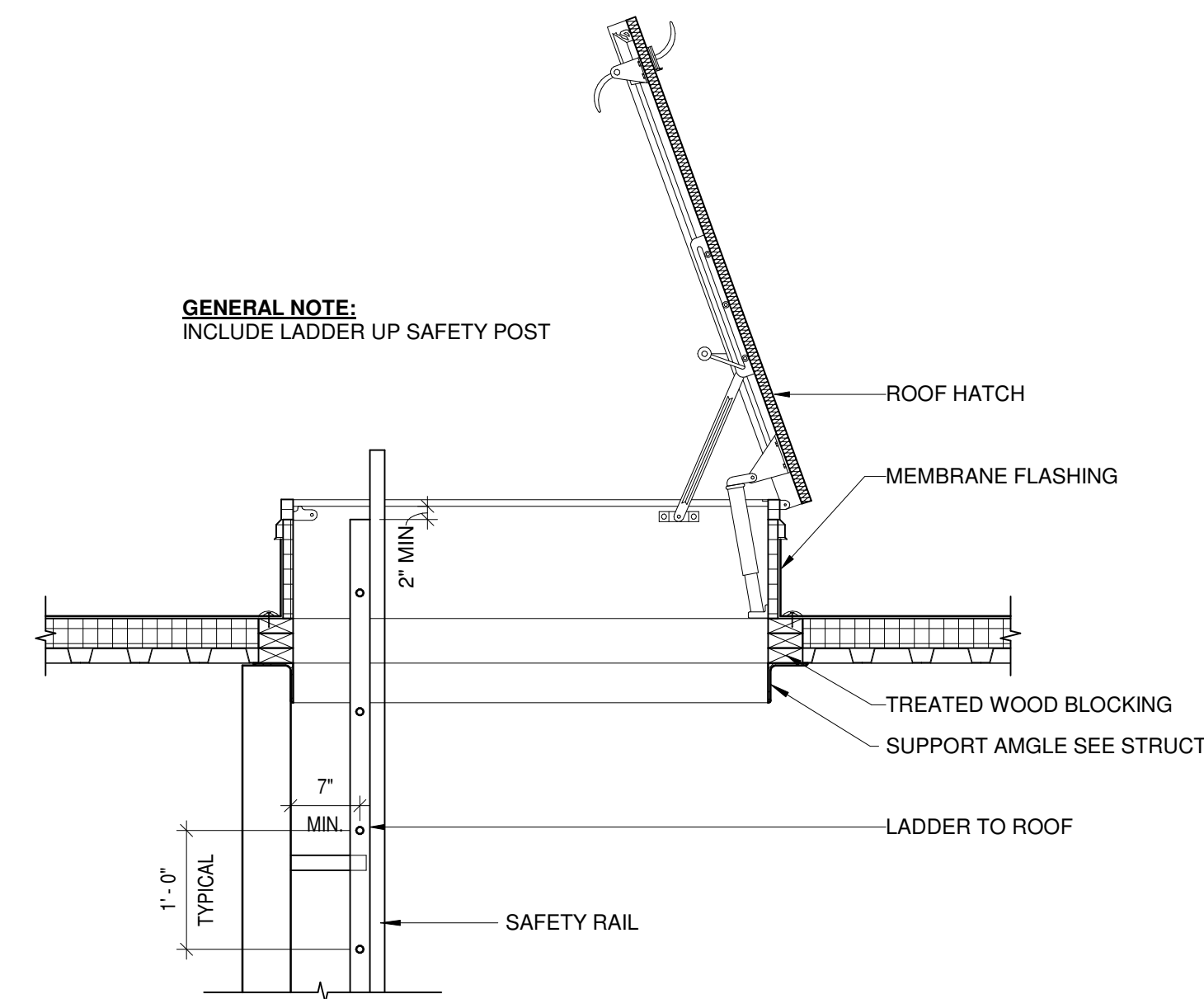


FILE No.: 22-060
 DATE: 07/01/2022
 SCALE: AS NOTED
 DRAWN BY: SCW/WMT

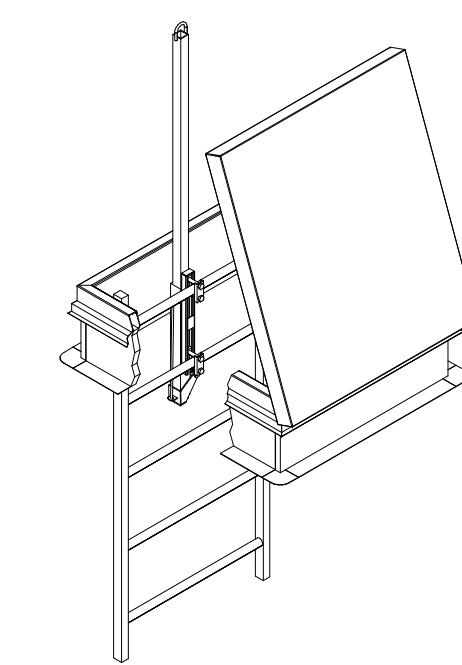
DRAWING No.: **A-301**



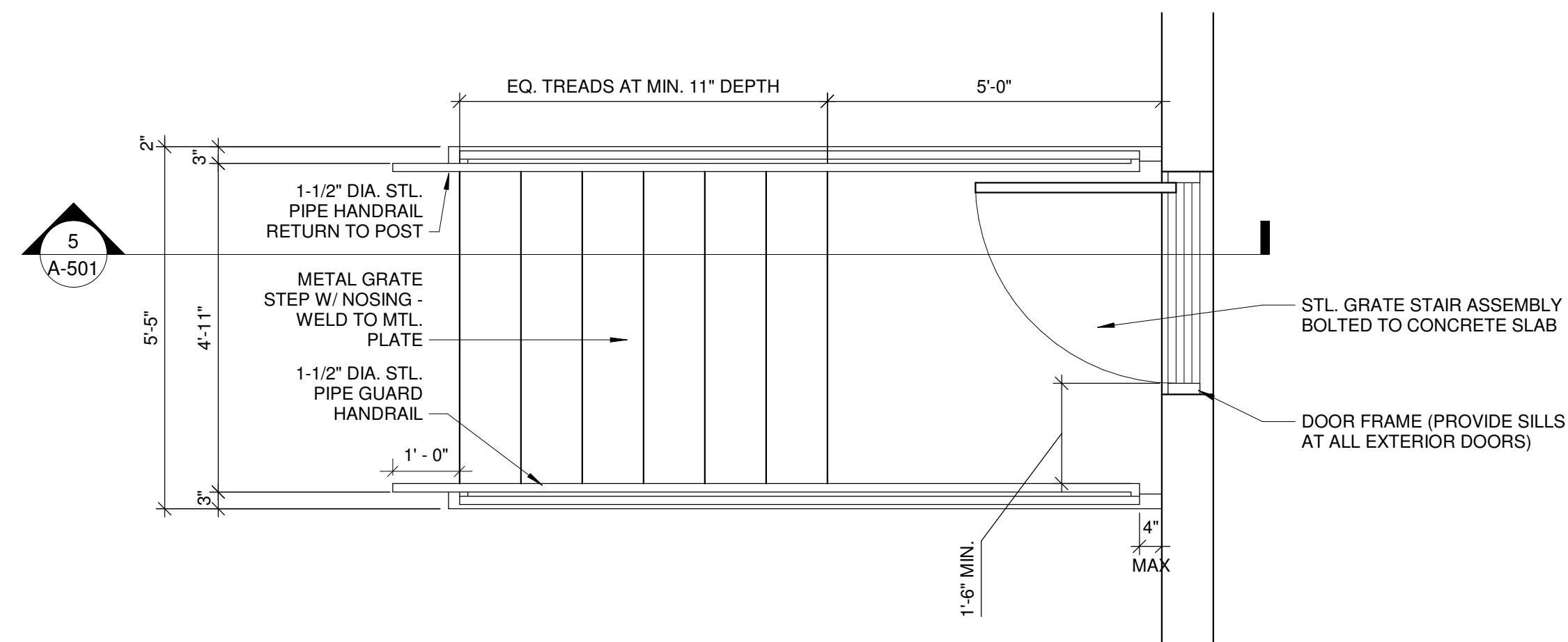
1 COLLECTOR HEAD DETAIL @ NOTCH
SCALE: 1 1/2" = 1'-0"



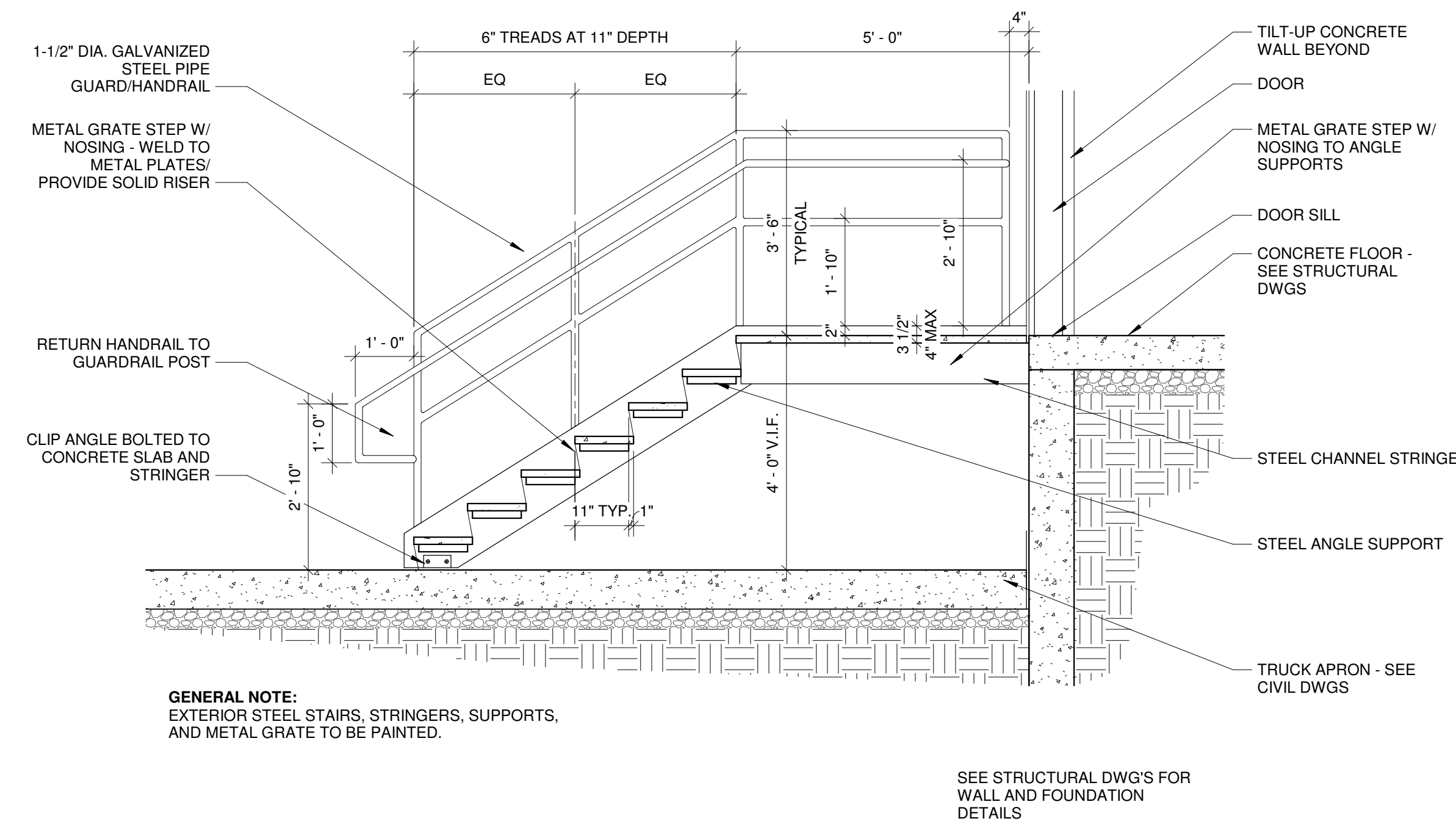
2 ROOF HATCH DETAIL WITHOUT BARRIER
SCALE: 3/4" = 1'-0"



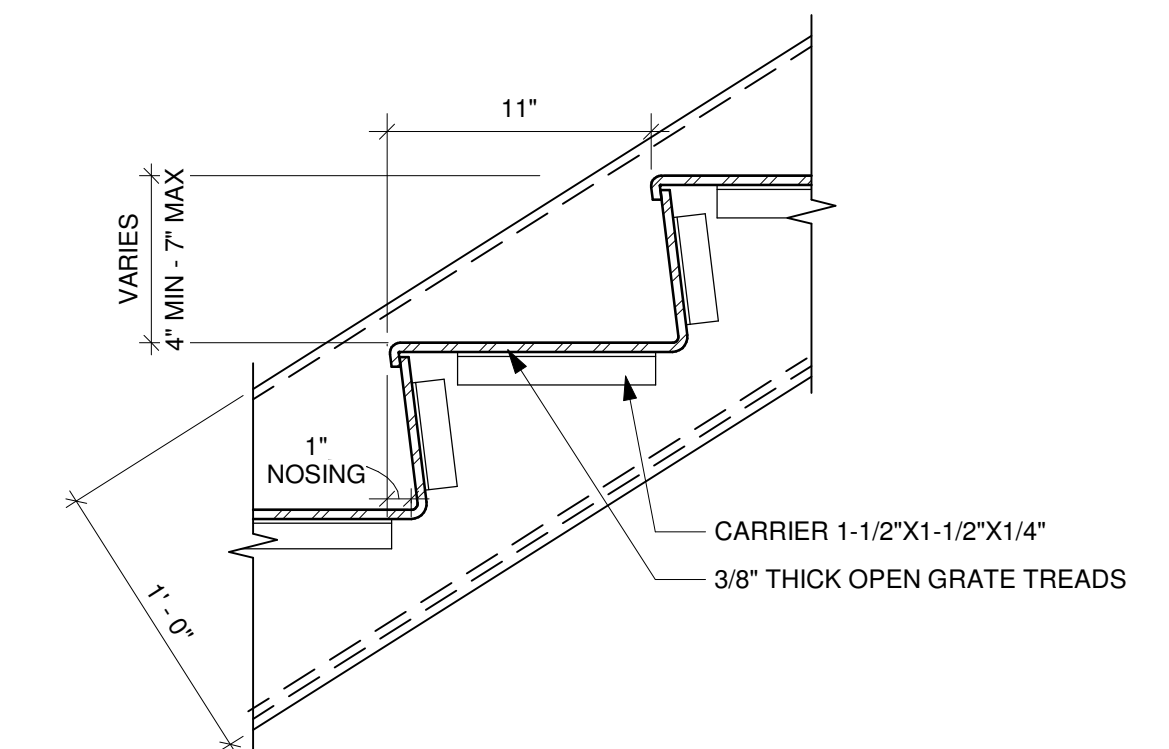
3 LADDER UP SAFETY POST
SCALE: 3/4" = 1'-0"



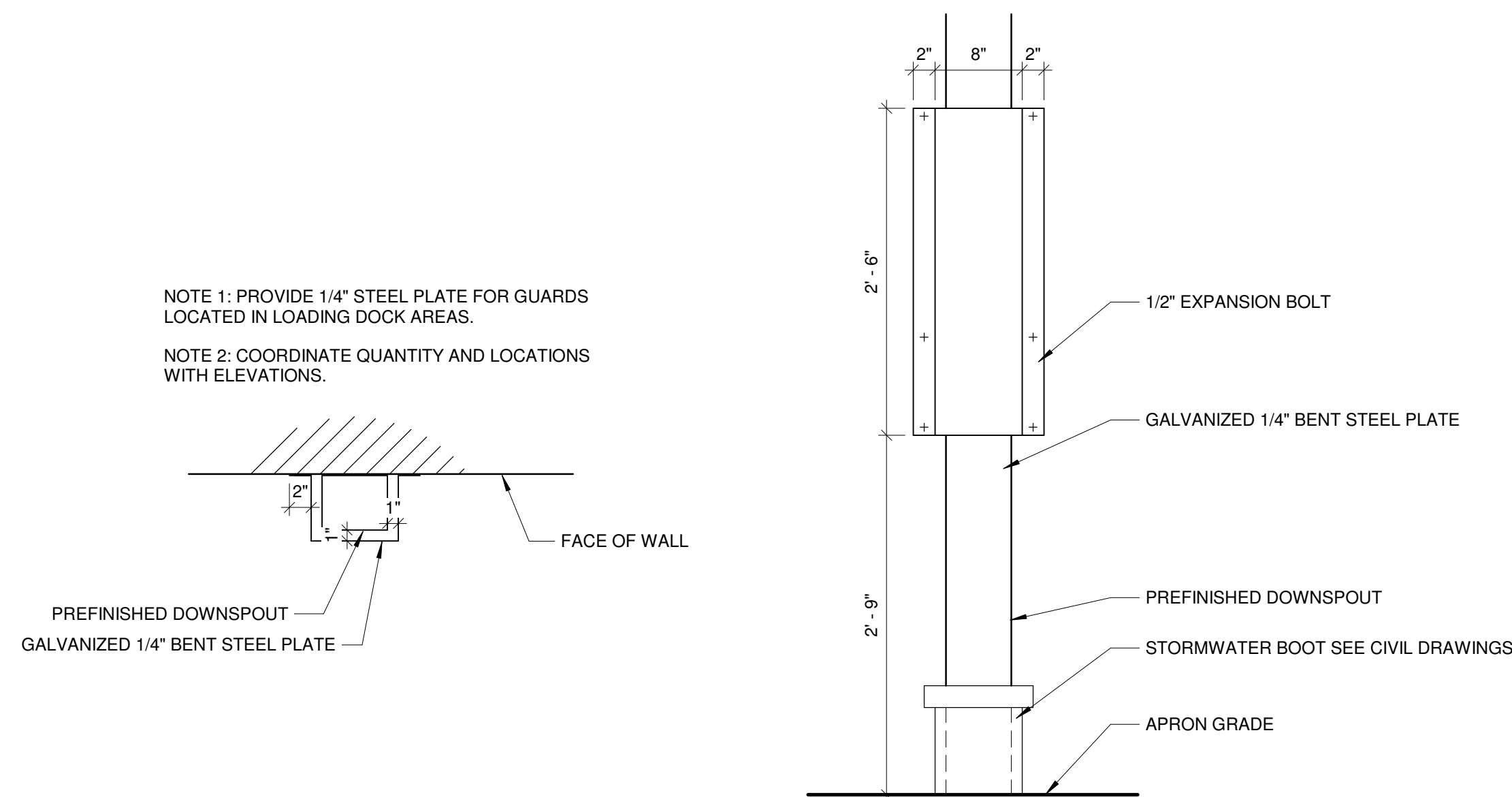
4 TYPICAL STAIR PLAN
SCALE: 1/2" = 1'-0"



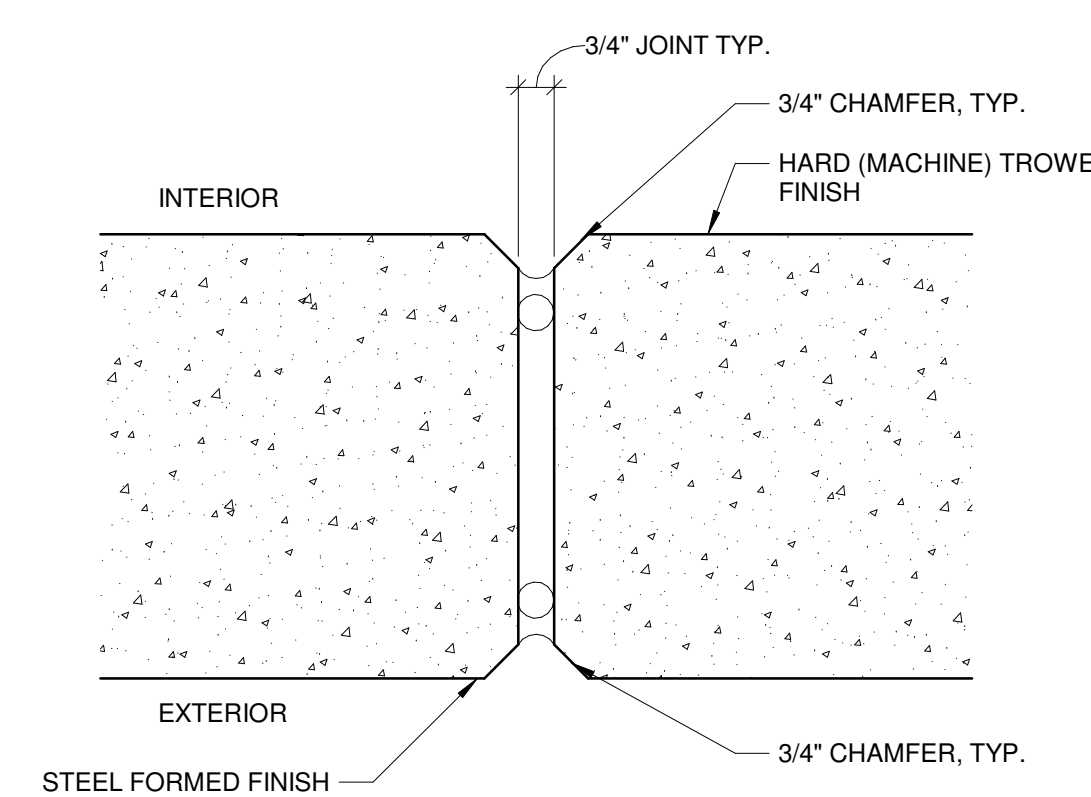
5 TYPICAL STAIR DETAILS
SCALE: 1/2" = 1'-0"



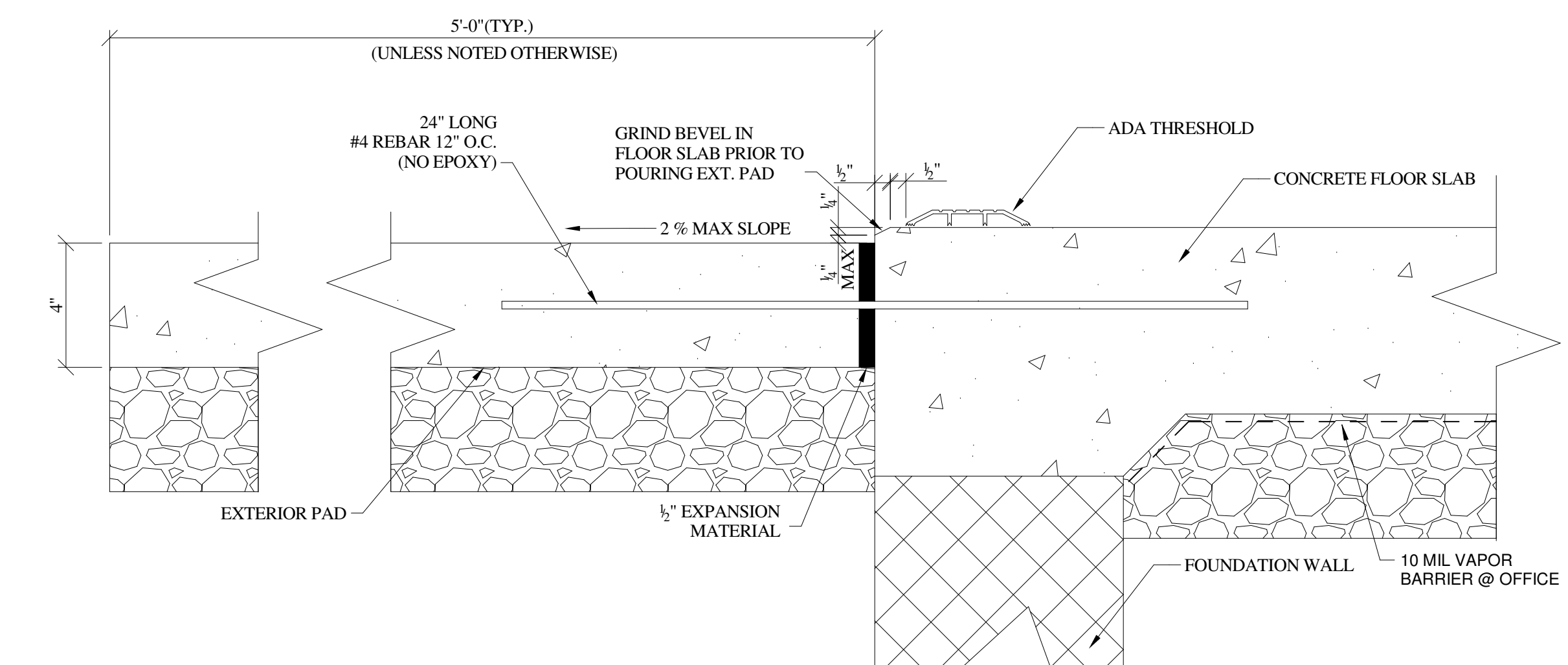
6 STEEL STAIR TREAD - TYP.
SCALE: 1 1/2" = 1'-0"



7 DOWNSPOUT GUARD DETAILS
SCALE: 1" = 1'-0"



8 TYPICAL PANEL JOINT DETAIL - PLAN VIEW
SCALE: 3" = 1'-0"



9 TYPICAL THRESHOLD DETAIL
SCALE: 3" = 1'-0"

REVISIONS		
NO.	DATE	DESCRIPTION
1	07/01/2022	Issued for Permit

CONEWAGO
ENTERPRISES, INC.
DESIGN-BUILD GENERAL CONTRACTOR
660 Edgegrove Road, P.O. Box 407, Hanover, PA 17331
Phone (717) 632-7722 FAX (717) 632-8665

CONSULTANT:

SAAarchitects
Client centered • Smart solutions
600 North Hartley Street, York, PA 17404
T - 717.843.3200 www.SAAarchitects.com

DRAWING TITLE:
© 2022, SAAarchitects, Inc.

DETAILS
Proposed Warehouse Facility
Cumberland Valley Regional Development Corporation
United Business Park Lot 10 Shippensburg, PA 17257
Southampton Township, Franklin County

FILE No.: 22-060
DATE: 07/01/2022
SCALE: AS NOTED
DRAWN BY: SCW/WMT

A-501

