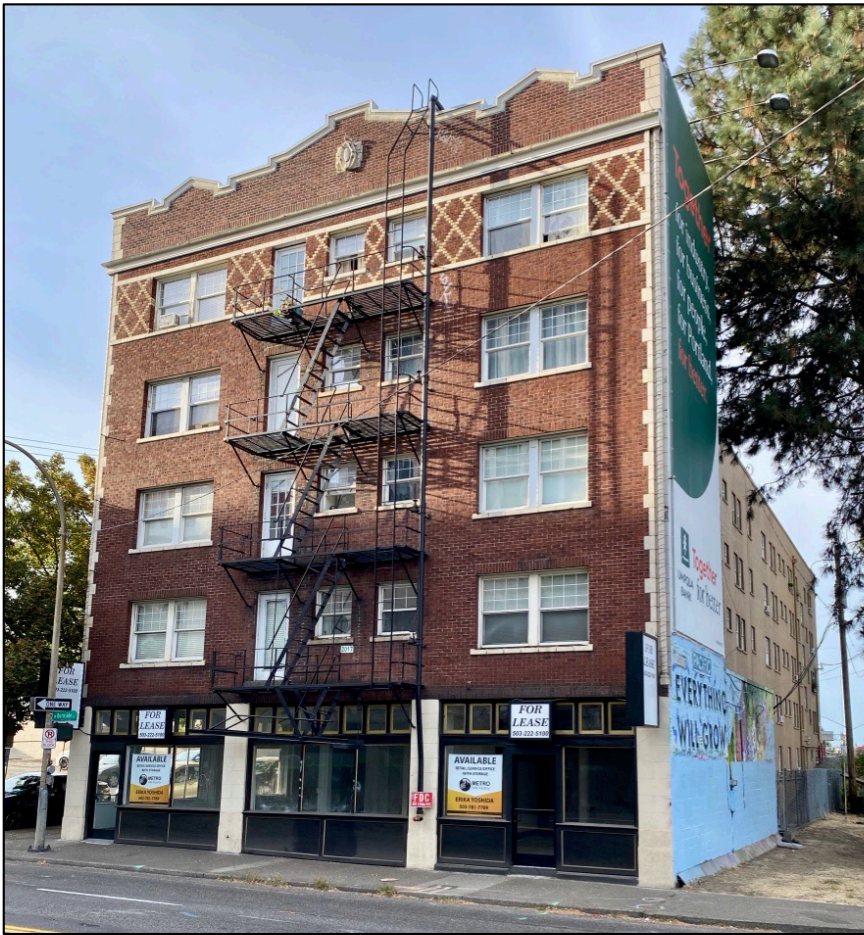


PRIME RETAIL/CREATIVE OFFICE + STORAGE FOR LEASE



PROPERTY HIGHLIGHTS

- Fantastic signage and visibility on W. Burnside
- New storefront, facade and windows
- New commercial mini split HVAC system
- Immediate access to I-405 freeway & MAX
- Two blocks to Providence Park Stadium
- Retail, service or creative office opportunity
- Two restrooms & fire sprinklered basement storage
- Population nearly 55,000 within 1 mile radius

ADDRESS: 1539-1541 W. Burnside Street, Portland

AVAILABLE: 932 RSF - \$1,700/month including NNN

1,645 RSF - \$3,015/month including NNN

Can be combined to 2,577 RSF

ZONING: CX (Central Commercial)

TRAFFIC COUNTS: 19,648 ADT (2020)

LOCATION: Highly trafficked Stadium District, Goose Hollow

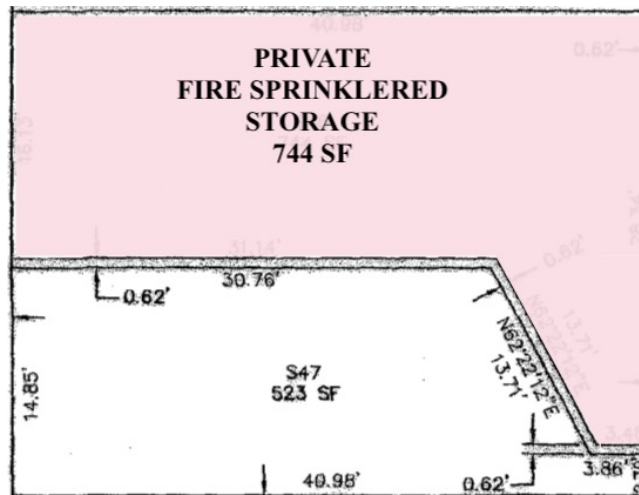
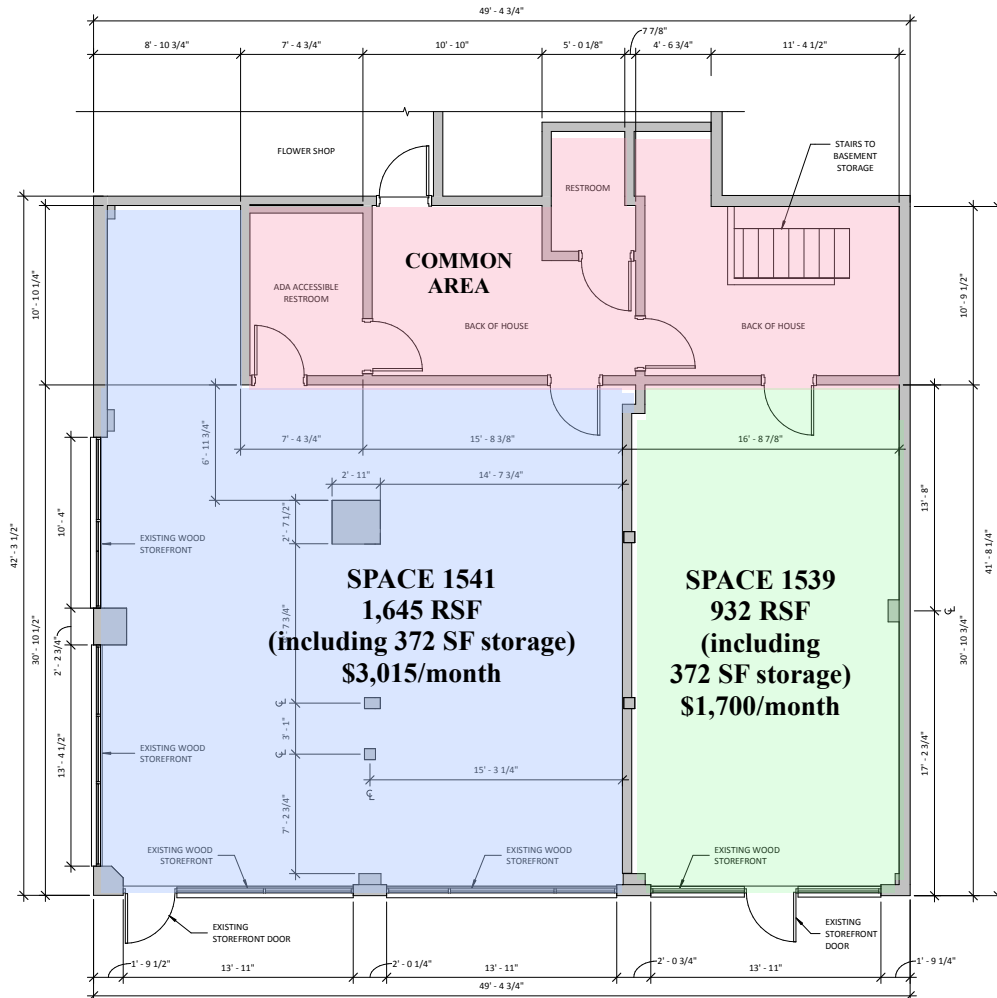


For more information or a property tour contact:

Erika Yoshida
Principal Broker, MBA
503.781.7789
Erika@metronw.com



FLOOR PLAN



For more information or a property tour contact:

Erika Yoshida
Principal Broker, MBA
503.781.7789
Erika@metronw.com

