

# FOR LEASE

Runnels Professional Building

Suite 100 4399 Commons Dr East Destin, FL 32541



Suite A	\$750/mo
Suite B	\$900/mo.
Suite C	LEASED
Suite D	LEASED
Suite E	LEASED
Suite F	LEASED

## Full Service Lease Office Suites

Class A Professional Office Space

1550 SF Total Space

6 Executive Suites Available or Entire Space Leased as a Whole

Equipped with up to date technology

Common Well Kitchen/Utility

Equipment/Technology Room

Two Large Corner offices

Two Offices with balconies on 13th Hole Kelly Plantation Golf Course

## LOCATION

Just West of Mid Bay Bridge Road on 13th Hole of Kelly Plantation Golf Course



COMMERCIAL REAL ESTATE

FOR ADDITIONAL INFORMATION, CONTACT:

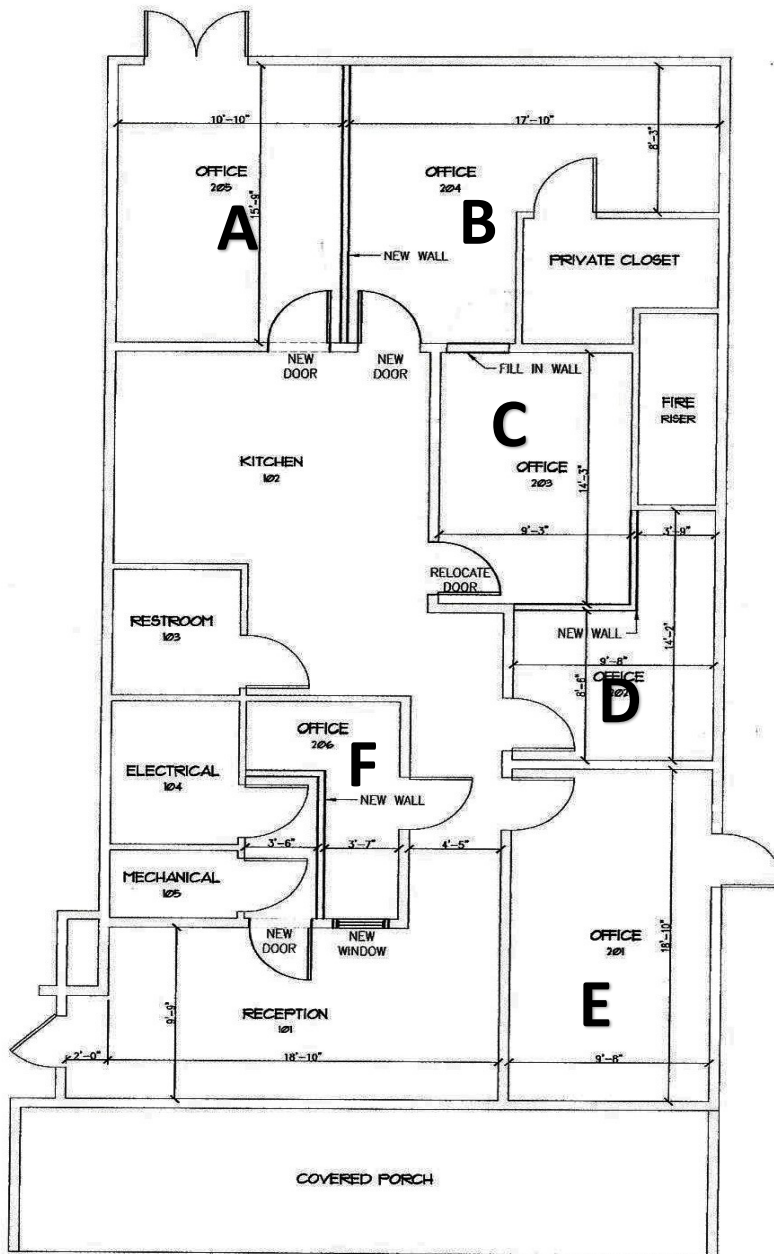
AGENT NAME | PHONE NUMBER | [agent@TLGproperty.com](mailto:agent@TLGproperty.com)

217 JOHN KNOX ROAD, TALLAHASSEE, FLORIDA 32303

Ph: 850.385.6363 Fax: 850.385.6337 [www.TLGproperty.com](http://www.TLGproperty.com)



The information shown or contained herein is believed to be accurate but is not warranted or guaranteed, is subject to errors, omissions and changes without notice and should be independently verified.



1 FLOOR PLAN  
SCALE: 3/8"=1'-0"



COMMERCIAL REAL ESTATE

FOR ADDITIONAL INFORMATION, CONTACT:

KEITH TAYLOR | 850-830-0643 | ktaylor@TLGproperty.com

217 JOHN KNOX ROAD, TALLAHASSEE, FLORIDA 32303

Ph: 850.385.6363 Fax: 850.385.6337 www.TLGproperty.com



The information shown or contained herein is believed to be accurate but is not warranted or guaranteed, is subject to errors, omissions and changes without notice and should be independently verified.



**COMMERCIAL REAL ESTATE**

**FOR ADDITIONAL INFORMATION, CONTACT:**

**KEITH TAYLOR | 850-830-0643 | [ktaylor@TLGproperty.com](mailto:ktaylor@TLGproperty.com)**

217 JOHN KNOX ROAD, TALLAHASSEE, FLORIDA 32303

Ph: 850.385.6363 Fax: 850.385.6337 [www.TLGproperty.com](http://www.TLGproperty.com)



*The information shown or contained herein is believed to be accurate but is not warranted or guaranteed, is subject to errors, omissions and changes without notice and should be independently verified.*