

FOR
LEASE

120 CONSTITUTION DRIVE

MENLO PARK, CALIFORNIA



CBRE

24,195 SF FREESTANDING OFFICE/R&D BUILDING AVAILABLE NOW

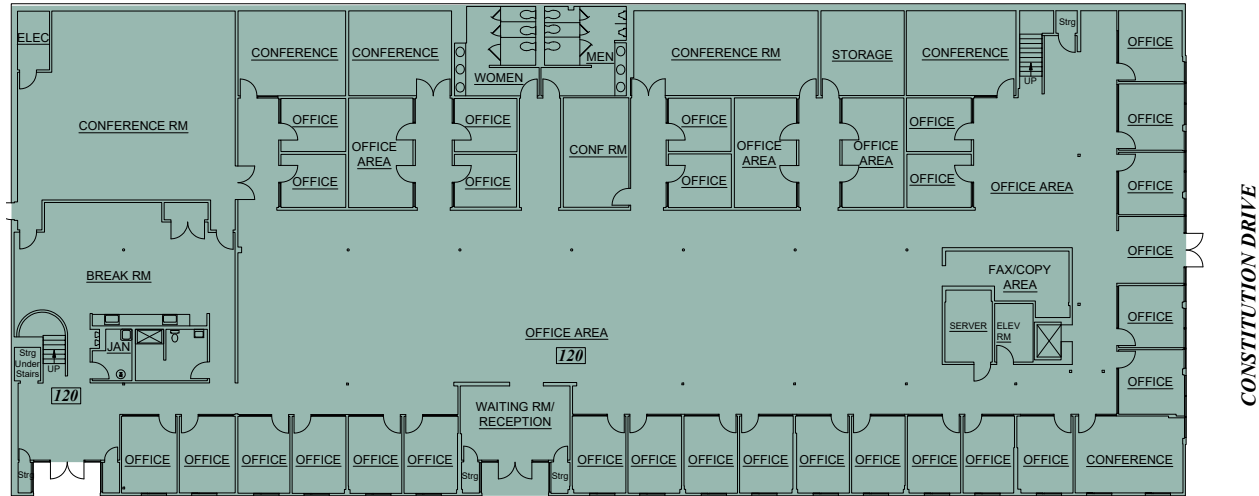
PROPERTY HIGHLIGHTS

- + 24,195 SF of Office Available
- + Standalone building in the middle of Facebook's New Menlo Gateway Campus
- + Great for Technology or Profession Service Office use
- + Excellent Access to Highway 101 and Dumbarton Bridge
- + High End Improvements and Mezzanine Space
- + Free daily Marsh Road Shuttle to downtown Menlo Park Caltrain
- + Building Signage Available
- + ±22 ceilings
- + Low NNN expenses
- + 71 parking spaces: 3.0/1,000



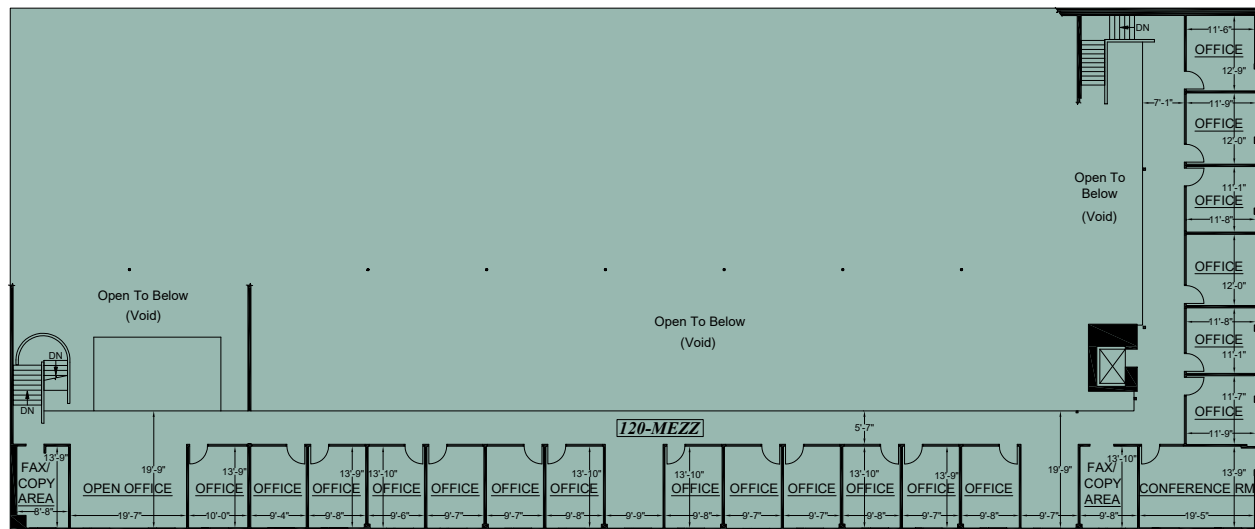
FLOOR PLANS

FIRST FLOOR



33 offices | 7 conference rooms | 34 desks, 14 workstations

SECOND FLOOR



19 offices | 1 conference room | 24 desks

KITCHEN



OFFICE AREA



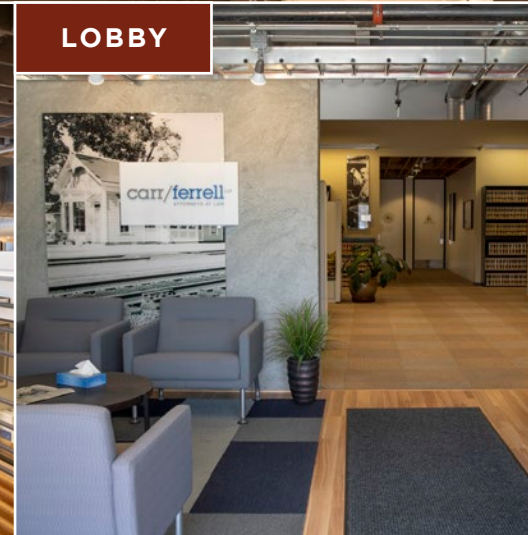
CONFERENCE ROOMS



MEZZANINE OFFICE



LOBBY





120 CONSTITUTION DRIVE



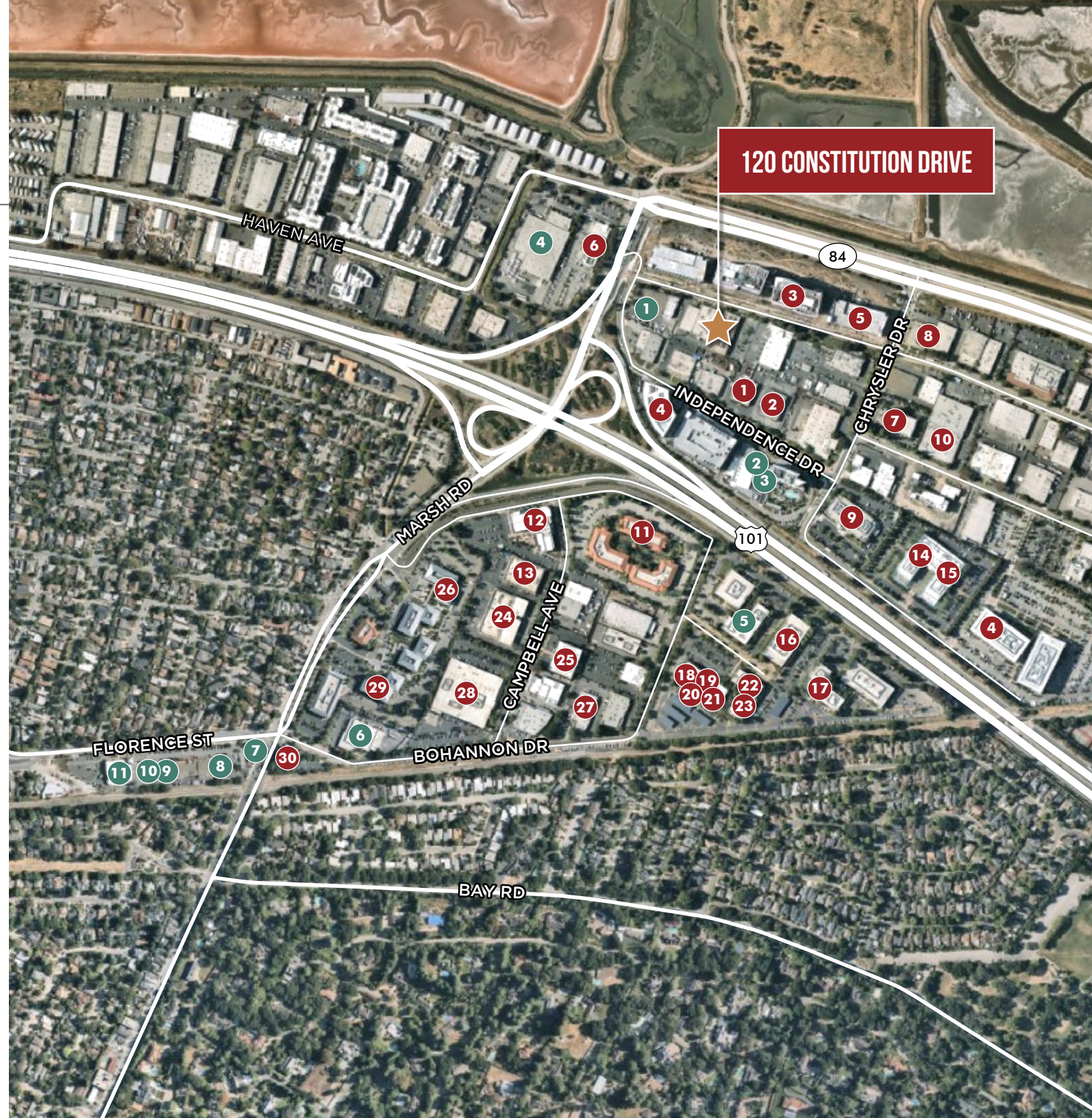
AMENITIES MAP

NEARBY AMENITIES

- 1 Palo Alto Baking Company
- 2 Porta Blu
- 3 Hotel Nia
- 4 FedEx Ship Center
- 5 Lee's Deli
- 6 U.S. Post Office
- 7 Starbucks
- 8 Yat Sing
- 9 Freewheel Brewing Company
- 10 Squeeze In
- 11 Delucchi's Market

NEIGHBORING TENANTS

- 1 L-3 Communications
- 2 Arrinex, Inc.
- 3 Facebook
- 4 Facebook
- 5 Facebook
- 6 Quicken, Inc.
- 7 SPACES - Menlo Park
- 8 Sparta Science
- 9 Facebook
- 10 InfoIMAGE, Inc.
- 11 Latham & Watkins LLP
- 12 Hogan Lovells US LLP
- 13 Memry Corporation
- 14 Corcept Therapeutics
- 15 Exponent Inc
- 16 E Trade Financial
- 17 Stanford
- 18 Boardvantage
- 19 OpenX
- 20 Academixdirect
- 21 Lewis Roca Rothgerber Christie LLP
- 22 Ayasdi
- 23 Deliv
- 24 EarLens Corporation
- 25 Kepsry
- 26 Kilpatrick Townsend
- 27 Apria Healthcare
- 28 Abbott Vascular
- 29 Orrick, Herrington & Sutcliffe LLP
- 30 Kramer Levin Naftalis Frankel



120 CONSTITUTION DRIVE

HAVEN AVE

84

MARSH RD

INDEPENDENCE DR

CHRYSLER DR

101

FLORENCE ST

BOHANNON DR

CAMPBELL AVE

BAY RD

MARSH ROAD SHUTTLE

MENLO PARK CALTRAIN TO MARSH ROAD BUSINESS PARKS

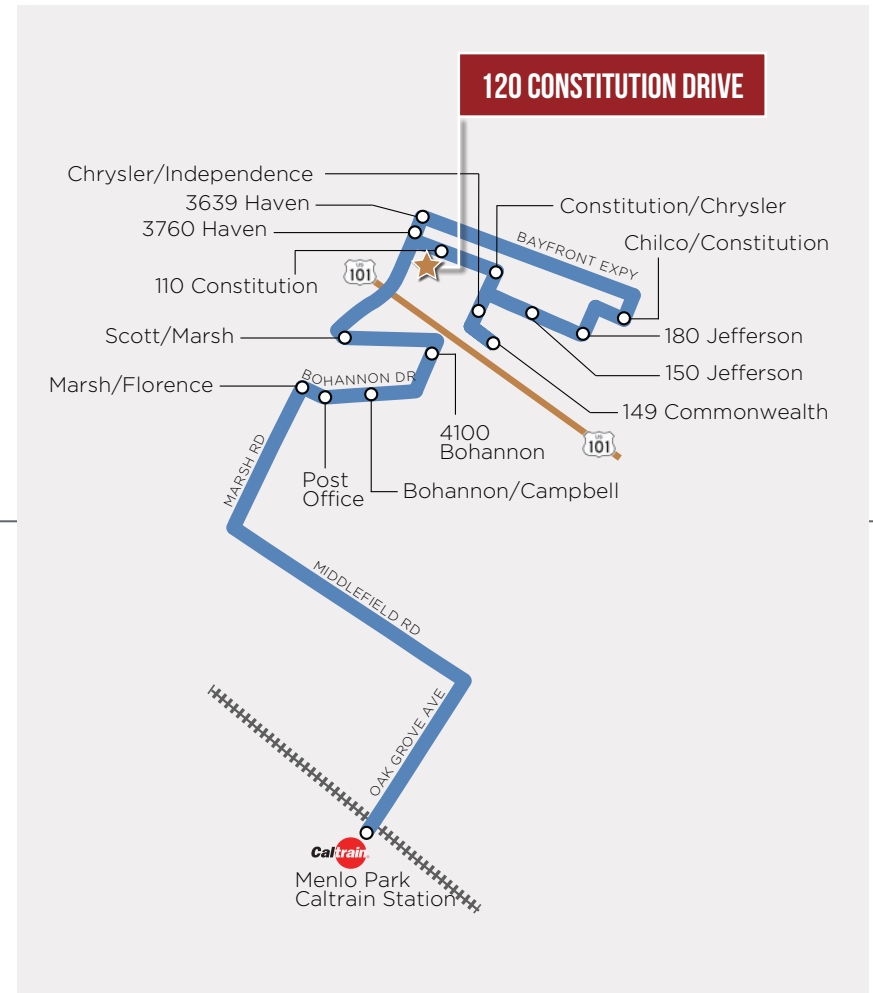
Effective April 1, 2019

Morning Schedule

	RUN 1	RUN 2	RUN 3	RUN 4	RUN 5	RUN 6	RUN 7
Menlo Park Caltrain (Depart)	6:59	7:34	8:01	8:34	8:56	9:34	10:01
Post Office	7:06	7:41	8:08	8:41	9:03	9:41	10:08
Bohannon/Campbell	7:07	7:42	8:09	8:42	9:04	9:42	10:09
4100 Bohannon	7:08	7:43	8:10	8:43	9:05	9:43	10:10
Scott/Marsh	7:10	7:45	8:12	8:45	9:07	9:45	10:12
110 Constitution ^{Note 1}	--	--	--	--	--	--	--
Constitution/Chrysler ^{Note 2}	7:16	7:51	8:18	8:51	9:13	9:51	10:18
Chrysler/Independence	7:17	7:52	8:19	8:52	9:14	9:52	10:19
149 Commonwealth	7:18	7:53	8:20	8:53	9:15	9:53	10:20
150 Jefferson/180 Jefferson	7:20	7:55	8:22	8:55	9:17	9:55	10:22
Chilco/Constitution	7:22	7:57	8:24	8:57	9:19	9:57	10:24
3639 Haven (Anton Menlo)	7:28	8:03	8:30	9:03	9:25	10:03	10:30
3760 Haven (Quicken)	7:30	8:05	8:32	9:05	9:27	10:05	10:32
Marsh/Florence	7:35	8:10	8:37	9:10	9:32	10:10	10:37
Menlo Park Caltrain (Arrive)	7:44	8:19	8:46	9:19	9:41	--	--

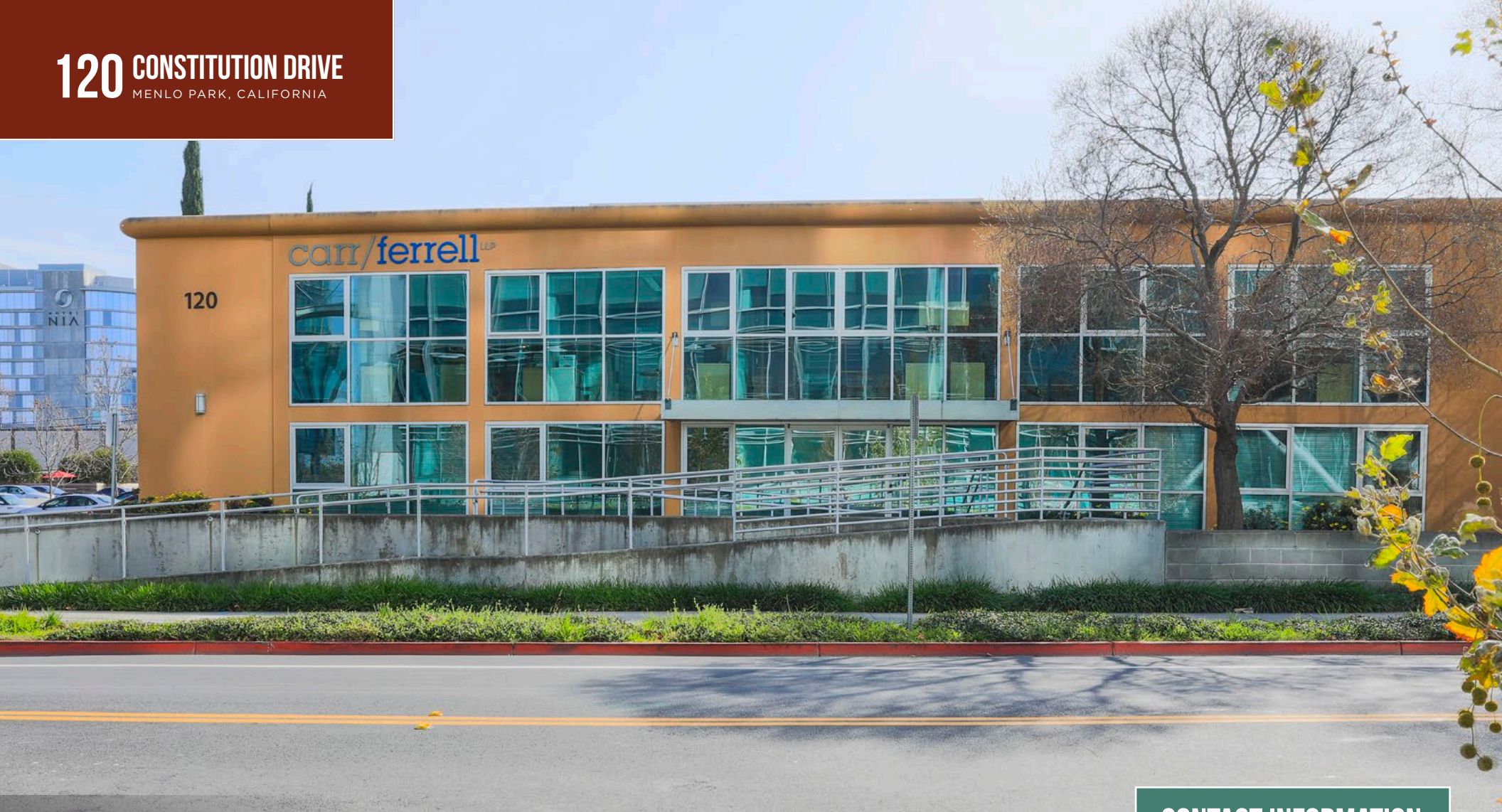
Afternoon Schedule

	RUN 1	RUN 2	RUN 3	RUN 4	RUN 5	RUN 6
Menlo Park Caltrain (Depart)	--	--	3:44	4:12	5:16	5:27
110 Constitution ^{Note 1}	--	--	--	--	--	--
Constitution/Chrysler ^{Note 2}	--	--	--	--	--	--
Chrysler/Independence	3:10	3:38	4:42	4:53	5:42	5:53
149 Commonwealth	3:11	3:39	4:43	4:54	5:43	5:54
150 Jefferson/180 Jefferson	3:13	3:41	4:45	4:56	5:45	5:56
Chilco/Constitution	3:15	3:43	4:47	4:58	5:47	5:58
3639 Haven (Anton Menlo)	3:21	3:49	4:53	5:04	5:53	6:04
3760 Haven (Quicken)	3:23	3:51	4:55	5:06	5:55	6:06
Scott/Marsh	3:28	3:56	5:00	5:11	6:00	6:11
4100 Bohannon	3:30	3:58	5:02	5:13	6:02	6:13
Bohannon/Campbell	3:31	3:59	5:03	5:14	6:03	6:14
Post Office	3:32	4:00	5:04	5:15	6:04	6:15
Marsh/Florence	3:35	4:03	5:07	5:18	6:07	6:18
Menlo Park Caltrain (Arrive)	3:44	4:12	5:16	5:27	6:16	6:27



120 CONSTITUTION DRIVE

MENLO PARK, CALIFORNIA



CONTACT INFORMATION

RYAN CARR

Vice President

Lic. 01924765

+1 650 494 5115

ryan.carr@cbre.com

DAMON SCHOR

Senior Vice President

Lic. 01317778

+1 650 494 5121

damon.schor@cbre.com

© 2020 CBRE, Inc. The information contained in this document has been obtained from sources believed reliable. While CBRE, Inc. does not doubt its accuracy, CBRE, Inc. has not verified it and makes no guarantee, warranty or representation about it. It is your responsibility to independently confirm its accuracy and completeness. Any projections, opinions, assumptions or estimates used are for example only and do not represent the current or future performance of the property. The value of this transaction to you depends on tax and other factors which should be evaluated by your tax, financial and legal advisors. You and your advisors should conduct a careful, independent investigation of the property to determine to your satisfaction the suitability of the property for your needs. CBRE and the CBRE logo are service marks of CBRE, Inc. and/or its affiliated or related companies in the United States and other countries. All other marks displayed on this document are the property of their respective owners. PMStudio_March2020