



IOI
NORTH MAIN

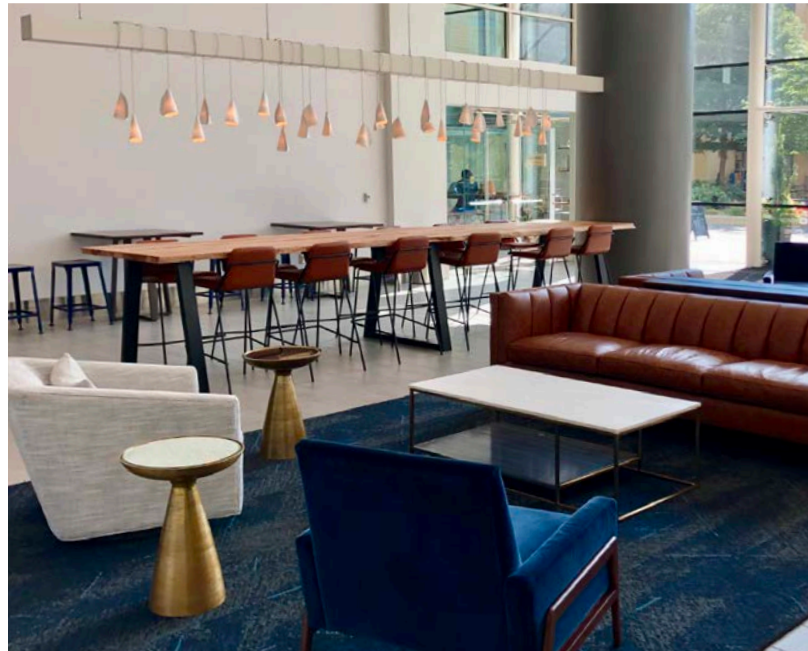
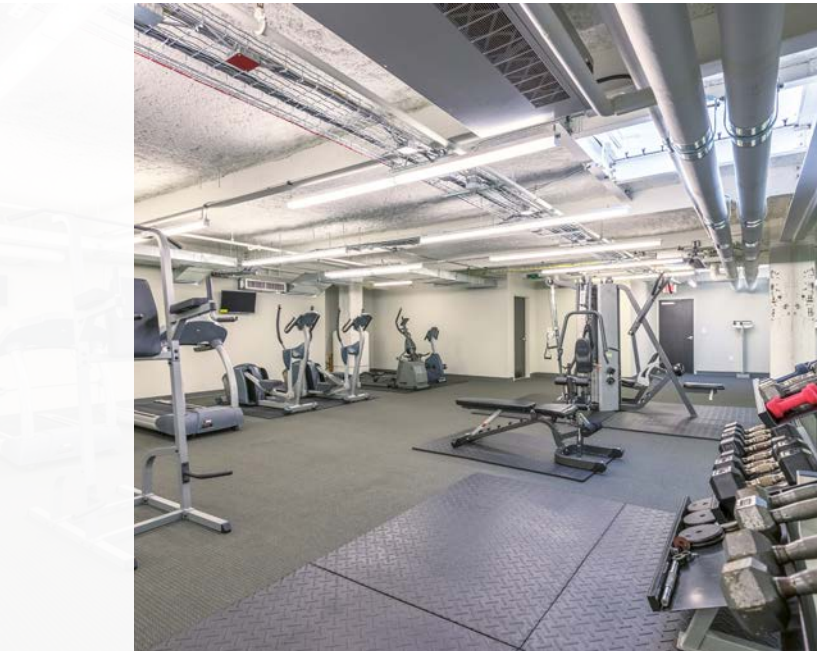
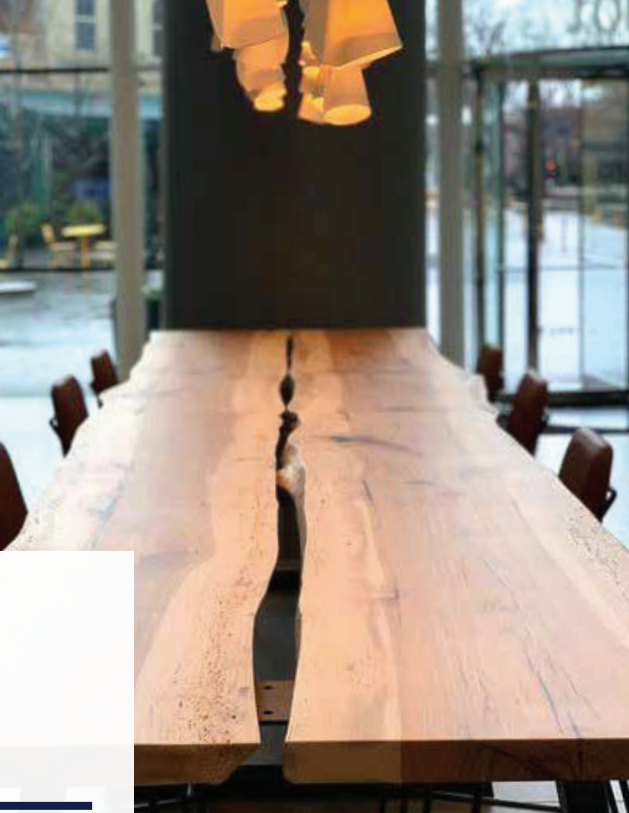
UP TO ±63,824 SF AVAILABLE | FOR LEASE

CBRE



±1,679 - ±63,824 SF AVAILABLE

- Renovations underway with additional improvements planned
- Located on ONE City Plaza
- ±195,907 SF Total Building | 16 Floors
- Amenities:
 - Fitness Center, equipped with locker rooms and showers
 - Direct access to parking garages from third floor
- On-site coffee shop
- Parking available in adjacent city garages
- One of the first buildings in SC to receive a WIRED Certification
- Lease Rate: \$26.50/RSF Full Service
- Ground Floor Lease Rate: Contact Broker



CLASS A DOWNTOWN OFFICE SPACE

Located in the heart of Greenville's award-winning downtown, 101 N Main is pedestrian friendly to over 120 restaurants, 100 retailers, more than six hotels and many downtown attractions such as Falls Park and the Swamp Rabbit Trail.

DINING





EVENT VENUES & ACCOMMODATIONS

- ① Aloft Hotel
- ② Hyatt Regency
- ③ Westin Poinsett
- ④ Courtyard Marriott
- ⑤ Hampton Inn
- ⑥ Embassy Suites
- ⑦ Upcountry Museum
- ⑧ Greenville County Museum of Art
- ⑨ Center Stage
- ⑩ Greenville Little Theatre
- ⑪ Warehouse Theatre
- ⑫ Bon Secours Wellness Arena
- ⑬ Peace Center for the Performing Arts
- ⑭ Flour Field

HEALTH & WELLNESS

- ① Carolina Fitness
- ② Anytime Fitness
- ③ Falls Park on the Reedy River
- ④ Cleveland Park
- ⑤ Kroc Center
- ⑥ Swamp Rabbit Trail

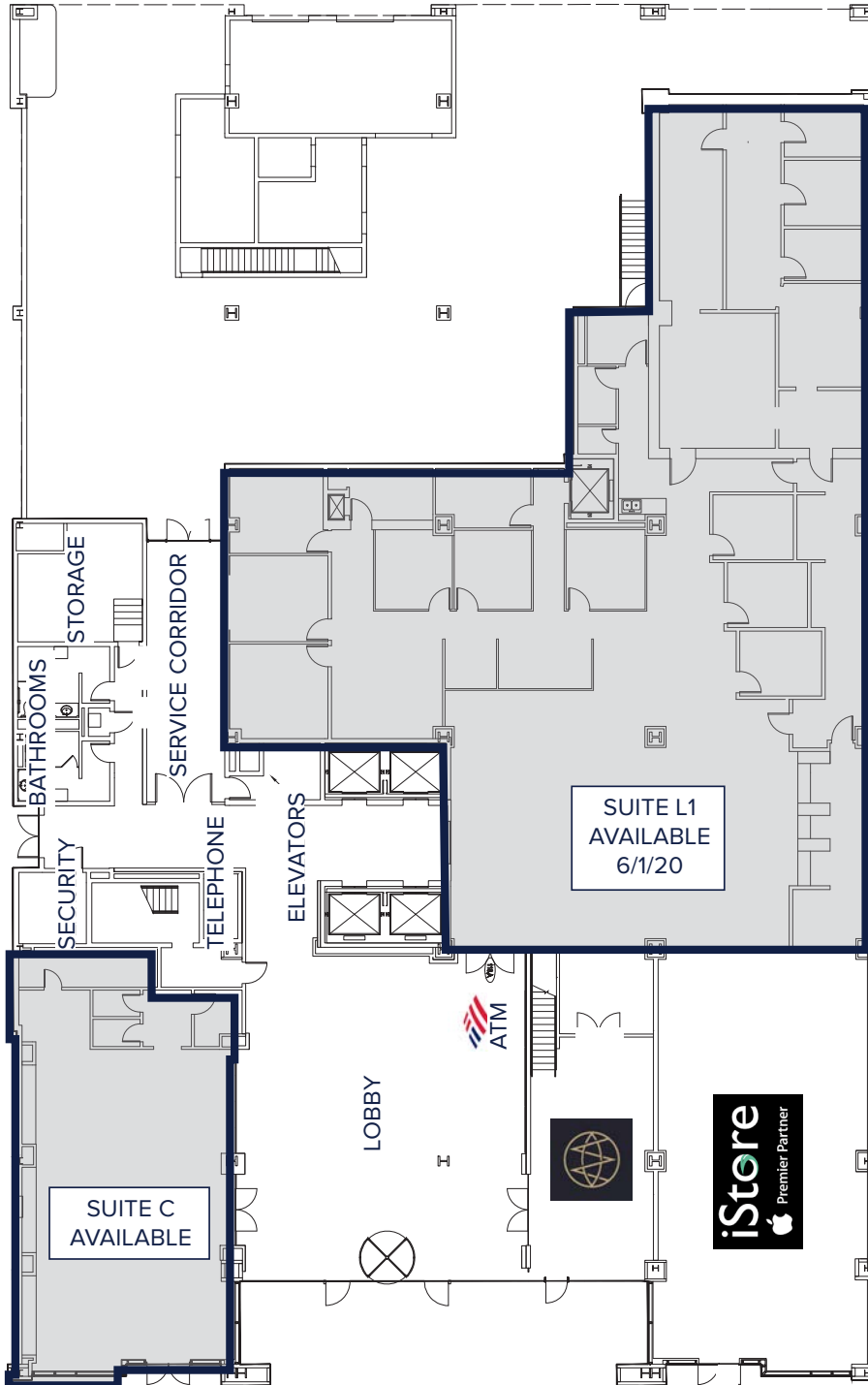
FLOOR PLANS

±1,679 - ±63,824 SF

GROUND FLOOR

Suite C | ±1,995 RSF

Suite L1 | ±7,865 RSF



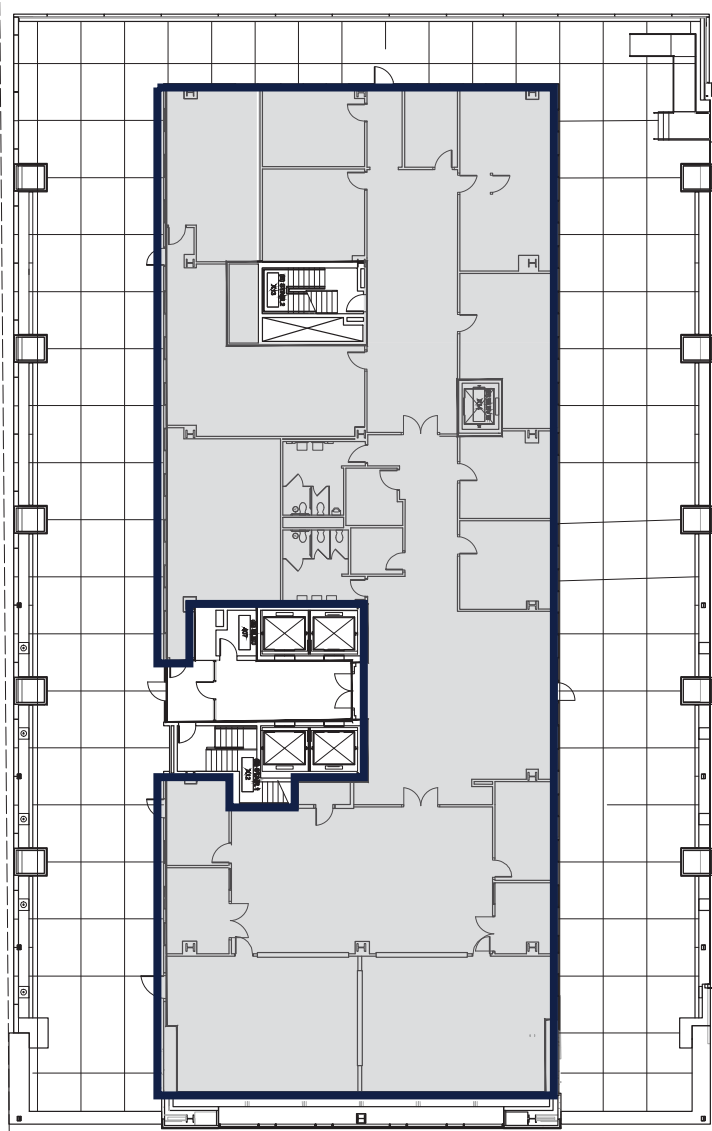
 Available

AVAILABLE FOR LEASE

4TH FLOOR

±12,052 SF AVAILABLE

Suite 400 | ±12,052 RSF



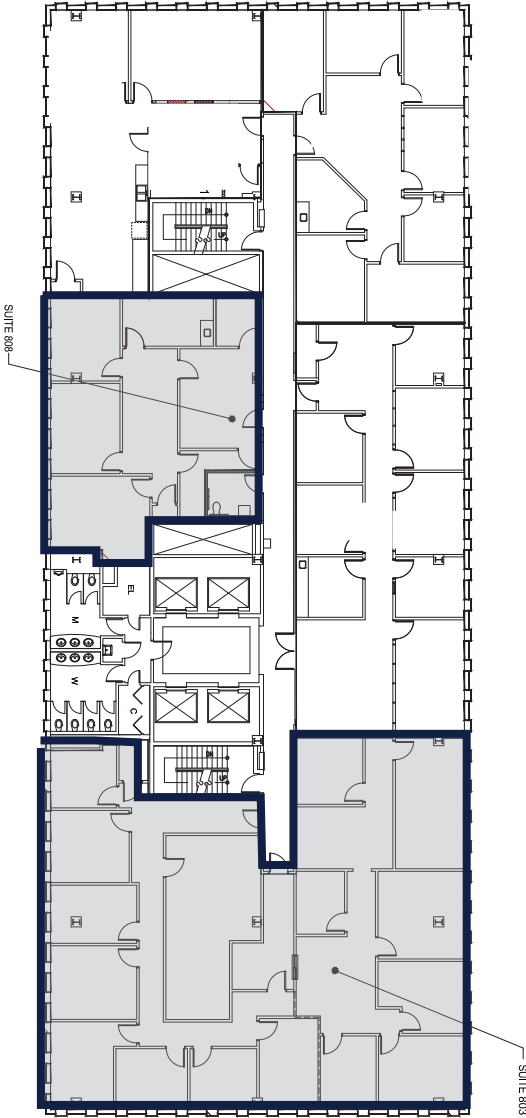
* former IronYard and tech space

8TH FLOOR

±6,676 SF AVAILABLE

Suite 808 | ±1,679 RSF

Suite 803 | ±4,997 RSF



** ADDITIONAL SPACE COMING AVAILABLE LATE 2020

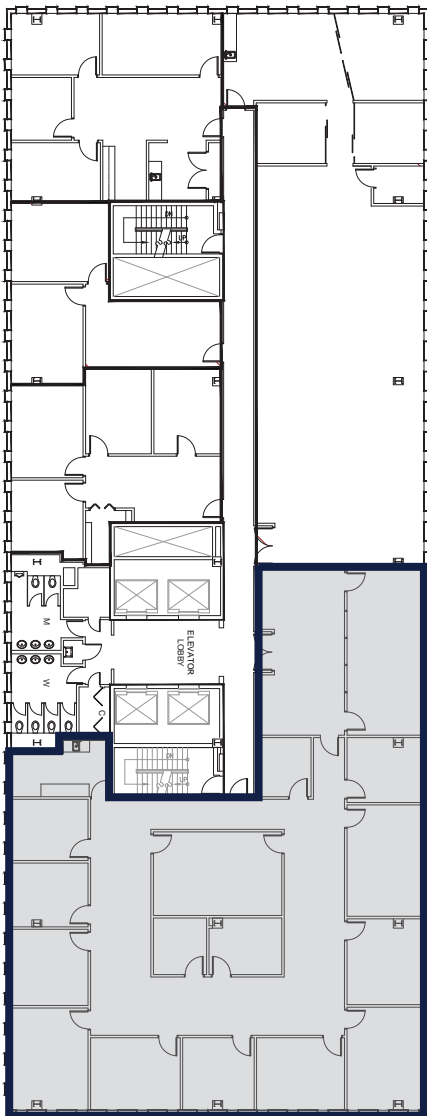
FLOOR PLANS

±1,679 - ±63,824 SF

9TH FLOOR

±6,025 SF AVAILABLE

Suite 900 | ±6,025 RSF

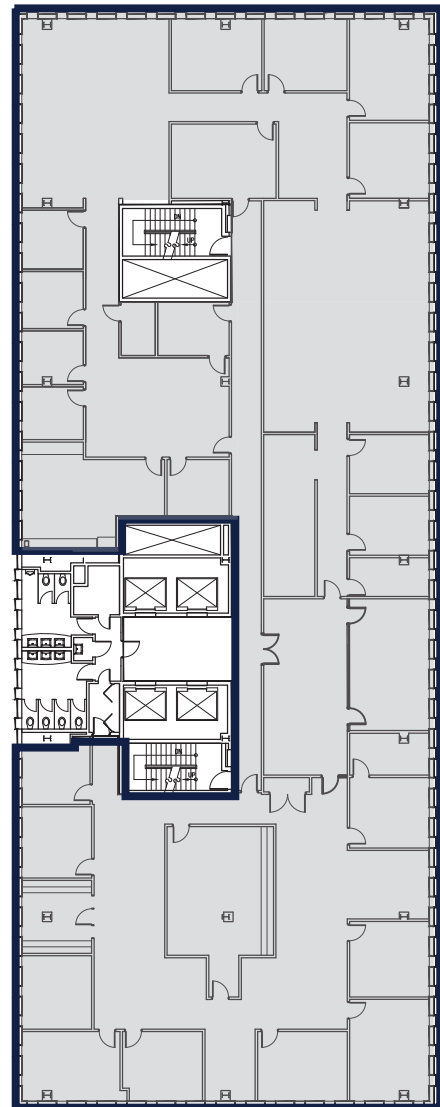


SUITE 900

12TH FLOOR

±12,856 SF AVAILABLE

Suite 1200 | ±12,856 RSF



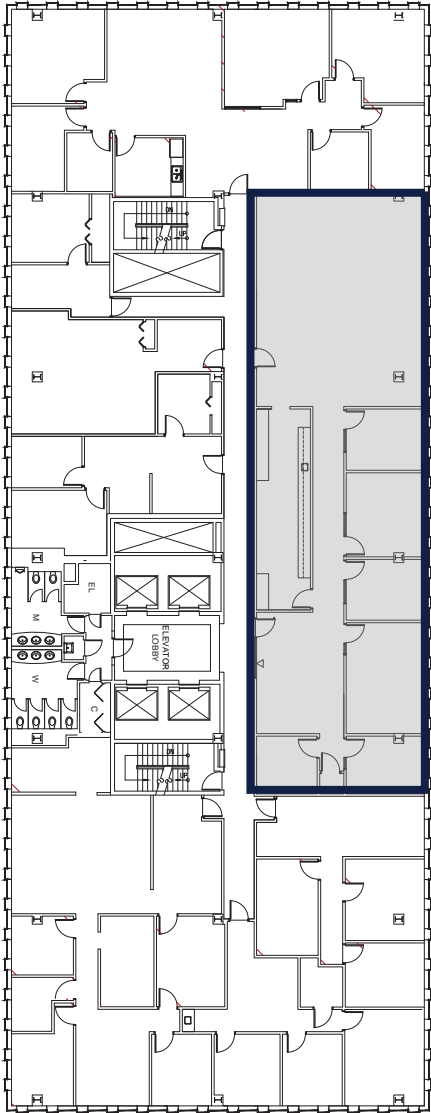
 Available

AVAILABLE FOR LEASE

15TH FLOOR

±3,548 SF AVAILABLE

Suite 1506 | ±3,548 RSF

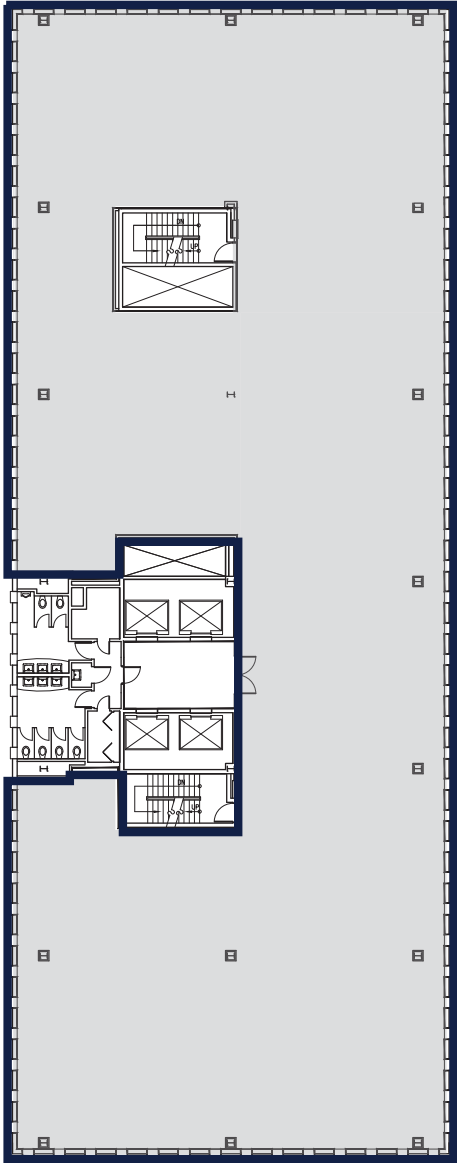


SUITE 1506

16TH FLOOR

±12,807 SF AVAILABLE

Suite 1600 | ±12,807 RSF



** ADDITIONAL SPACE COMING AVAILABLE LATE 2020

SIGNAGE OPPORTUNITY

101 N Main now has the rare ability to offer tenants large contiguous blocks of space and naming/signage rights. The newly renovated lobby, core location and landmark visibility puts 101 N Main at the top of tenants lists when looking for new space..





TENANT AMENITIES

The newly renovated lobby and ground level patio amenity connects the building to the center of Main Street offering a walkable live-work-play atmosphere. In addition to the new lobby, future enhancements planned for the building include 4th floor rooftop common areas

IOI IOI NORTH MAIN



FOR LEASING INQUIRIES:

CHARLES GOUCH, CCIM, SIOR

Senior Vice President
+1 864 527 6035
charles.gouch@cbre.com

BLAINE HART, SIOR

Senior Vice President
+1 864 527 6054
blaine.hart@cbre.com

SHELBY DODSON, LEED AP

First Vice President
+1 864 527 6022
shelby.dodson@cbre.com

© 2020 CBRE, Inc. All rights reserved. This information has been obtained from sources believed reliable, but has not been verified for accuracy or completeness. Any projections, opinions, or estimates are subject to uncertainty. The information may not represent the current or future performance of the property. You and your advisors should conduct a careful, independent investigation of the property and verify all information. Any reliance on this information is solely at your own risk. CBRE and the CBRE logo are service marks of CBRE, Inc. and/or its affiliated or related companies in the United States and other countries. All other marks displayed on this document are the property of their respective owners. Photos herein are the property of their respective owners and use of these images without the express written consent of the owner is prohibited.

PMStudio_March 2019

CBRE