

FOR LEASE

DALLAS POWER & LIGHT

1504 COMMERCE ST, DALLAS, TX 75201



PROPERTY INFO

DP&L is a landmark 19-story, art deco inspired structure that was built in 1931 as the Dallas Power & Light Corporate Headquarter office.

- + DP&L – 158 residential apartments
- + Build to suit opportunity on vacant 5,000 SF of land – up to 10,000 SF on two levels

NOTABLE NEIGHBORS:

- + AT&T National Headquarters
- + Neiman Marcus
- + The Joule Hotel
- + Magnolia Hotel

GROSS LEASABLE AREA

- + ± 15,000 SF

AVAILABLE SPACE

- + ± 4,537 SF; ± 6,286 SF; ± 5,000 – 10,000 SF Build to Suit



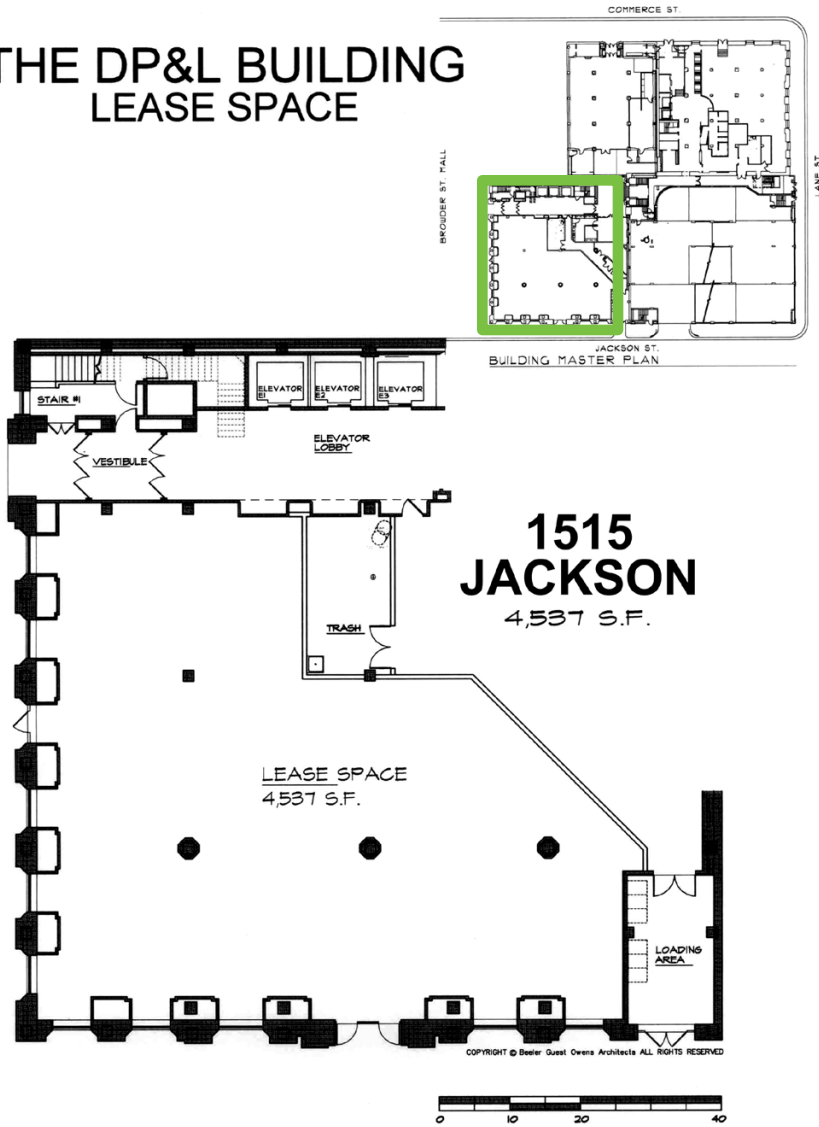
Retail Science from CBRE

www.cbre.com/ucr

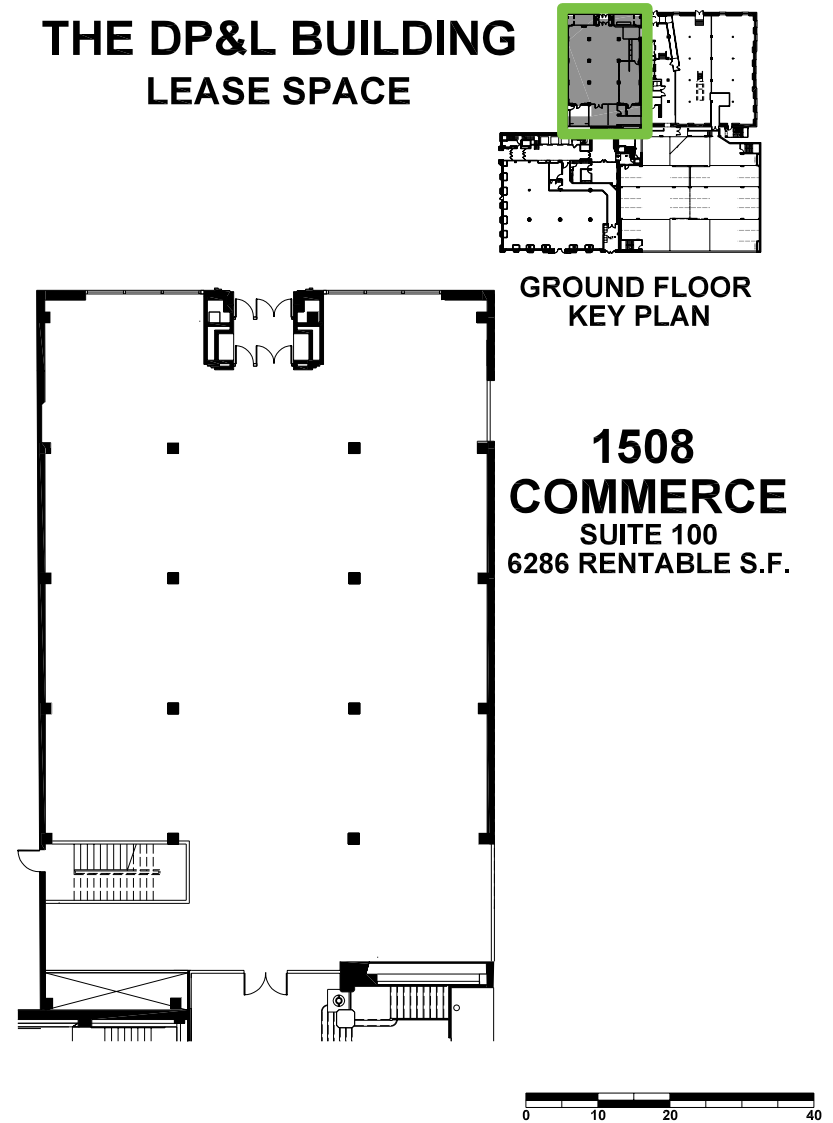
CBRE



THE DP&L BUILDING LEASE SPACE



THE DP&L BUILDING LEASE SPACE



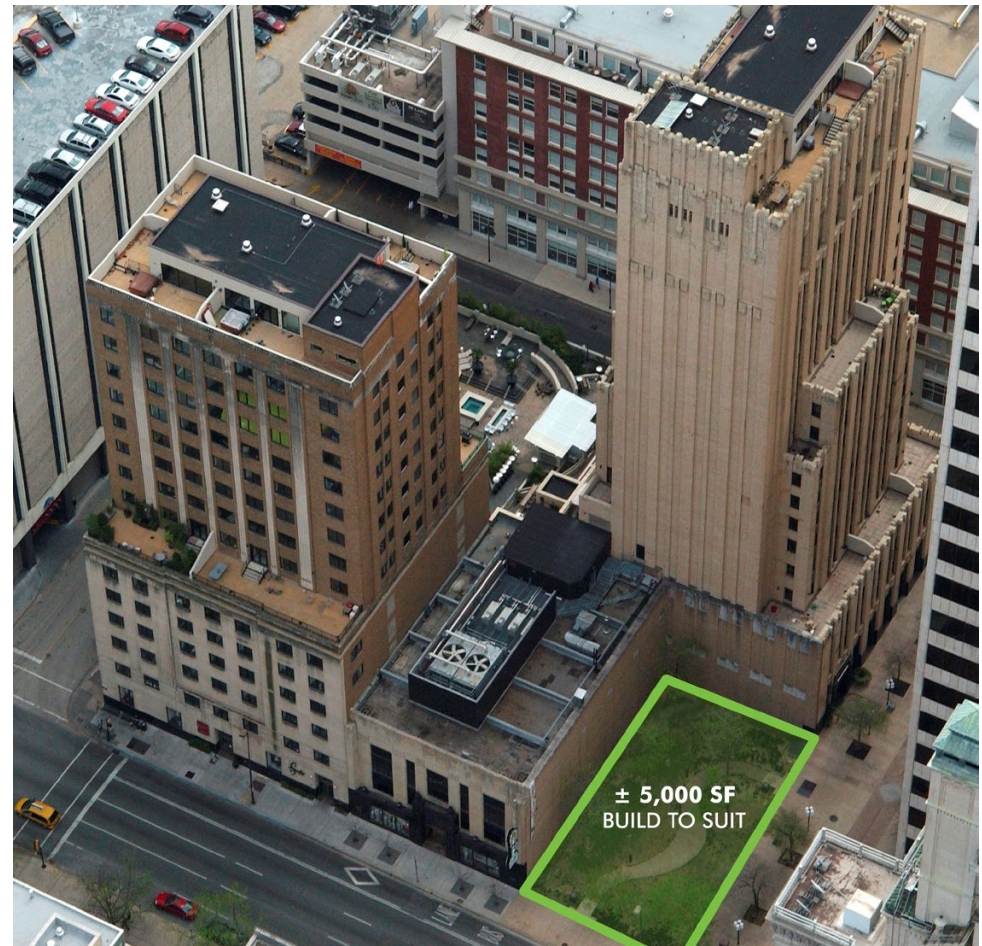
2017 Demographic Summary

	.5 Mile	1 Mile	2 Miles
Total Population	2,030	3,984	8,841
% Pop Growth 2017-2022	2.94%	2.87%	2.25%
Average HH Income	\$91,969	\$99,159	\$96,366
Median Age	32.5	32.6	32.9

Traffic Counts

Commerce St	16,952 vpd
--------------------	------------

Source: CoStar 2014



CONTACT US

Amy MacLaren

Vice President
214 252 1163
amy.maclaren@cbre.com

© 2017 CBRE, Inc. All rights reserved. This information has been obtained from sources believed reliable, but has not been verified for accuracy or completeness. You should conduct a careful, independent investigation of the property and verify all information. Any reliance on this information is solely at your own risk. CBRE and the CBRE logo are service marks of CBRE, Inc. All other marks displayed on this document are the property of their respective owners. Photos herein are the property of their respective owners. Use of these images without the express written consent of the owner is prohibited. FLYER LAST UPDATED 8/9/2017