

Inspirational space in Southampton.

Southampton,
Cumberland Place

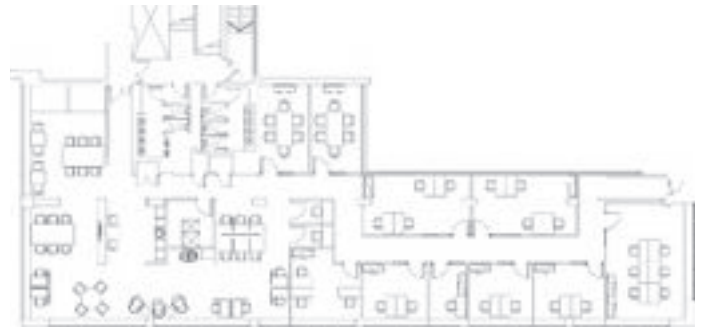
Cumberland House,
Grosvenor Square,
Southampton,
SO15 2BG

16,630 sq ft

Highly flexible terms

This fantastic office space in Southampton's premier business location has been extensively refurbished to a very high standard. The workspace overlooks Isaac Watts Park and is close to the central railway station and several public car parks. Many big names in the service sector are nearby.

Ground Floor Plan



Terms:

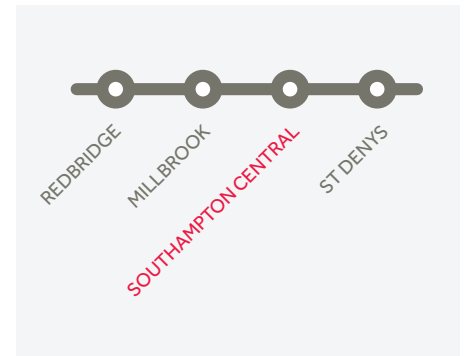
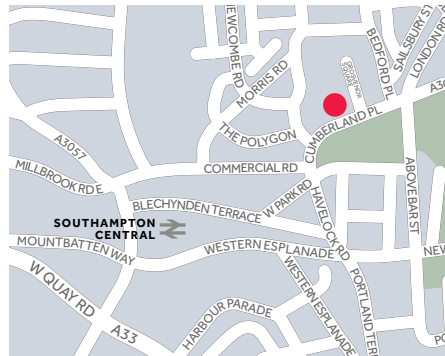
Southampton, Cumberland Place offers a range of flexible options that can be tailored to the occupier's needs. Available immediately, the space can be taken as a whole or in part. Either on a fully or semi serviced basis, with flexible terms.

Key Features:

- Fully furnished and work-ready
- Open plan or cellular layout
- World-class IT and comms infrastructure
- Unbranded office space
- Meeting rooms and kitchen facilities

Location:

Cumberland Place is next to Southampton's main inner ring road and there are several public car parks in the vicinity. It is a 5 minute walk to Southampton Central Station.



← 4.4 miles from Southampton Airport

📶 4 miles from M27

🚉 0.6 miles from Southampton Central Station

Only with Regus.

Exclusive access to a world of benefits.



Drop-in access to our global network of 2000 business lounges



Upsize, downsize or relocate with no penalty



Get connected with free use of 15 million WiFi hotspots worldwide



Free business continuity

0800 756 2503
[regus.co.uk](https://www.regus.co.uk)

Regus™