

For Lease — 2234 South Oliver, Wichita, Kansas



Building Size:

5,440 sq. ft.

Total Available Space:

5,440 sq. ft.

Zoning: Limited Commercial

Parking: 40 spaces

Year Built: 1969

Demographics:

Average HH Income

<u>1 Mile</u>	<u>3 Mile</u>	<u>5 Mile</u>
\$42,496	\$53,305	\$55,231

Population

<u>1 Mile</u>	<u>3 Mile</u>	<u>5 Mile</u>
11,030	85,907	185,754

Traffic Counts:

13,680 vehicles per day at Pawnee and Oliver

Lease Rate:

\$3,500.00 per month, Gross

Comments:

Free-standing building available for lease near Pawnee and Oliver. This former fitness center offers an open layout with ample parking in both front and back.

Contact:

Ben Gartner
Direct: 316-292-3967
bgartner@weigand.com

Bradley Tidemann, SIOR
Direct: 316-292-3947
btidemann@weigand.com

Interior Photos

For Lease — 2234 South Oliver, Wichita, Kansas



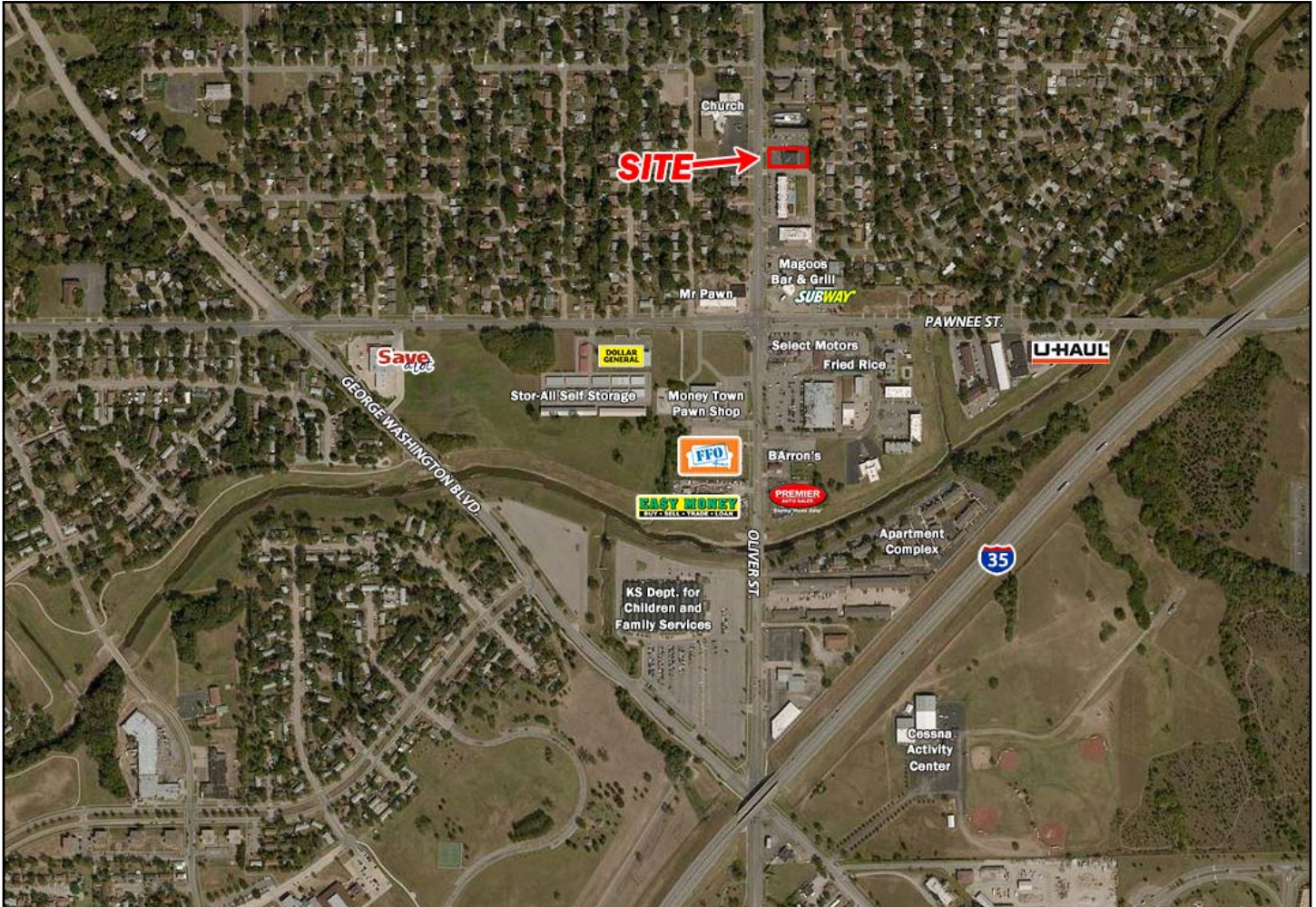
Offered By:
J.P. Weigand & Sons, Inc. ■ 150 N. Market, Wichita, KS 67202
(316) 262-6400 ■ www.weigandcommercial.com



All information furnished regarding property for sales, rent, exchange or financing is from sources deemed reliable but no guarantee is made or responsibility assumed as to its accuracy or completeness and you are advised to make your own analysis and verification. Broker hereby notifies prospective buyer/lessee that (a) Broker will be acting as an agent of seller/lessor with the duty to represent seller/lessor's interest; (b) Broker will not be the agent of buyer/lessee; and (c) Information given to Broker will be disclosed to seller/lessor.

Aerial View

For Lease — 2234 South Oliver, Wichita, Kansas



Offered By:
J.P. Weigand & Sons, Inc. ■ 150 N. Market, Wichita, KS 67202
(316) 262-6400 ■ www.weigandcommercial.com



All information furnished regarding property for sales, rent, exchange or financing is from sources deemed reliable but no guarantee is made or responsibility assumed as to its accuracy or completeness and you are advised to make your own analysis and verification. Broker hereby notifies prospective buyer/lessee that (a) Broker will be acting as an agent of seller/lessor with the duty to represent seller/lessor's interest; (b) Broker will not be the agent of buyer/lessee; and (c) Information given to Broker will be disclosed to seller/lessor.