

3241 GULLEY ROAD
DEARBORN, MICHIGAN

HI-TECH FOR LEASE
11,700 Square Feet Available



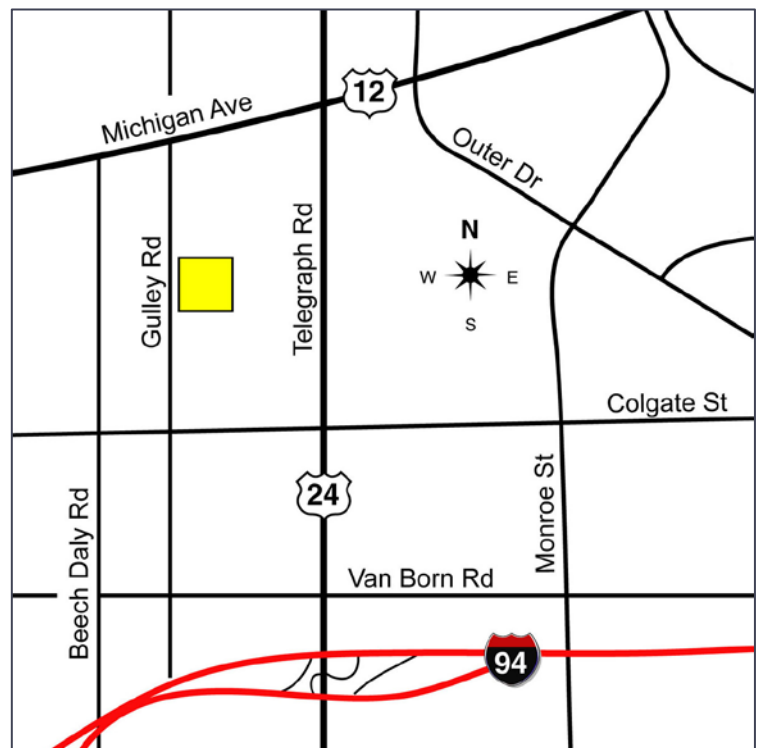
**SIGNATURE
ASSOCIATES**
KNOW SIGNATURE | KNOW RESULTS

GULLEY ROAD INDUSTRIAL PARK



PROPERTY FEATURES

- 11,700 square feet available
- 3,200 square feet of office
- 18' clear height
- (2) 12x14 grade level doors
- Mezzanine office
- Ample parking
- GFA heating
- Roof top air-conditioning
- Single freestanding building
- Lease Rate: \$6.50/sf NNN



For more information, please contact:

JACK TOWNSEND
(248) 948 0115
jtownsend@signatureassociates.com

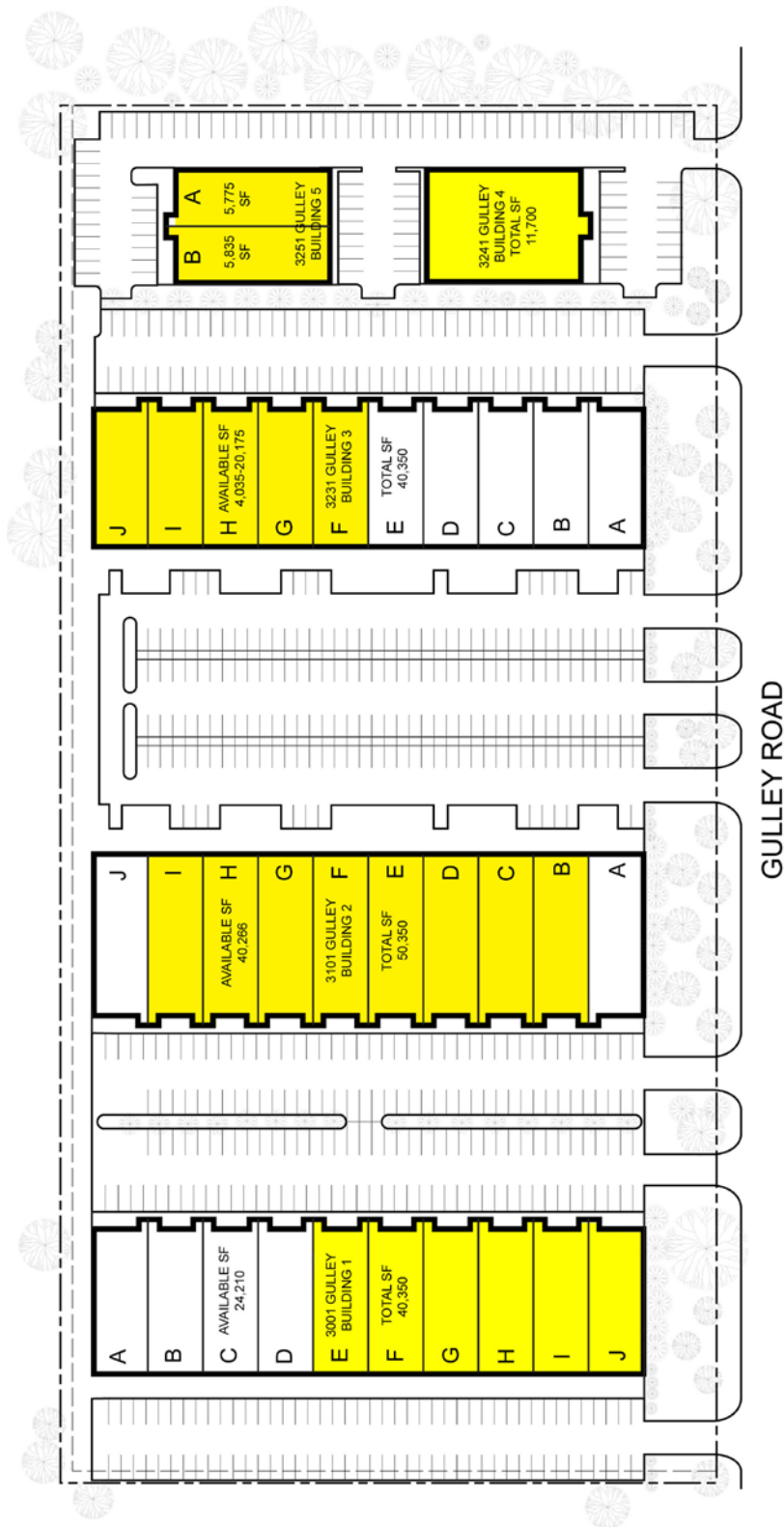
SIGNATURE ASSOCIATES
One Towne Square, Suite 1200
Southfield, MI 48076
www.signatureassociates.com

3241 Gulley Road - Dearborn, Michigan

Hi-Tech For Lease

11,700
Square Feet
AVAILABLE

Site Plan



For more information, please contact:
JACK TOWNSEND
(248) 948 0115
jtownsend@signatureassociates.com

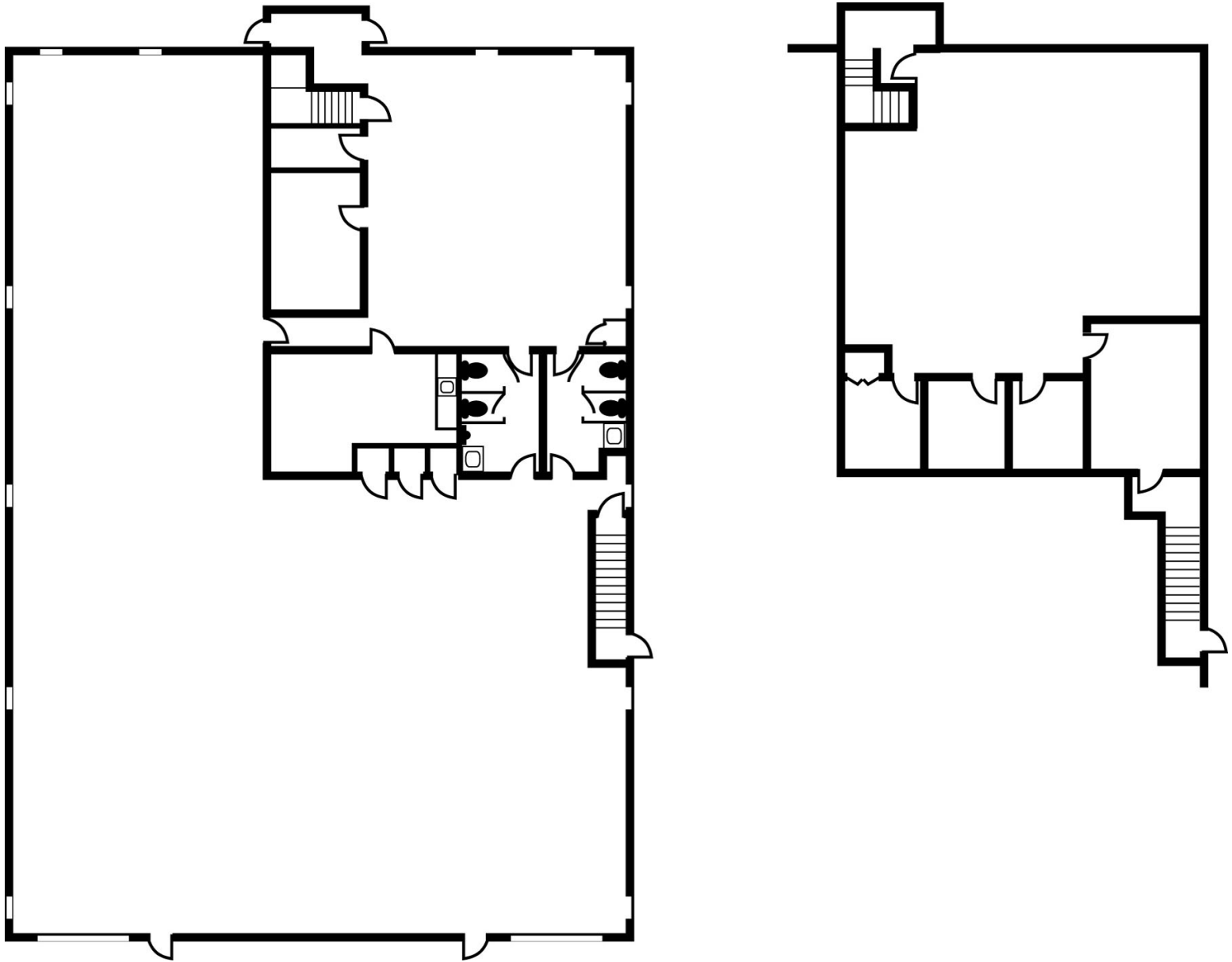
SIGNATURE ASSOCIATES
One Towne Square, Suite 1200
Southfield, MI 48076
www.signatureassociates.com

3241 Gulley Road - Dearborn, Michigan

Hi-Tech For Lease

11,700
Square Feet
AVAILABLE

Floor Plan



For more information, please contact:

JACK TOWNSEND
(248) 948 0115
jtownsend@signatureassociates.com

SIGNATURE ASSOCIATES
One Towne Square, Suite 1200
Southfield, MI 48076
www.signatureassociates.com

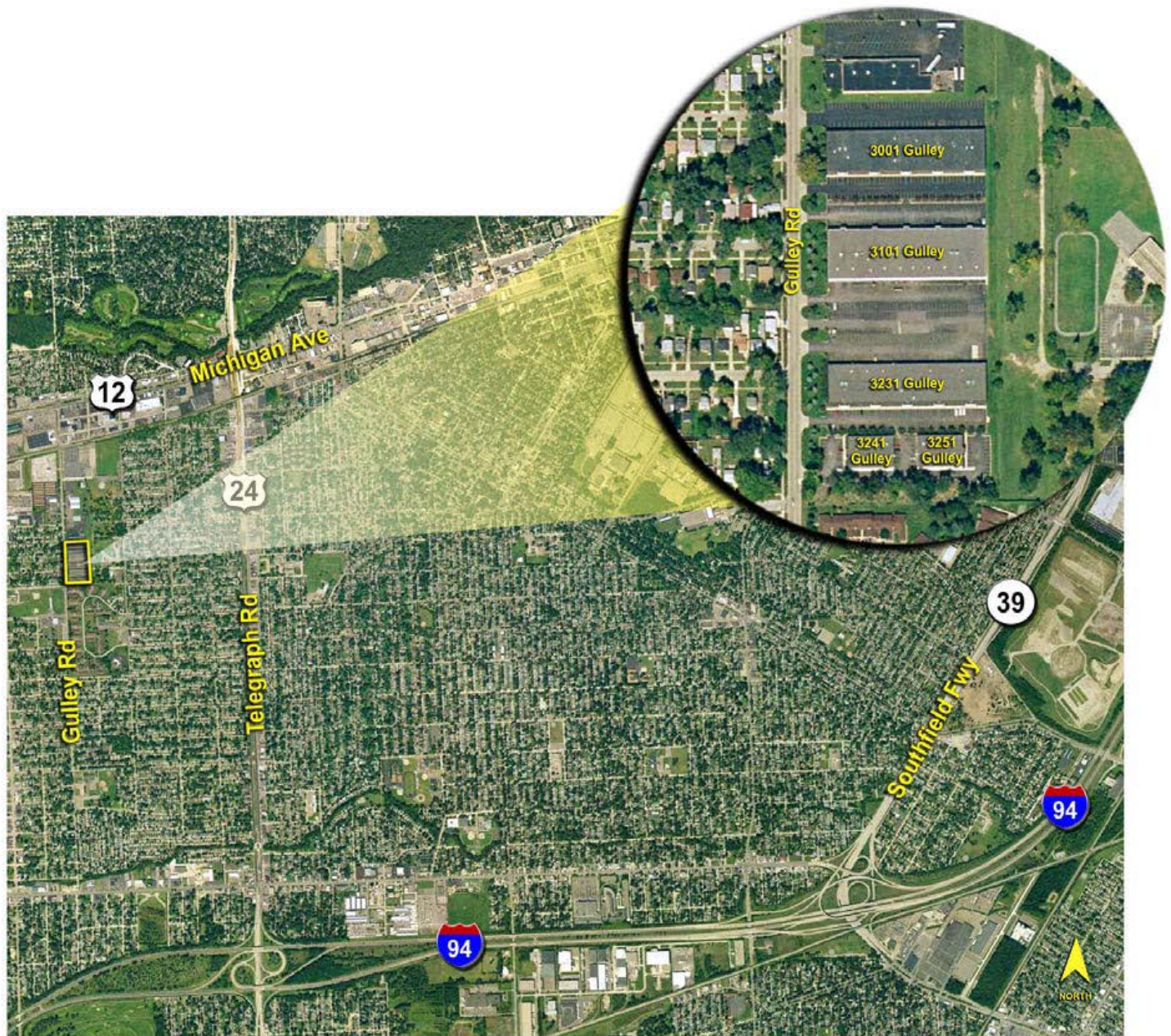
Information is subject to verification and no liability for errors or omissions is assumed. Price is subject to change and listing withdrawal.

3241 Gulley Road - Dearborn, Michigan

Hi-Tech For Lease

11,700
Square Feet
AVAILABLE

Aerial



For more information, please contact:

JACK TOWNSEND
(248) 948 0115
jtownsend@signatureassociates.com

SIGNATURE ASSOCIATES
One Towne Square, Suite 1200
Southfield, MI 48076
www.signatureassociates.com

Information is subject to verification and no liability for errors or omissions is assumed. Price is subject to change and listing withdrawal.