



The Treehouse

737 29th Street, Boulder, CO

Michael-Ryan McCarty

mccarty@gibbonswhite.com
(303) 586-5939

Angela Topel

angela@gibbonswhite.com
(303) 586-5921

Patrick Weeks

patrick@gibbonswhite.com
(303) 586-5935

RentBoulderNow

info@rentboulder.com
(303) 494-6908
www.rentbouldernow.com

www.gibbonswhite.com



Property Info & Gallery



View Map

Unique Central South Boulder Office

Suite 200G 175 sq. ft.

Gross Lease Rate \$785 / Month

*Including Utilities & Shared Wi-Fi

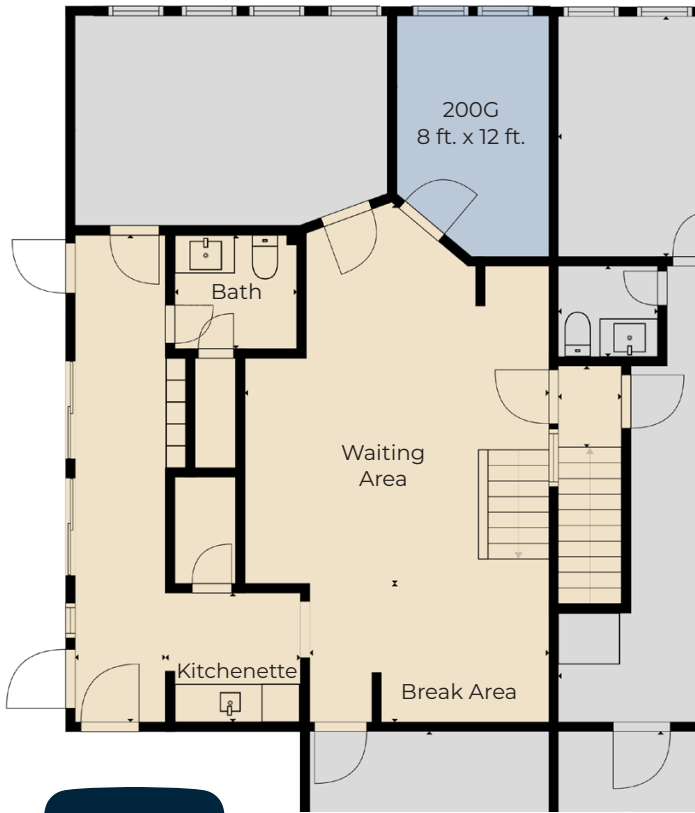
- Single Office Suite with Beautiful North-Facing View Through Floor-to-Ceiling Windows Overlooking Pond, Sparkling Hardwood Floors, Shared Kitchenette & Spacious Lounge & Waiting Area
- Hardwood Floors, Fresh Paint & Remodeled Common-Areas
- Architecturally Unique Building in Park-Like Setting with Natural Pond & Lush Landscaping Designed by Renowned Architect Hobie Wagner
- Free On-Site Parking & Conveniently Located at Baseline & US 36 / 28th St

The information included has been obtained from sources believed reliable. While we do not doubt the accuracy of the information, it has not been verified and no guarantee, warranty, or representation is being made.

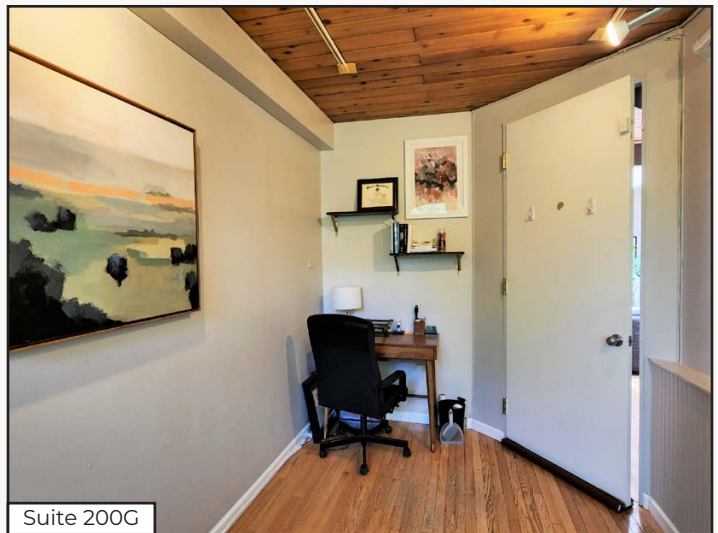


2305 Canyon Blvd, Suite 200, Boulder, CO 80302 - (303) 442-1040

737 29th St
2nd Floor



Suite 200G



Suite 200G



Lounge & Waiting Area



Kitchenette

The information included has been obtained from sources believed reliable. While we do not doubt the accuracy of the information, it has not been verified and no guarantee, warranty, or representation is being made.