



For Lease



**1010 HIGH HOUSE ROAD
CARY, NC 27513**

PRESTON EXECUTIVE CENTER I

RBA: 20,414 SF

Zoned: OIP

Parking: 4.00:1000

Year built: 1996

Availabilities: First Floor - 2,025 SF suite
Third Floor - 5,587 SF suite*
**full floor with private restrooms*

Asking Rental Rate: \$18.00 PSF, NNN
Estimated TICAM: \$4.25 PSF



PREMIER PRESTON CORNERS LOCATION IN DESIRABLE CARY SUBMARKET

- » Primary intersection of the landmark 2,000-acre Preston mixed-use development
- » Attractive Class-B three-story brick building with elevator within prestigious Preston Executive Center
- » Highly amenitized with nearby Prestonwood Country Club, Park West Village, Bond Park, Stone Creek Village, along with other restaurants, banks, and personal services
- » Move-in ready for general professional use
- » Five building tenants include medical and dentistry uses
- » Opportunity for purchase



PRESTON CORNERS CLOCK TOWER



1010 HIGH HOUSE ROAD

CARY, NC 27513



DEMOGRAPHICS

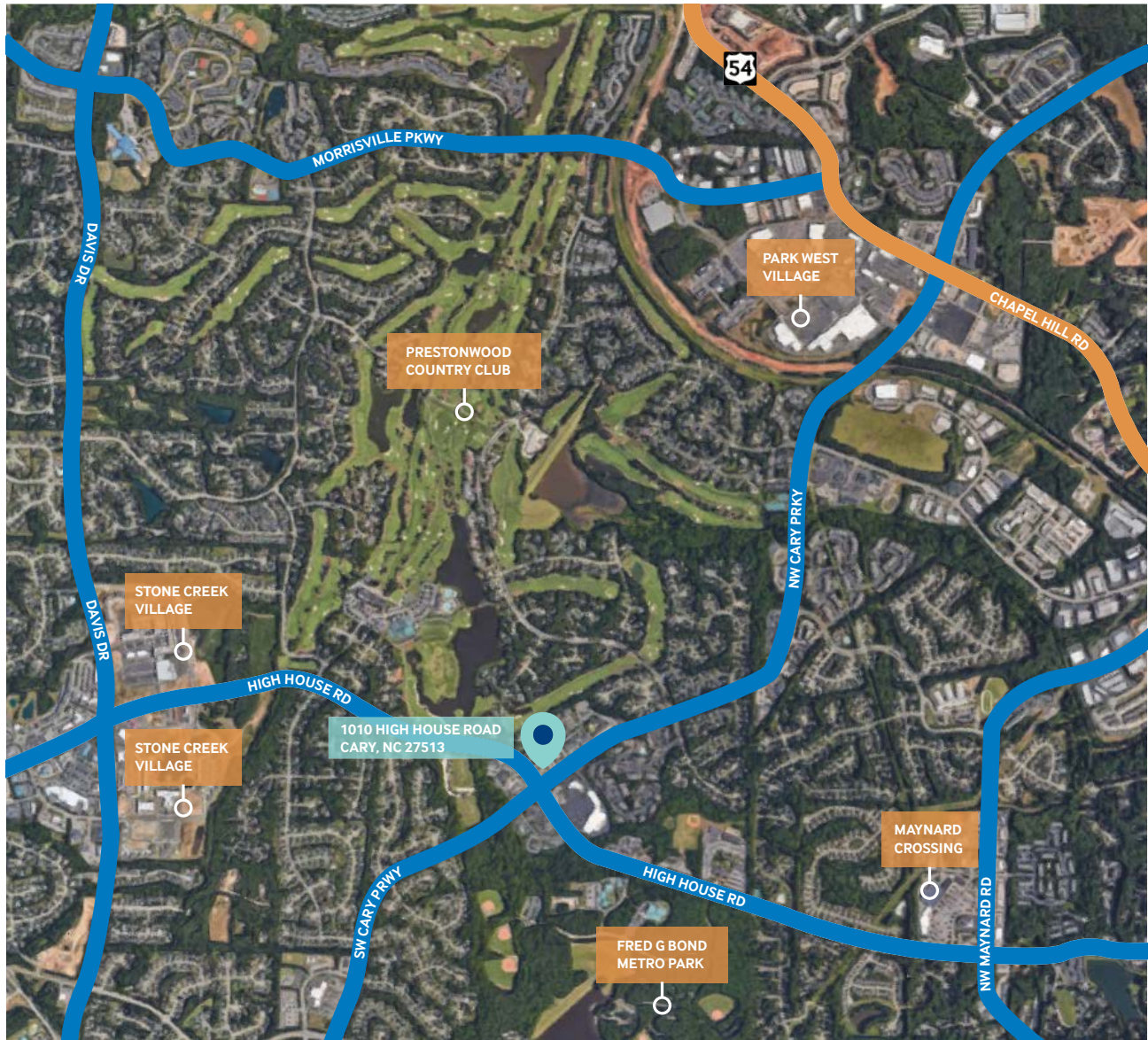
	DISTANCE	POPULATION	2018 AVG HOUSEHOLD INCOME	HOUSEHOLDS	DAYTIME POPULATION
1M		10,137	\$156,787	3,673	3,900
3M		97,191	\$124,809	37,361	29,797
5M		192,164	\$122,504	73,752	103,609



1010 HIGH HOUSE ROAD

CARY, NC 27513

↑ 1.5 MILES TO MORRISVILLE ↑



→
1.9 MILES
TO CARY

4.1 MILES TO


10.9 MILES
TO RALEIGH
→

↓ 5 MILES TO HWY  ↓

TRINITY
PARTNERS
trinity-partners.com

Mark Alviano
919.674.3681
malviano@trinity-partners.com

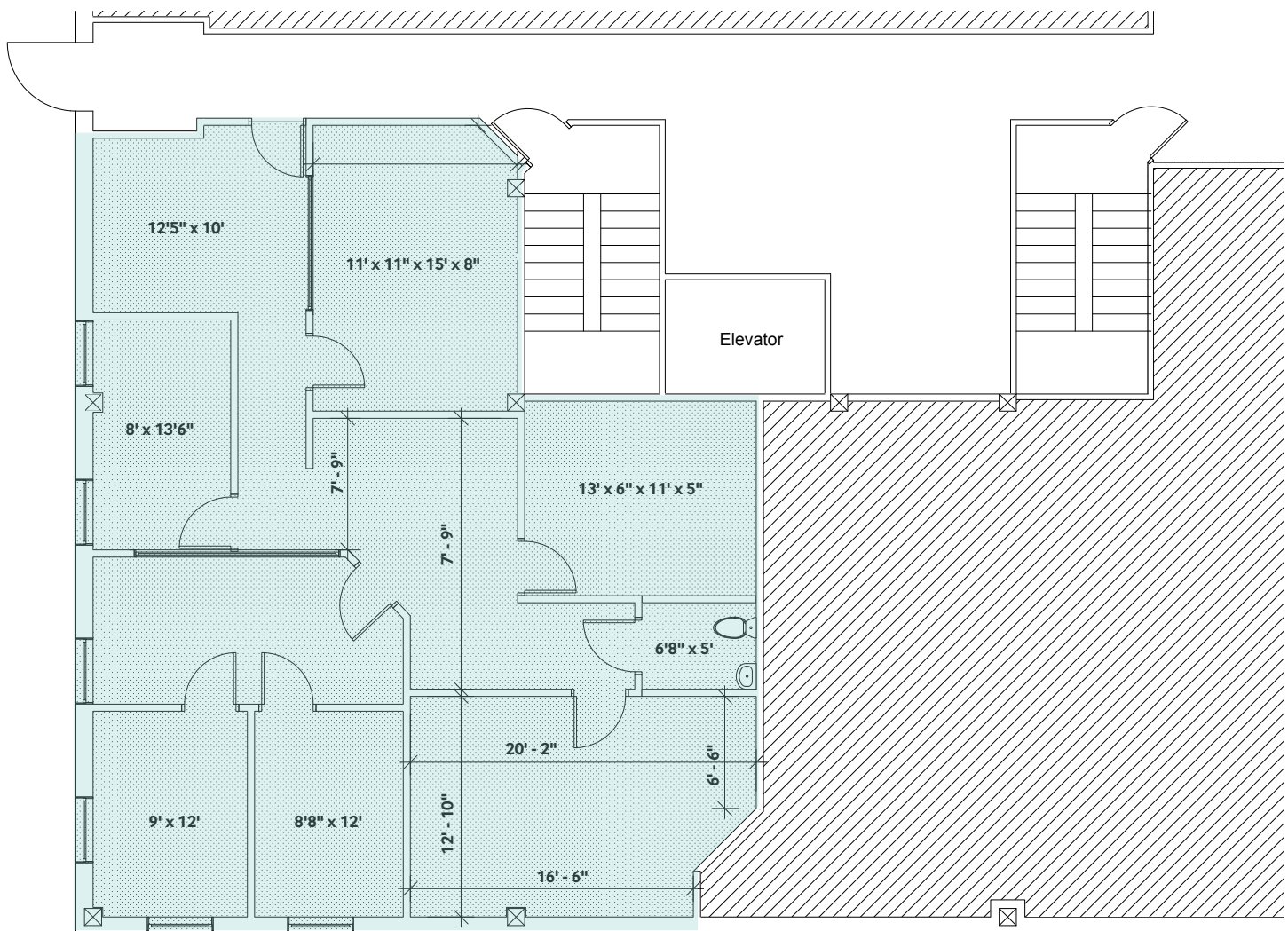
Mike Eberle
919.674.3689
meberle@trinity-partners.com



1010 HIGH HOUSE ROAD

CARY, NC 27513

FIRST FLOOR - 2,025 SF SUITE





1010 HIGH HOUSE ROAD

CARY, NC 27513

THIRD FLOOR - 5,587 SF SUITE (FULL FLOOR WITH PRIVATE RESTROOM)

