

Full Building Plug & Play Opportunity

Classic Brick & Beam

333 Summer Street
Boston, Massachusetts

Up to 117,801 SF Available – Term Through 6/30/28



Opportunity

CBRE is pleased to announce the availability of **117,801 SF** of classic brick & beam office space at 333 Summer Street. This plug and play space offers an internal staircase, a mix of open seating, meeting rooms and collaboration space in a move in ready solution. 333 Summer Street sits in the heart of Boston's Seaport District within walking distance to South Station and an abundance of nearby amenities.

Availability

- + **Sub-Basement:** 15,127 SF
- + **2nd Floor:** 15,339 SF
- + **Café:** 14,680 SF
- + **3rd Floor:** 15,339 SF
- + **Mezzanine Floor:** 11,198 SF
- + **4th Floor:** 15,339 SF
- + **1st Floor:** 15,440 SF
- + **5th Floor:** 15,339 SF

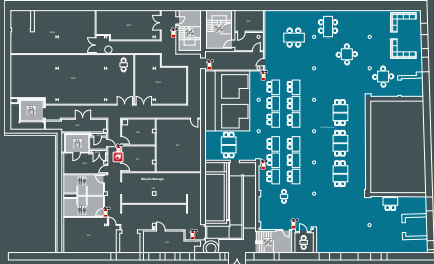
Amenities

- + Fitness Center
- + Bike Storage
- + Basketball Court
- + Café
- + Showers
- + Outdoor Area
- + Locker Rooms

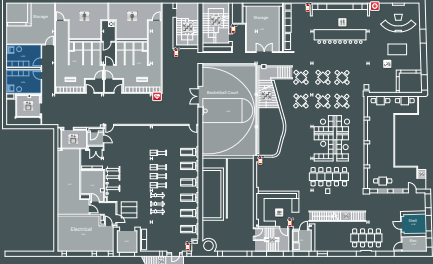


Site Plans

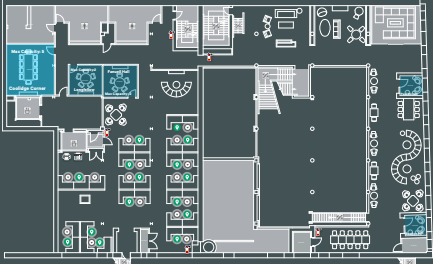
Sub-Basement
14,250 SF



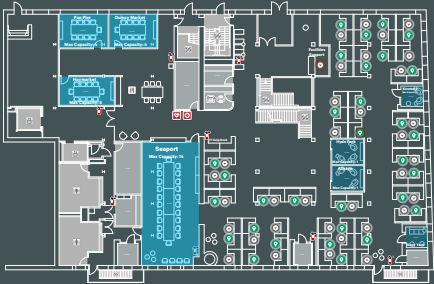
Café
14,680 SF



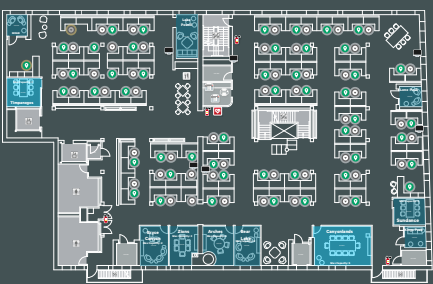
Mezzanine Floor
11,198 SF



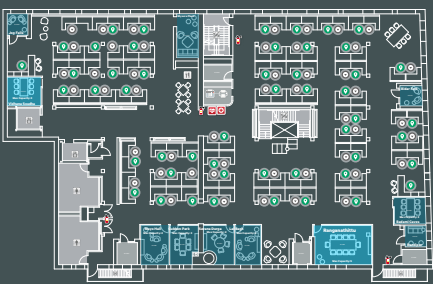
1st Floor
15,440 SF



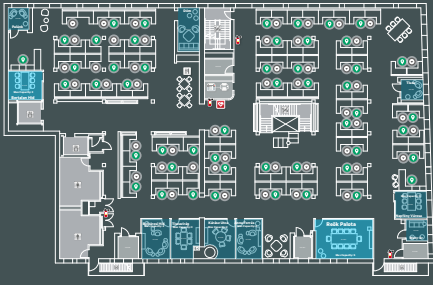
2nd Floor
15,339 SF



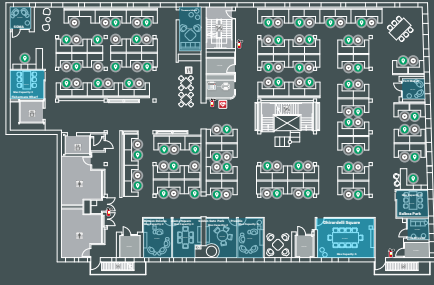
3rd Floor
15,339 SF



4th Floor
15,339 SF



5th Floor
15,339 SF





Contact Us

Kevin Kennedy
Senior Vice President
+1 617 912 7058
kevin.kennedy@cbre.com

Tim Lahey
Senior Vice President
+1 617 933 0158
tim.lahey@cbre.com

Suzanne Brown
Vice President
+1 617 912 6931
suzanne.brown@cbre.com

© 2022 CBRE, Inc. All rights reserved. This information has been obtained from sources believed reliable, but has not been verified for accuracy or completeness. You should conduct a careful, independent investigation of the property and verify all information. Any reliance on this information is solely at your own risk. CBRE and the CBRE logo are service marks of CBRE, Inc. All other marks displayed on this document are the property of their respective owners, and the use of such logos does not imply any affiliation with or endorsement of CBRE. Photos herein are the property of their respective owners. Use of these images without the express written consent of the owner is prohibited.