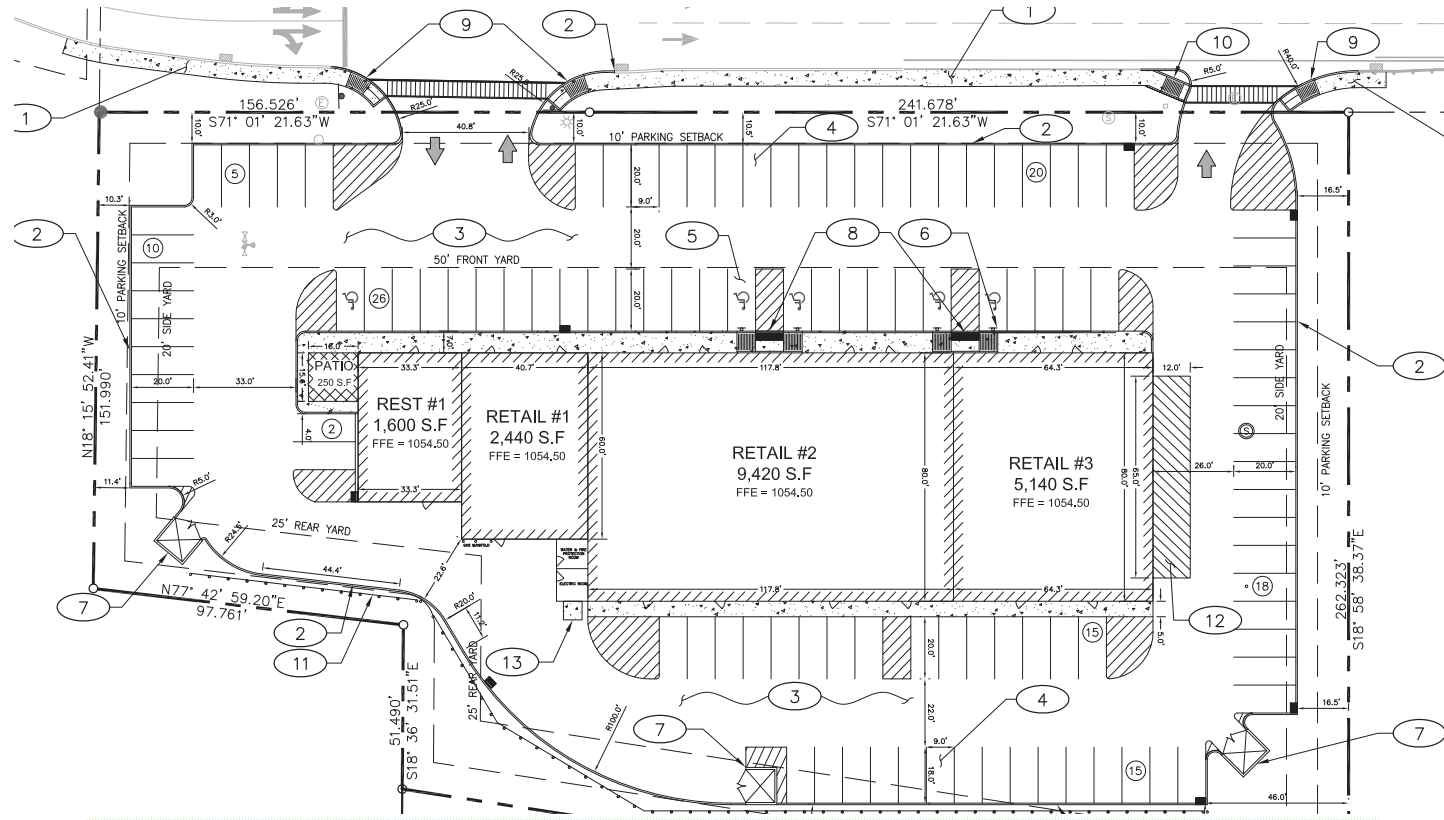


NEW RETAIL DEVELOPMENT COMING SOON

Stone Quarry

CENTER TOWNSHIP | BEAVER COUNTY, PA

RETAIL



2017 Estimated Demographics

	Three miles	Five miles	Ten miles
Population	31,278	63,522	171,803
Households	13,446	27,065	71,821
Average Household Income	\$68,987	\$68,274	\$72,864
Daytime Population	38,905	63,509	147,621

CONTACT US

Herky Pollock

Executive Vice President
+1 412 394 9840
herky.pollock@cbre.com

© 2018 CBRE, Inc. This information has been obtained from sources believed reliable. We have not verified it and make no guarantee, warranty or representation about it. Any projections, opinions, assumptions or estimates used are for example only and do not represent the current or future performance of the property. You and your advisors should conduct a careful, independent investigation of the property to determine to your satisfaction the suitability of the property for your needs. Photos herein are the property of their respective owners and use of these images without the express written consent of the owner is prohibited. CBRE and the CBRE logo are service marks of CBRE, Inc. and/or its affiliated or related companies in the United States and other countries. All other marks displayed on this document are the property of their respective owners.

www.cbre.us/pittsburgh



NEW RETAIL DEVELOPMENT COMING SOON

Stone Quarry

CENTER TOWNSHIP | BEAVER COUNTY, PA

RETAIL

PRICE REDUCED



SAMPLE IMAGE. NOT ACTUAL CENTER



PROPERTY INFO

- + 18,600 sq. ft. retail development adjacent to successful Beaver Valley Mall, the only enclosed regional mall in the three county area (20 mile radius)
- + In the shadow of Kohl's, Target, Ross Dress for Less and Marshalls
- + Other tenants include Walmart Supercenter, McKinney's Furniture, Staples, Lowe's, PetSmart, Cinemark and others
- + Area drivers include Penn State Beaver Campus and local marcellus industry
- + Less than a mile from the site, construction of the ethane cracker facility will create 6,000 construction and 18,000 indirect jobs. Once completed, there will be an estimated 600 permanent jobs and 8,000 indirect jobs

www.cbre.us/pittsburgh



NEW RETAIL DEVELOPMENT COMING SOON

Stone Quarry

CENTER TOWNSHIP | BEAVER COUNTY, PA

RETAIL

