

# GRIFFITH BUSINESS PARK

4800 SW Griffith Drive | Beaverton, OR 97005

## FOR LEASE

ONE SUITE LEFT!



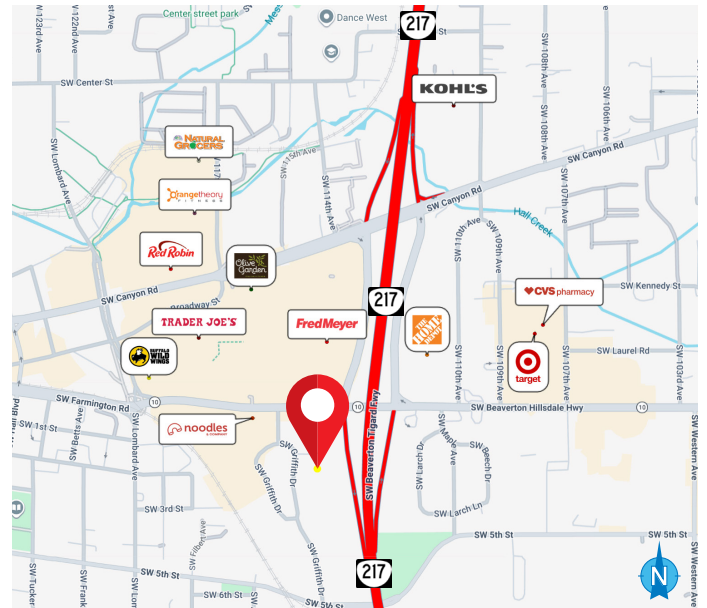
## OFFICE SPACE AVAILABLE FOR LEASE

### DETAILS

- Suite 250: ± 2,604 SF - Move-in ready
- Lease rate: \$22.50 PSF, Full Service

### FEATURES

- Updated common areas, HVAC, new lighting - updated restrooms
- Freshly sealed parking lot
- Conference room, break room
- Elevator served
- Ample on-site parking - with new landscaping
- Along TriMet bus lines and easy access to TriMet MAX line, Hwy 10, and Hwy 217
- Just south of Beaverton Town Square
- Quiet business park with local ownership



06.15.2026

For more information or a property tour, please contact:

**DUANE LINK**

503.225.8465

Duanel@norris-stevens.com



*Information contained herein has been obtained from others and considered to be reliable; however, a prospective purchaser or lessee is expected to verify all information to their own satisfaction.*

## Norris & Stevens

INVESTMENT REAL ESTATE SERVICES

900 SW 5th Avenue • 17th Floor • Portland, OR 97204  
503.223.3171 • norris-stevens.com

# GRIFFITH BUSINESS PARK

4800 SW Griffith Drive | Beaverton, OR 97005

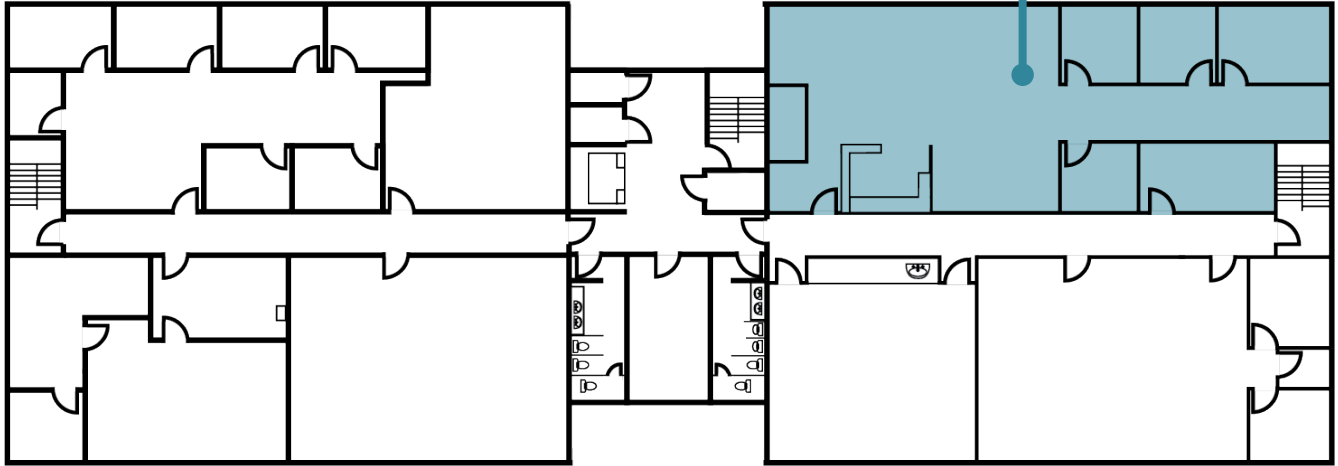
# FOR LEASE

## FLOOR PLANS

### SECOND FLOOR

HIGHWAY 217

**SUITE 250**  
± 2,604 SF  
Move-In Ready



SW GRIFFITH DRIVE



For more information or a property tour, please contact:

**DUANE LINK**

503.225.8465

Duanel@norris-stevens.com



Information contained herein has been obtained from others and considered to be reliable; however, a prospective purchaser or lessee is expected to verify all information to their own satisfaction.

## Norris & Stevens

INVESTMENT REAL ESTATE SERVICES

900 SW 5th Avenue • 17th Floor • Portland, OR 97204

503.223.3171 • norris-stevens.com