

FOR SALE

THE VAULTS

13005-93 Ave SW, Edmonton, AB



Premium Lifestyle Storage Condos
Units Starting at 1,680 sq ft ±

Immediate Possession!

TYLER WEIMAN, SIOR
Partner, Associate
C 780.995.0028
tyler@royalparkrealty.com

JOANNA LEWIS
Associate
T 780.423.7580
joanna@royalparkrealty.com



**ROYAL PARK
REALTY™**

T 780.448.0800 F 780.426.3007
#201, 9038 51 Avenue NW Edmonton, AB T6E 5X4

royalparkrealty.com



For Sale | The Vaults, 13005-93 Ave SW, Edmonton, AB



More than storage, The VAULTS is a one-of-a-kind ownership opportunity designed for those who demand security, privacy, and distinction. Each unit is a titled condominium, offering long-term value and the freedom to create a space that's truly your own.

Owners are able to transform their unit into a personalized showcase, whether for luxury vehicles, recreational toys, private office or lounge space, or unique lifestyle uses. Beyond convenience, The VAULTS offers a community of like-minded individuals who share a passion for quality, investment, and elevated living.

Property Details & Financials

MUNICIPAL ADDRESS	13005-93 Ave SW, Edmonton, AB
LEGAL DESCRIPTION	Condo Plan: 2520396; Units: 1, 2, 5, 6, 9, 13 & 20
ZONING	ILES (Light Industrial Edmonton South)
UNITS AVAILABLE	Ranging from 1,680 to 3,710 sq ft ±
SALE PRICE	Starting at \$449,900.00 (see page 5)
CONDO FEES	\$1.32/sq ft (2025)
PROPERTY TAXES	TBV



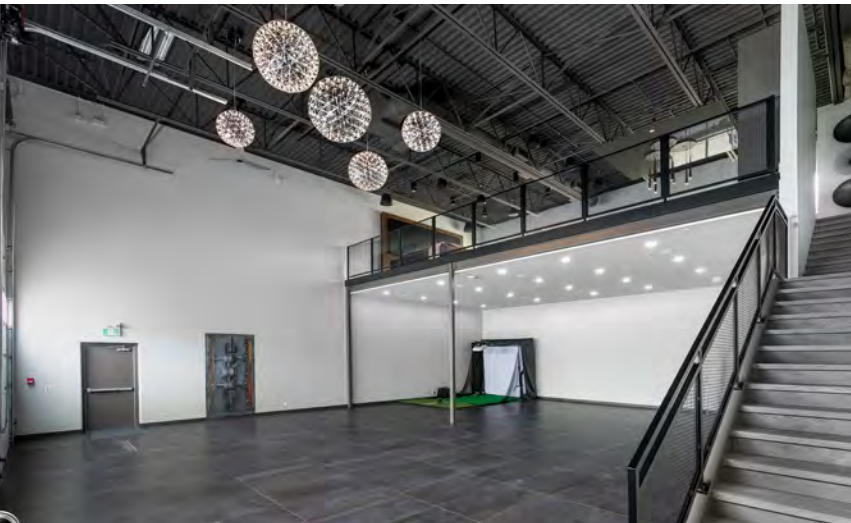
**ROYAL PARK
REALTY™**

T 780.448.0800 F 780.426.3007
#201, 9038 51 Avenue NW Edmonton, AB T6E 5X4

royalparkrealty.com



Photos | The Vaults, 13005-93 Ave SW, Edmonton, AB



Premium Features in All Units

- 27' ceilings
- Mezzanine with 13.5' clearance
- 16' w x 14' h powered overhead door
- Polished concrete floor
- Unit heater
- 3-piece bathroom
- Sprinkler fire suppression
- Individually metered (electricity & gas)
- In-unit hose bib
- Air detection system

CLICK FOR VIRTUAL TOUR 

SMALL UNIT LAYOUT **LARGE UNIT LAYOUT**



ROYAL PARK REALTY™

T 780.448.0800 F 780.426.3007
#201, 9038 51 Avenue NW Edmonton, AB T6E 5X4

royalparkrealty.com



For Sale | The Vaults, 13005-93 Ave SW, Edmonton, AB



Designed for Collectible Cars, Boats & RVs

- Climate controlled to preserve valuable vehicles
- Ideal for car enthusiasts, RVs and boats
- Spacious interiors, mezzanine flexibility, customization options
- Condo/strata property ownership, meaning long-term investment value and design freedom



ROYAL PARK REALTY™

T 780.448.0800 F 780.426.3007
#201, 9038 51 Avenue NW Edmonton, AB T6E 5X4

royalparkrealty.com



Site Plan | The Vaults, 13005-93 Ave SW, Edmonton, AB

AVAILABILITY		
UNIT #	SIZE (SF)	SALE PRICE
1	3,710	\$869,900
2	1,680	\$449,900
5	1,708	\$457,900
6	1,708	\$457,900
9	2,618	\$699,900
13	3,158	\$839,900
20	3,289	\$889,900

■ AVAILABLE
■ SOLD

CLICK FOR FLOOR PLANS



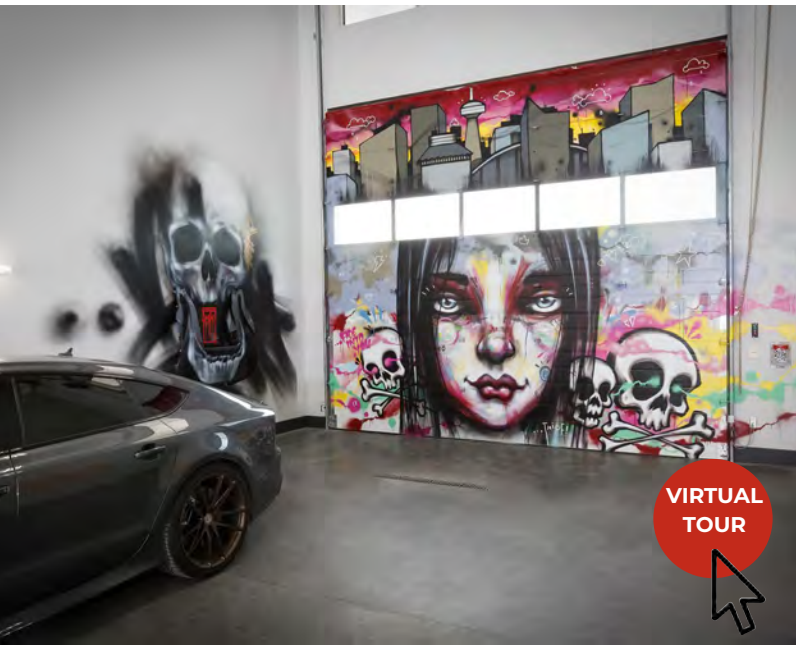
ROYAL PARK REALTY™

T 780.448.0800 F 780.426.3007
 #201, 9038 51 Avenue NW Edmonton, AB T6E 5X4

royalparkrealty.com

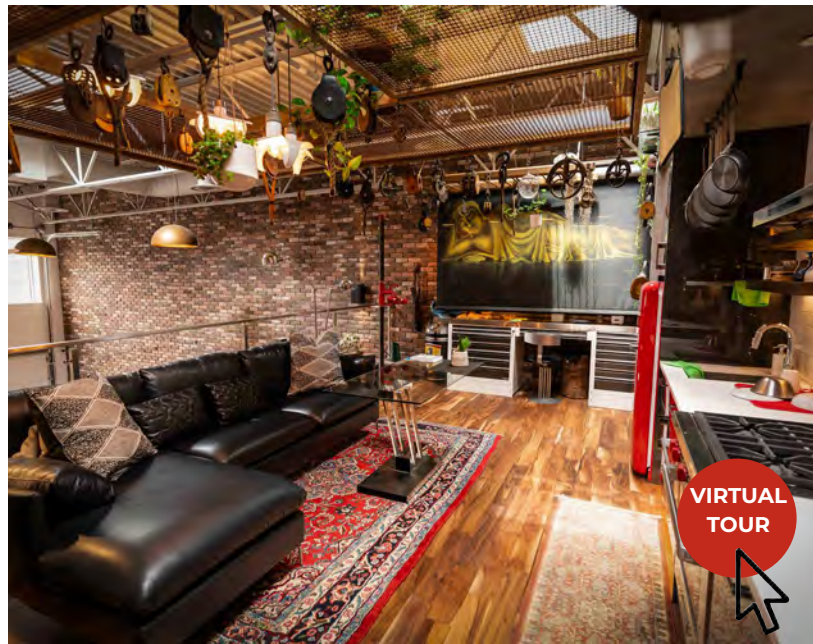


For Sale | The Vaults, 13005-93 Ave SW, Edmonton, AB



Superior Security & Accessibility

- Concrete perimeter walls
- 24/7 monitoring, personalized fob access with fully enclosed main door entry
- Fire suppression, CO detectors
- Interior drive aisles over 50 ft wide for easy maneuvering

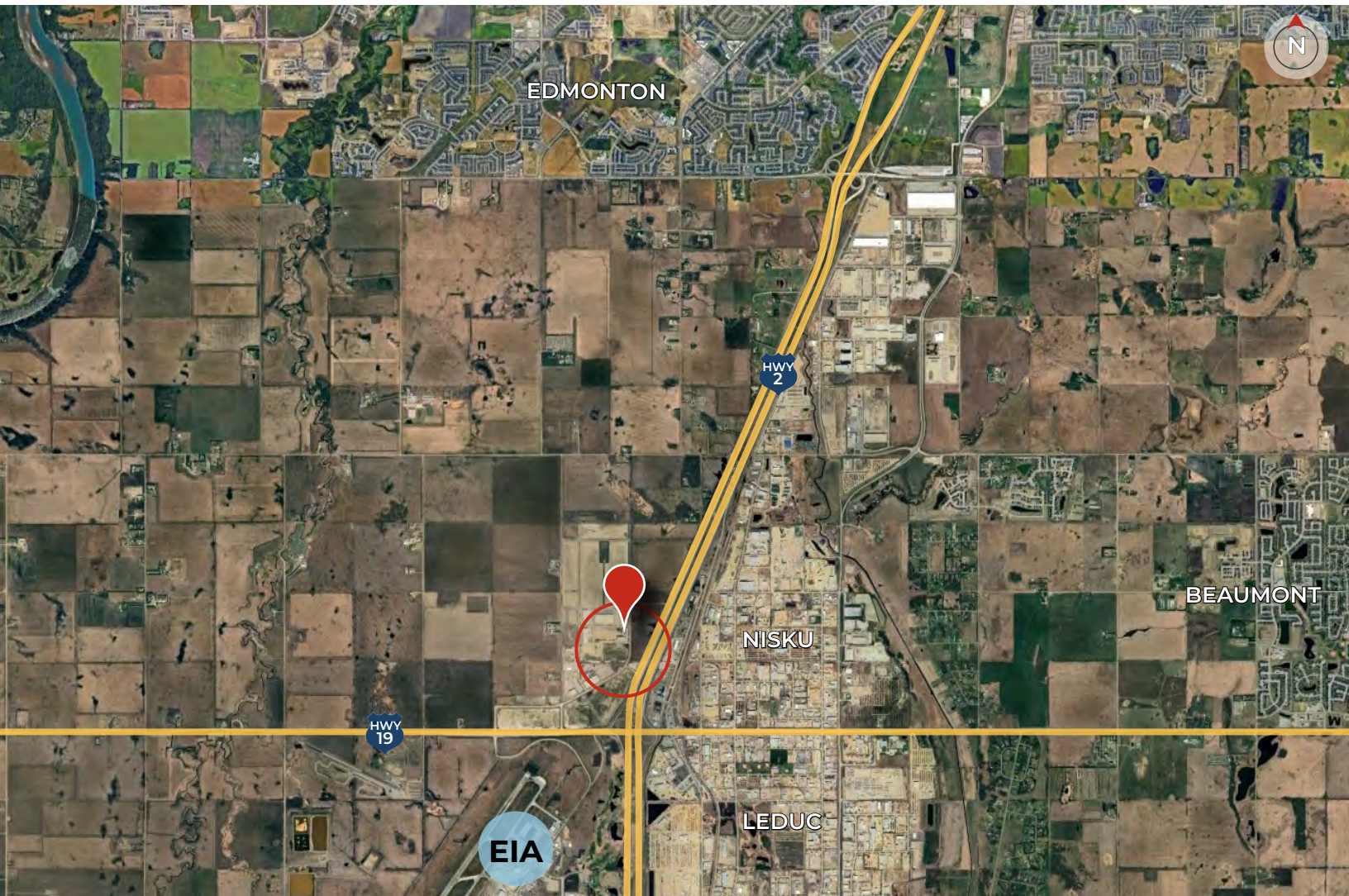


T 780.448.0800 F 780.426.3007
#201, 9038 51 Avenue NW Edmonton, AB T6E 5X4

royalparkrealty.com



Property Location | The Vaults, 13005-93 Ave SW, Edmonton, AB



Prime Location in South Edmonton

- Units range from 1,680 to 3,710 sq ft ±
- Situated in Discovery Business Park
- Quick access to QE II, Highway 19, and Edmonton International Airport



**ROYAL PARK
REALTY™**

T 780.448.0800 F 780.426.3007
#201, 9038 51 Avenue NW Edmonton, AB T6E 5X4

royalparkrealty.com

THE VAULTS

13005-93 Ave SW, Edmonton, AB

Premium Lifestyle Storage Condos in South Edmonton



Secure Your Unit Now:

TYLER WEIMAN, SIOR

Partner, Associate

780.995.0028

tyler@royalparkrealty.com

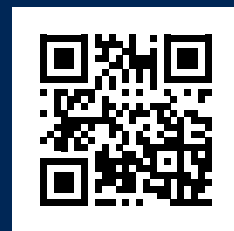
JOANNA LEWIS

Associate

780.423.7580

joanna@royalparkrealty.com

NOW SELLING



**ROYAL PARK
REALTY™**

T 780.448.0800 F 780.426.3007
#201, 9038 51 Avenue NW Edmonton, AB T6E 5X4

royalparkrealty.com