



FOR LEASE

620 N 1100 E Street
Suites 3 & 4
St. George, UT 84770

± 2,714 SF CONTIGUOUS

Property Specs

LEASED PRICE	\$1.10/SF/Month + NNN
CAM RATE	\$0.20/SF/Month
SUITE SIZE	Suite 3 ± 1,242 SF Suite 4 ± 1,472 SF
TOTAL AVAILABLE	± 2,714 SF
TAX ID	SG-BACC-3
TYPE	Industrial Office/Retail Warehouse
ZONING	PD Manufacturing

- Units can be combined for a total of ±2,714 SF
- Small office with restroom
- Centrally located, easy access to I-15



OR TEXT 23854 TO 39200

Message frequency will vary. Message and data rates may apply. Reply HELP for help or STOP to cancel.

[ARTI Terms of Service](#) | [ARTI Privacy Statement](#)



SUMMARY

SUITE 3

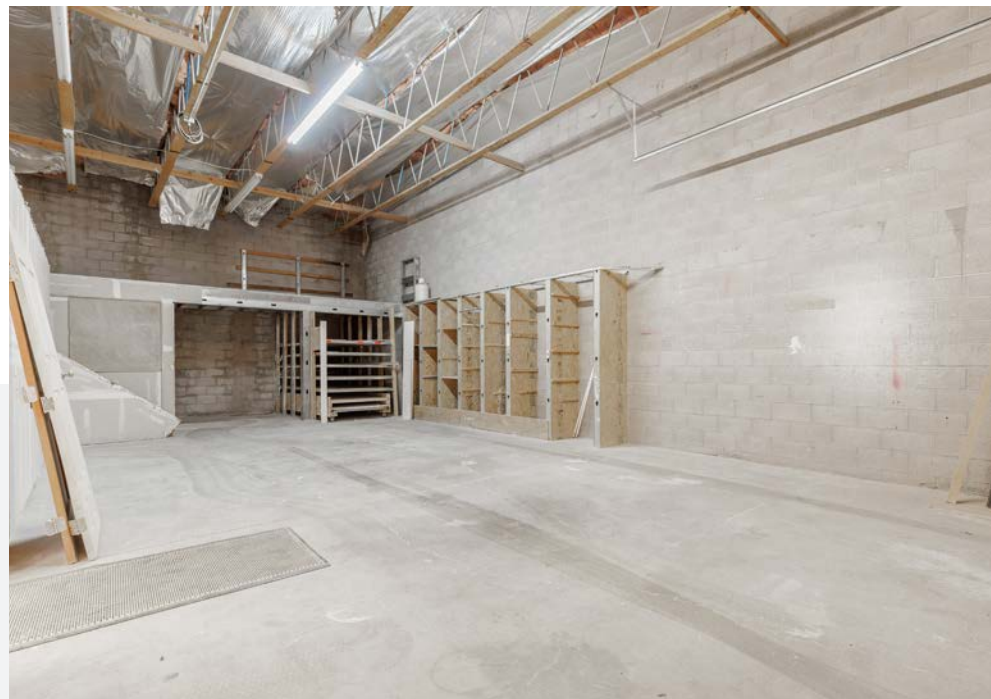


PHOTOS





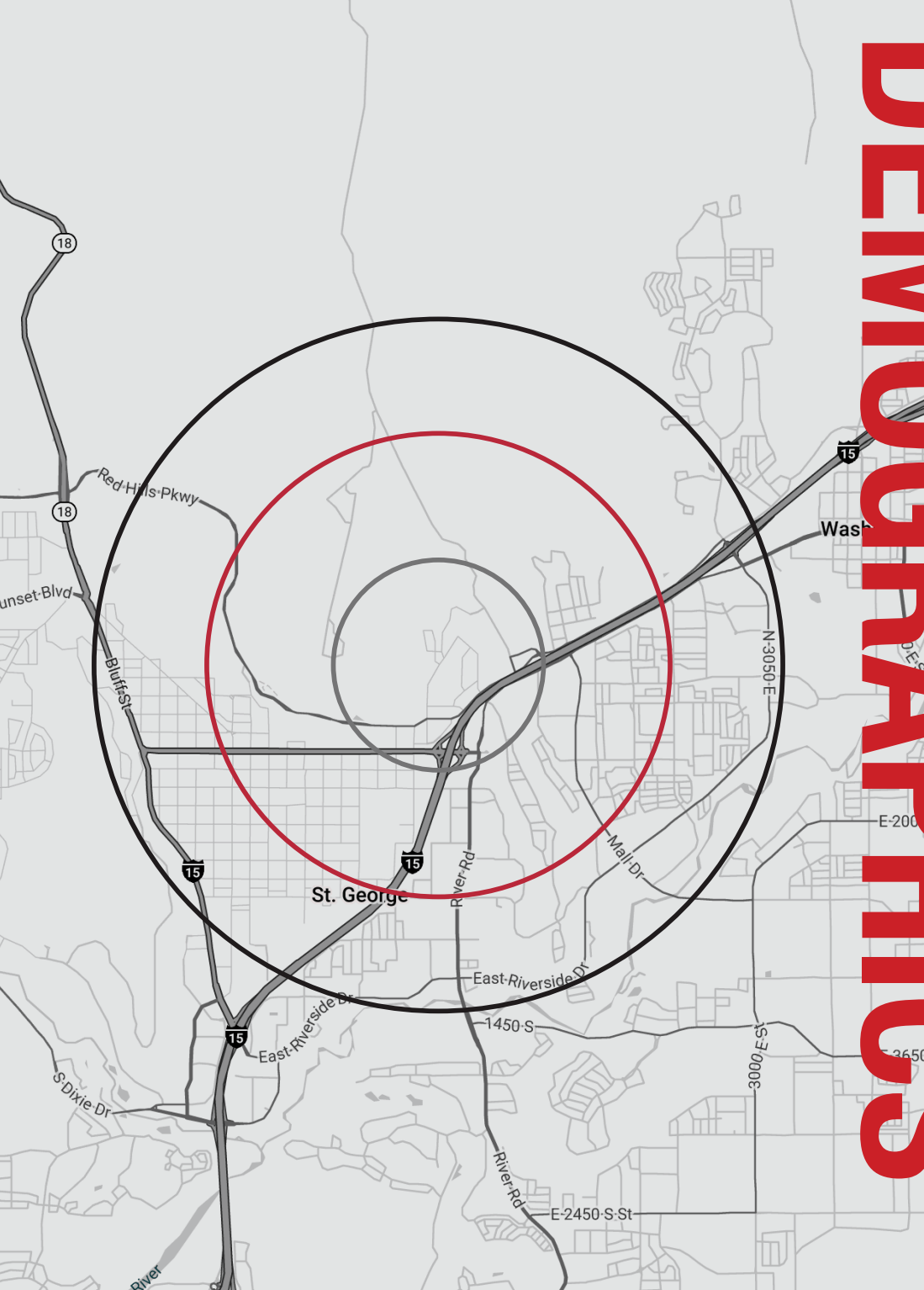
PHOTOS



AREA MAP



- Shops/Tenants
- Schools
- Public Parks
- Govt. Buildings
- Airport



DEMOGRAPHICS

POPULATION

2025 Population

1-mile

3,383

3-mile

53,039

5-mile

124,123

HOUSEHOLDS

2025 Households

1-mile

1,004

3-mile

18,985

5-mile

43,697

INCOME

2025 Average HH Income

1-mile

\$68,880

3-mile

\$93,387

5-mile

\$106,367

Traffic Counts

STREET

Red Hills Pkwy

AADT

31,000

1000 East / Red Hills Pkwy

23,000

Cities Nearby

Las Vegas, Nevada	121 miles
Los Angeles, California	388 miles
Salt Lake City, Utah	301 miles
Denver, Colorado	629 miles
Phoenix, Arizona	421 miles

TERMS & CONDITIONS

Terms and Conditions

This offering, including any related digital marketing, contains selected information pertaining to the Property and does not purport to be a representation of the state of the Property, to be all-inclusive, or to contain all or part of the information which interested parties may require to evaluate a purchase or lease of real property.

Financial Information

Any and all financial projections and information are provided for general reference purposes only and have been gathered from sources deemed reliable. Certain assumptions have been made relating to the general economy, market conditions, competition and other factors beyond the control of seller and NAI Excel. Therefore, all projections, assumptions and other information provided and made herein are subject to material variation.

Summary Documents

Additionally, all references to acreage, square feet, and other measurements are approximations. Any demographics, geographic information systems(GIS), maps, photography, zoning, site plan, survey, engineering, architectural drawings, and any other information are without assurance of their accuracy, time sensitivity, completeness, or status of approval. Documents presented may be preliminary, have no assurance of being “as built”, and may not reflect actual property boundaries or improvements. Additional information and an opportunity to inspect the Property can be made available to qualified parties. In this Memorandum, certain documents are described in summary form. These summaries do not purport to be complete nor necessarily accurate descriptions of the full documents referenced herein. Interested parties are expected to review and confirm all such summaries and other documents of whatever nature independently and not rely on the contents of this Memorandum in any manner.

Non-Warranty

Neither the seller or NAI Excel, nor any of their respective directors, officers, Affiliates or representatives make any representation or warranty, expressed or implied, as to the accuracy or completeness of this Offering Memorandum or any of its contents, as to the financial performance of the property, or as to the condition of the Property, malfunctions or mechanical defects on the Property or to any improvements thereon, including but not limited to the material, workmanship or mechanical components of the structures, foundations, roof, heating, plumbing, electrical or sewage system, drainage or moisture conditions, air conditioning, or damage by the presence of pests, mold or other organisms, environmental condition, soils conditions, the zoning of the Property, the suitability of the Property for Interested parties intended use or purpose, or for any other use or purpose.

No Obligation

No legal commitment or obligation shall arise by reason of your receipt of this Memorandum or use of its contents; Interested Parties are to rely solely on its investigations and inspections of the Property in evaluating a possible purchase or lease of the real property. The seller expressly reserves the right, at its sole discretion, to reject any or all offers to purchase or lease the Property, and/or to terminate discussions with any entity at any time, with or without notice, which may arise as a result of review of this Memorandum.

Confidentiality

By receipt of this Memorandum, you agree that this Memorandum and its contents are confidential in nature, that you will hold and treat such in the strictest confidence and that you will not disclose this Memorandum, or any of its contents, to any other entity without the prior written authorization of the seller or NAI Excel. If after reviewing this Memorandum, you have no further interest in purchasing or leasing the Property, please delete or return this Memorandum to NAI Excel.



WHY NAI

Our professionals leverage decades of experience, industry-leading technology, and a leading global network to help you excel in your real estate goals.

325+

OFFICES

1.1 BIL

SF MANAGED

5,800+

PROFESSIONALS

TOP 6

2024 LIPSEY RANKING



LEARN MORE AT
naixel.com

NAI Excel

COMMERCIAL REAL ESTATE SERVICES, WORLDWIDE

243 E St. George Blvd Ste 200
St. George, Utah 84770

435.628.1609 | naixel.com

Brandon Vandermyde

435.627.5707

brandonv@naixel.com

This offering, including any related digital marketing, contains selected information pertaining to the Property and does not purport to be a representation of the state of the Property, to be all-inclusive, or to contain all or part of the information which interested parties may require to evaluate a purchase or lease of real property.

Neither the seller or NAI Excel, nor any of their respective directors, officers, Affiliates or representatives make any representation or warranty, expressed or implied, as to the accuracy or completeness of this Offering Memorandum or any of its contents, as to the financial performance of the property, or as to the condition of the Property, malfunctions or mechanical defects on the Property or to any improvements thereon, including but not limited to the material, workmanship or mechanical components of the structures, foundations, roof, heating, plumbing, electrical or sewage system, drainage or moisture conditions, air conditioning, or damage by the presence of pests, mold or other organisms, environmental condition, soils conditions, the zoning of the Property, the suitability of the Property for interested parties intended use or purpose, or for any other use or purpose. ARTI Terms of Service | <https://brokerstechnology.com/terms-of-use/> ARTI Privacy Policy | <https://brokerstechnology.com/privacy-policy/>