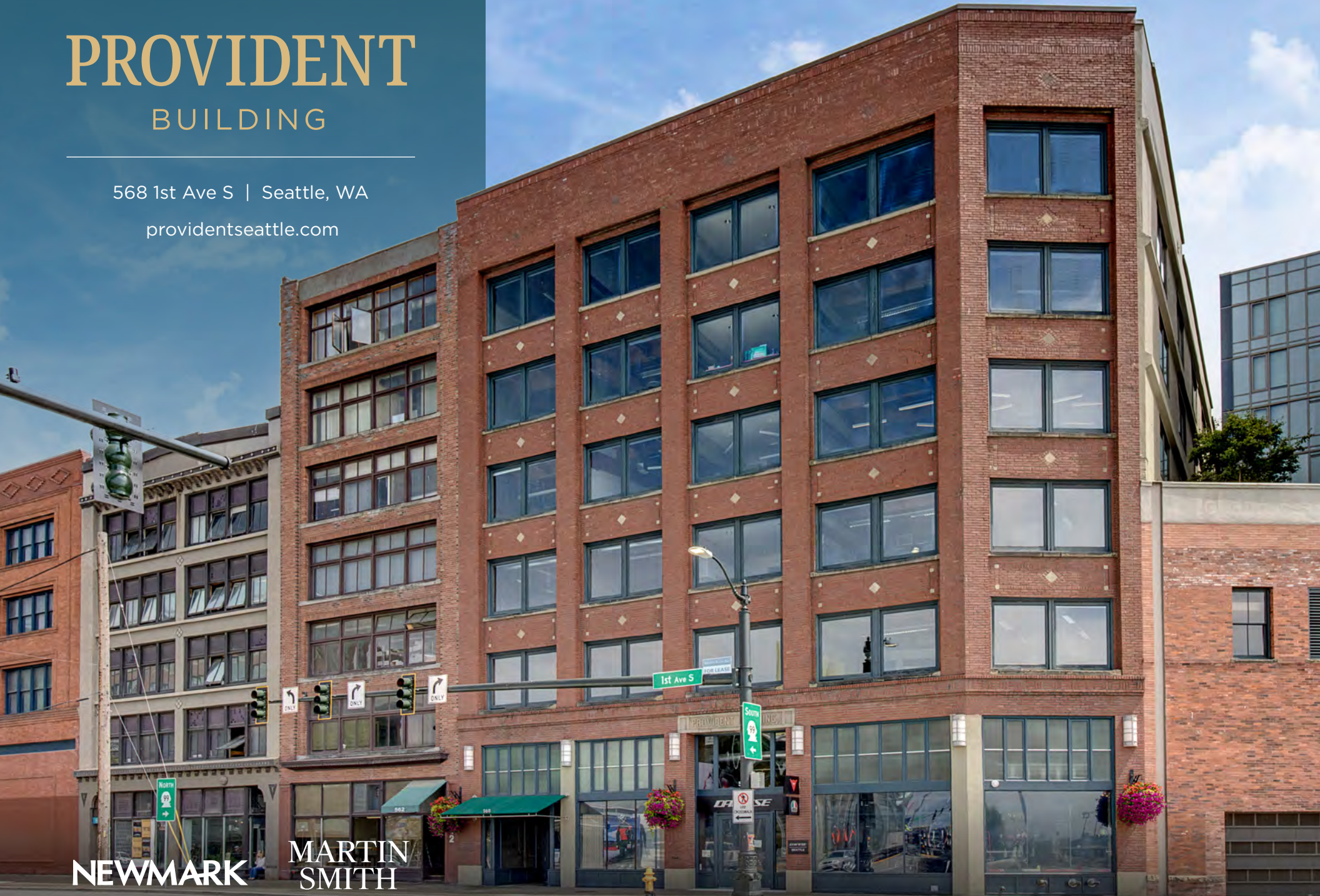


# PROVIDENT BUILDING

568 1st Ave S | Seattle, WA

[providentseattle.com](http://providentseattle.com)



**NEWMARK**

**MARTIN  
SMITH  
- INC -**



# Building Description







- Located in Pioneer Square, the former warehouse building is constructed of heavy timber, seismically reinforced brick and concrete.
- Completely renovated in the year 2000, the building is a quick walk from the Seattle Waterfront, major transit hubs and direct freeway access to I-5 and I-90.
- Located across the street from Lumen Field with views of Elliott Bay and adjacent to recent residential, retail and hotel developments in the neighborhood.

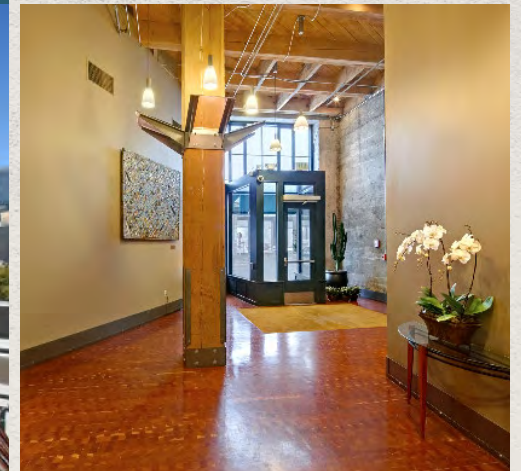
# Building Design

Size	56,107 SF
Floors	Six stories
Year Built	1910
Floors	Typical floor size is approximately 10,300 SF
Elevators	Two ( 2 ) passenger elevators



# Building Amenities

-  Secure key-card access building
-  Below grade parking
-  Tenant shower facilities
-  Bicycle parking
-  Rooftop view deck
-  HVAC





## Availabilities

Suite 200

10,212 SF

 Virtual Tour

Suite 300

10,246 SF

 Virtual Tour

Suite 500

7,449 SF

Suite 550

2,851 SF





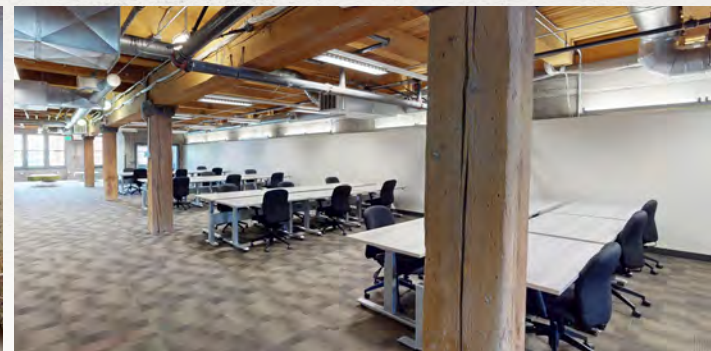
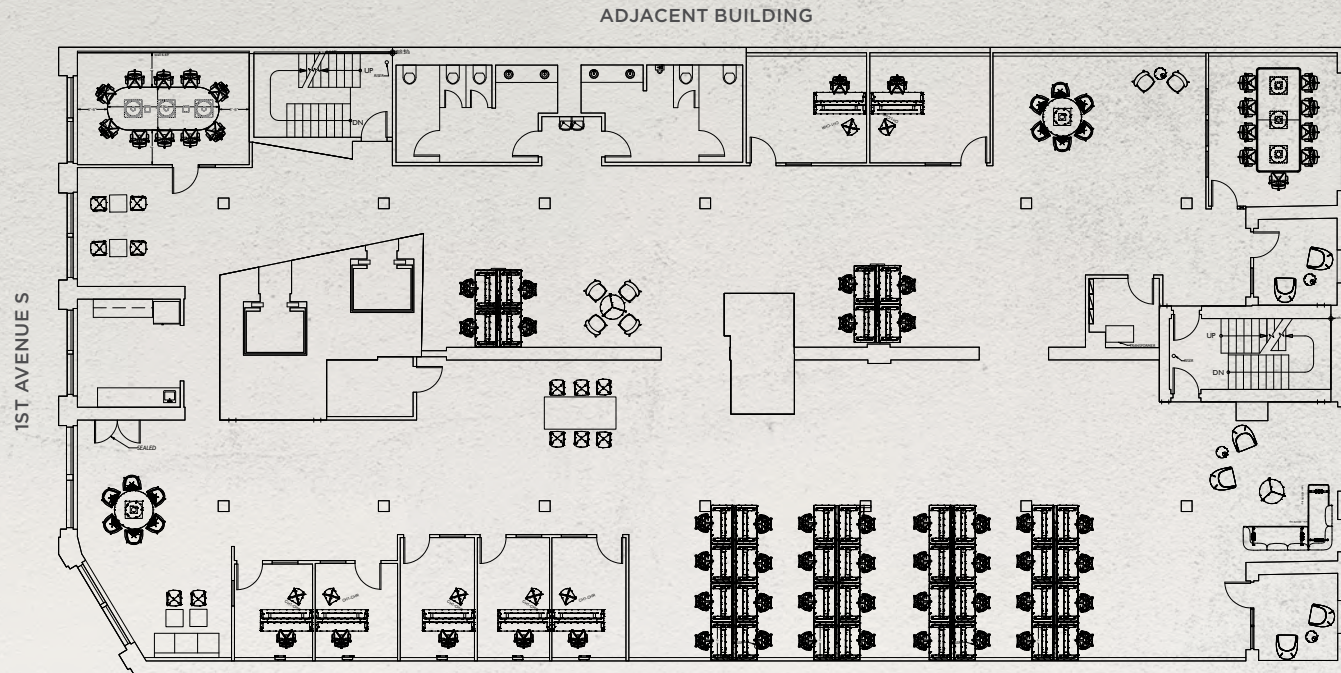
# Suite 300

 Virtual Tour

10,246 SF

Available Now

Furnished Space



# Suite 500

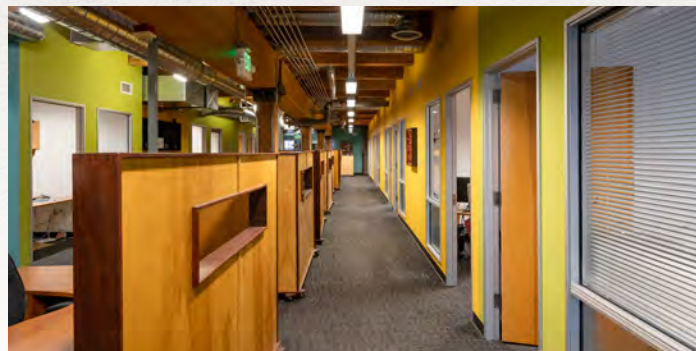
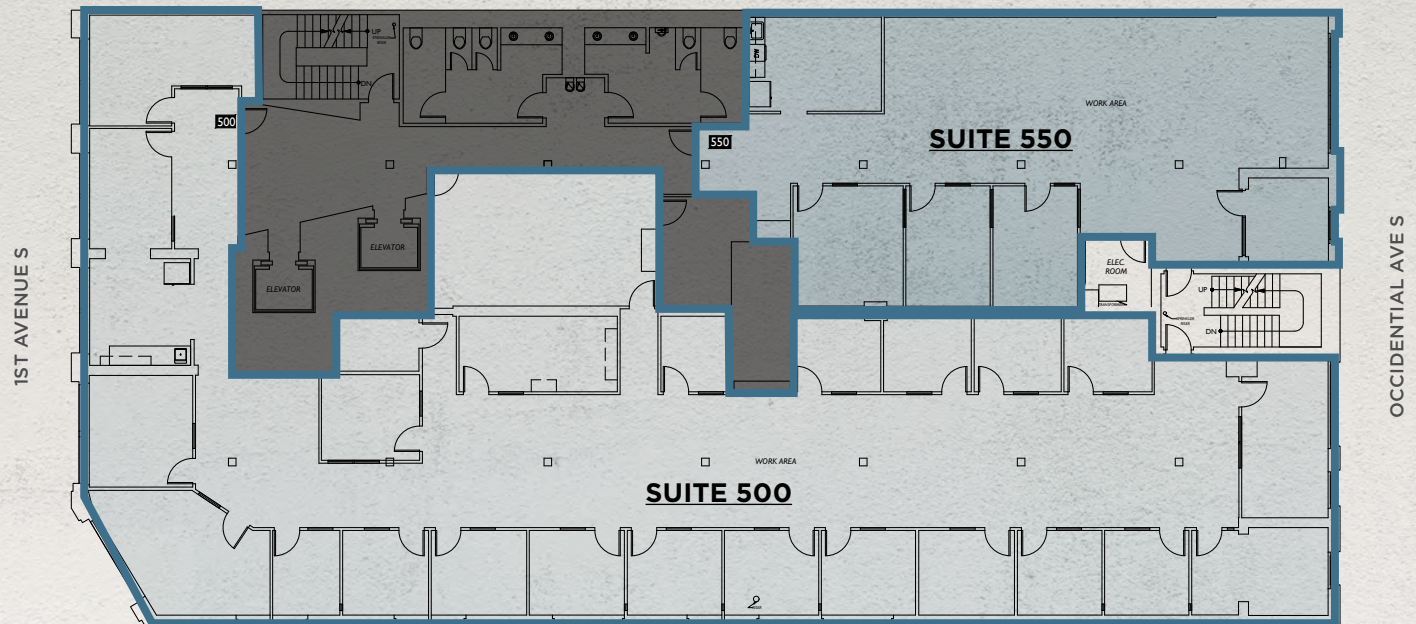
7,449 SF

Available Now

# Suite 550

2,851 SF

Available Now



# PROVIDENT BUILDING

568 1st Ave S | Seattle, WA

[PROVIDENTSEATTLE.COM](http://PROVIDENTSEATTLE.COM)

**Daniel Seger**

206.487.5163

[daniel.seger@nrmk.com](mailto:daniel.seger@nrmk.com)

**Cavan O'Keefe**

206.395.2903

[cavan.okeefe@nrmk.com](mailto:cavan.okeefe@nrmk.com)

**Brody O'Keefe**

206.395.2917

[brody.okeefe@nrmk.com](mailto:brody.okeefe@nrmk.com)

**Mark Astor**

206.719.0291

[mastor@martinsmith.com](mailto:mastor@martinsmith.com)

**NEWMARK**

**MARTIN  
SMITH  
- INC -**

The distributor of this communication is performing acts for which a real estate license is required. The information contained herein has been obtained from sources deemed reliable but has not been verified and no guarantee, warranty or representation, either express or implied, is made with respect to such information. Terms of sale or lease and availability are subject to change or withdrawal without notice. [www.nrmk.com](http://www.nrmk.com)