

PRIME LOCATION IN THE HEART OF CANTON FOR SALE

3211 EASTERN AVE

Baltimore, MD 21224

Available: 1,980 SF



LISTING DATA

AVAILABLE SF: 1,980 SF

ECONOMIC DATA

SALE PRICE: \$449,900

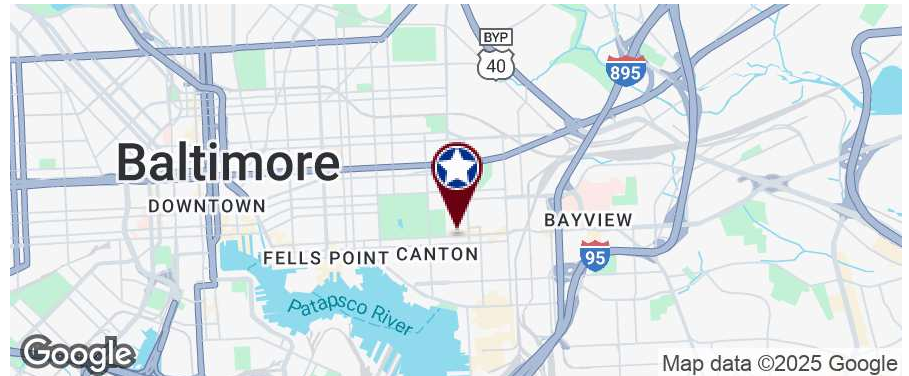
PROPERTY INFORMATION

COUNTY: Baltimore city

BUILDING DATA

RENOVATED: 2008

ZONING: C-1



PROPERTY OVERVIEW

Fully renovated historic rowhouse in the heart of Canton. Amazing visibility on the Eastern Avenue retail corridor in close proximity to The Creative Alliance, Patterson Park and the iconic Matthew's Pizza! This two office story property features a finished basement, courtyard and light filled carriage house conference room with skylights and oversized windows. Tasteful built in office pods with custom molding and built in desks provide private desk areas, but can also be easily removed for a more wide open feel. This is an owner occupied property and it has been impeccably maintained.

Kate Jordan, SIOR
Principal
410.336.5314
kjordan@lee-associates.com

All information furnished regarding property for sale, rental or financing is from sources deemed reliable, but no warranty or representation is made to the accuracy thereof and same is submitted to errors, omissions, change of price, rental or other conditions prior to sale, lease or financing or withdrawal without notice. No liability of any kind is to be imposed on the broker herein.

PRIME LOCATION IN THE HEART OF CANTON FOR SALE

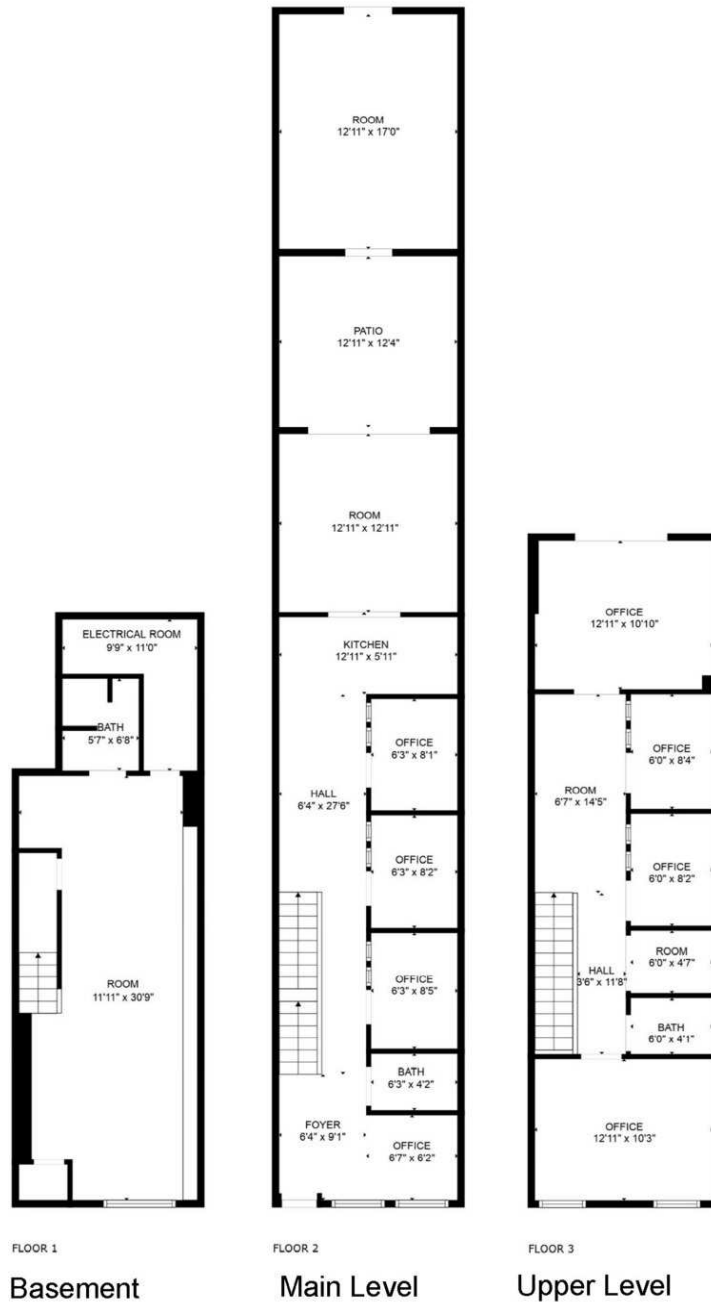
3211 EASTERN AVE

Baltimore, MD 21224

Available: 1,980 SF



COMMERCIAL REAL ESTATE SERVICES



Kate Jordan, SIOR
Principal
410.336.5314
kjordan@lee-associates.com

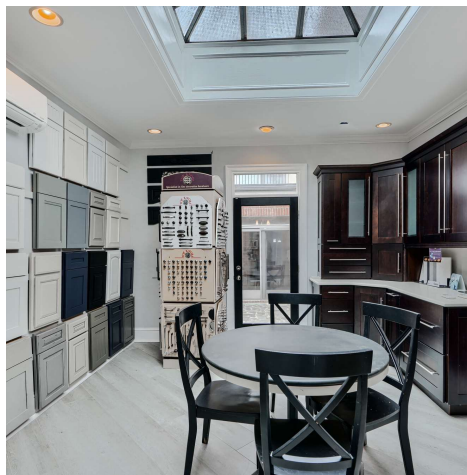
All information furnished regarding property for sale, rental or financing is from sources deemed reliable, but no warranty or representation is made to the accuracy thereof and same is submitted to errors, omissions, change of price, rental or other conditions prior to sale, lease or financing or withdrawal without notice. No liability of any kind is to be imposed on the broker herein.

PRIME LOCATION IN THE HEART OF CANTON FOR SALE

3211 EASTERN AVE

Baltimore, MD 21224

Available: 1,980 SF



Kate Jordan, SIOR
Principal
410.336.5314
kjordan@lee-associates.com

All information furnished regarding property for sale, rental or financing is from sources deemed reliable, but no warranty or representation is made to the accuracy thereof and same is submitted to errors, omissions, change of price, rental or other conditions prior to sale, lease or financing or withdrawal without notice. No liability of any kind is to be imposed on the broker herein.

PRIME LOCATION IN THE HEART OF CANTON FOR SALE

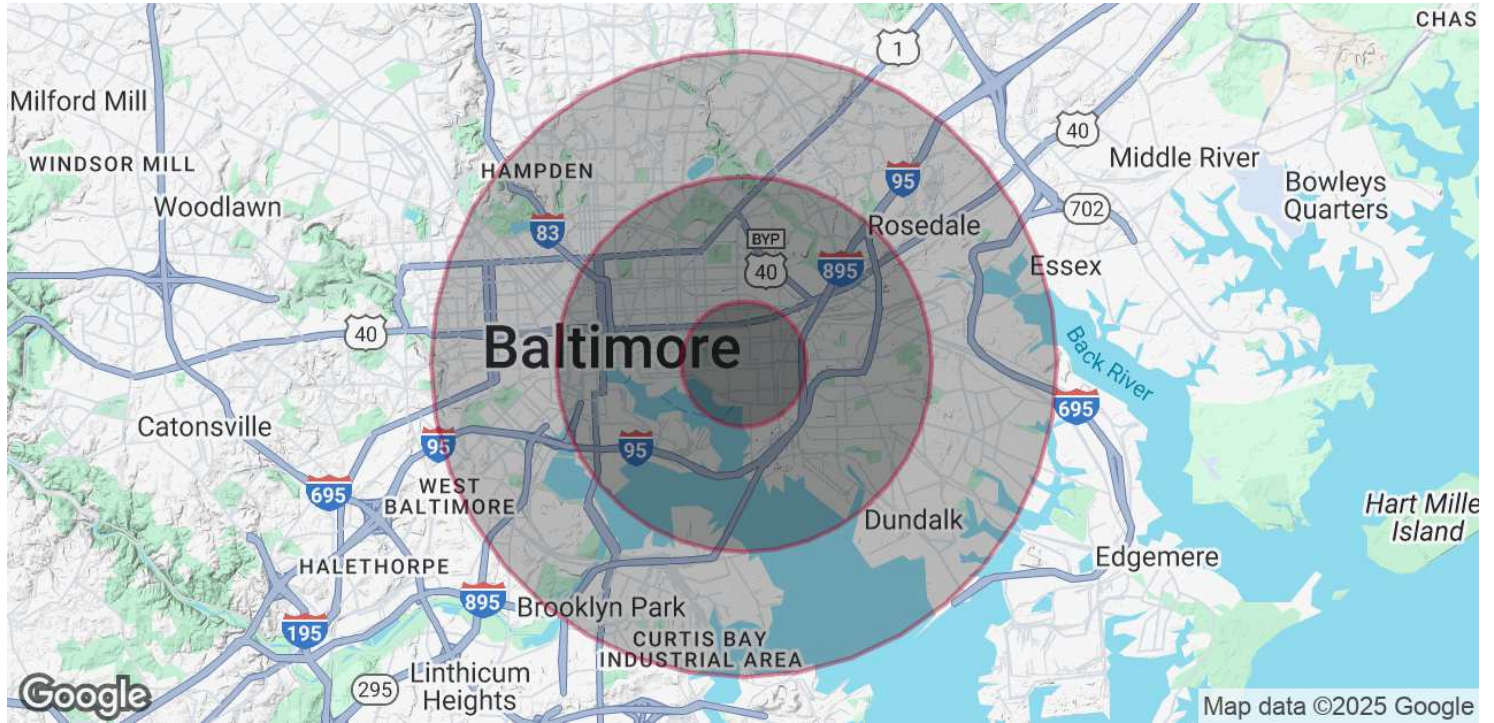
3211 EASTERN AVE

Baltimore, MD 21224

Available: 1,980 SF



COMMERCIAL REAL ESTATE SERVICES



POPULATION

	1 MILE	3 MILES	5 MILES
Total Population	42,635	188,768	466,711
Average Age	35	38	39
Average Age (Male)	35	37	38
Average Age (Female)	36	38	39

HOUSEHOLDS & INCOME

	1 MILE	3 MILES	5 MILES
Total Households	18,848	86,385	201,209
# of Persons per HH	2.3	2.2	2.3
Average HH Income	\$122,473	\$94,502	\$86,596
Average House Value	\$319,663	\$276,214	\$253,754

Demographics data derived from AlphaMap

Kate Jordan, SIOR
Principal
410.336.5314
kjordan@lee-associates.com

All information furnished regarding property for sale, rental or financing is from sources deemed reliable, but no warranty or representation is made to the accuracy thereof and same is submitted to errors, omissions, change of price, rental or other conditions prior to sale, lease or financing or withdrawal without notice. No liability of any kind is to be imposed on the broker herein.