

FOR LEASE

One Bartholomew Lane, EC2

1st Floor – 5,896 sq ft
High Quality Fitted Office Space



www.cbre.co.uk

CBRE

FOR LEASE One Bartholomew Lane, EC2

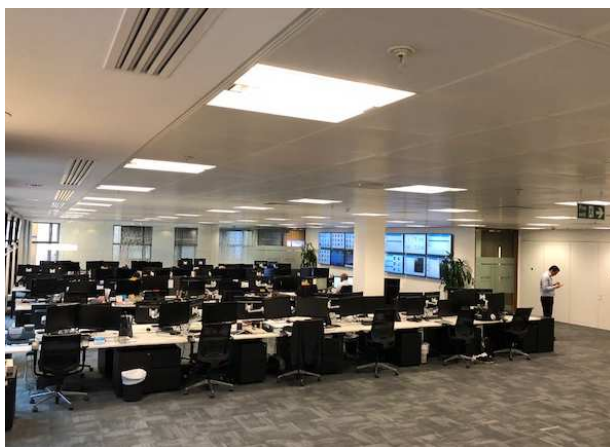
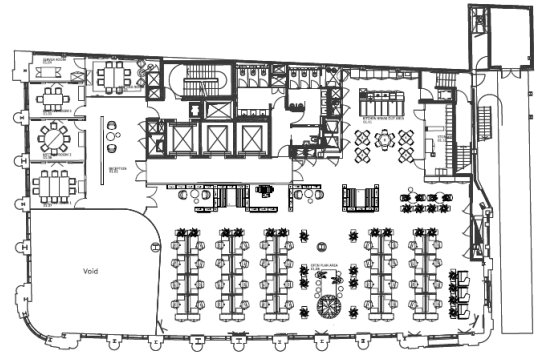
1st Floor – 5,896 sq ft

London, EC2



SPECIFICATION

- + Four pipe fan coil air conditioning
- + LG7 lighting
- + Suspended metal tile floor
- + 2.75m floor to ceiling height
- + 3 x 17 Person Passenger Lifts
- + Double height reception entrance
- + Bicycle racks
- + Showers



Level	sq ft	sq m
1 st Floor	5,896	547

TERMS

- + Lease: By way of an assignment or sublease until November 2023
- + Rent: On Application
- + Rates y/e March 2019: £24.57 per sq ft
- + Service Charge y/e 2018: £10.64 per sq ft



PRIME LOCATION

One Bartholomew Lane is located in the heart of the City, situated opposite the Bank of England and a short walk from The Royal Exchange.

The building is a 5 minute walk from Bank Underground Station (Northern, Central, Waterloo & City and DLR Lines) Liverpool Street Station (National Rail as well as Circle, Central, Metropolitan and Hammersmith & City Underground Lines) and London Cannon Street Station (National Rail, Circle and District Lines).



CONTACT US

DAVID WILSON

+44 207 182 8160
+44 7584 339 242
david.t.wilson@cbre.com

ALEX KERR

+44 207 182 2165
+44 7824166 673
alex.kerr@cbre.com

CBRE Limited on their behalf and for the Vendors or Lessors of this property whose Agents' they are, give notice that:

1. These particulars are set out as a general outline only for guidance to intending Purchasers or Lessees, and do not constitute any part of an offer or contract.
2. Details are given without any responsibility and any intending Purchasers, Lessees or Third Parties should not rely on them as statements or representations of fact, but must satisfy themselves by inspection or otherwise as to the correctness of each of them.
3. No person in the employment of CBRE Limited has any authority to make any representation or warranty whatsoever in relation to this property.
4. Unless otherwise stated, all prices and rents are quoted exclusive of VAT. Subject to contract, September 2018.