



111 Washington Street

HOBOKEN, NJ

Flagship Retail Opportunity in the Heart of Downtown Hoboken

Street Level

3,560 SF

Second Level

2,200 SF

Lower Level

2,000 SF

- New construction
- One building off 1st Street
- Ceiling heights: 13'
- Frontage: 60' on Washington Street
- Liquor license possible
- Immediate neighbors: Walgreens, honeygrow, Wok to Walk, Quality Greens Kitchen, Chipotle, Starbucks, Mamoun's, CVS

201 Route 17 North, Rutherford, NJ 07070

Dean Tselepis Director 201.460.5156 dtselepis@ngkf.com



The information contained herein has been obtained from sources deemed reliable but has not been verified and no guarantee, warranty or representation, either express or implied, is made with respect to such information. Terms of sale or lease and availability are subject to change or withdrawal without notice.

111 Washington Street

HOBOKEN, NJ

6TH STREET

5TH STREET

4TH STREET

3RD STREET

2ND STREET

1ST STREET

NEWARK STREET

OBSERVER HIGHWAY

WASHINGTON STREET

planet fitness

ANTHROPOLOGIE

BLUESTONE LANE

BEN & JERRY'S

UFC GYM

francesca's ATHLETA

SEPHORA

Bright Horizons

Starbucks

Panera

MAMOUN'S

GAP

CITYMD

CHIPOTLE

QUALITY GREENS

DEL FRISCO'S GRILLE

GFG

2,000,000+ SF of existing office along Hoboken Waterfront

honeygrow

COLD STONE

AT&T

hoboken CITY HALL

111 Washington St

Walgreens

CVS pharmacy

PATH

NJ TRANSIT

HUDSON-BERGEN LIGHT RAIL

PATH Station	25,174 average weekday passenger boardings
NJ Transit Station	16,297 average weekday passenger boardings
Light Rail Station	5,022 average weekday passenger boardings

REDEVELOPMENT ZONE

Hoboken Terminal & Rail Yard LCOR Redevelopment

Approved for 2.2 million square feet of residential, office, and retail space

111 Washington Street

HOBOKEN, NJ

Storefront Rendering

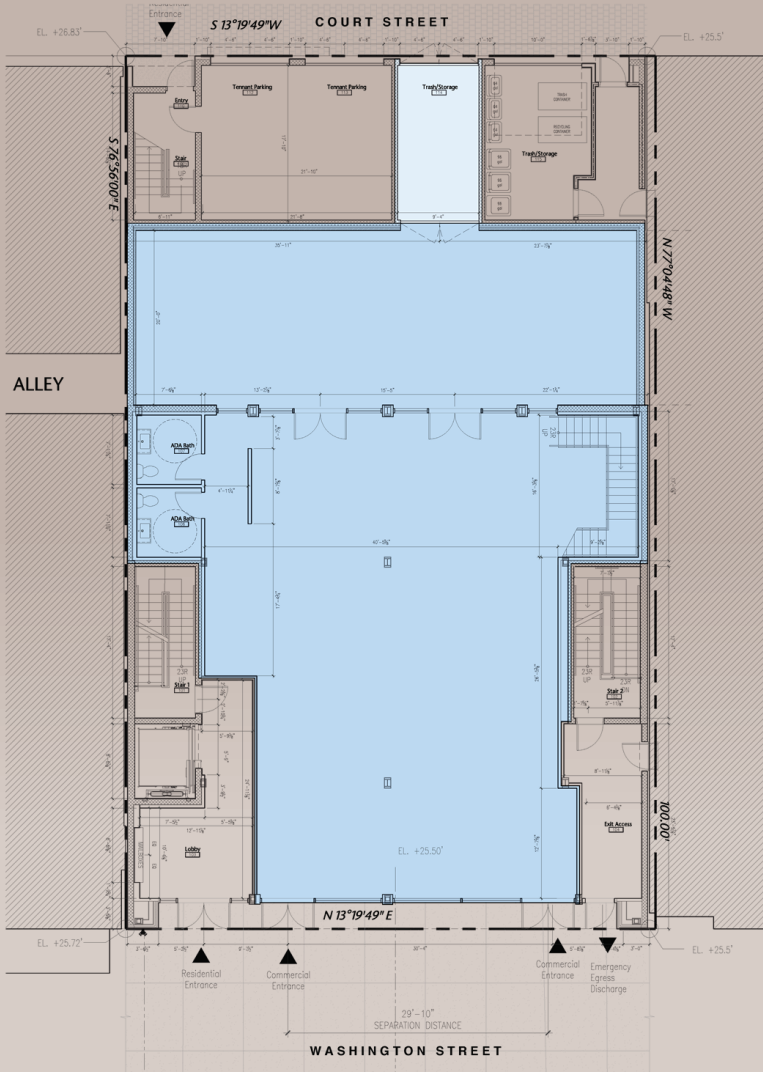


Bird's-Eye View - Corner of Washington Street & 1st Street

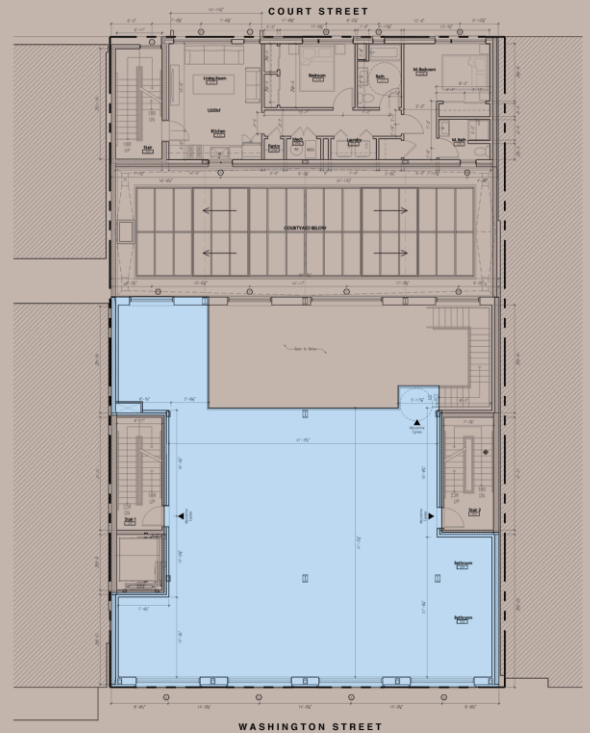


111 Washington Street

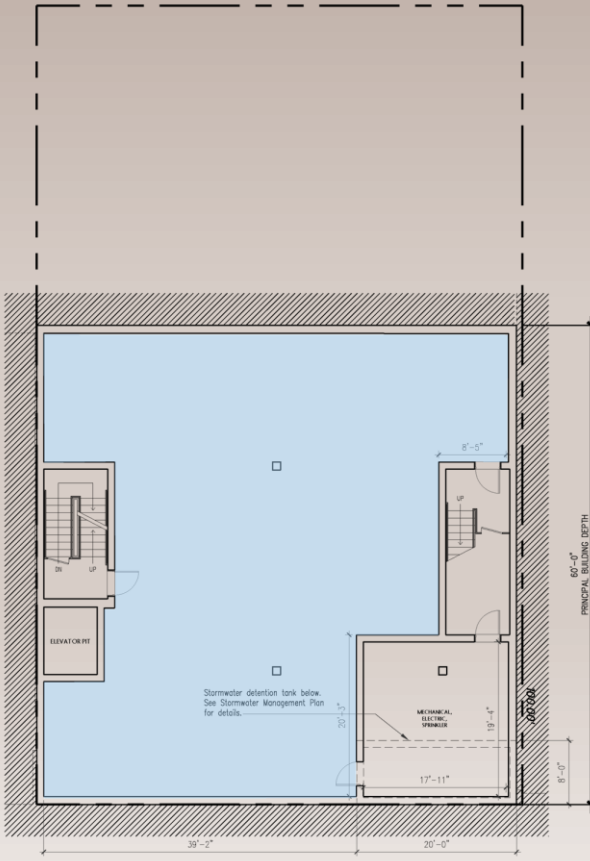
HOBOKEN, NJ



Street Level 3,560 SF



Second Level 2,200 SF



Lower Level 2,000 SF