

# 1355

## PEACHTREE

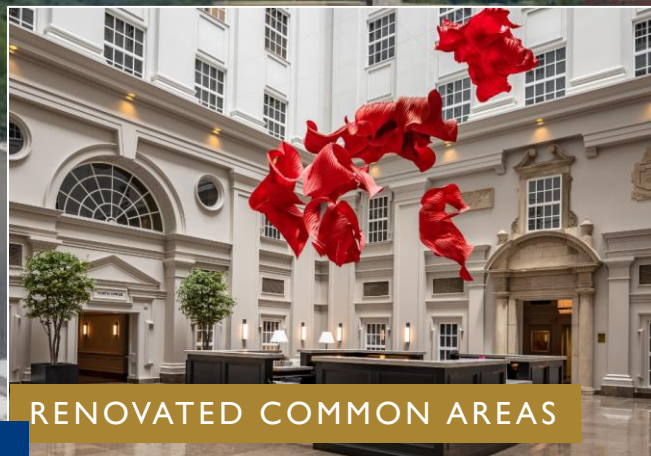
1355 Peachtree St NE, Atlanta, GA 30309

### 4,080 SF

Move-in Ready  
Sublease  
Opportunity

#### Space Highlights

- Plug & Play
- Furniture Available



RENOVATED COMMON AREAS



# NEWMARK

3455 Peachtree Road • Suite 1800  
Atlanta, GA 30326 • t 770-552-2400



[nmrk.com](http://nmrk.com)

1355 Peachtree is in the heart of Midtown. This Class A Office building is full of Atlanta history with a contemporary style. Ample area amenities and controlled parking. Easy accessibility to MARTA stations.

For more information:

**Emery Cresswell**

Director

t 770-552-2493

[Emery.Cresswell@nmrk.com](mailto:Emery.Cresswell@nmrk.com)

**Mitchell Karrh**

Associate

t 404-926-1139

[Mitchell.Karrh@nmrk.com](mailto:Mitchell.Karrh@nmrk.com)

# 1355

## PEACHTREE

1355 Peachtree St NE, Atlanta, GA 30309

### 4,080 SF

Move-in Ready  
Sublease  
Opportunity

### Space Highlights

- Plug & Play
- Furniture Available

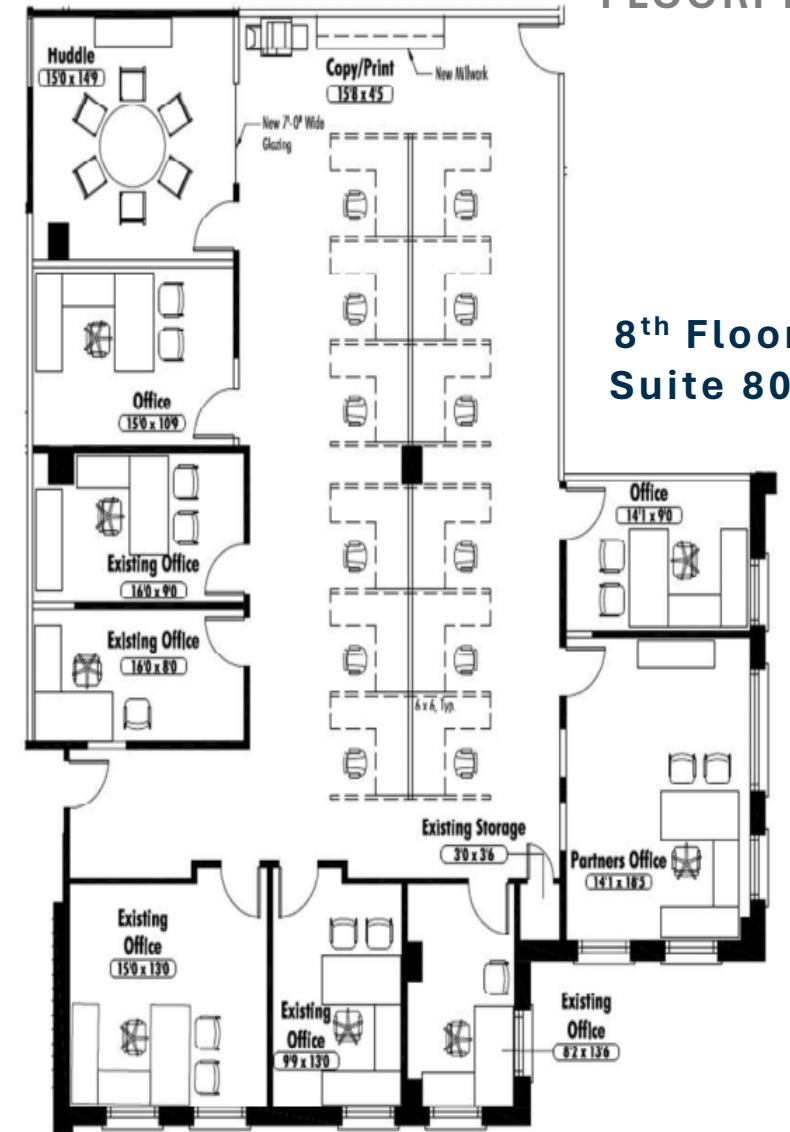


- Rental Rate Available Upon Request
- Immediate Occupancy
- Sublease Term Thru August 31, 2028



Located in  
the heart of  
Midtown  
Atlanta's  
Arts  
District

### FLOORPLAN



# NEWMARK

3455 Peachtree Road • Suite 1800  
Atlanta, GA 30326 • t 770-552-2400



nmrk.com

The information contained herein has been obtained from sources deemed reliable but has not been verified and no guarantee, warranty or representation, either express or implied, is made with respect to such information. Terms of sale or lease and availability are subject to change or withdrawal without notice.

For more information:

Emery Cresswell  
Director

t 770-552-2493

Emery.Cresswell@nmrk.com

Mitchell Karrh  
Associate

t 404-926-1139

Mitchell.Karrh@nmrk.com