

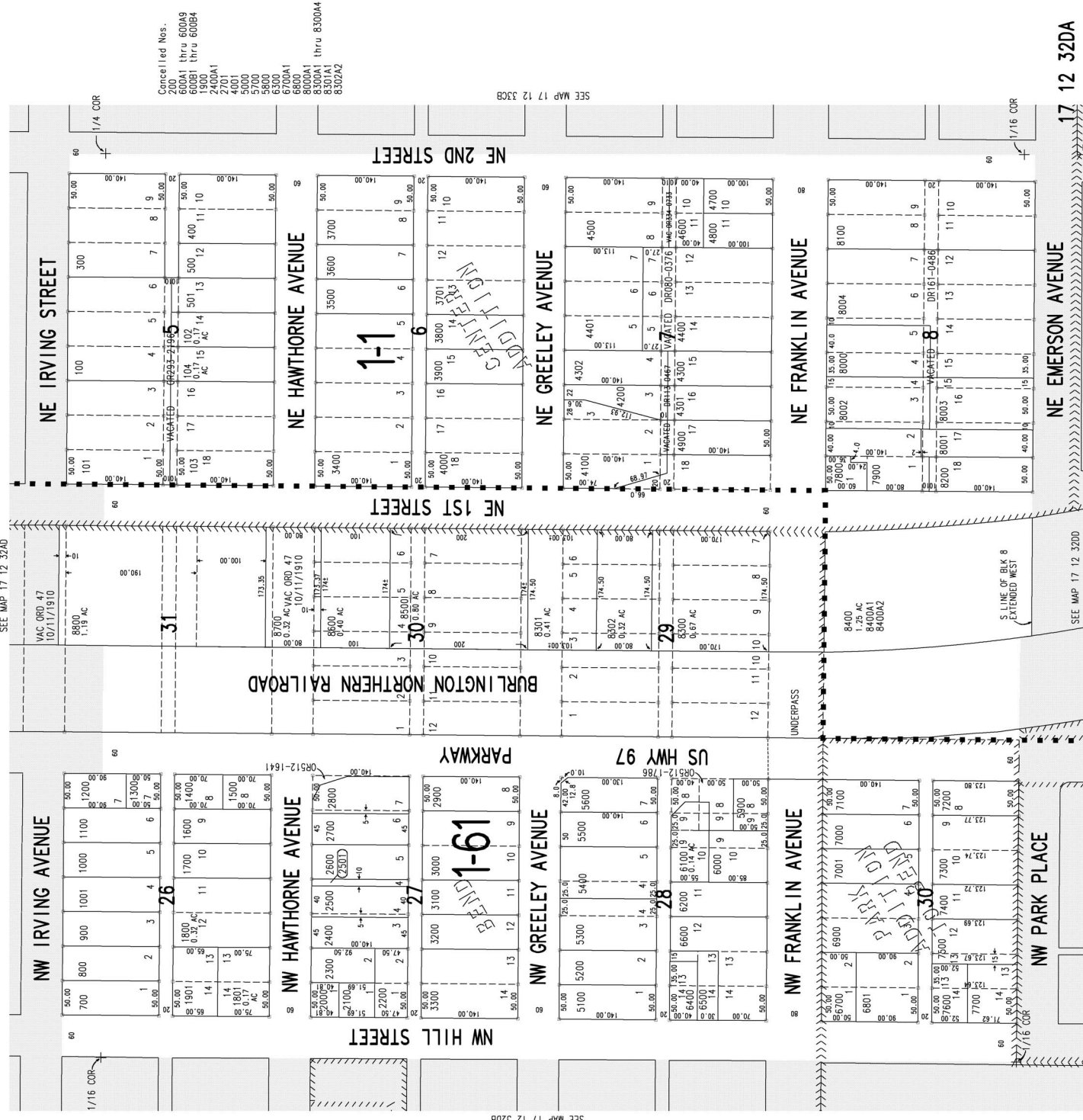
THIS MAP WAS PREPARED FOR
ASSESSMENT PURPOSE ONLY.
REVISED: 01/03/2007

NE1/4 SE1/4 SEC. 32 T.17S. R.12E. W.M.
DESCHUTES COUNTY

17 12 32DA

1" = 100'

SEE MAP 17 12 32A0



SEE MAP 17 12 32B0

SEE MAP 17 12 32CB

Cancelled Nos.
2000A1 thru 60049
60051 thru 60064
1900 thru 60064
2400A1
4001
5000
5800
6300
6700A1
6800
8000A1
8300A1 thru 830044
8302A2

17 12 32DA

SEE MAP 17 12 32D0