



# FOR LEASE



## 625 BROADWAY BLDG. - FULL FLOOR

625 SW BROADWAY  
PORTLAND, OREGON 97205

### AVAILABLE

Suite 500: 4,626 RSF  
(Including 791 RSF Penthouse  
Conference Room)

### RATES

\$24 - \$29 Full Service

### BUILDING HIGHLIGHTS

- Historic, landmark building
- Newly renovated lobby
- On-site shower facilities
- Adjacent to Pioneer Square, Portland's "Living Room" and TriMet MAX line
- Customer parking nearby

### PAUL ANDREWS

503.546.4542  
pandrews@melvinmark.com  
Licensed in OR

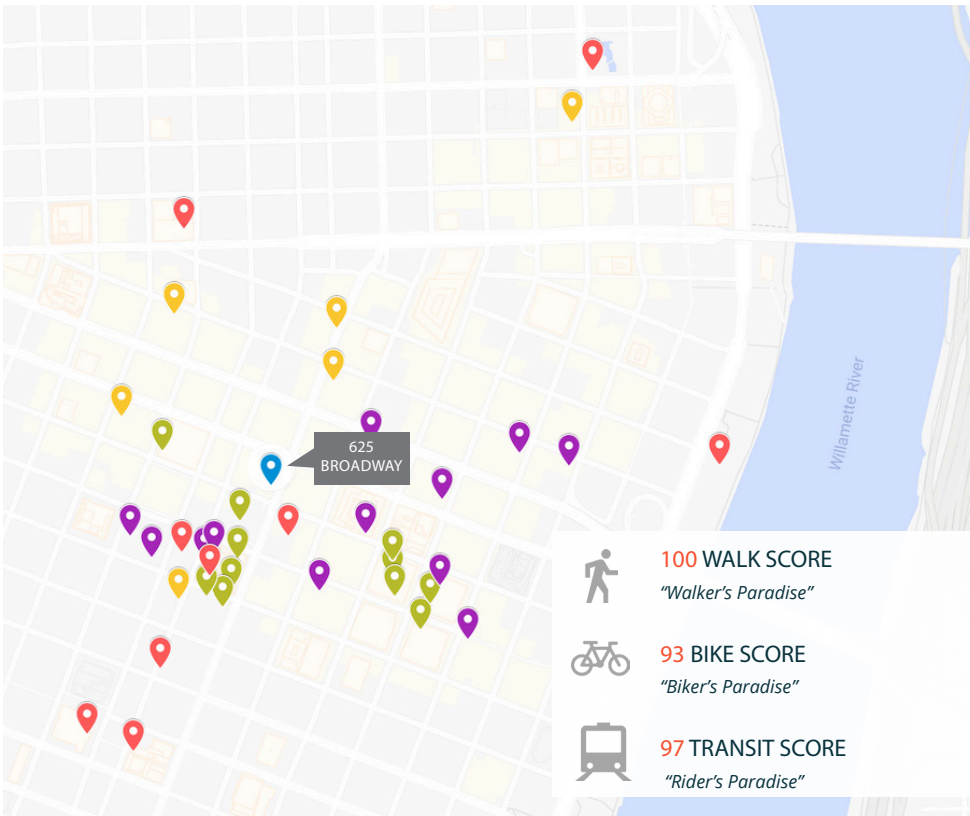
### BRYN HOKKANEN

503.546.4534  
bhokkanen@melvinmark.com  
Licensed in OR



# ABOUT 625 BROADWAY

625 SW BROADWAY | PORTLAND, OREGON 97205



## LOCATION

- Located next to Nordstrom in bustling Retail District
- Adjacent to Pioneer Square, Portland's "Living Room" and TriMet MAX line
- Customer parking nearby

## HOSPITALITY

The Nines Hotel  
The Sentinel Hotel  
Paramount  
Hotel Lucia  
Hotel Vintage Plaza  
The Benson  
Hilton Hotel  
Ace Hotel  
The Society Hotel

## RETAIL

Nordstrom  
Pioneer Place  
City Target  
Louis Vuitton  
Tiffany & Company  
H&M  
Banana Republic  
Mario's  
Columbia Sportswear  
Mountain Hardware  
J Crew

## RESTAURANTS

Flying Elephants at Fox Tower  
Departure Restaurant + Lounge  
Punch Bowl Social  
Chipotle Mexican Grill  
Huber's Cafe  
Mother's Bistro & Cafe  
Virginia Cafe  
Pastini Pastaria  
Ben & Jerry's  
Rialto  
Sushi Sakura

## ATTRACTIONS

Pioneer Square  
Director's Park  
Park Blocks  
Fox Tower Cinemas  
Pioneer Place Theater  
Arlene Schnitzer Concert Hall  
Portland Art Museum  
Oregon Historical Society  
Tom McCall Park  
Lan Su Chinese Garden  
Powell's Books

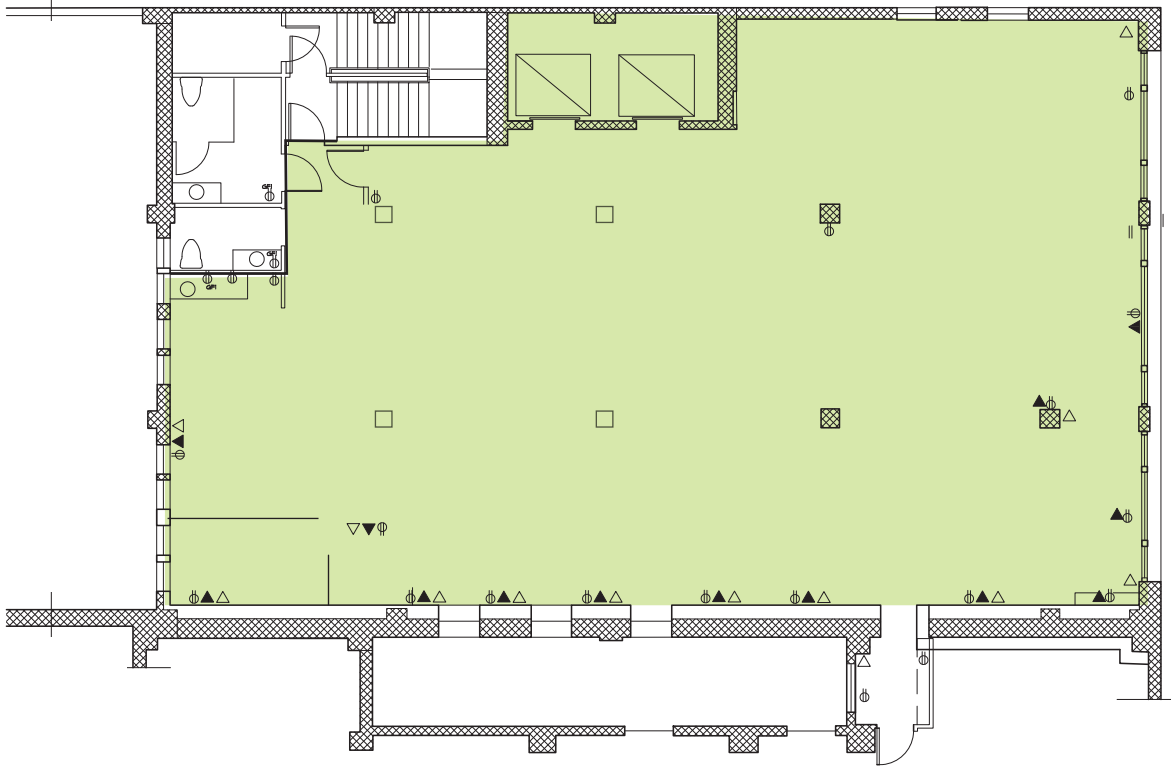
ABOUT  
**625 BROADWAY**  
FLOOR PLAN

**AVAILABLE**

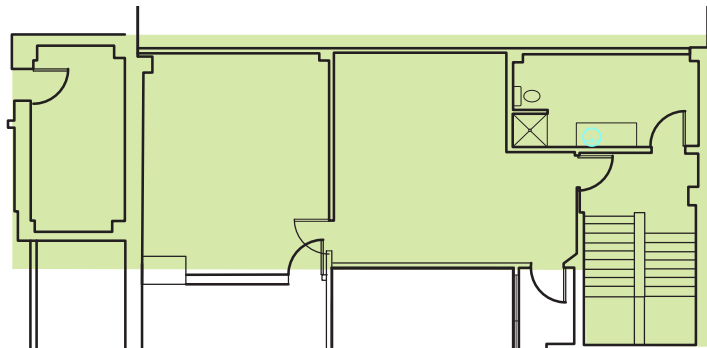
Suite 500: 4,626 RSF  
(Including 791 RSF Penthouse  
Conference Room)

**RATES**

\$24 - \$29 Full Service



**Suite 500** 4,626 RSF  
(Total, including 791 RSF  
Penthouse)



**6th floor  
Penthouse**

FOR LEASE 625 BROADWAY  
625 SW BROADWAY  
PORTLAND, OREGON 97205

PAUL ANDREWS  
503.546.4542  
pmandrews@melvinmark.com

BRYN HOKKANEN  
503.546.4534  
bhokkanen@melvinmark.com

All rights reserved. All information contained herein is from sources deemed reliable; however, no representation or warranty is made to the accuracy thereof.