



Metropolitan Community College  
**METROPOLITAN COMMUNITY COLLEGE**

7,758 VPD

# 3251 SW 3rd Street Lee's Summit, MO

## 2019 DEMOGRAPHICS

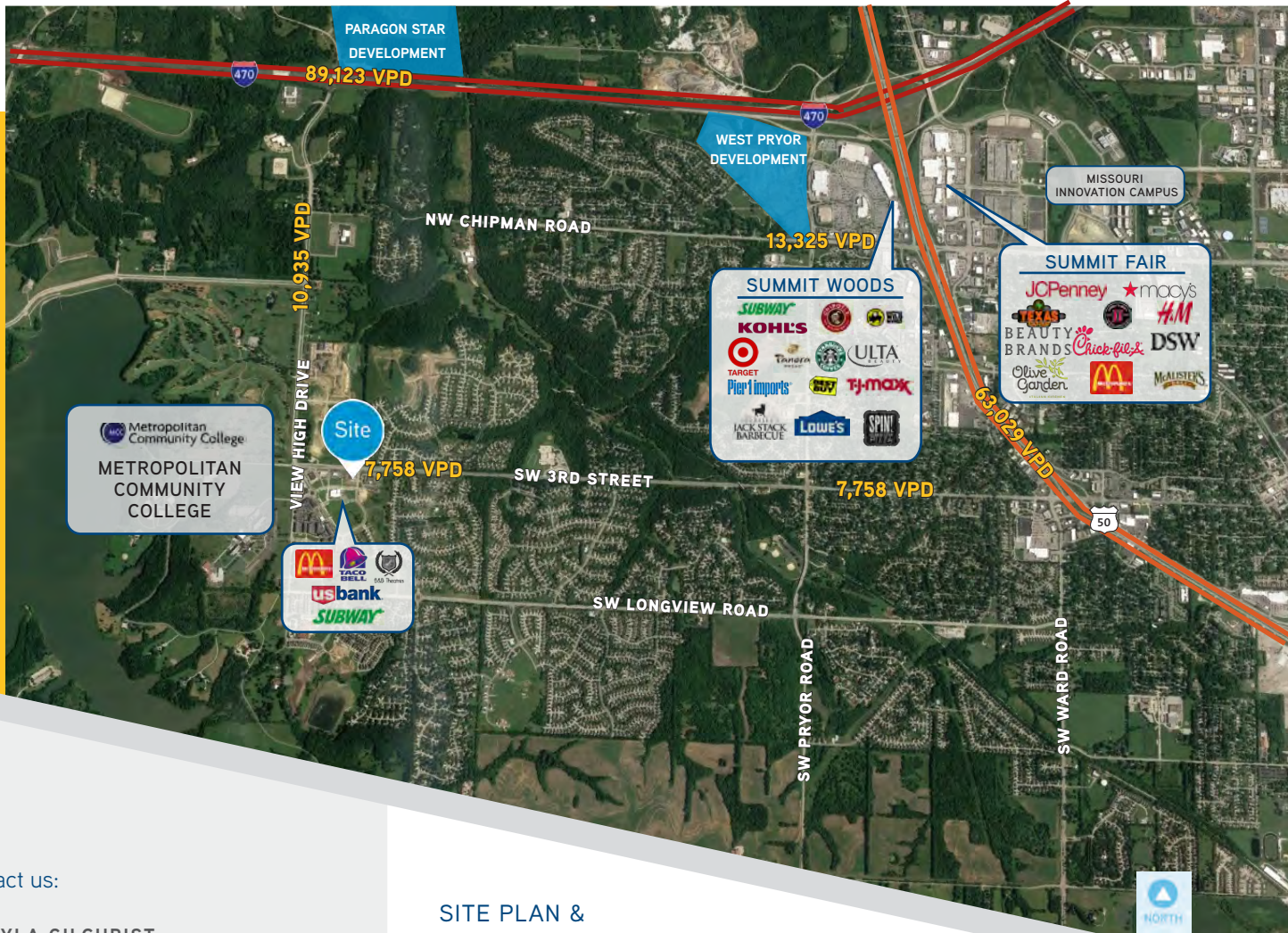
	1-mile	3-mile	5-mile
Estimated Population	4,718	32,263	109,976
Estimated Average Household Income	\$133,250	\$93,266	\$74,063
Estimated Median Household Income	\$119,349	\$84,249	\$65,680
Average Daytime Demographics	1,724	26,535	85,205

- > 0.67-acre pad site available for sale
- > Fully improved and entitled pad site
- > Ideally located in rapidly growing Lee's Summit corridor
- > Pad site of new B&B Movie Theater
- > Adjacent to brand new Taco Bell
- > Last remaining 1st tier site in development
- > Significant multifamily development recently completed in immediate vicinity

COLLIERS INTERNATIONAL | KANSAS CITY  
4520 Main Street, Suite 1000  
Kansas City, MO 64111  
+1 816 531 5303

KAYLA GILCHRIST  
+1 816 556 1149  
kayla.gilchrist@colliers.com

ALLI MORAN  
+1 816 556 1138  
alli.moran@colliers.com



Contact us:

**KAYLA GILCHRIST**  
 +1 816 556 1149  
 kayla.gilchrist@colliers.com

**ALLI MORAN**  
 +1 816 556 1138  
 alli.moran@colliers.com

SITE PLAN &  
 RENDERING



**COLLIERS INTERNATIONAL | KANSAS CITY**  
 4520 MAIN STREET, SUITE 1000  
 KANSAS CITY, MO 64111  
 +1 816 531 5303

This document has been prepared by Colliers International for advertising and general information only. Colliers International makes no guarantees, representations or warranties of any kind, expressed or implied, regarding the information including, but not limited to, warranties of content, accuracy and reliability. Any interested party should undertake their own inquiries as to the accuracy of the information. Colliers International excludes unequivocally all inferred or implied terms, conditions and warranties arising out of this document and excludes all liability for loss and damages arising there from. This publication is the copyrighted property of Colliers International and/or its licensor(s). © 2020. All rights reserved.