

FOR LEASE - 4,000 SF IN A RETAIL ANCHORED CENTER

PLAZA DE CUYAMACA

9711 - 9771 MISSION GORGE ROAD, SANTEE, CA 92071

RETAIL



PROPERTY INFO

- + Located in the heart of Santee at the Cuyamaca (34,051 cars per day) and Mission Gorge (34,870 cars per day) signalized intersection
- + Strong co-anchor tenants: Petco, BevMo!, 99 Cents Only, Grocery Outlet, (Now Open!), Bank of America, Wells Fargo, McDonald's and KFC
- + Ideally positioned at the signalized "main" and "main" intersection of the Santee trade area
- + Excellent visibility and accessibility from Mission Gorge Road & Cuyamaca Street
- + Santee is one of San Diego's fastest growing communities



CONTACT US

BRAD JONES

First Vice President
+1 858 646 4725
brad.jones@cbre.com
Lic. 01211248

DAVE HAGGLUND

Senior Vice President
+1 858 546 4614
dave.hagglund@cbre.com
Lic. 00898280

CBRE

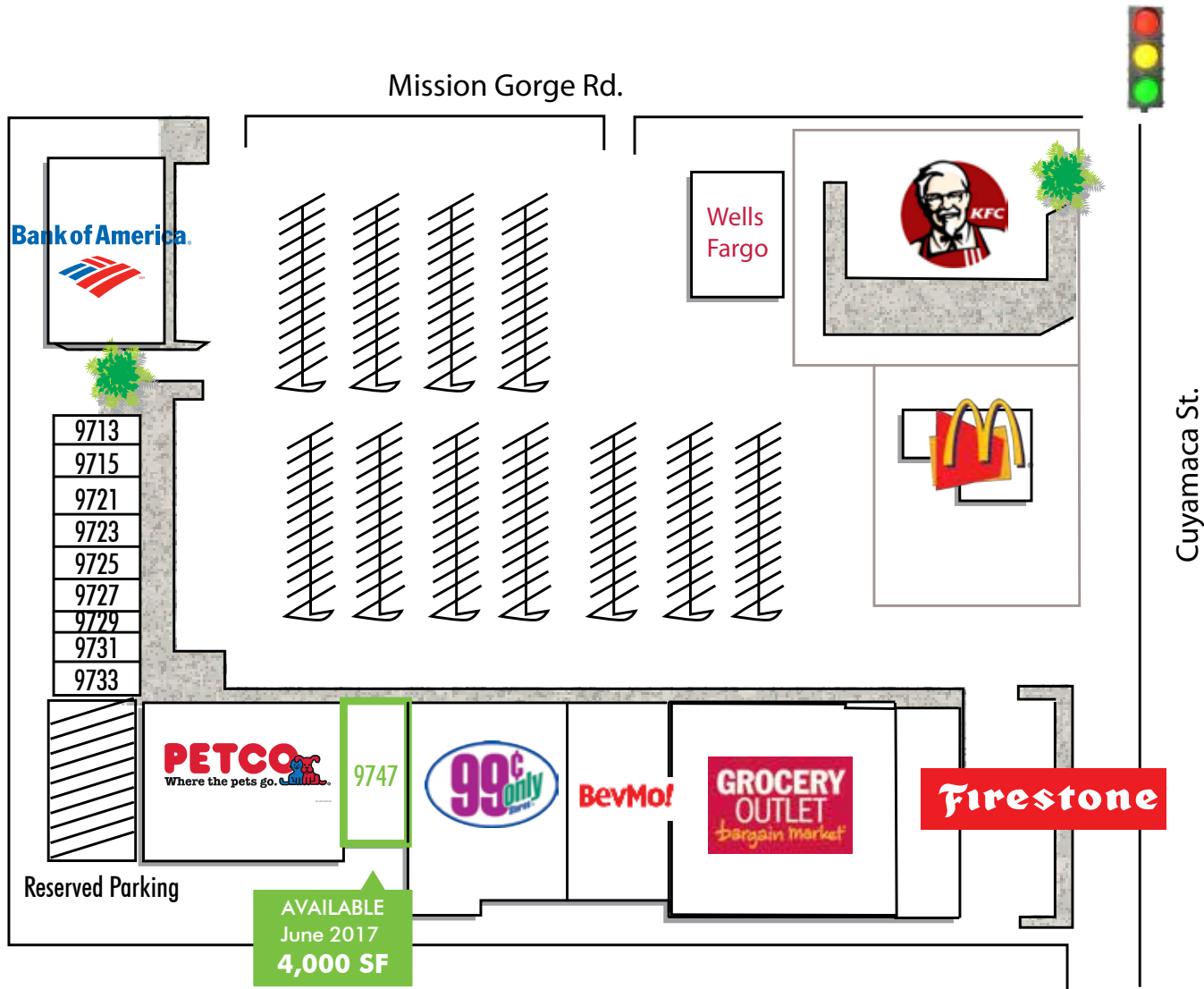
FOR LEASE - 4,000 SF IN A RETAIL ANCHORED CENTER

PLAZA DE CUYAMACA

9711 - 9771 MISSION GORGE ROAD, SANTEE, CA 92071

RETAIL

SITE PLAN



FOR LEASE - 4,000 SF IN A RETAIL ANCHORED CENTER

PLAZA DE CUYAMACA

9711 - 9771 MISSION GORGE ROAD, SANTEE, CA 92071



RETAIL

AVAILABILITY

SUITE	TENANT	SQ. FT
9711	Bank of America	7,920
9713	Submarina	980
9715	Cottonwood Dental	2,397
9721	Beyond Pilates	1,500
9723	Fantastic Sams	1,500
9725	Ruben's Best Mexican	1,500
9727	Optometrist	1,500
9729	Nail Salon	960
9731	Smoke Shop	1,440
9733	Barber Shop	1,220
9745	Petco	14,400
*9747	SD Mattress Man (Available 6/2017)	4,000
9751	99 Cents Only	15,002
9753	BevMo!	9,541
9759	Grocery Outlet	21,440
9763	Firestone	4,400
9771	Wells Fargo	5,473

*DO NOT DISTURB EXISTING TENANT

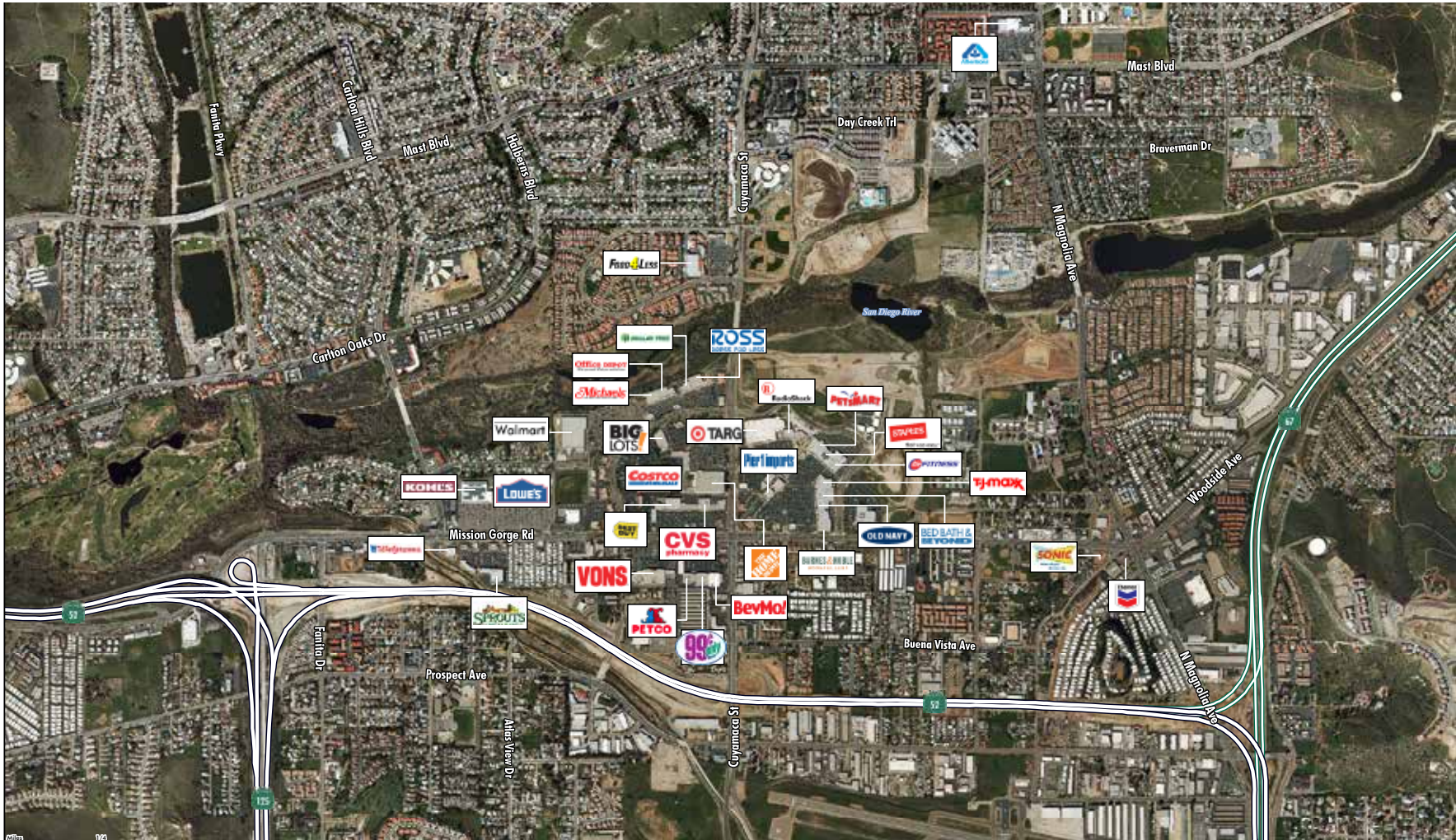
CBRE

FOR LEASE - 4,000 SF IN A RETAIL ANCHORED CENTER
PLAZA DE CUYAMACA

9711 - 9771 MISSION GORGE ROAD, SANTEE, CA 92071

RETAIL

AERIAL



FOR LEASE - 4,000 SF IN A RETAIL ANCHORED CENTER

PLAZA DE CUYAMACA

9711 - 9771 MISSION GORGE ROAD, SANTEE, CA 92071

RETAIL

POPULATION	1 Mile	3 Miles	5 Miles
2016 Population	11,606	102,087	271,602
2021 Population	12,317	107,586	285,352
2010 Population	10,909	97,301	259,708
2000 Population	10,879	95,977	253,152
Percent Pop Change: 2010 to 2016	1.00%	0.77%	0.72%
Percent Pop Change: 2016 to 2021	1.20%	1.05%	0.99%
HOUSEHOLDS			
2016 Households	3,998	37,052	97,976
2021 Households	4,225	38,831	102,372
2010 Households	3,812	35,815	95,135
2000 Households	3,694	34,852	93,844
Percent HH Change: 2010 to 2016	0.77%	0.54%	0.47%
Percent HH Change: 2016 to 2021	1.11%	0.94%	0.88%
Average Household Size	2.82	2.72	2.73
HOUSEHOLD INCOME			
2016 Average Household Income	\$72,009	\$80,620	\$75,268
2021 Average Household Income	\$78,258	\$87,658	\$81,613
2016 Median Household Income	\$56,999	\$64,408	\$57,409
2021 Median Household Income	\$63,131	\$74,967	\$62,978
2016 Per Capita Income	\$27,427	\$29,714	\$27,810
2021 Per Capita Income	\$29,532	\$32,067	\$29,906
2016 Per Capita Income	\$24,005	\$30,327	\$27,525
HOUSING UNITS			
2016 Housing Units	4,198	38,670	103,308
Occupied Units	3,998	37,053	97,977
Vacant Housing Units	200	1,618	5,332
2016 Owner-Occupied Housing Units	2,400	22,932	51,909
2016 Renter-Occupied Housing Units	1,598	14,121	46,068
2016 Median Home Value	\$363,395	\$385,128	\$400,080
2016 Average Home Value	\$380,312	\$398,673	\$417,146

© 2016 CBRE, Inc. This information has been obtained from sources believed reliable. We have not verified it and make no guarantee, warranty or representation about it. Any projections, opinions, assumptions or estimates used are for example only and do not represent the current or future performance of the property. You and your advisors should conduct a careful, independent investigation of the property to determine to your satisfaction the suitability of the property for your needs. Photos herein are the property of their respective owners and use of these images without the express written consent of the owner is prohibited. CBRE and the CBRE logo are service marks of CBRE, Inc. and/or its affiliated or related companies in the United States and other countries. All other marks displayed on this document are the property of their respective owners.

