



Flex Space for Lease

459 Somerset Street

SOMERSET, NJ

Building Size: +/-21,000 SF; 3 units

Location: Corner of Route 27 and Main Street; Close to Routes 1 and 18; just outside New Brunswick

Available: Unit 3: +/- 5,000 SF on August 1, 2026

Details:

- Off-street parking lot
- Air conditioning in office area
- 3 drive doors with interior docks

For Lease: \$15.25 PSF NNN

Patrick Masi, RPA

Senior Vice President
848-244-4454 office
pmasi@weichertcommercial.com

David R. Williams

Senior Vice President
201-218-0658 cell
drwilliams@weichertcommercial.com

Exclusive Broker

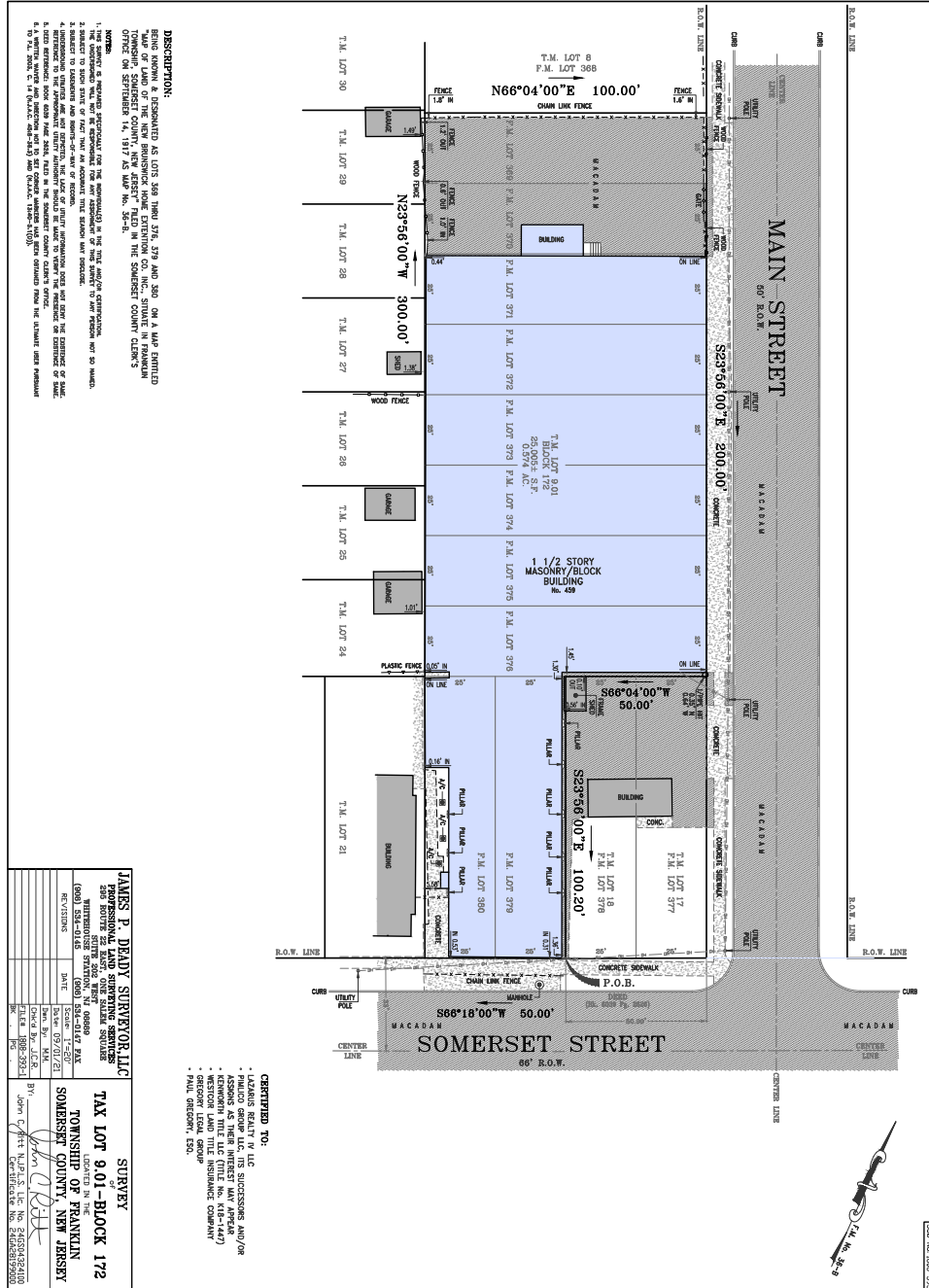
Weichert | Commercial
Brokerage, Inc.

123 Lincoln Highway • Edison, NJ • 732-494-0778 • weichertcommercial.com

No warranty or representation, express or implied is made as to the accuracy of the information contained herein, and same is submitted subject to errors, omissions, change of price, rental or other conditions, withdrawal without notice and to any special listing conditions imposed by our principals.

459 Somerset Street

Survey



123 Lincoln Highway • Edison, NJ • 732-494-0778 • weichertcommercial.com

No warranty or representation, express or implied is made as to the accuracy of the information contained herein, and same is submitted subject to errors, omissions, change of price, rental or other conditions, withdrawal without notice and to any special listing conditions imposed by our principals.

459 Somerset Street

Demographics

