

FOR LEASE > NEW MODEL SUITES PROFESSIONAL OFFICE CONDOMINIUM

3557 ALLEN ROAD, BAKERSFIELD, CA 93314



**COMING
SOON!!**

CAMERON MAHONEY
SENIOR VICE PRESIDENT | PRINCIPAL
CENTRAL CALIFORNIA
OFFICE PROPERTIES TEAM
LICENSE NUMBER 01937802
DIR: 661 631 3814
cameron.mahoney@colliers.com

COLLIERS INTERNATIONAL
10000 Stockdale Highway
Suite 102
Bakersfield, CA 93311
www.colliers.com/bakersfield



FOR LEASE > NEW MODEL SUITES

PROFESSIONAL OFFICE CONDOMINIUM

PROPERTY INFORMATION

3557 ALLEN ROAD, BAKERSFIELD, CA 93314

3557 Allen Road is an approximately 5,737 square foot brand new professional office condominium building, located in one of Bakersfield's newest professional office condominium projects commonly known as Westside Business Park. The property is situated in Northwest Bakersfield off the NWC of Meacham Rd. & Allen Rd. Limited availability of like-kind product available in sub-market that will have brand new model suites ready to occupy in the Spring of 2020.

AVAILABLE

Approximately 1,435 SF to 2,870 SF

LEASE RATE

Contact Agent For More Information!!

*Spaces will be delivered in turnkey condition based on floor plan on attached pages

*Ready to occupy Spring 2020

HIGHLIGHTS

- > Can accommodate one or two tenants (1,435 SF or 2,870 SF)
- > Conventional single tenant layout includes waiting/reception area, eleven (11) private offices, conference room, two (2) bullpen areas, break room, storage, IT room and two (2) restrooms
- > Conventional two tenant layout includes waiting/reception area, four (4) private offices, conference room, one (1) bullpen area, break room, storage, IT room and two (2) restrooms
- > Brand-new first generation model suites
- > Suites separately metered for utilities
- > On-site private parking
- > Excellent street visibility
- > Building and monument signage available



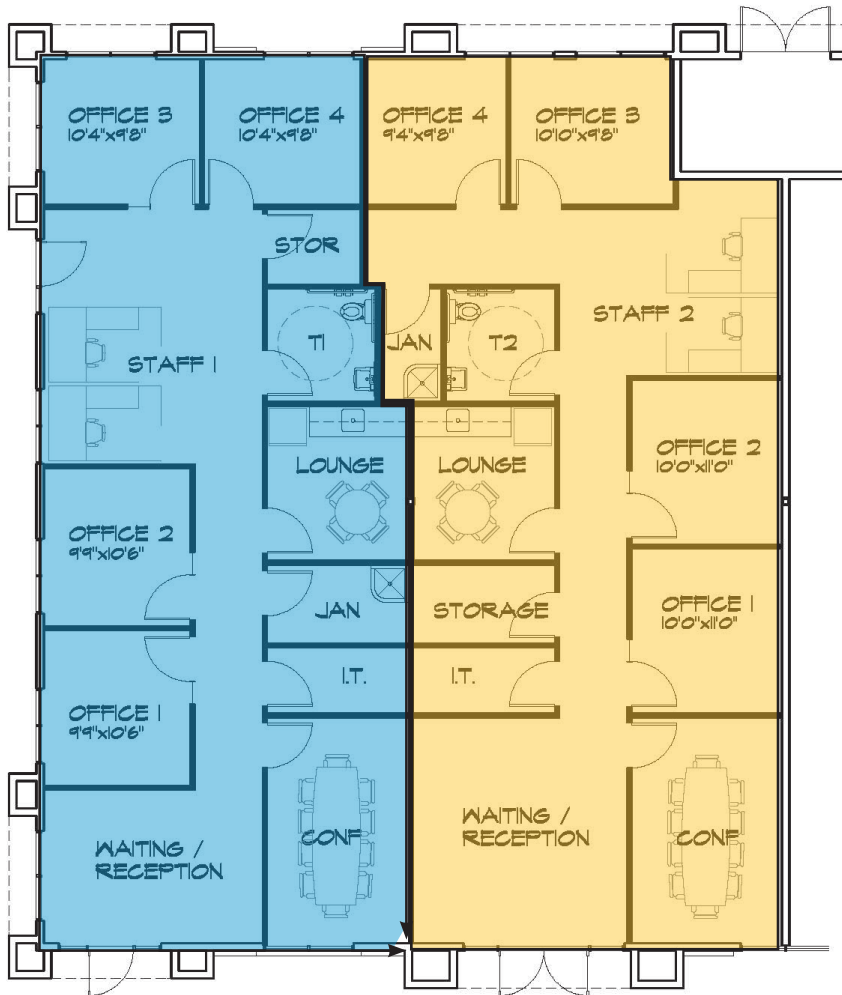
FOR LEASE > NEW MODEL SUITES

PROFESSIONAL OFFICE CONDOMINIUM

FLOOR PLAN

3557 ALLEN ROAD, BAKERSFIELD, CA 93314

TWO TENANT CONFIGURATION



SINGLE TENANT CONFIGURATION



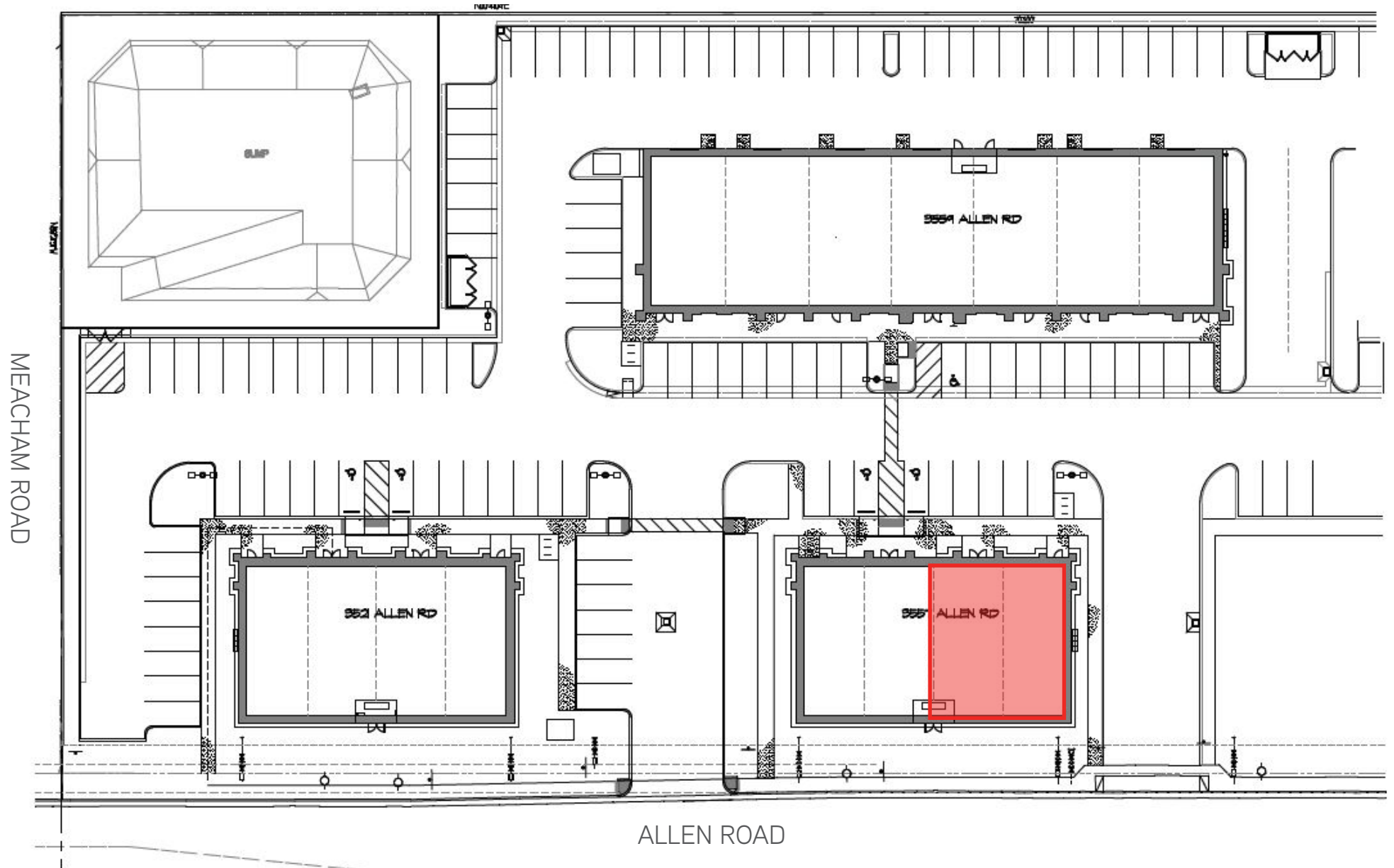
SUITE A: +/-1,435 SF

SUITE B: +/-1,435 SF

SUITE A: +/-2,870 SF

FOR LEASE > NEW MODEL SUITES PROFESSIONAL OFFICE CONDOMINIUM SITE PLAN

3557 ALLEN ROAD, BAKERSFIELD, CA 93314



FOR LEASE > NEW MODEL SUITES PROFESSIONAL OFFICE CONDOMINIUM AERIAL

3557 ALLEN ROAD, BAKERSFIELD, CA 93314

CONTACT US

CAMERON MAHONEY
SENIOR VICE PRESIDENT | PRINCIPAL
CENTRAL CALIFORNIA
OFFICE PROPERTIES TEAM
LICENSE NUMBER 01511739
DIR: 661 631 3814
cameron.mahoney@colliers.com

COLLIERS INTERNATIONAL
10000 Stockdale Highway, Suite 102
Bakersfield, CA 93311
www.colliers.com/bakersfield

