

# INVESTMENT PROPERTY SERVICES, INC.

## OFFICE SPACE FOR LEASE 1201 N. PACIFIC AVENUE SUITE 103 GLENDALE, CA 91202

*Commercial,  
Investment, and  
Industrial Brokerage*

601 E. Glenoaks Boulevard  
Suite 206  
Glendale, CA 91207  
CalBRE No. 00862712  
Phone: (818) 956-7006  
Fax: (818) 956-1517

For more information contact:

Joe Stitick, CCIM

CalBRE No. 00527544

[jstitick@investmentpropertysvcs.com](mailto:jstitick@investmentpropertysvcs.com)



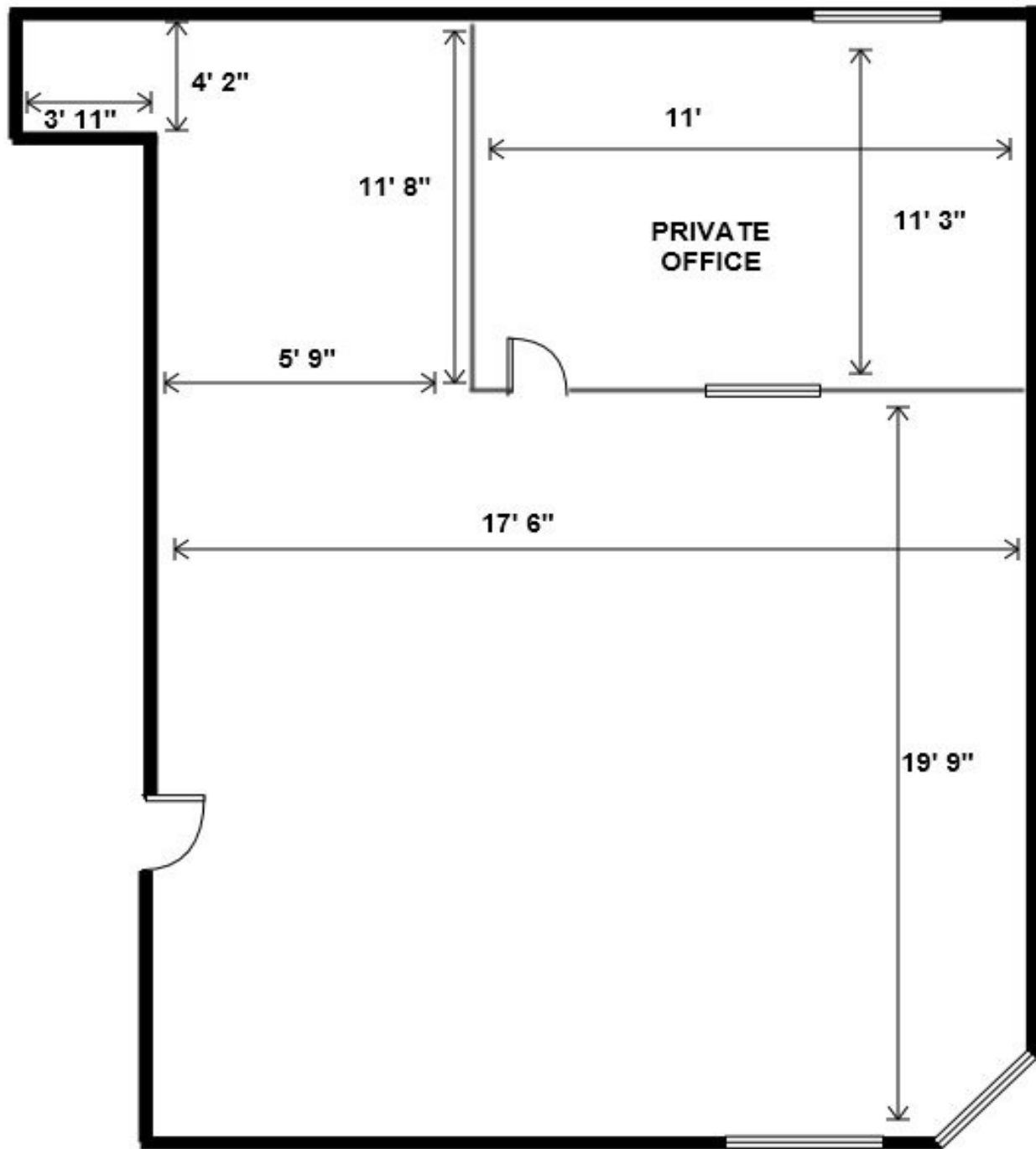
AS INDIVIDUAL MEMBERSHIP



- **684 (±) SF, \$1,559 Monthly, Suite 103**
- Modified Gross: Tenant pays for own directly metered electrical & gas service and suite interior janitorial service.
- Three to five year term, Options to Extend available
- Two (2) Reserved Parking Spaces: \$75 per month for both spaces
- Ground floor, large office space
- Monument signage available at \$25 per month
- Access to common area kitchen
- New ADA restrooms installed in building first quarter, 2016
- Close proximity to Starbucks, CitiBank, Post Office, local shops and restaurants with easy access to 134 Freeway
- Prospected Tenant should contact City of Glendale Permit Services regarding their proposed use at 818-548-3200.

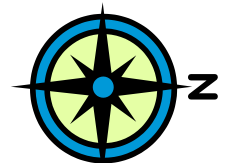
# INVESTMENT PROPERTY SERVICES, INC.

1201 N. PACIFIC AVENUE, SUITE 103  
GLENDALE, CA 91202

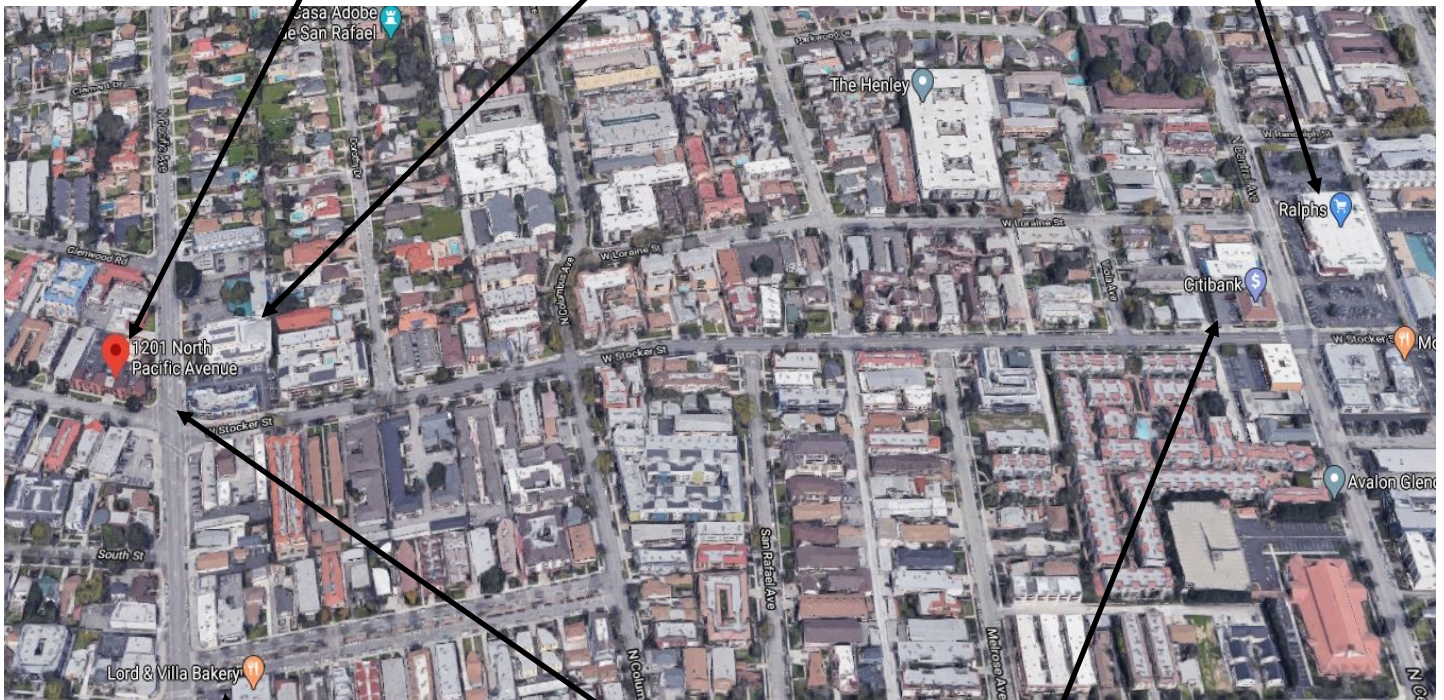


FOR ILLUSTRATION PURPOSES ONLY. NOT TO SCALE

This information has been obtained from sources believed reliable. While we do not doubt its accuracy, we have not verified information and make no guarantee or representation about it. It is your responsibility to independently confirm its accuracy and completeness.



# INVESTMENT PROPERTY SERVICES, INC.



PACIFIC AVENUE



shutterstock.com • 570237826

