



# OFFICE SPACE FOR SUBLEASE

12802 Science Dr, Orlando, FL 32826

AVAILABLE IMMEDIATELY  
Three-Story Class "A" Office  
Building for Sublease

- Class A Sublease offering; Lease Expiration December 31, 2028
- Can be subleased in total or in part
- FF&E available
- Located within the CFL Research Park, directly adjacent to the NAWCTSD facility
- **Only space within the building already constructed for complete government security clearance/communications**
- First floor lobby and branded boardroom for use and lobby presence available
- Ready for immediate move-in and "turn-key" occupancy
- Direct access to SR 408 within two minutes
- Exceptional amenities including fitness center, large tenant breakroom/lounge with exterior patio, showers in first floor restrooms, and executive board room and conferencing.



### REDUCED RATE:

\$20.00 PSF FS



### AVAILABLE SPACE:

Up to 12,493 ± SF



### PARKING:

5.25/1,000



### TRAFFIC COUNTS:

On N. Alafaya Trail  
49,500± vehicles/day



### YEAR BUILT:

2013



JOSH SMITH, SIOR

jsmith@harbertrealty.com | 407.739.8602

DAMIEN MADSEN

dmadsen@harbertrealty.com | 407.256.2844

**For More Information: HarbertRealty.com**  
400 S Park Ave, Suite 225, Winter Park, FL 32789

The information contained herein has been obtained from sources deemed reliable, however, HRS makes no guarantees, warranties or representation as to its completeness or accuracy thereof. The presentation of this property is submitted subject to errors, omissions, change of price or conditions, prior to sale or lease or withdrawal without notice.

# OFFICE SPACE FOR SUBLEASE

12802 Science Dr, Orlando, FL 32826

BUILDING EXTERIOR



HARBERT  
REALTY SERVICES

JOSH SMITH, SIOR  
jsmith@harbertrealty.com | 407.739.8602

DAMIEN MADSEN  
dmadsen@harbertrealty.com | 407.256.2844

For More Information: [HarbertRealty.com](http://HarbertRealty.com)  
400 S Park Ave, Suite 225, Winter Park, FL 32789

The information contained herein has been obtained from sources deemed reliable, however, HRS makes no guarantees, warranties or representation as to its completeness or accuracy thereof. The presentation of this property is submitted subject to errors, omissions, change of price or conditions, prior to sale or lease or withdrawal without notice.

# OFFICE SPACE FOR SUBLEASE

12802 Science Dr, Orlando, FL 32826

AERIAL VIEW



## DRIVE TIMES

**3 minutes**  
to SR 408

**3 minutes**  
to UCF

**18 minutes**  
to I-4

**20 minutes**  
to Orlando International  
Airport (MCO)

## DEMOGRAPHICS

### POPULATION

1 Mile	3 Miles	5 Miles
20,741	109,984	235,581

### EMPLOYEES

1 Mile	3 Miles	5 Miles
8,022	34,457	61,148

### HOUSEHOLDS

1 Mile	3 Miles	5 Miles
4,902	35,828	79,938

### AVG HH INCOME

1 Mile	3 Miles	5 Miles
\$66,085	\$94,488	\$112,601



**HARBERT**  
REALTY SERVICES

**JOSH SMITH, SIOR**  
jsmith@harbertrealty.com | 407.739.8602

**DAMIEN MADSEN**  
dmadsen@harbertrealty.com | 407.256.2844

**For More Information: HarbertRealty.com**  
400 S Park Ave, Suite 225, Winter Park, FL 32789

The information contained herein has been obtained from sources deemed reliable, however, HRS makes no guarantees, warranties or representation as to its completeness or accuracy thereof. The presentation of this property is submitted subject to errors, omissions, change of price or conditions, prior to sale or lease or withdrawal without notice.

# OFFICE SPACE FOR SUBLEASE

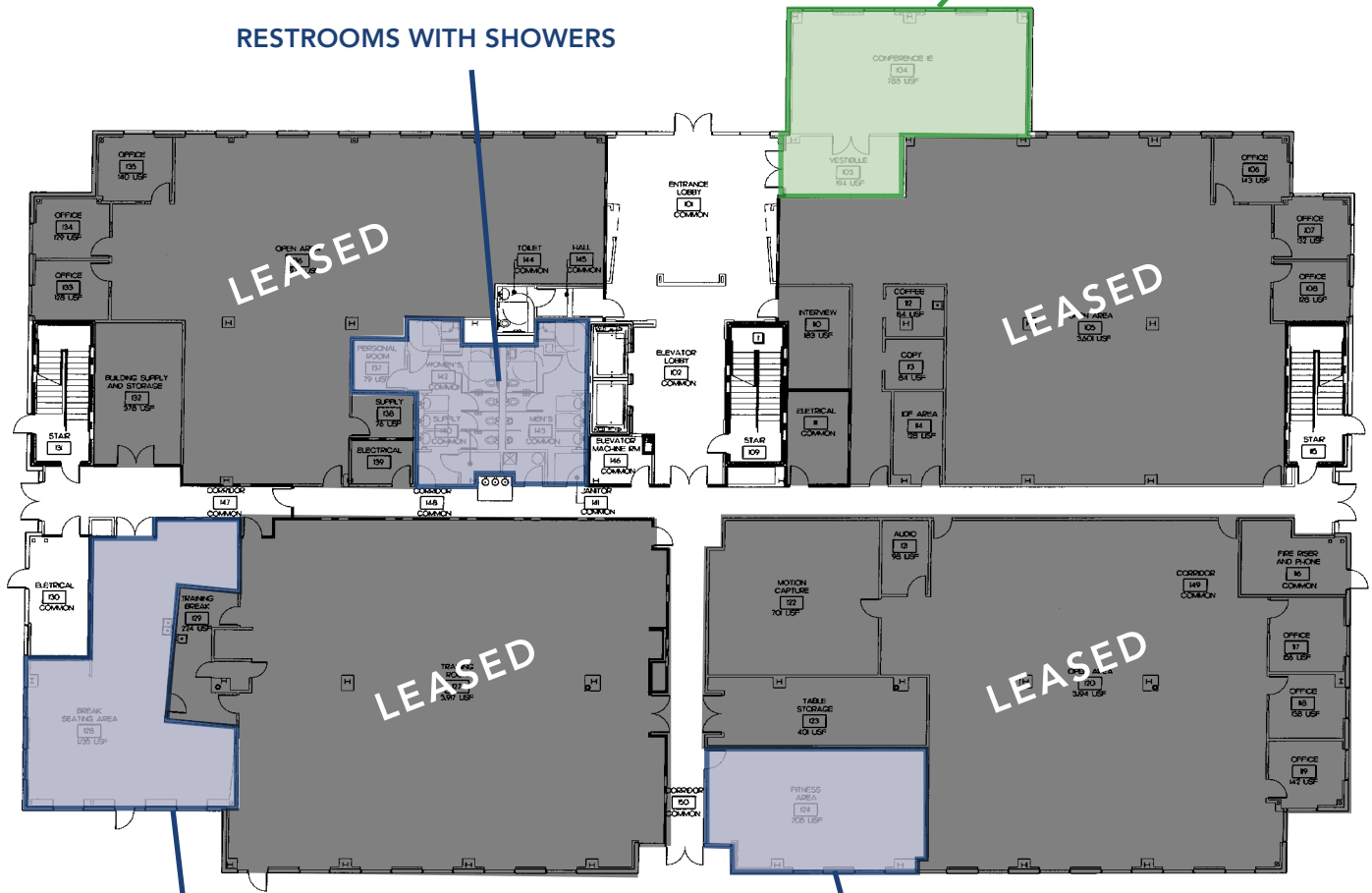
12802 Science Dr, Orlando, FL 32826

# FLOORPLAN

## FIRST FLOOR: BUILDING AMENITIES

CORPORATE BOARD ROOM &  
VESTIBULE AVAILABLE  
1,130 SF

RESTROOMS WITH SHOWERS



TENANT LOUNGE  
SERVING ALL TENANTS

TENANT FITNESS CENTER  
FOR ALL TENANTS



HARBERT  
REALTY SERVICES

JOSH SMITH, SIOR  
jsmith@harbertrealty.com | 407.739.8602

DAMIEN MADSEN  
dmadsen@harbertrealty.com | 407.256.2844

For More Information: [HarbertRealty.com](http://HarbertRealty.com)  
400 S Park Ave, Suite 225, Winter Park, FL 32789

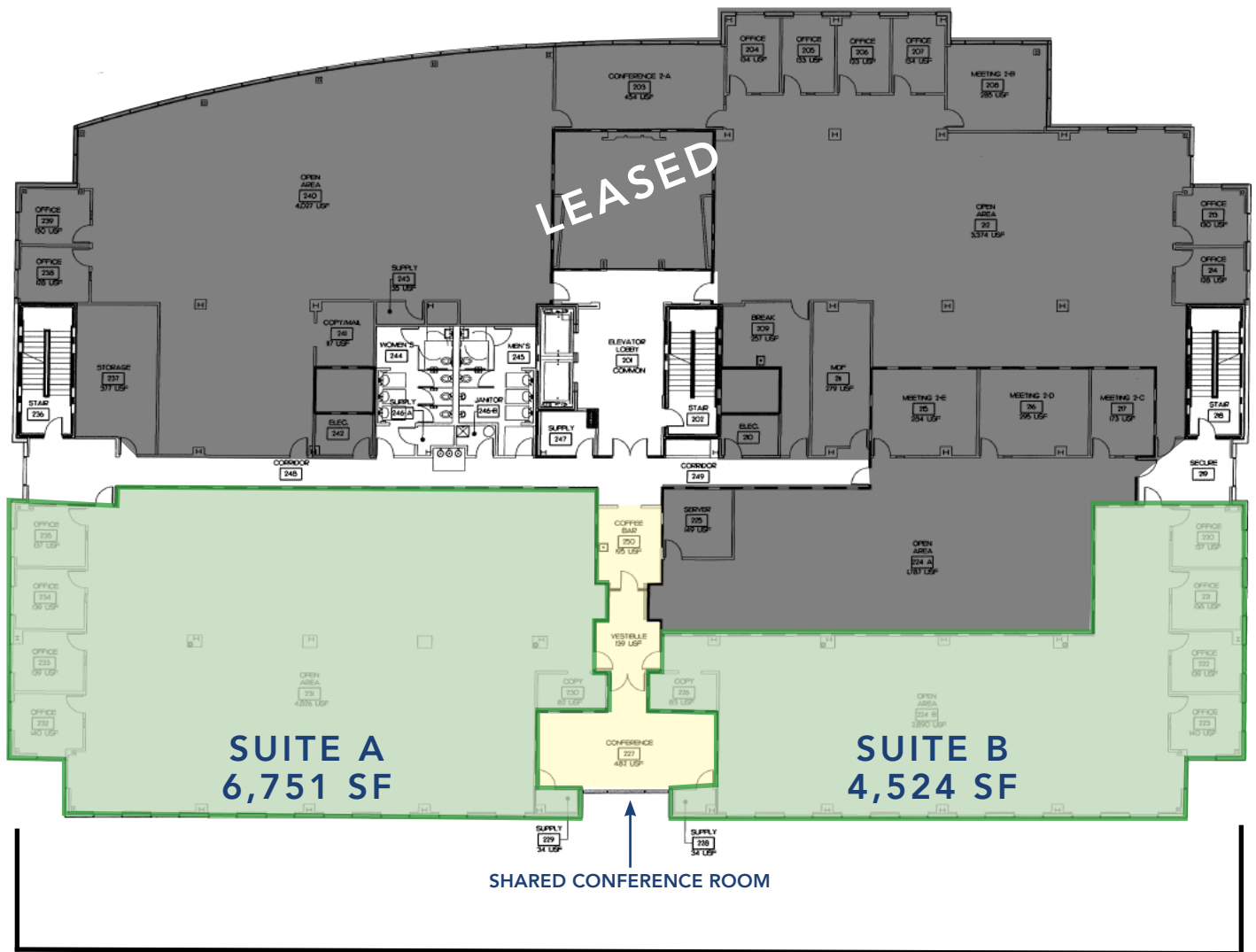
The information contained herein has been obtained from sources deemed reliable, however, HRS makes no guarantees, warranties or representation as to its completeness or accuracy thereof. The presentation of this property is submitted subject to errors, omissions, change of price or conditions, prior to sale or lease or withdrawal without notice.

# OFFICE SPACE FOR SUBLEASE

12802 Science Dr, Orlando, FL 32826

# FLOORPLAN

## SECOND FLOOR: AVAILABLE SUITES



TOTAL COMBINED AVAILABLE SF:

11,363 SF



HARBERT  
REALTY SERVICES

JOSH SMITH, SIOR  
jsmith@harbertrealty.com | 407.739.8602

DAMIEN MADSEN  
dmadsen@harbertrealty.com | 407.256.2844

For More Information: [HarbertRealty.com](http://HarbertRealty.com)  
400 S Park Ave, Suite 225, Winter Park, FL 32789

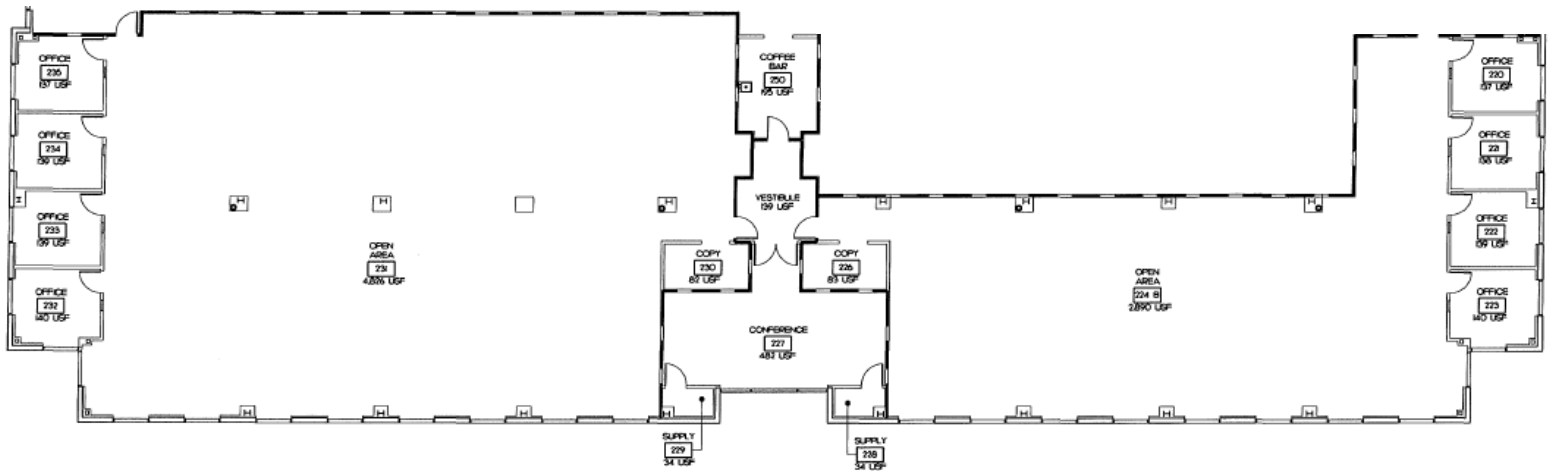
The information contained herein has been obtained from sources deemed reliable, however, HRS makes no guarantees, warranties or representation as to its completeness or accuracy thereof. The presentation of this property is submitted subject to errors, omissions, change of price or conditions, prior to sale or lease or withdrawal without notice.

# OFFICE SPACE FOR SUBLEASE

12802 Science Dr, Orlando, FL 32826

## FLOORPLAN

### SECOND FLOOR: AVAILABLE SUITES



**TOTAL COMBINED AVAILABLE SF:**

**11,363 SF**



**HARBERT**  
REALTY SERVICES

**JOSH SMITH, SIOR**  
jsmith@harbertrealty.com | 407.739.8602

**DAMIEN MADSEN**  
dmadsen@harbertrealty.com | 407.256.2844

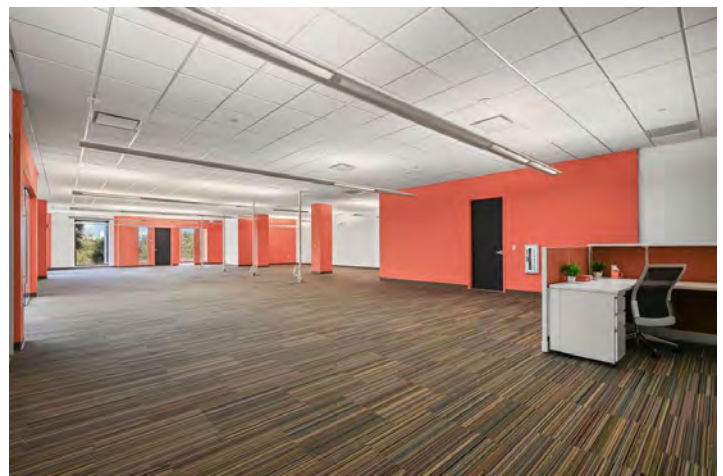
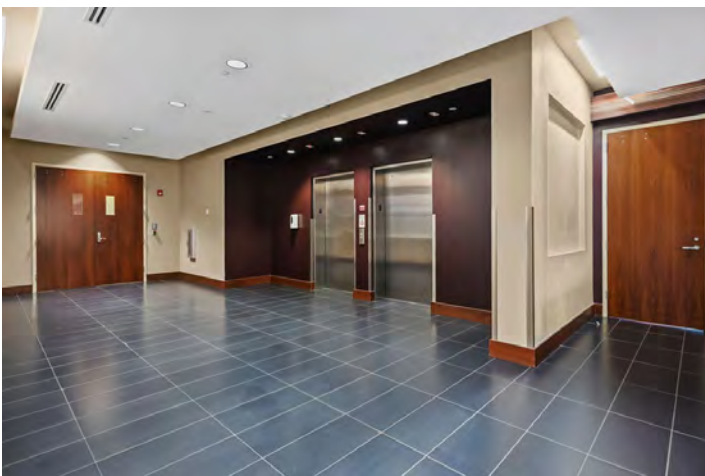
**For More Information: HarbertRealty.com**  
400 S Park Ave, Suite 225, Winter Park, FL 32789

The information contained herein has been obtained from sources deemed reliable, however, HRS makes no guarantees, warranties or representation as to its completeness or accuracy thereof. The presentation of this property is submitted subject to errors, omissions, change of price or conditions, prior to sale or lease or withdrawal without notice.

# OFFICE SPACE FOR SUBLEASE

12802 Science Dr, Orlando, FL 32826

## INTERIOR & AMENITIES



JOSH SMITH, SIOR  
jsmith@harbertrealty.com | 407.739.8602

DAMIEN MADSEN  
dmadsen@harbertrealty.com | 407.256.2844

**For More Information: [HarbertRealty.com](http://HarbertRealty.com)**  
400 S Park Ave, Suite 225, Winter Park, FL 32789

The information contained herein has been obtained from sources deemed reliable, however, HRS makes no guarantees, warranties or representation as to its completeness or accuracy thereof. The presentation of this property is submitted subject to errors, omissions, change of price or conditions, prior to sale or lease or withdrawal without notice.