

SALE PRICE: \$342,500

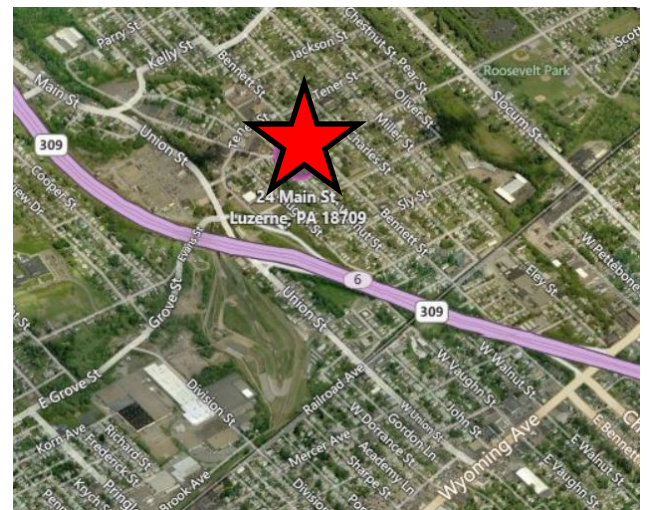


24 MAIN STREET, LUZERNE, PA 18709

Medical office building in excellent condition featuring 5 exam rooms, 2 doctor's offices, 1 trauma room, 3 restrooms, 1 nurses area, 1 central office with reception, large waiting room and staff lounge. The lower level has an office with a restroom with owners storage and mechanical area. There is also a 2-car garage.

PROPERTY DETAILS:

- 5,627 SF+/-
- 0.27+/- Acres
- PIN: G9NE1007002-41
- Public Utilities
- Gas Forced Hot Air Heat
- Central A/C
- Vinyl/Block Exterior
- Shingle Roof
- Wood Flooring
- 11 Parking Spaces (Includes 1 Handicap)
- 2-Car Garage
- 4 Restrooms
- Two 200 amp Electrical Panels
- 63 ft. Frontage
- Zoned B-2
- 2016 Taxes - \$8,319



For Information Contact:

Al Guari, Vice President-Brokerage

aguari@mericle.com

Cell: 570.499.2889 * Fax: 570.704.0606

570.823.1100
mericle.com



East Mountain Corporate Center
100 Baltimore Drive
Wilkes-Barre, PA 18702

Developing Northeastern Pennsylvania's I-81 Corridor Since 1985



