



FOR LEASE

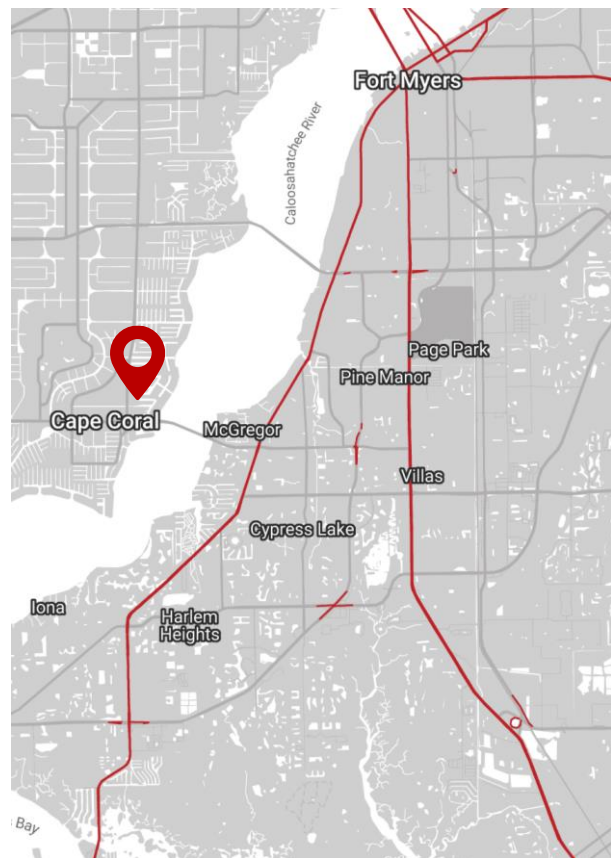
PROFESSIONAL OFFICE – 1,000 +/- SF

4524 SE 16th PL., Suite 1, Cape Coral, FL 33904

Turnkey professional office space located in Cape Coral one block East of Del Prado Boulevard and half a mile North of Cape Coral Parkway and Downtown Cape Coral with easy access to Del Prado Boulevard with signalized traffic light at SE 46th Street.

PROPERTY DETAILS

Available Space:	1,000 +/- SF
Lease Rate:	\$16.50 PSF, Gross
Monthly Rent:	\$1,375.00 plus Sales Tax
Zoning:	SC (City of Cape Coral)
Building Size:	9,540 +/- SF
Year Built:	1991



BRYAN BURCHERS
239-699-3120
bryan@mayhughcommercial.com

CHASE MAYHUGH, SIOR, CCIM
239-898-9685
chase@mayhughcommercial.com

13690 Eagle Ridge Dr.
Fort Myers, FL 33912
MayhughCommercial.com

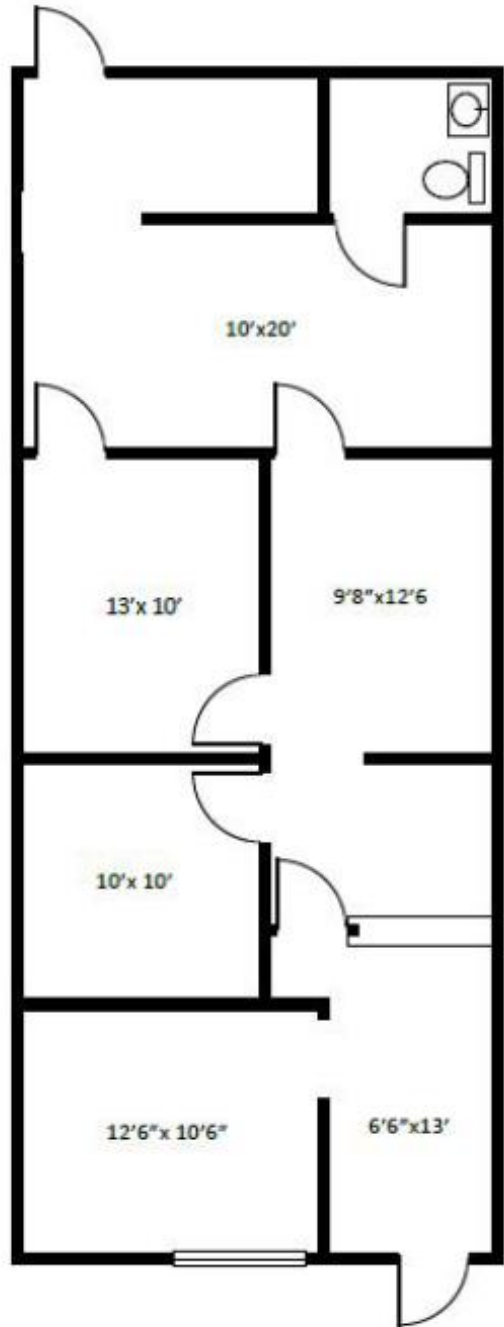
PROFESSIONAL OFFICE – 1,000 +/- SF

4524 SE 16th PL., Suite 1, Cape Coral, FL 33904

PHOTOS



FLOOR PLAN



The statements, information and figures presented herein in this offering, while not warranted or guaranteed, are secured from a source we believe to be reliable. Subject to prior sale, withdrawal and price change without notice.



BRYAN BURCHERS
239-699-3120
bryan@mayhughcommercial.com

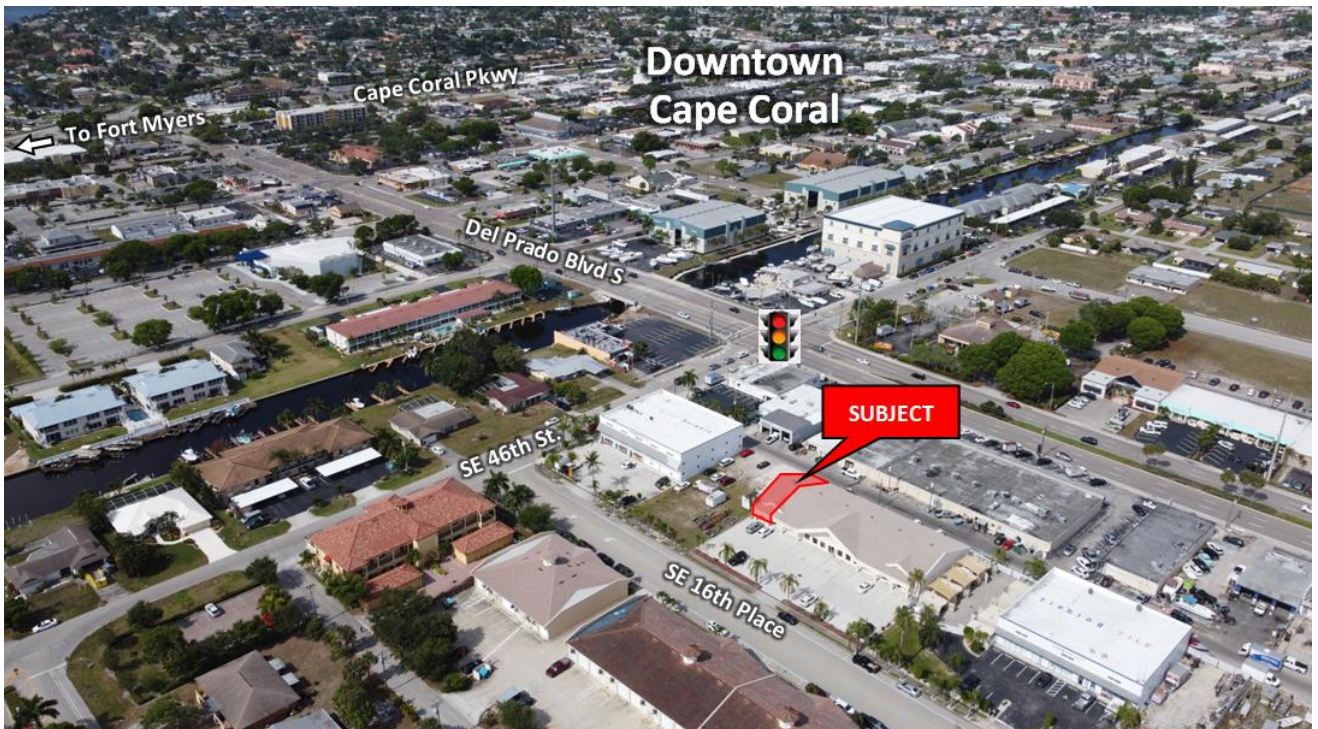
CHASE MAYHUGH, SIOR, CCIM
239-898-9685
chase@mayhughcommercial.com

13690 Eagle Ridge Dr.
Fort Myers, FL 33912
MayhughCommercial.com

PROFESSIONAL OFFICE – 1,000 +/- SF

4524 SE 16th PL., Suite 1, Cape Coral, FL 33904

PHOTOS



The statements, information and figures presented herein in this offering, while not warranted or guaranteed, are secured from a source we believe to be reliable. Subject to prior sale, withdrawal and price change without notice.



BRYAN BURCHERS
239-699-3120
bryan@mayhughcommercial.com

CHASE MAYHUGH, SIOR, CCIM
239-898-9685
chase@mayhughcommercial.com

13690 Eagle Ridge Dr.
Fort Myers, FL 33912
MayhughCommercial.com