



±4,427 SF
DIVISIBLE TO ±1,200 SF & ±3,227 SF
**DOWNTOWN SAN MATEO
HISTORIC OFFICE SPACE**



Marc Pope
Vice Chairman
+1 650 401 2131
marc.pope@cushwake.com
LIC #01474483

Nick Waldsmith
Senior Associate
+1 650 320 0244
nick.waldsmith@cushwake.com
LIC #02148004

cushmanwakefield.com | 1350 Bayshore Hwy., Suite 900, Burlingame, CA
main +1 650 347 3700 | fax +1 650 347 4307

Cushman & Wakefield Copyright 2018. No warranty or representation, express or implied, is made to the accuracy or completeness of the information contained herein, and same is submitted subject to errors, omissions, change of price, rental or other conditions, withdrawal without notice, and to any special listing conditions imposed by the property owner(s). As applicable, we make no representation as to the condition of the property (or properties) in question.

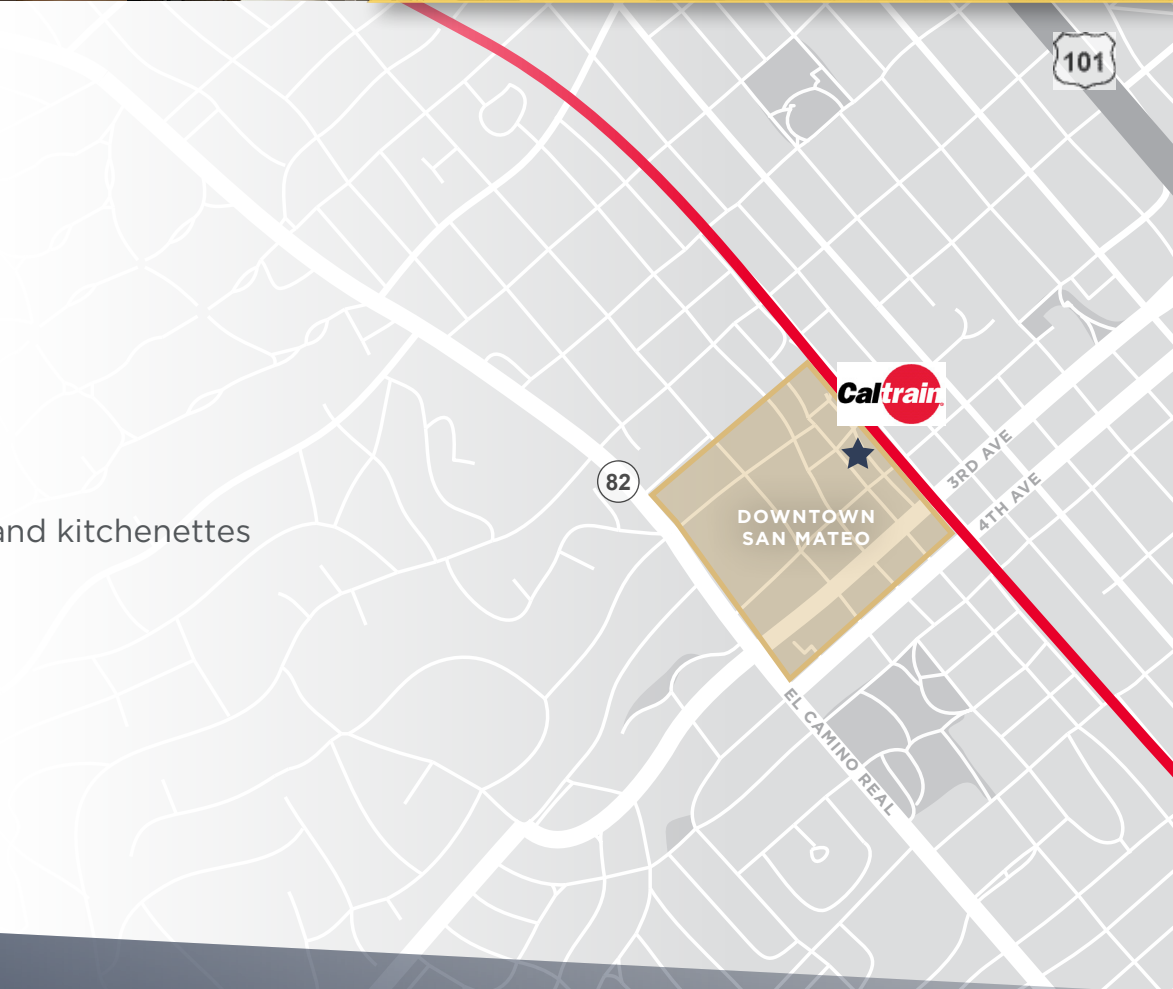
FOR LEASE
119 SOUTH B STREET
SAN MATEO, CALIFORNIA



119 SOUTH B STREET
SAN MATEO, CALIFORNIA

PROPERTY HIGHLIGHTS

- **±4,724 SF Office Space Available**
- Divisible to ±1,200 SF & ±3,227 SF
- Historic Odd Fellows Building with period detail
- Hardwood floors throughout with high ceilings, exposed brick and excellent natural light
- Predominantly open plans with conference rooms and kitchenettes
- Abundant amenities within walking distance
- 750 feet to San Mateo Caltrain Station



Marc Pope
Vice Chairman
+1 650 401 2131
marc.pope@cushwake.com
LIC #01474483

Nick Waldsmith
Senior Associate
+1 650 320 0244
nick.waldsmith@cushwake.com
LIC #02148004

1350 Bayshore Hwy., Suite 900, Burlingame, CA
main +1 650 347 3700 | fax +1 650 347 4307 | cushmanwakefield.com



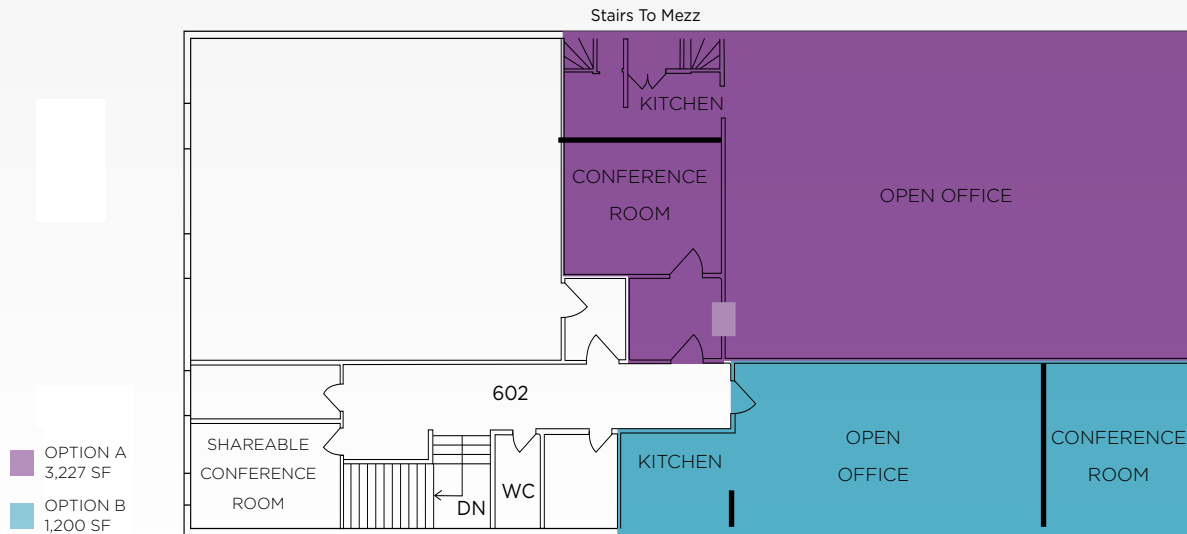


119 SOUTH B STREET
SAN MATEO, CALIFORNIA

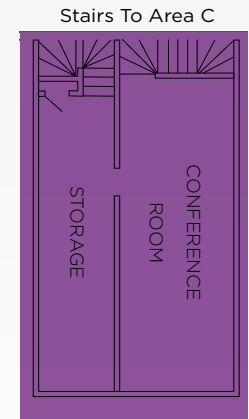
SITE FLOOR PLAN

FIRST FLOOR

B STREET



SECOND FLOOR



Marc Pope
Vice Chairman
+1 650 401 2131
marc.pope@cushwake.com
LIC #01474483

Nick Waldsmith
Senior Associate
+1 650 320 0244
nick.waldsmith@cushwake.com
LIC #02148004

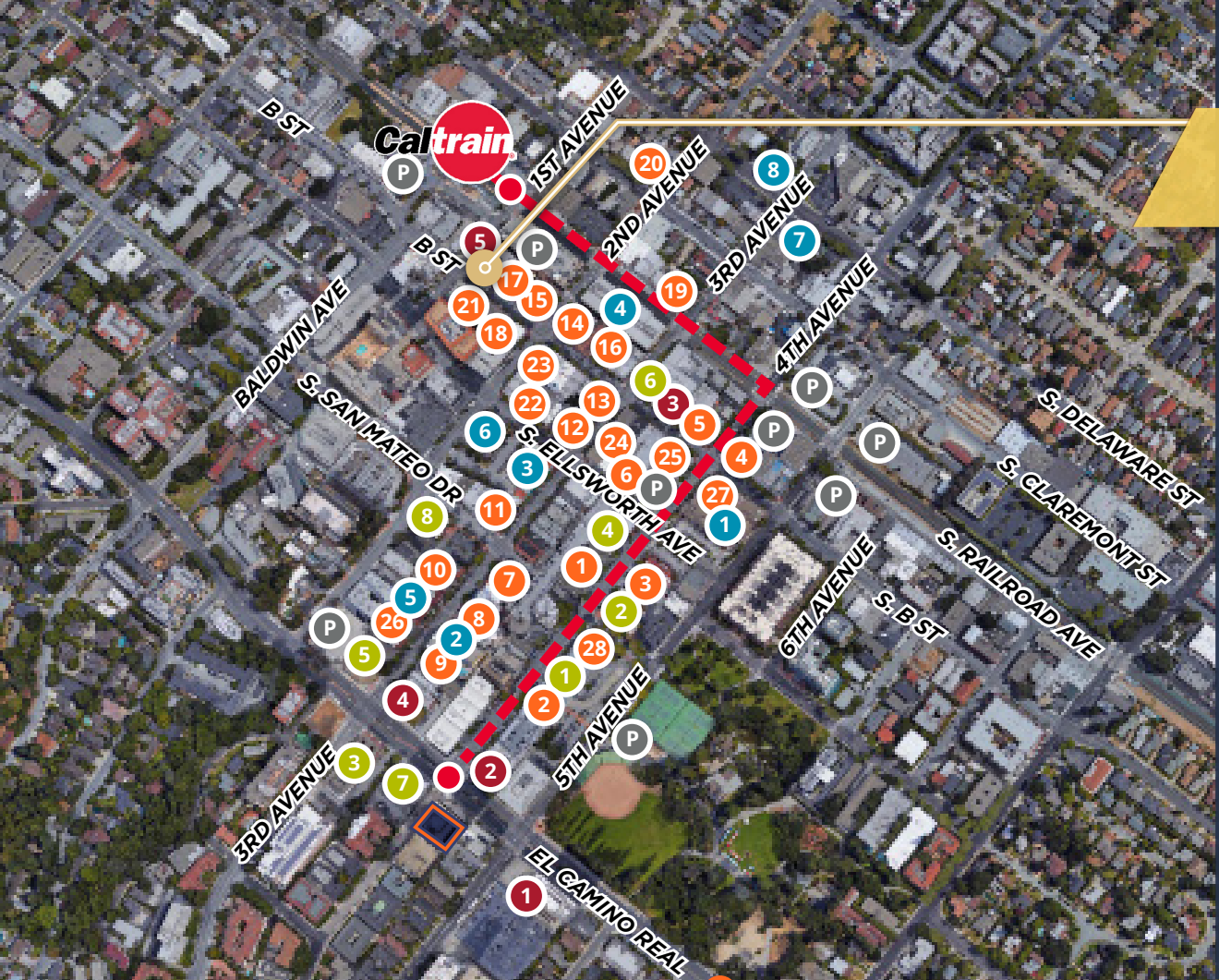
1350 Bayshore Hwy., Suite 900, Burlingame, CA
main +1 650 347 3700 | fax +1 650 347 4307 | cushmanwakefield.com



119 SOUTH B STREET SAN MATEO, CALIFORNIA

AMENITIES

- 150+ Food and Beverage Establishments
- Caltrain Station (10 Minutes)
- Fitness Centers (Equinox, 24 Hour Fitness)
- Century 12 Movie Theater
- Multiple Public Parking Garages
- Draeger's Supermarket
- Central Park
- Walk Score - 94 - "Walker's Paradise"



RESTAURANTS

- | | | |
|-------------------------|--------------------------------|------------------------|
| 1 Central Park Bistro | 9 Three Restaurant & Bar | 17 Philz Coffee |
| 2 Jamba Juice | 10 Amici's East Coast Pizzeria | 18 Vault 164 |
| Rubio's | NI-MO Japanese Cuisine | 19 Red Crawfish |
| Starbucks | 3rd Ave Sports Bar & Grill | 20 Kokko |
| Noah's Bagels | Masu Japanese Bistro | 21 CREAM |
| 3 Pizza My Heart | 11 Shabuway | 22 Himawari |
| Hummus | Vespucci Ristorante Italiano | Little Sheep |
| Little Sichuan | 12 Roti Indian Bistro | 23 Izakaya Mai |
| Tomatina | Ajisen Ramen | 24 Sushi Sam's Edomata |
| 4 Amour Amour Cafe | 13 Peet's Coffee & Tea | North Beach Pizza |
| Pancho Villa Taqueria | 14 Kingfish | 25 Pausa Bar & Cookery |
| 6 Gyu-Kaku Japanese BBQ | 15 Curry Up Now | 26 Hotaru |
| 7 Zablu-Zablu | Osteria Coppa | 27 Viognier |
| 8 Porterhouse San Mateo | 16 Pacific Catch | 28 Champagne Seafood |

SERVICES

- 1 Draeger's Market
- 2 Draper Universtiy
- 3 Walgreen's
- 4 Century 12 San Mateo
- 5 Hero City
- 6 U.S. Post Office
- 7 ARCO
- 8 Shell

FITNESS

- 1 24 Hour Fitness
- 2 Equinox
- 3 Core Power Yoga
- 4 SoulCycle
- 5 Orange Theory

BANKS

- 1 Chase Bank
- 2 Wells Fargo Bank
- 3 Bank of America
- 4 Bank of the West
- 5 Citibank
- 6 HSBC Bank
- 7 Union Bank
- 8 U.S. Bank

PARKING

- | | |
|---|-----------------------|
| P | 2ND & ECR Garage |
| P | Main St Garage |
| P | Tennis Court Garage |
| P | Central Garage |
| P | 5th/B Lot |
| P | 4th/B Lot |
| P | Transit Center Garage |
| P | 5th/Claremont Lot |
| P | 4th/Claremont Lot |

