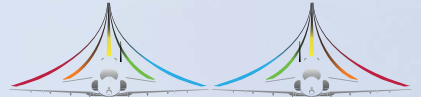


NEWLY REFURBISHED OFFICES TO LET AVAILABLE NOW!



HUMBER
ENTERPRISE PARK

HU15 1EQ

where business soars

FIREBRAND

4,997-10,016 Sq Ft

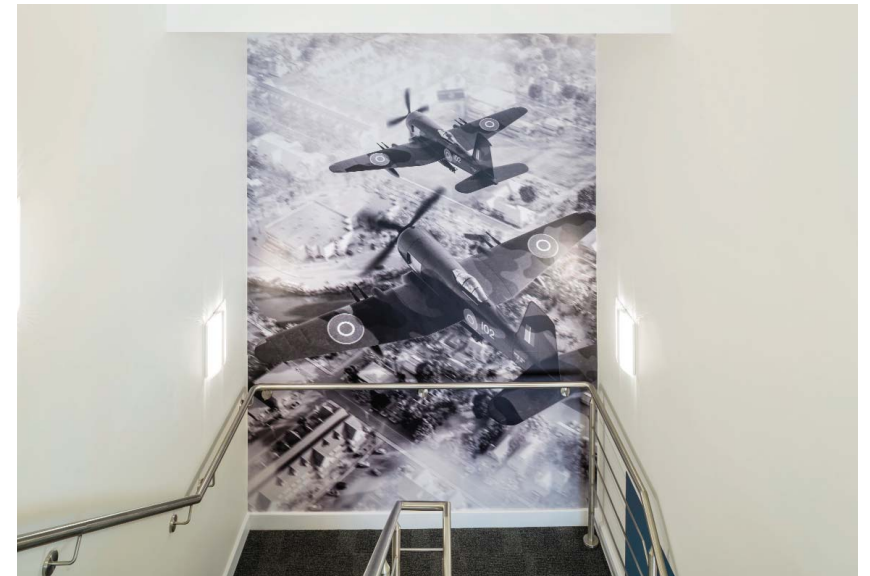
FIREBRAND



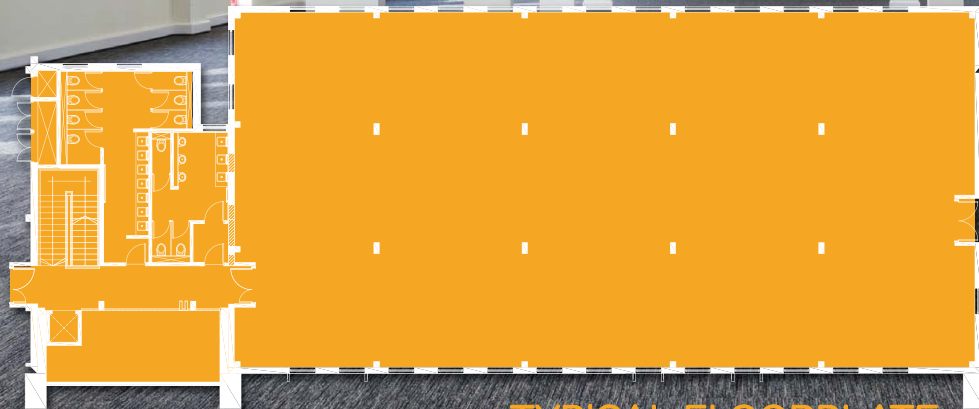


SPECIFICATION

- ✈ New double height feature reception
- ✈ Refurbished WC facilities to all floors
- ✈ 8 person passenger lift
- ✈ VRF Heating and cooling system Perimeter
- ✈ trunking
- ✈ Exposed M&E services and soffits
- ✈ New contemporary down lights
- ✈ DDA compliant
- ✈ Car Parking (8:1,000 sq ft)
- ✈ KC Lightstream broadband connectivity



FIREBRAND is a grade A air-conditioned office suite offering unencumbered views of the estuary and surrounding landscape.



TYPICAL FLOORPLATE

The floors have been measured in accordance with the RICS code of measuring practice (6th edition) to have the following approximate net internal floor areas:

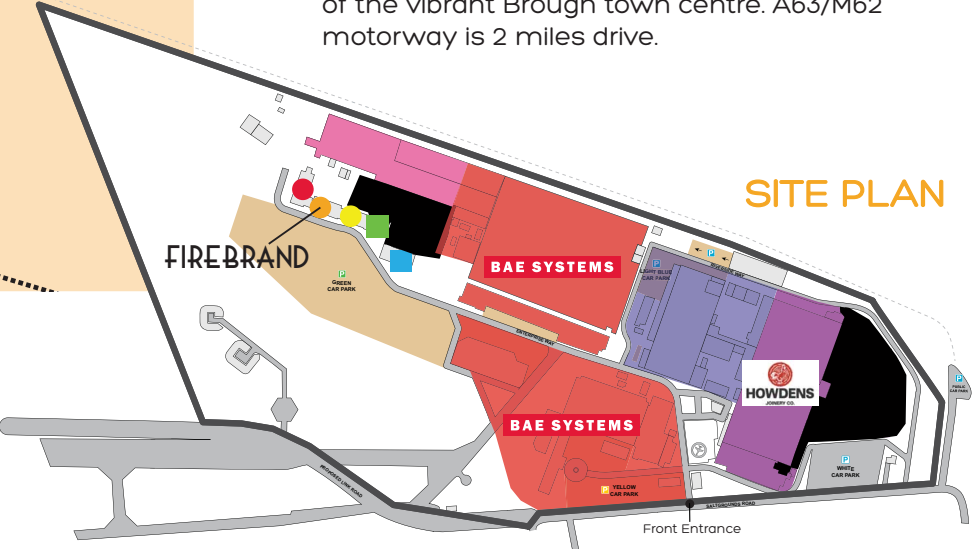
FIREBRAND	Sq M	Sq Ft
Ground Floor Suite	466.30	5,019
First Floor Suite	464.26	4,997
TOTAL	930.56	10,016



LOCATION

The development is within a few minutes walk of Brough railway station and 10 minutes walk of the vibrant Brough town centre. A63/M62 motorway is 2 miles drive.

SAT NAV: HU15 1EQ



SITE PLAN

TENURE

The building is available as a whole or on a floor by floor basis on new FRI lease terms to be agreed at a rent of £8.50 per sq ft.

SERVICE CHARGE

A service and estate charge will be applicable. Further details available on request.

EPC

The building has been assessed to have an EPC Rating of B(50). Further information available upon request.

ENQUIRIES

All enquiries please contact:



Ben Medhurst
 T: +44 (0)1482 626 910
 M: +44 (0)7710 344 603
 ben.medhurst@pph-commercial.co.uk



Sam Jamieson
 T: +44 (0)113 246 1533
 M: +44 (0)777 676 9987
 sam.jamieson@knightfrank.com

Elizabeth Ridler
 T: +44 (0)113 246 1533
 M: +44 (0)750 003 2855
 elizabeth.ridler@knightfrank.com

Property Misdescriptions Act: PPH and Knight Frank for themselves and for the vendors or lessors of this property for whom they act, give notice that: (i) these particulars are a general outline only, for the guidance of prospective purchasers or tenants, and do not constitute the whole or any part of an offer or contract; (ii) PPH and Knight Frank cannot guarantee the accuracy of any description, dimensions, references to condition, necessary permissions for use and occupation and other details contained herein and prospective purchasers or tenants must not rely on them as statements of fact or representations and must satisfy themselves as to their accuracy; (iii) no employee of PPH and Knight Frank has any authority to make or give any representation or warranty or enter into any contract whatever in relation to this property; (iv) rents quoted in these particulars may be subject to VAT in addition; and (v) PPH and Knight Frank will not be liable, in negligence or otherwise, for any loss arising from the use of these particulars. Energy Performance Certification will be undertaken upon completion. Designed and produced by www.thedesignexchange.co.uk Tel: 01943 604500. March 2017