



RETAIL SPACE

1050 THIRD AVENUE

NORTHWEST CORNER OF EAST 62ND STREET

LENOX HILL CORNER STOREFRONT - 1,166 SF - DENSE RESIDENTIAL AREA
CLOSE TO BLOOMINGDALE'S AND D&D BUILDING

1050 Third Avenue

Northwest Corner of East 62nd Street

Available

Ground: 1,166 sf (no basement)

Possession: June 1, 2026

Frontage: ± 26' fronting Third Avenue

Rent: Upon Request



Comments

- All dry and non-vented food uses considered - currently Juice Press
- Ideal location for showroom, wellness, service, fitness, retail, and pet related uses
- Join co-tenants DIGS, Amour de Hair, Daniel's Coffee & More, and The Sleep Loft (coming soon)
- Two blocks from Bloomingdale's and close to the D&D Building
- At the foot of Lexington Avenue's luxury retail corridor
- One minute walk from Lexington Ave/63rd St **F** **Q** - train station; and three minute walk from **4** **5** **6** **N** **R** **W** -trains at Lexington Ave/59th St
- Area tenants include Morton Williams Market, Starbucks, Bond Vet, Third Ave Apothecary, Cinema 123 by Angelika, Nuts Factory, Black Press Coffee, Pupstudio, Pro-Pro Nail & Spa III, Chase Bank,

By the Numbers

Retail Businesses

4,664

1 Mile Radius

Households

390,859

1 Mile - 2025

Avg. Household Income

\$166,929

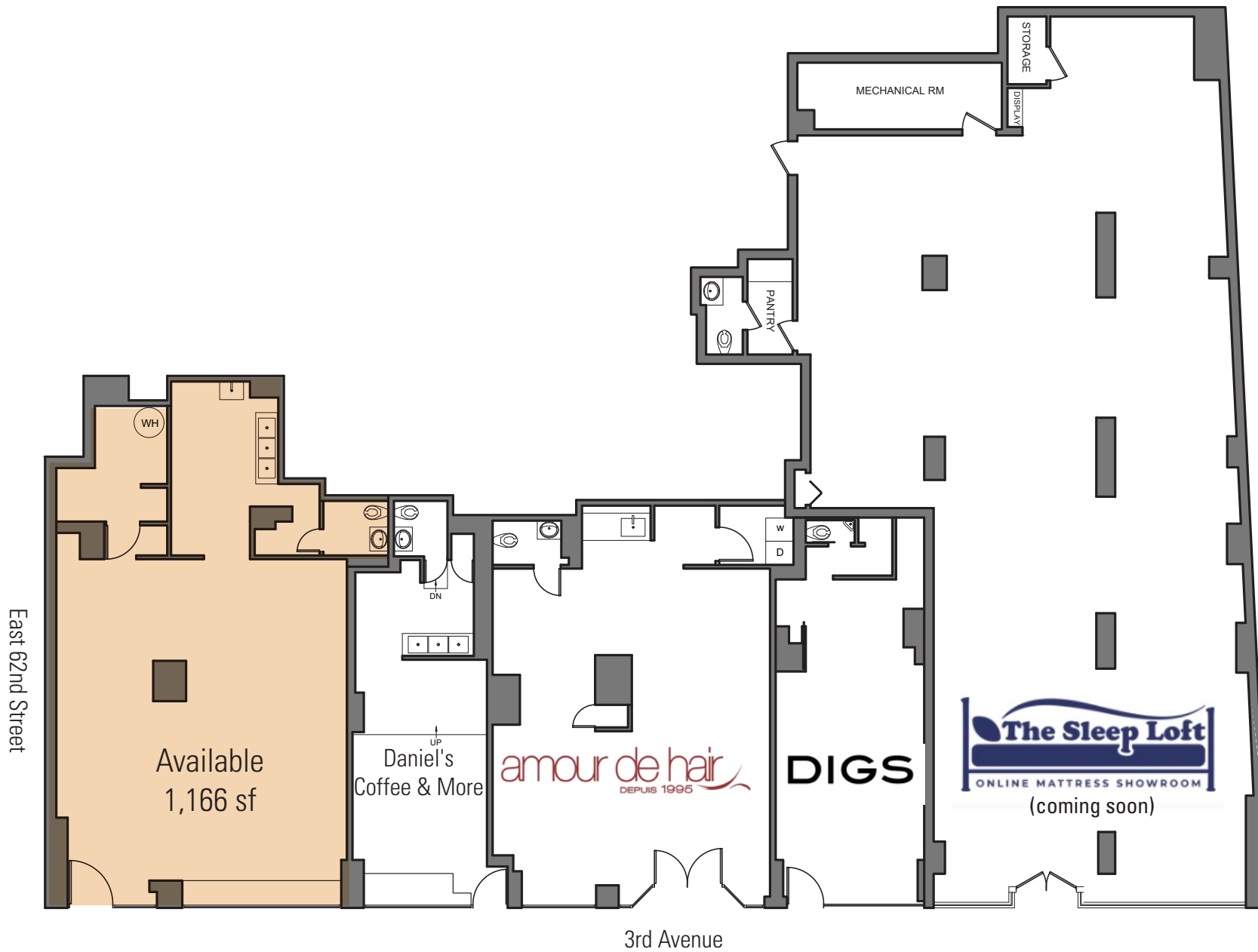
1 Mile - 2025

Annual Subway Ridership

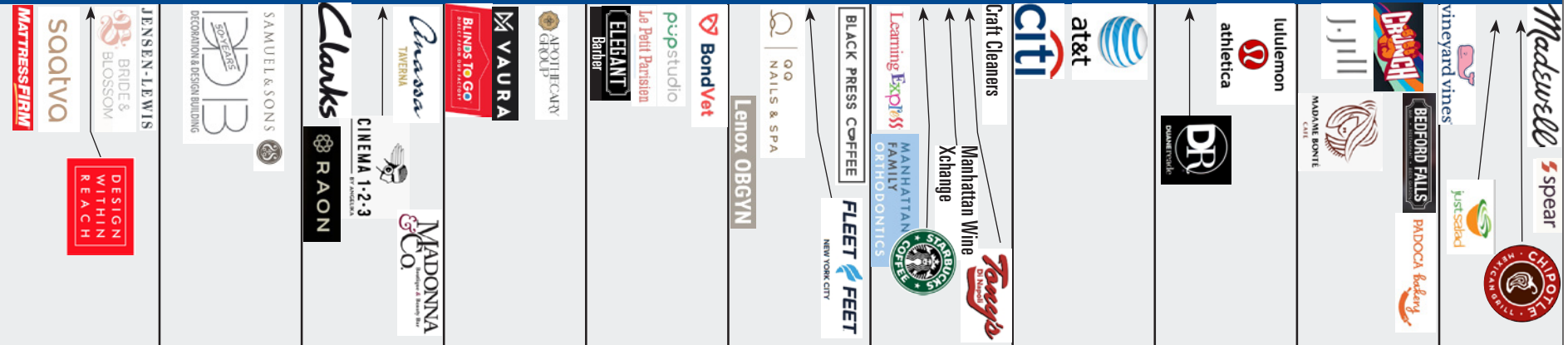
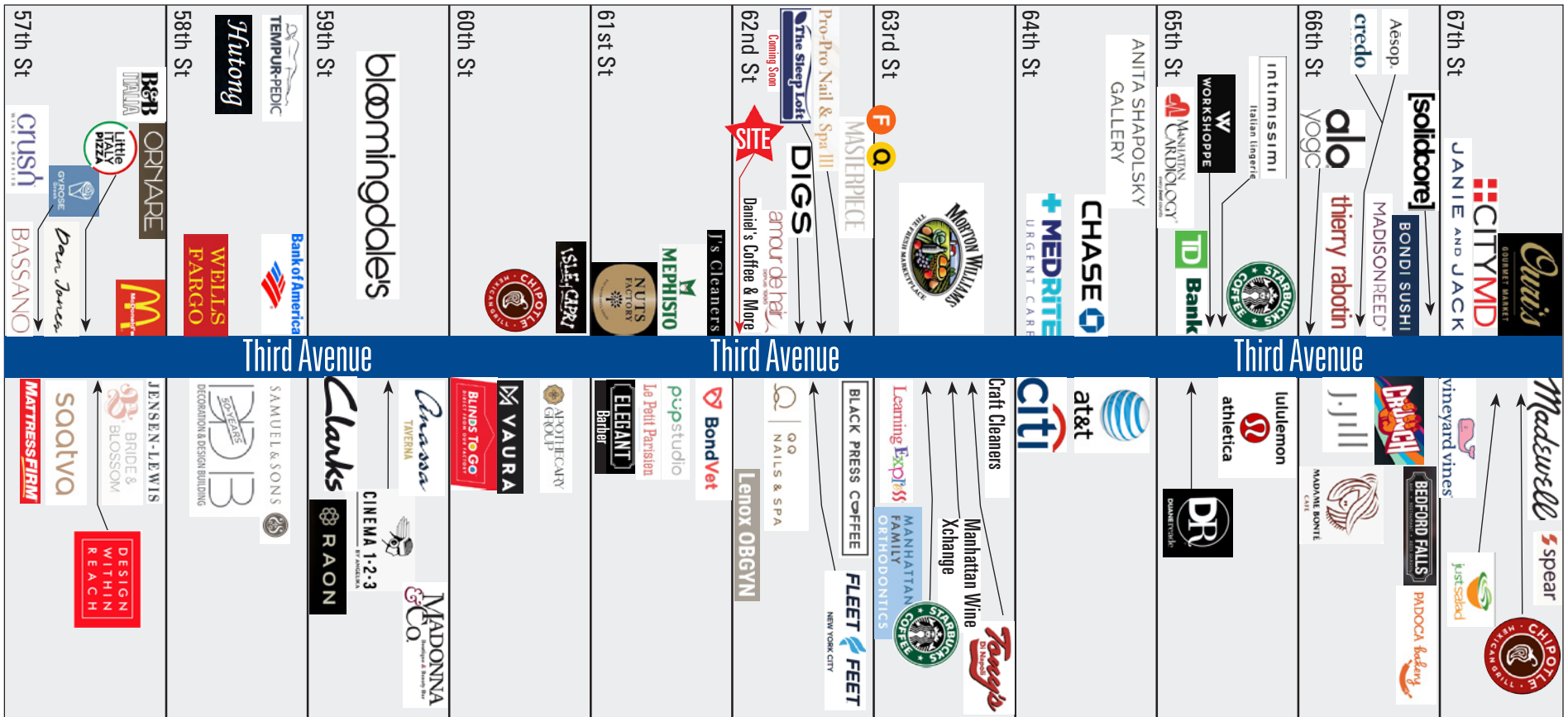
11,961,525

2024 - Lexington Ave/59th St Station

Floor Plan



Area Retail - Third Avenue Corridor



Looking North along Third Avenue



For further information and/or inspection contact exclusive agent for assignment / sale:

Mark Tergesen

Partner

212.400.9528

mt@absre.com

Howard I. Gilbert

Executive Managing Director

212.400.9492

hgilbert@absre.com

ABS Partners Real Estate • 200 Park Avenue South, 10th Floor, New York, NY 10003 • 212.400.6060 • www.absre.com