

BUILT-OUT MEDICAL OFFICE SUITE AVAILABLE NOW FOR LEASE



2215 Nebraska Ave, Ste. 3E • Ft. Pierce • FL

PROPERTY HIGHLIGHTS

- ±1,000 – 1,665 Rentable Square Feet
- Located within the Lawnwood Medical Arts Building directly adjacent to the Lawnwood Medical Center
- Built out with 5 exam rooms, 3 bathrooms, 2 offices, a waiting room, a business office, breakroom, and plenty of storage
- Front and back doors
- New HVAC

FOR LEASE - \$15.00 PRSF NNN
OPERATING EXPENSES: \$6.65 PRSF



Murray Brown
Broker Associate
561.776.9300
mb@assetspecialists.com



ASSET
SPECIALISTS, INC.

Asset Specialists, Inc.
Commercial Real Estate Services
3710 Buckeye Street • Suite 100
Palm Beach Gardens, FL 33410



INTERIOR PHOTOS

2215 Nebraska Ave, 3E, Fort Pierce, Fla. 34950

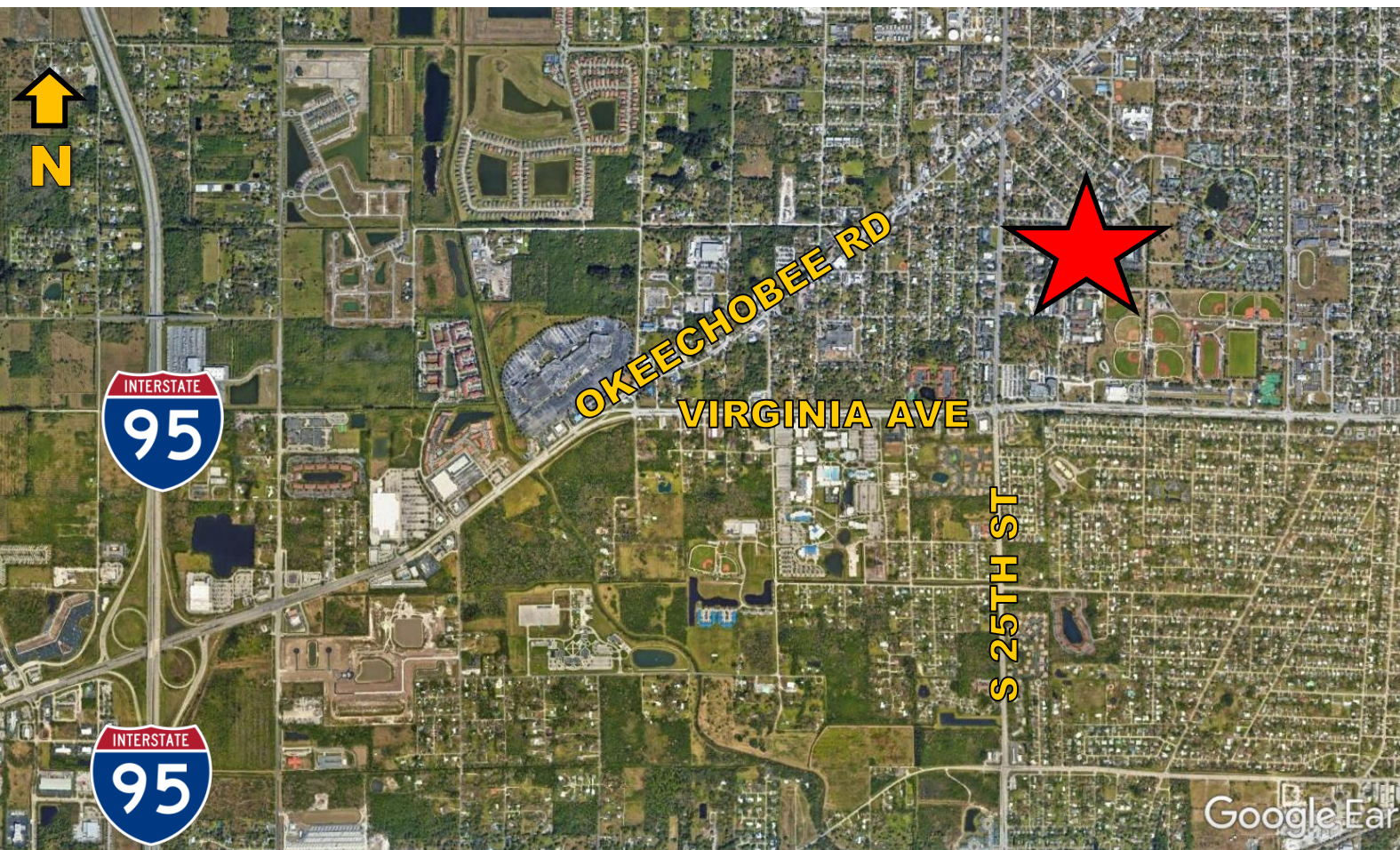


subject to errors, omissions, prior sale or lease, change in price and withdrawal



LOCATION ACCESS MAP

Directly Adjacent to Lawnwood Medical Center!



A S S E T
SPECIALISTS, INC.
Commercial Real Estate Services

3710 Buckeye Street • Suite 100 • Palm Beach Gardens • FL • 33410
Murray Brown, Broker Associate • 561.776.9300 • mb@assetspecialists.com
www.AssetSpecialists.com