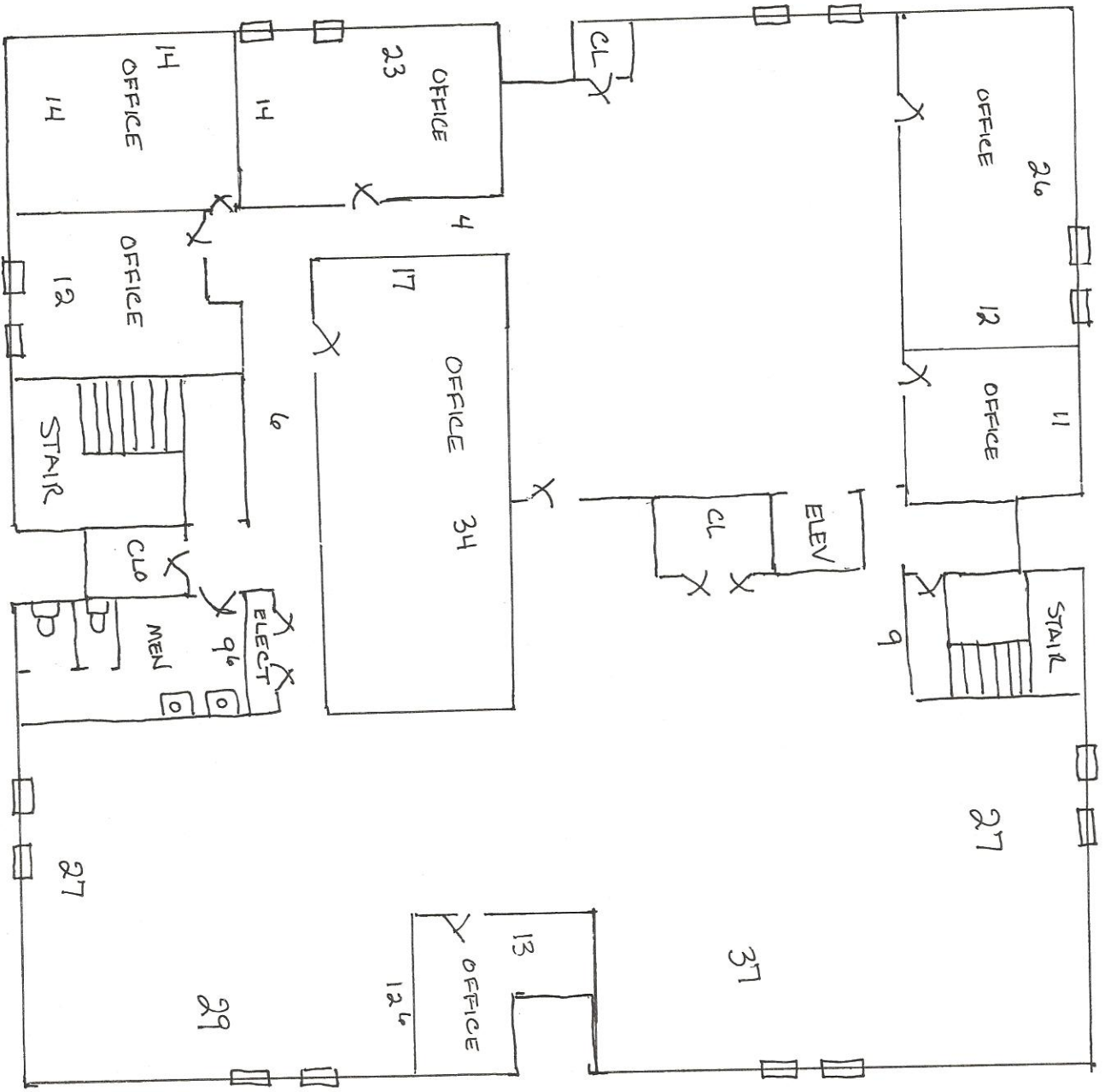


Not To Scale  
 DREAM BUILDERS INC  
 RONNIE WILLIAMS  
 615-473-6065

NOTES

- ① BUILDING HAS 32" OVERHANG ON ALL 4 SIDES
- ② WATER SERVICE # BACK FLOW PREV. 13' OUT FROM FRONT ENTRY
- ③ 1/8 SCALE



Second Floor

DREAM BUILDERS INC  
 RONNIE WILLIAMS  
 615-473-6065