

# Office Space For Lease In Downtown Canton

525 Market Ave. N., Canton, OH 44702



## QUICK STATS

**Available SF:** 2,615 SF - 15,615 SF

**Lease Rate:** \$5.00 - 12.00 SF/yr (+ \$1.00/SF NNN)

**Building Size:** 26,427 SF

## PROPERTY OVERVIEW

OFFICE SPACE FOR LEASE IN DOWNTOWN CANTON! Located in the Arts District of Downtown Canton on the corner of 6th and Market Ave., this recently renovated property is the home of a number of businesses and is directly adjacent to the Canton Palace Theater. The available space is in excellent condition and would make a great centrally located office. The 2nd floor is move in ready, while the third floor is an empty shell and the former location of a Masonic lodge. Please inquire for more details. Rental rates start at \$5/SF.

The City of Canton is currently offering tax incentives for new businesses. Details can be seen online at: <https://cantonohio.gov/business/?pg=loans>

## LEASE SPACES

Suite	Floor	SF Available	Lease Rate	Lease Terms
Kleinfelder Unit 1	1	2,880	\$12.00 SF/yr	+ \$1.00/SF NNN
Unit 2	2	6,500	\$10.00 SF/yr	+ \$1.00/SF NNN
Unit 3	2	2,615	\$10.00 SF/yr	+ \$1.00/SF NNN
Unit 4	4	6,500	\$5.00 SF/yr	+ \$1.00/SF NNN

## Our Network is Your Edge.

All information is from sources deemed reliable and is subject to errors, omissions, change of price, rental, prior sale, and withdrawal without notice. Prospect should carefully verify each item of information contained herein.

**TJ Hollin**

O: 330.940.9360

C: 330.618.8045

TJHollin@HoffLeigh.com



# Office Space For Lease In Downtown Canton

525 Market Ave. N., Canton, OH 44702



Our Network is Your Edge.

All information is from sources deemed reliable and is subject to errors, omissions, change of price, rental, prior sale, and withdrawal without notice. Prospect should carefully verify each item of information contained herein.

Hoff & Leigh | 2640 West Market Street, Suite 300 | Fairlawn, OH 44333 | 330.940.9360 office

**TJ Hollin**  
O: 330.940.9360  
C: 330.618.8045  
TJHollin@HoffLeigh.com

[www.hoffleigh.com/NEO](http://www.hoffleigh.com/NEO)



# Office Space For Lease In Downtown Canton

525 Market Ave. N., Canton, OH 44702



Our Network is Your Edge.

All information is from sources deemed reliable and is subject to errors, omissions, change of price, rental, prior sale, and withdrawal without notice. Prospect should carefully verify each item of information contained herein.

Hoff & Leigh | 2640 West Market Street, Suite 300 | Fairlawn, OH 44333 | 330.940.9360 office

TJ Hollin

O: 330.940.9360

C: 330.618.8045

TJHollin@HoffLeigh.com

[www.hoffleigh.com/NEO](http://www.hoffleigh.com/NEO)



# Office Space For Lease In Downtown Canton

525 Market Ave. N., Canton, OH 44702



Our Network is Your Edge.

All information is from sources deemed reliable and is subject to errors, omissions, change of price, rental, prior sale, and withdrawal without notice. Prospect should carefully verify each item of information contained herein.

Hoff & Leigh | 2640 West Market Street, Suite 300 | Fairlawn, OH 44333 | 330.940.9360 office

TJ Hollin

O: 330.940.9360

C: 330.618.8045

TJHollin@HoffLeigh.com

[www.hoffleigh.com/NEO](http://www.hoffleigh.com/NEO)



# Office Space For Lease In Downtown Canton

525 Market Ave. N., Canton, OH 44702



Our Network is Your Edge.

All information is from sources deemed reliable and is subject to errors, omissions, change of price, rental, prior sale, and withdrawal without notice. Prospect should carefully verify each item of information contained herein.

Hoff & Leigh | 2640 West Market Street, Suite 300 | Fairlawn, OH 44333 | 330.940.9360 office

TJ Hollin

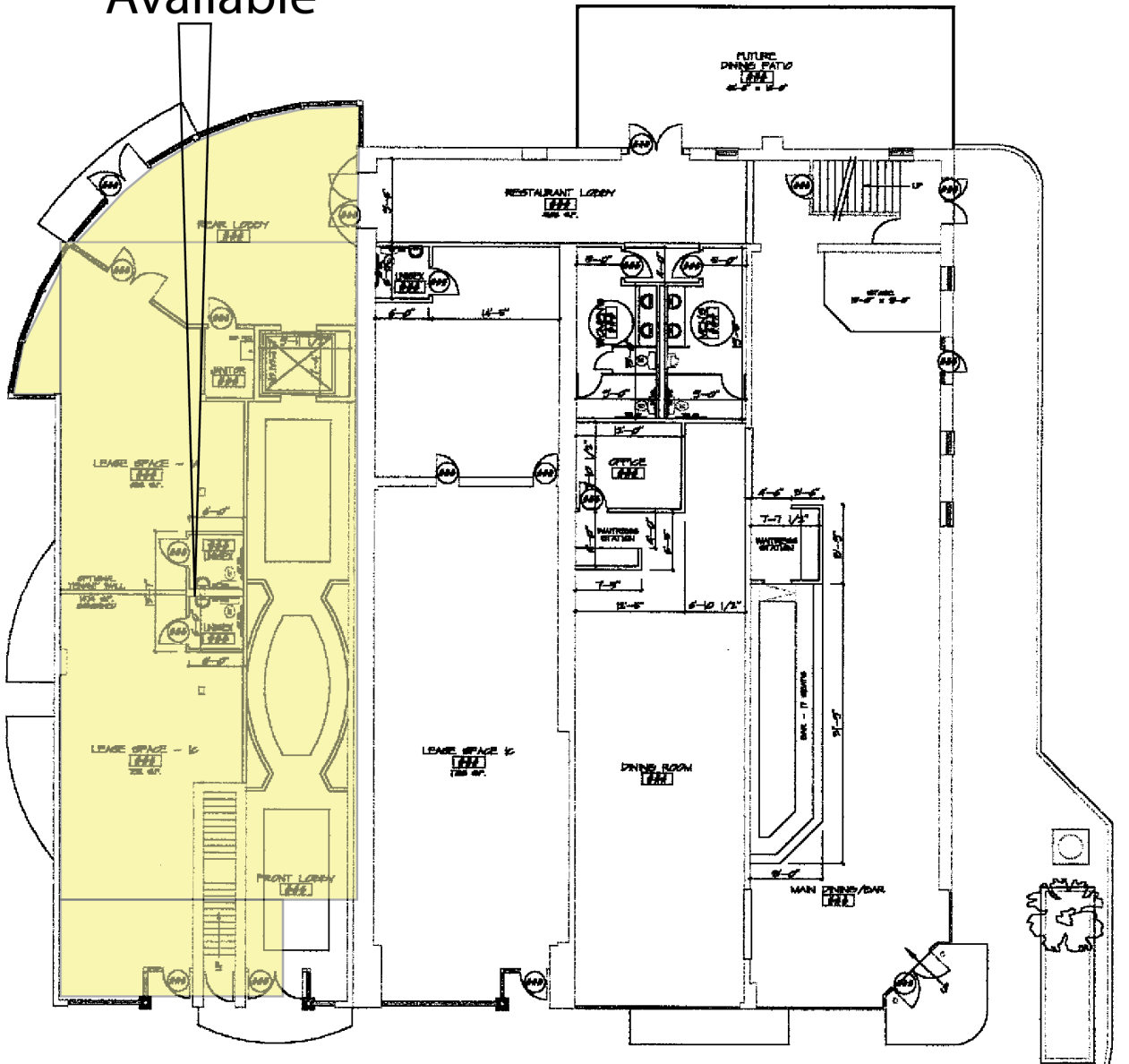
O: 330.940.9360

C: 330.618.8045

TJHollin@HoffLeigh.com

[www.hoffleigh.com/NEO](http://www.hoffleigh.com/NEO)

Available



Our Network is Your Edge.

All information is from sources deemed reliable and is subject to errors, omissions, change of price, rental, prior sale, and withdrawal without notice. Prospect should carefully verify each item of information contained herein.

# Office Space For Lease In Downtown Canton

## Second Floor



## Our Network is Your Edge.

All information is from sources deemed reliable and is subject to errors, omissions, change of price, rental, prior sale, and withdrawal without notice. Prospect should carefully verify each item of information contained herein.

TJ Hollin

O: 330.940.9360

C: 330.618.8045

TJHollin@HoffLeigh.com



# Office Space For Lease In Downtown Canton

525 Market Ave. N., Canton, OH 44702



Our Network is Your Edge.

All information is from sources deemed reliable and is subject to errors, omissions, change of price, rental, prior sale, and withdrawal without notice. Prospect should carefully verify each item of information contained herein.

Hoff & Leigh | 2640 West Market Street, Suite 300 | Fairlawn, OH 44333 | 330.940.9360 office

TJ Hollin

O: 330.940.9360

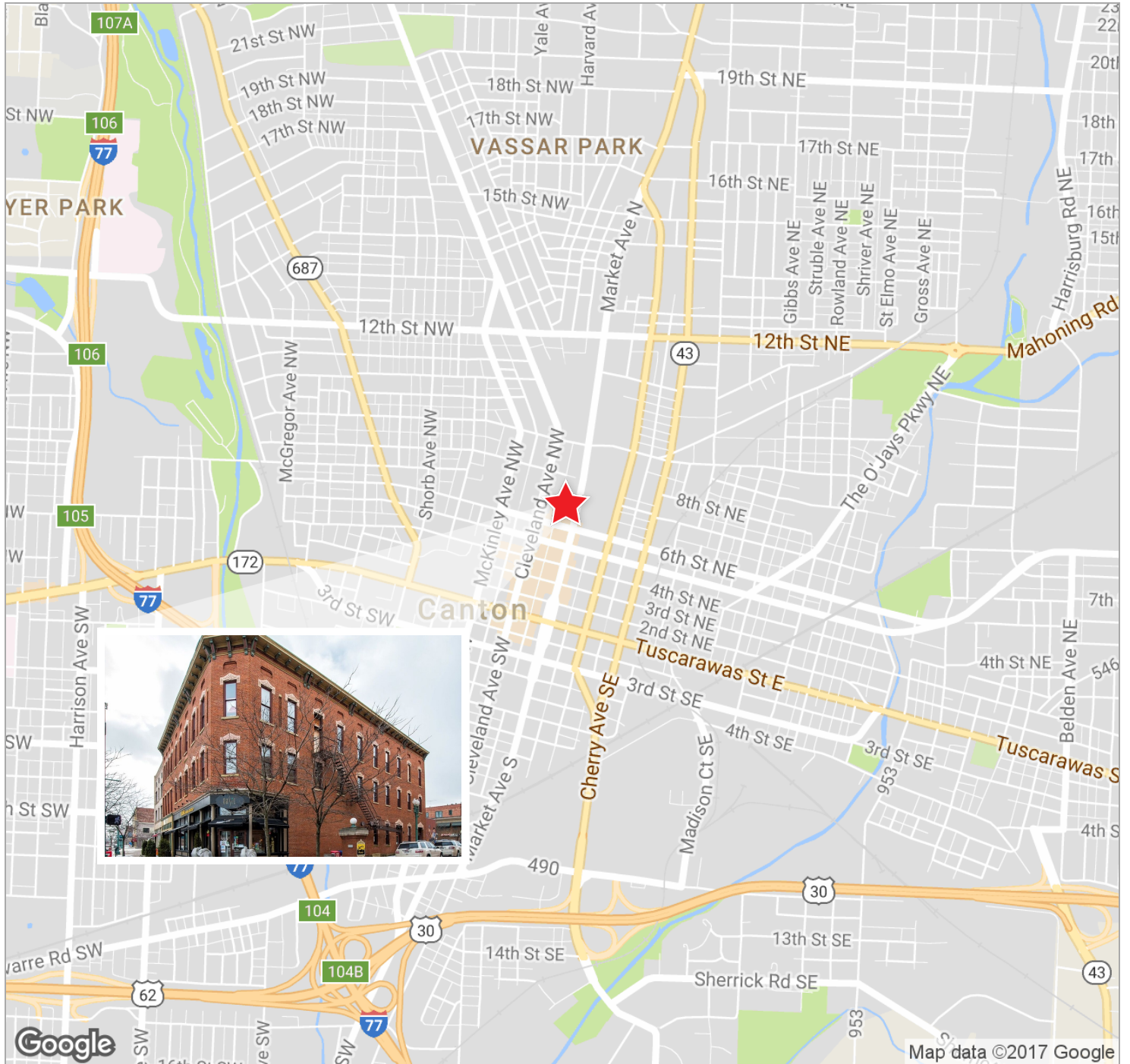
C: 330.618.8045

TJHollin@HoffLeigh.com

[www.hoffleigh.com/NEO](http://www.hoffleigh.com/NEO)

# Office Space For Lease In Downtown Canton

525 Market Ave. N., Canton, OH 44702



Our Network is Your Edge.

All information is from sources deemed reliable and is subject to errors, omissions, change of price, rental, prior sale, and withdrawal without notice. Prospect should carefully verify each item of information contained herein.

Hoff & Leigh | 2640 West Market Street, Suite 300 | Fairlawn, OH 44333 | 330.940.9360 office

TJ Hollin

O: 330.940.9360

C: 330.618.8045

TJHollin@HoffLeigh.com

[www.hoffleigh.com/NEO](http://www.hoffleigh.com/NEO)