

**SONOMA
COMMERCIAL**

LOCATED 2 ½ BLOCKS FROM THE PLAZA

Perfect office; check with city's Planning Dept regarding retail.



EAST 1, looking towards the front door.

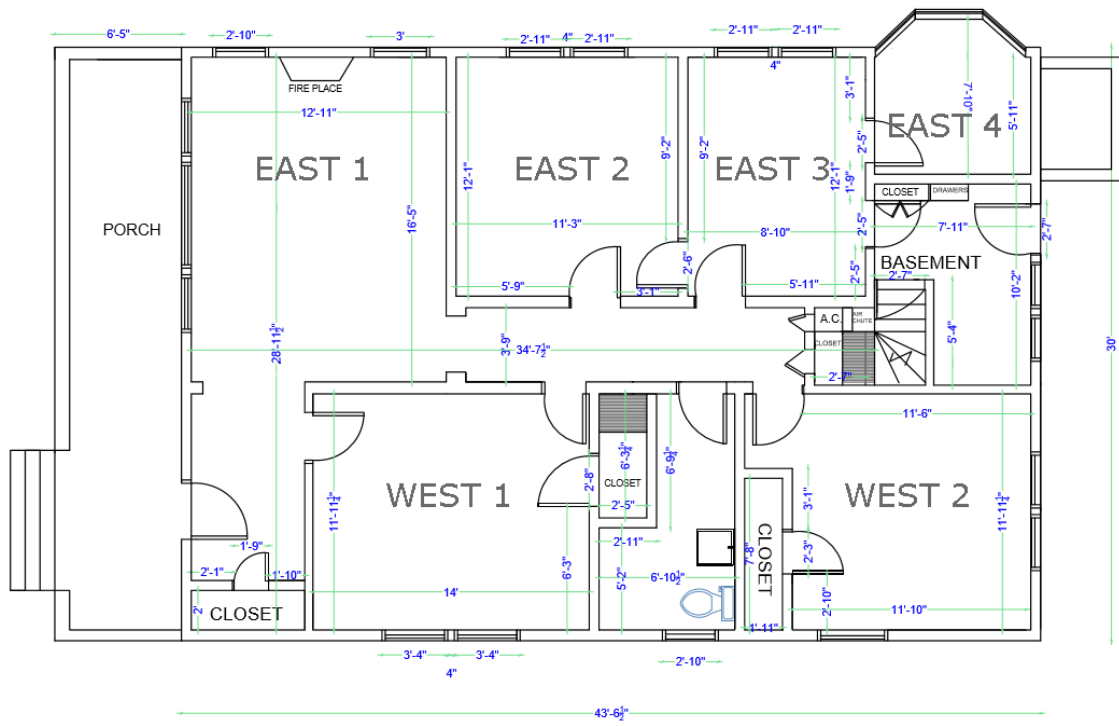


EAST1, looking down center hallway.

369 WEST NAPA ST. SONOMA CA 95476

- 1930s Craftsman, with high ceilings and period detail.
- Commercial – no kitchen or shower.
- High-visibility location.
- Building: 1333 sf.
- Lot size: 16,472 sf (plenty of parking!)
- Zoned MX.
- New high-efficiency HVAC.
- Rent: \$3,100/month, plus utilities.
- Three-year lease.

Hi, I'm Bill, the owner of this property. For more information, email bf@u-write.com or leave a message at 415.999.9108, and I will quickly return your call.



High visibility location.



WEST 1, looking toward front door.



EAST 4, looking east.



Plenty of off-street parking.



EAST 2, looking toward hallway.



WEST 2, looking south.



Deep back yard.



Nice period detail.



Bathroom (not ADA)



Hallway, looking north.

