



# PARK

@ 25TH

**26,299**

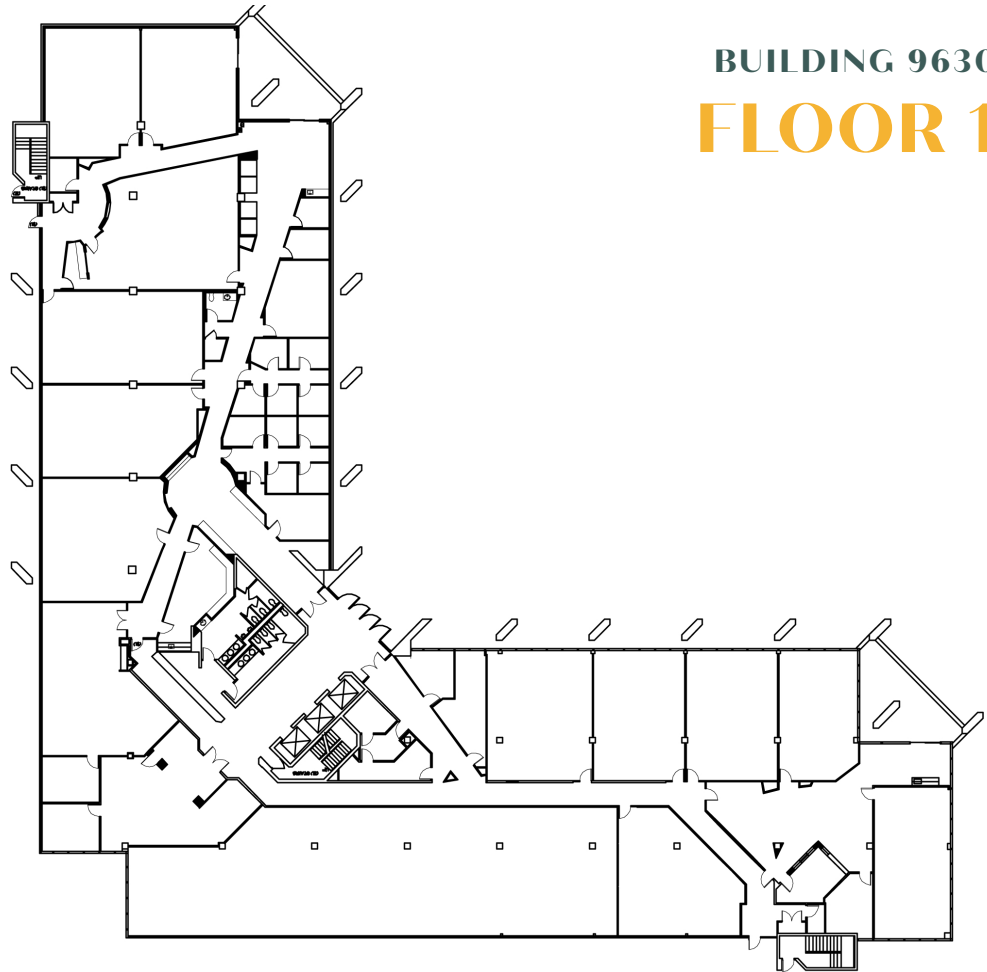
SQUARE FEET AVAILABLE

**\$22/SF**

FULL SERVICE LEASE RATE

**NEGOTIABLE**

TI ALLOWANCE



**BUILDING 9630**

**FLOOR 1**

## FOR LEASING INFORMATION, CONTACT

### Tyler Smith

Senior Vice President  
602.513.5136  
tyler.smith@kidder.com

### Rachael Thompson

Vice President  
602.513.5122  
rachael.thompson@kidder.com

[PARKAT25TH.COM](http://PARKAT25TH.COM)



THIS INFORMATION SUPPLIED HEREIN IS FROM SOURCES WE DEEM RELIABLE. IT IS PROVIDED WITHOUT ANY REPRESENTATION, WARRANTY, OR GUARANTEE, EXPRESSED OR IMPLIED AS TO ITS ACCURACY. PROSPECTIVE BUYER OR TENANT SHOULD CONDUCT AN INDEPENDENT INVESTIGATION AND VERIFICATION OF ALL MATTERS DEEMED TO BE MATERIAL, INCLUDING, BUT NOT LIMITED TO, STATEMENTS OF INCOME AND EXPENSES. CONSULT YOUR ATTORNEY, ACCOUNTANT, OR OTHER PROFESSIONAL ADVISOR.



PARK

@ 25TH

30,317

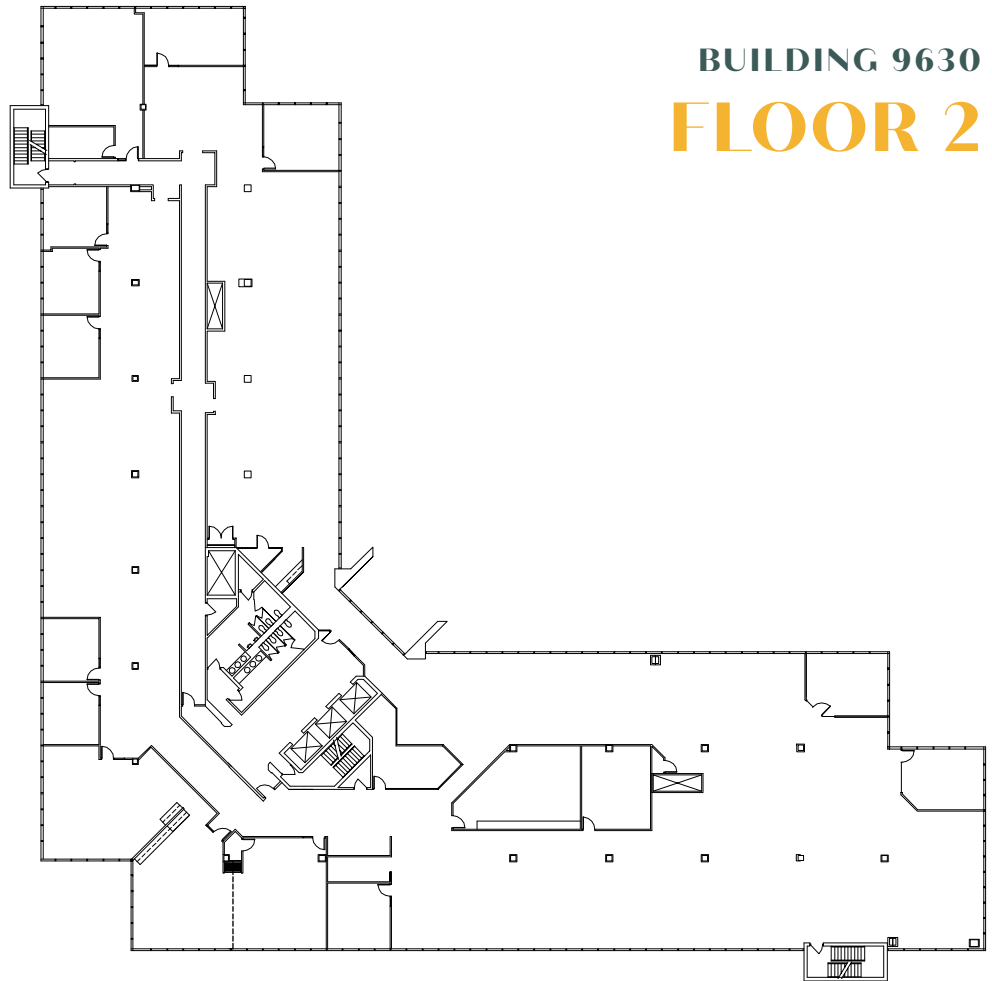
SQUARE FEET AVAILABLE

\$22/SF

FULL SERVICE LEASE RATE

NEGOTIABLE

TI ALLOWANCE



BUILDING 9630

FLOOR 2

### FOR LEASING INFORMATION, CONTACT

#### Tyler Smith

Senior Vice President  
602.513.5136  
tyler.smith@kidder.com

#### Rachael Thompson

Vice President  
602.513.5122  
rachael.thompson@kidder.com

[PARKAT25TH.COM](http://PARKAT25TH.COM)



THIS INFORMATION SUPPLIED HEREIN IS FROM SOURCES WE DEEM RELIABLE. IT IS PROVIDED WITHOUT ANY REPRESENTATION, WARRANTY, OR GUARANTEE, EXPRESSED OR IMPLIED AS TO ITS ACCURACY. PROSPECTIVE BUYER OR TENANT SHOULD CONDUCT AN INDEPENDENT INVESTIGATION AND VERIFICATION OF ALL MATTERS DEEMED TO BE MATERIAL, INCLUDING, BUT NOT LIMITED TO, STATEMENTS OF INCOME AND EXPENSES. CONSULT YOUR ATTORNEY, ACCOUNTANT, OR OTHER PROFESSIONAL ADVISOR.



# PARK

@ 25TH

## 30,317

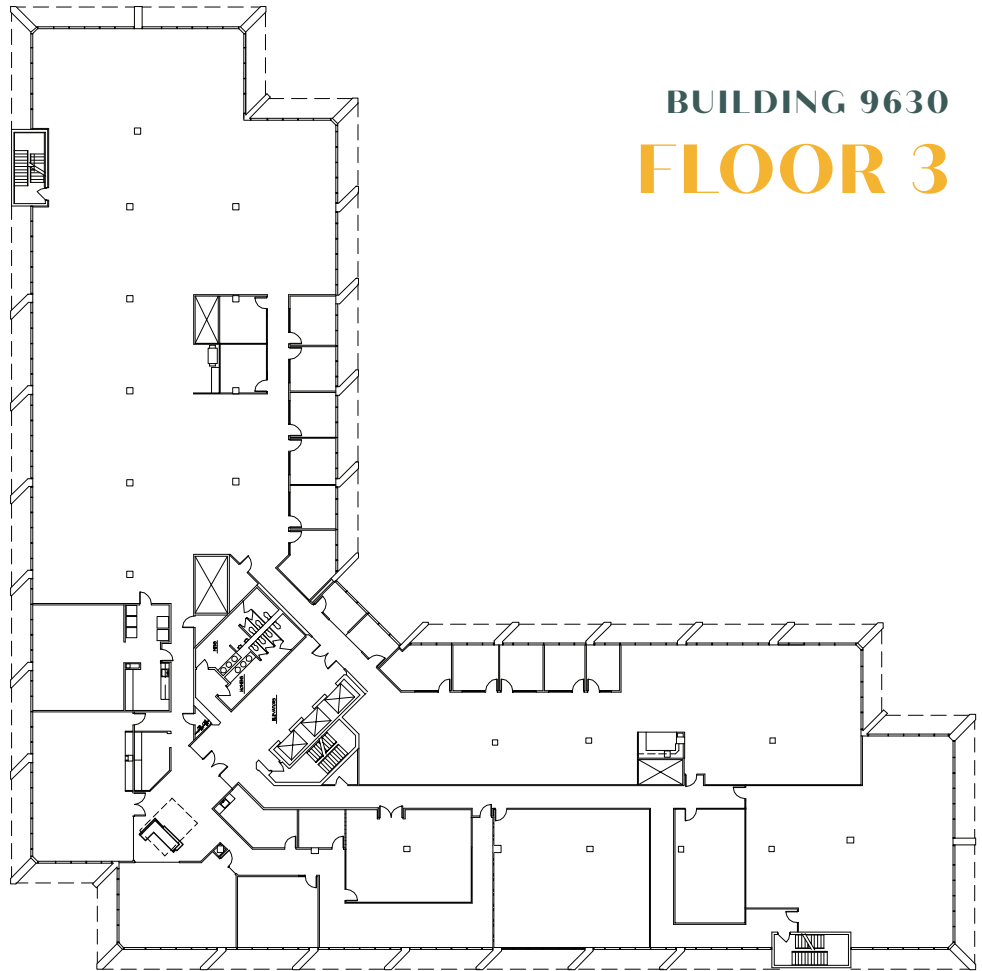
SQUARE FEET AVAILABLE

## \$22/SF

FULL SERVICE LEASE RATE

## NEGOTIABLE

TI ALLOWANCE



BUILDING 9630

# FLOOR 3

### FOR LEASING INFORMATION, CONTACT

#### Tyler Smith

Senior Vice President  
602.513.5136  
tyler.smith@kidder.com

#### Rachael Thompson

Vice President  
602.513.5122  
rachael.thompson@kidder.com

[PARKAT25TH.COM](http://PARKAT25TH.COM)



THIS INFORMATION SUPPLIED HEREIN IS FROM SOURCES WE DEEM RELIABLE. IT IS PROVIDED WITHOUT ANY REPRESENTATION, WARRANTY, OR GUARANTEE, EXPRESSED OR IMPLIED AS TO ITS ACCURACY. PROSPECTIVE BUYER OR TENANT SHOULD CONDUCT AN INDEPENDENT INVESTIGATION AND VERIFICATION OF ALL MATTERS DEEMED TO BE MATERIAL, INCLUDING, BUT NOT LIMITED TO, STATEMENTS OF INCOME AND EXPENSES. CONSULT YOUR ATTORNEY, ACCOUNTANT, OR OTHER PROFESSIONAL ADVISOR.



# PARK

@ 25TH

## 30,317

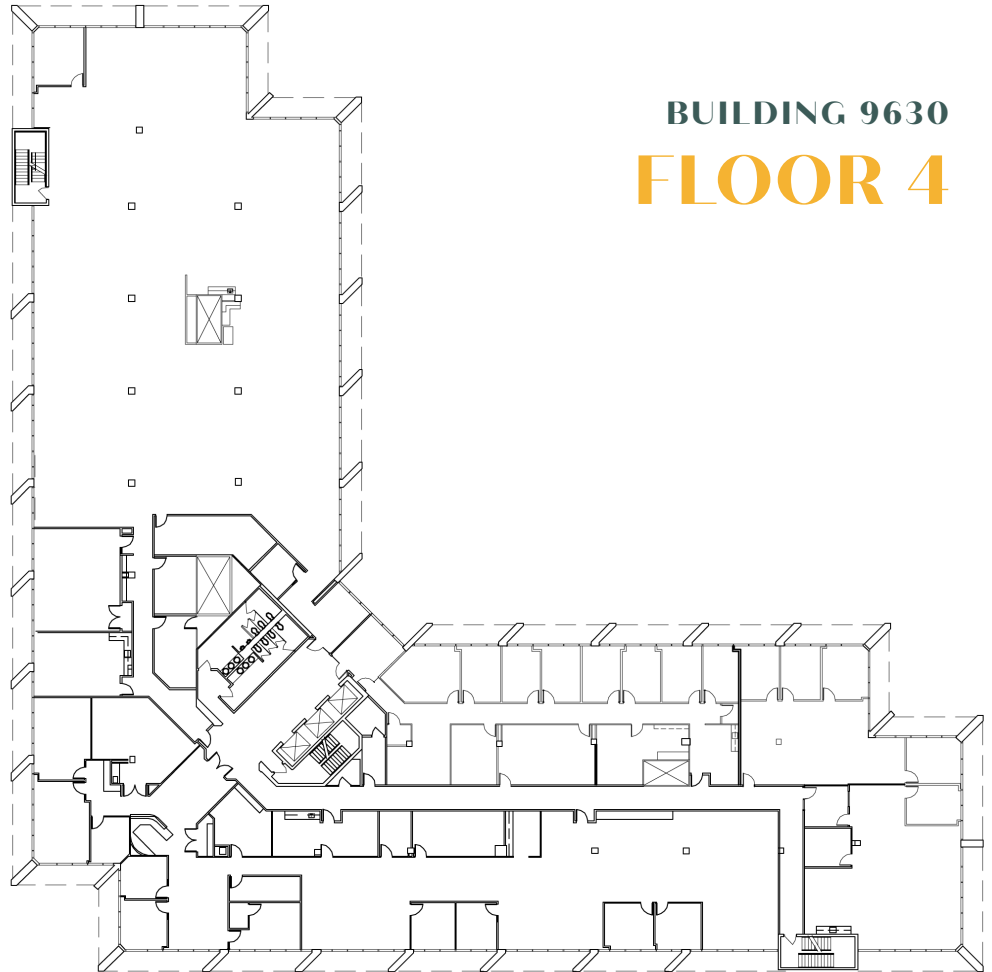
SQUARE FEET AVAILABLE

## \$22/SF

FULL SERVICE LEASE RATE

## NEGOTIABLE

TI ALLOWANCE



BUILDING 9630

# FLOOR 4

### FOR LEASING INFORMATION, CONTACT

#### Tyler Smith

Senior Vice President  
602.513.5136  
tyler.smith@kidder.com

#### Rachael Thompson

Vice President  
602.513.5122  
rachael.thompson@kidder.com

[PARKAT25TH.COM](http://PARKAT25TH.COM)



THIS INFORMATION SUPPLIED HEREIN IS FROM SOURCES WE DEEM RELIABLE. IT IS PROVIDED WITHOUT ANY REPRESENTATION, WARRANTY, OR GUARANTEE, EXPRESSED OR IMPLIED AS TO ITS ACCURACY. PROSPECTIVE BUYER OR TENANT SHOULD CONDUCT AN INDEPENDENT INVESTIGATION AND VERIFICATION OF ALL MATTERS DEEMED TO BE MATERIAL, INCLUDING, BUT NOT LIMITED TO, STATEMENTS OF INCOME AND EXPENSES. CONSULT YOUR ATTORNEY, ACCOUNTANT, OR OTHER PROFESSIONAL ADVISOR.



# PARK

@ 25TH

BUILDING 10010

## FLOOR 1

### 16,547

SQUARE FEET AVAILABLE

—  

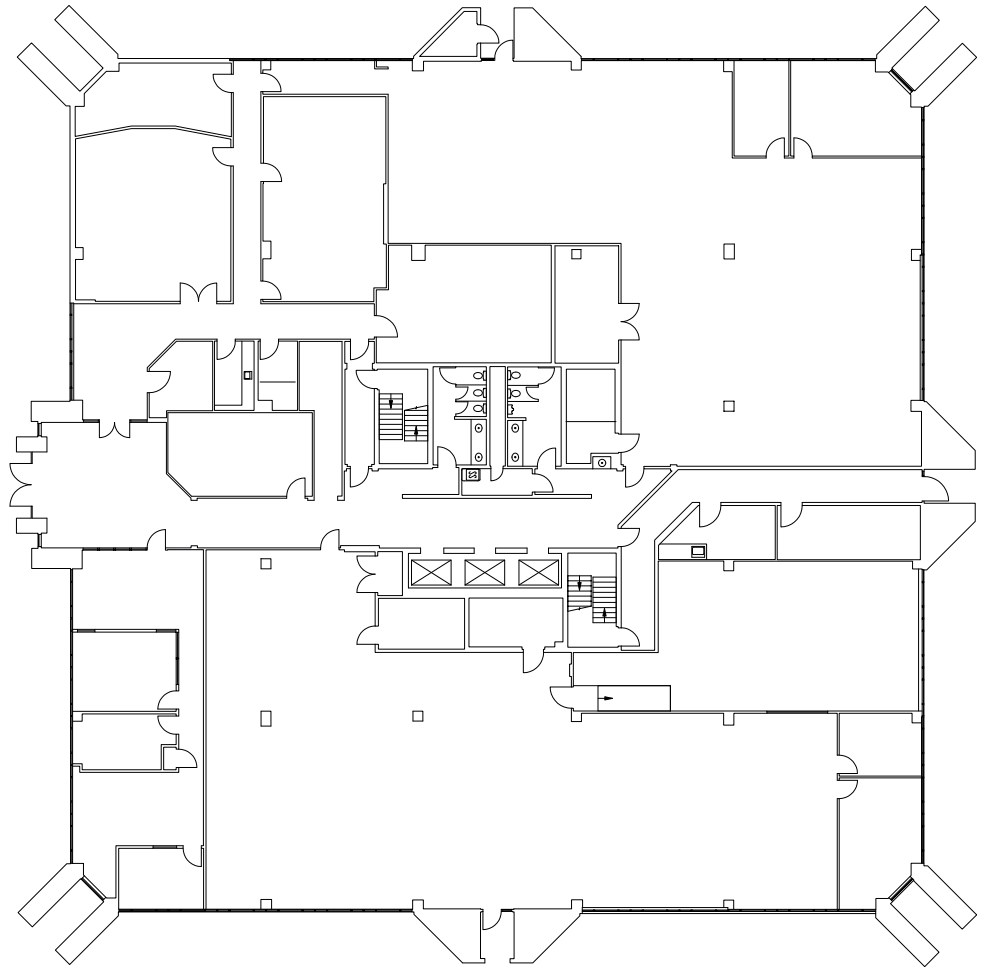
### \$22/SF

FULL SERVICE LEASE RATE

—  

## NEGOTIABLE

TI ALLOWANCE



FOR LEASING INFORMATION, CONTACT

**Tyler Smith**

Senior Vice President

602.513.5136

tyler.smith@kidder.com

**Rachael Thompson**

Vice President

602.513.5122

rachael.thompson@kidder.com

[PARKAT25TH.COM](http://PARKAT25TH.COM)



THIS INFORMATION SUPPLIED HEREIN IS FROM SOURCES WE DEEM RELIABLE. IT IS PROVIDED WITHOUT ANY REPRESENTATION, WARRANTY, OR GUARANTEE, EXPRESSED OR IMPLIED AS TO ITS ACCURACY. PROSPECTIVE BUYER OR TENANT SHOULD CONDUCT AN INDEPENDENT INVESTIGATION AND VERIFICATION OF ALL MATTERS DEEMED TO BE MATERIAL, INCLUDING, BUT NOT LIMITED TO, STATEMENTS OF INCOME AND EXPENSES. CONSULT YOUR ATTORNEY, ACCOUNTANT, OR OTHER PROFESSIONAL ADVISOR.



# PARK

@ 25TH

BUILDING 10010

## FLOOR 2

### 18,849

SQUARE FEET AVAILABLE

### \$22/SF

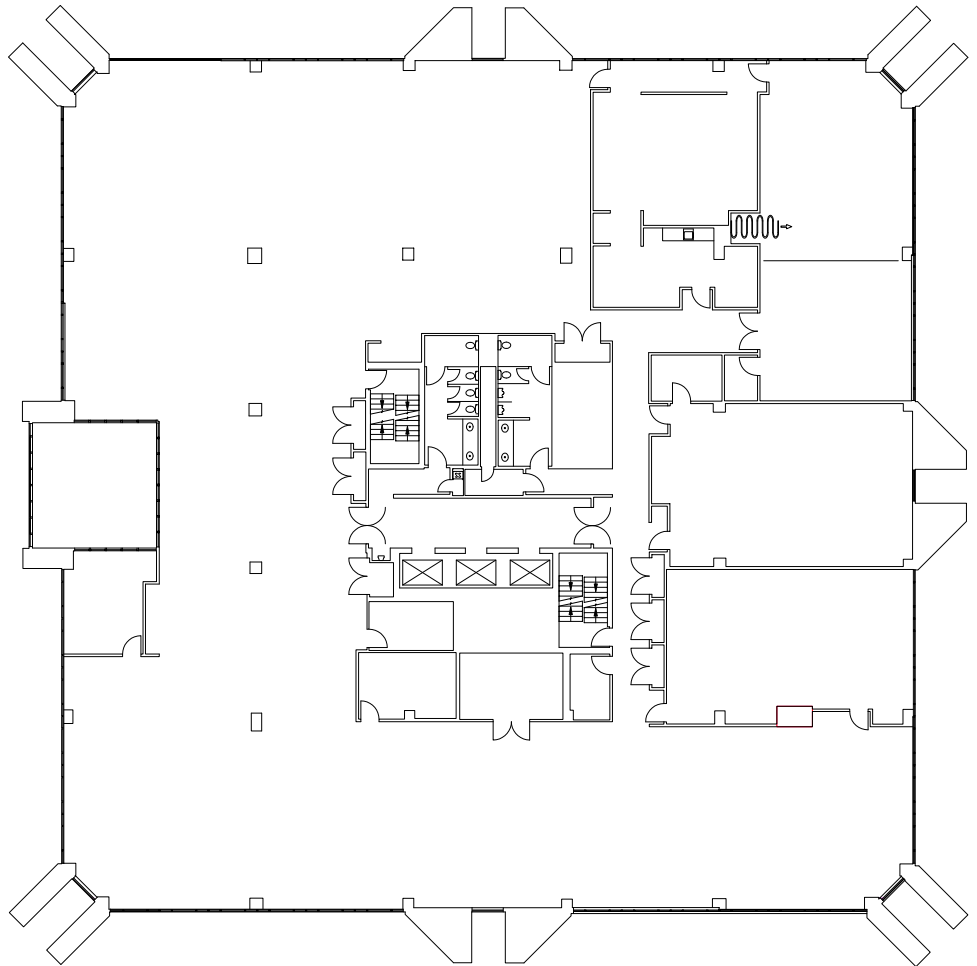
FULL SERVICE LEASE RATE

## NEGOTIABLE

TI ALLOWANCE

### FF&E

IN PLACE



FOR LEASING INFORMATION, CONTACT

**Tyler Smith**

Senior Vice President

602.513.5136

tyler.smith@kidder.com

**Rachael Thompson**

Vice President

602.513.5122

rachael.thompson@kidder.com

[PARKAT25TH.COM](http://PARKAT25TH.COM)



**Kidder  
Mathews**

THIS INFORMATION SUPPLIED HEREIN IS FROM SOURCES WE DEEM RELIABLE. IT IS PROVIDED WITHOUT ANY REPRESENTATION, WARRANTY, OR GUARANTEE, EXPRESSED OR IMPLIED AS TO ITS ACCURACY. PROSPECTIVE BUYER OR TENANT SHOULD CONDUCT AN INDEPENDENT INVESTIGATION AND VERIFICATION OF ALL MATTERS DEEMED TO BE MATERIAL, INCLUDING, BUT NOT LIMITED TO, STATEMENTS OF INCOME AND EXPENSES. CONSULT YOUR ATTORNEY, ACCOUNTANT, OR OTHER PROFESSIONAL ADVISOR.



# PARK

@ 25TH

BUILDING 10010

## FLOOR 3

### 19,425

SQUARE FEET AVAILABLE

### \$22/SF

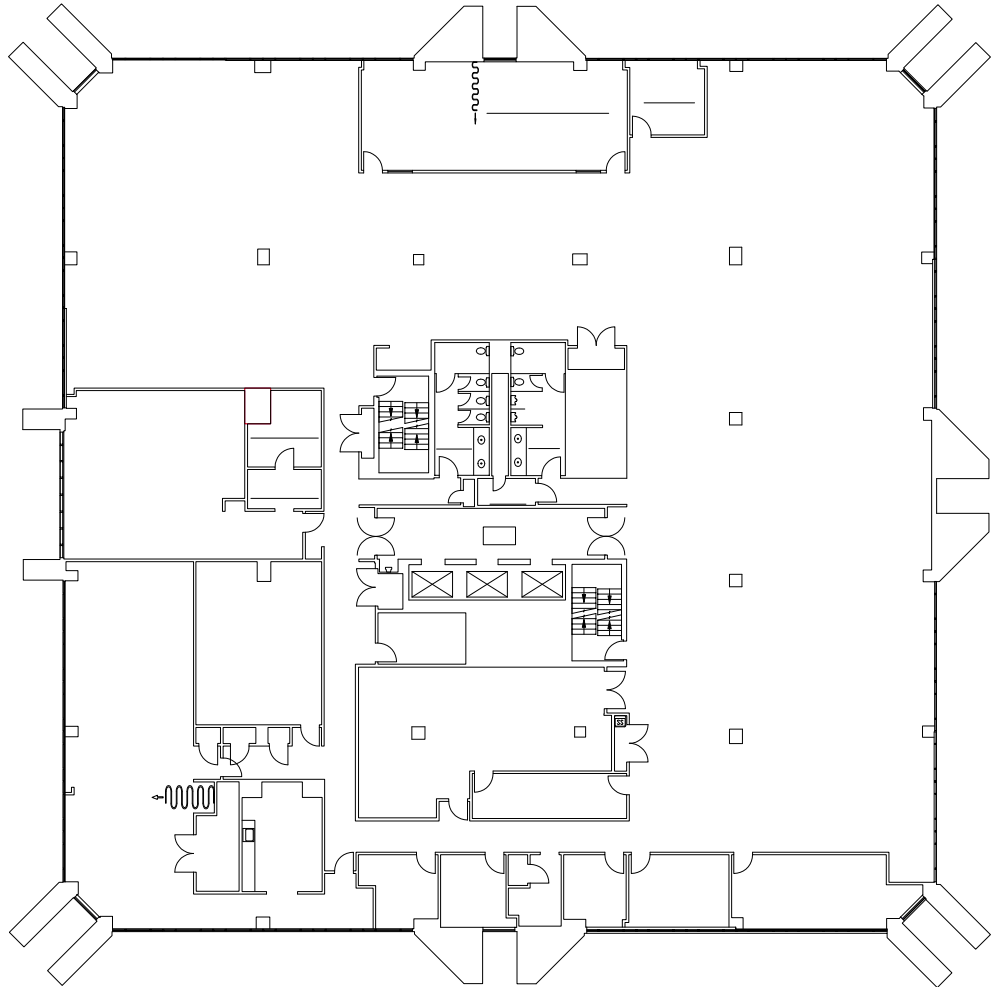
FULL SERVICE LEASE RATE

## NEGOTIABLE

TI ALLOWANCE

## FF&E

IN PLACE



FOR LEASING INFORMATION, CONTACT

**Tyler Smith**

Senior Vice President  
602.513.5136  
tyler.smith@kidder.com

**Rachael Thompson**

Vice President  
602.513.5122  
rachael.thompson@kidder.com

[PARKAT25TH.COM](http://PARKAT25TH.COM)



**Kidder  
Mathews**

THIS INFORMATION SUPPLIED HEREIN IS FROM SOURCES WE DEEM RELIABLE. IT IS PROVIDED WITHOUT ANY REPRESENTATION, WARRANTY, OR GUARANTEE, EXPRESSED OR IMPLIED AS TO ITS ACCURACY. PROSPECTIVE BUYER OR TENANT SHOULD CONDUCT AN INDEPENDENT INVESTIGATION AND VERIFICATION OF ALL MATTERS DEEMED TO BE MATERIAL, INCLUDING, BUT NOT LIMITED TO, STATEMENTS OF INCOME AND EXPENSES. CONSULT YOUR ATTORNEY, ACCOUNTANT, OR OTHER PROFESSIONAL ADVISOR.



# PARK

@ 25TH

BUILDING 10030

## FLOOR 2

### 12,361

SQUARE FEET AVAILABLE

—

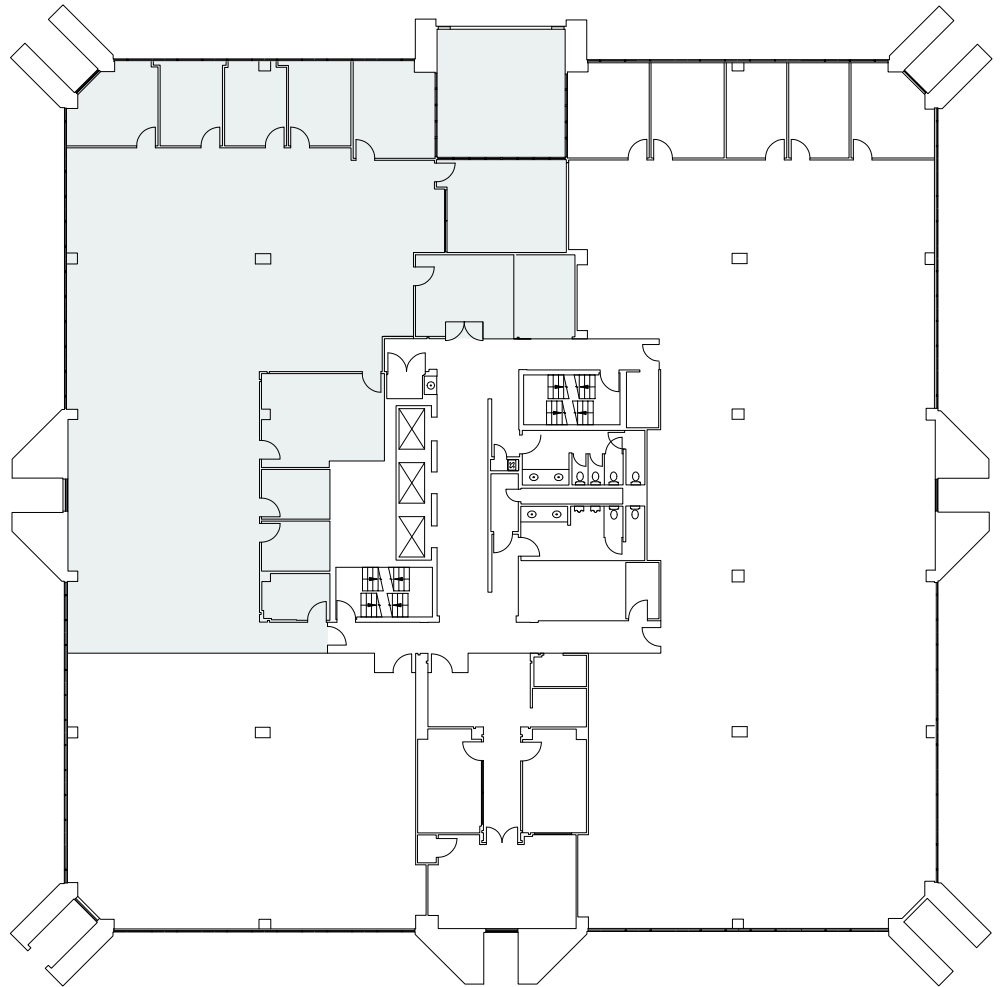
### \$22/SF

FULL SERVICE LEASE RATE

—

## NEGOTIABLE

TI ALLOWANCE



FOR LEASING INFORMATION, CONTACT

**Tyler Smith**

Senior Vice President

602.513.5136

tyler.smith@kidder.com

**Rachael Thompson**

Vice President

602.513.5122

rachael.thompson@kidder.com

[PARKAT25TH.COM](http://PARKAT25TH.COM)



**Kidder  
Mathews**

THIS INFORMATION SUPPLIED HEREIN IS FROM SOURCES WE DEEM RELIABLE. IT IS PROVIDED WITHOUT ANY REPRESENTATION, WARRANTY, OR GUARANTEE, EXPRESSED OR IMPLIED AS TO ITS ACCURACY. PROSPECTIVE BUYER OR TENANT SHOULD CONDUCT AN INDEPENDENT INVESTIGATION AND VERIFICATION OF ALL MATTERS DEEMED TO BE MATERIAL, INCLUDING, BUT NOT LIMITED TO, STATEMENTS OF INCOME AND EXPENSES. CONSULT YOUR ATTORNEY, ACCOUNTANT, OR OTHER PROFESSIONAL ADVISOR.





# PARK

@ 25TH

BUILDING 10030

## FLOOR 3

### 19,071

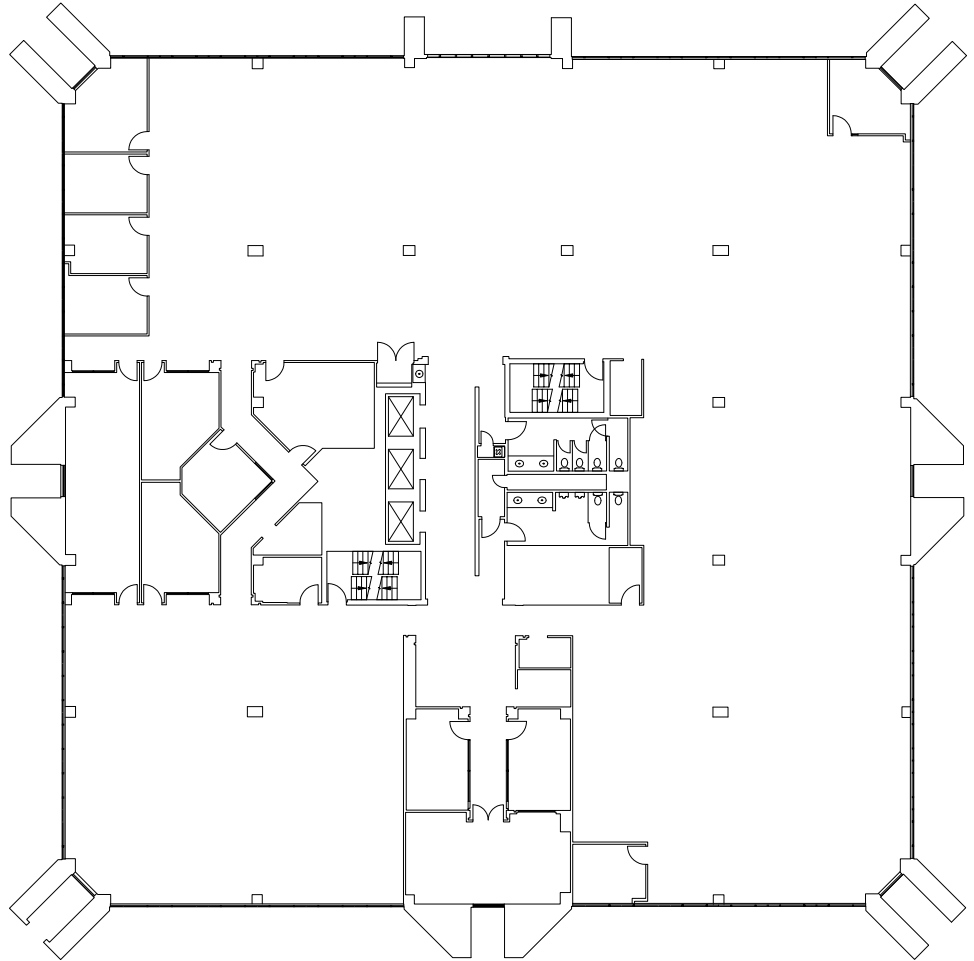
SQUARE FEET AVAILABLE

### \$22/SF

FULL SERVICE LEASE RATE

## NEGOTIABLE

TI ALLOWANCE



FOR LEASING INFORMATION, CONTACT

**Tyler Smith**

Senior Vice President

602.513.5136

tyler.smith@kidder.com

**Rachael Thompson**

Vice President

602.513.5122

rachael.thompson@kidder.com

[PARKAT25TH.COM](http://PARKAT25TH.COM)



**Kidder  
Mathews**

THIS INFORMATION SUPPLIED HEREIN IS FROM SOURCES WE DEEM RELIABLE. IT IS PROVIDED WITHOUT ANY REPRESENTATION, WARRANTY, OR GUARANTEE, EXPRESSED OR IMPLIED AS TO ITS ACCURACY. PROSPECTIVE BUYER OR TENANT SHOULD CONDUCT AN INDEPENDENT INVESTIGATION AND VERIFICATION OF ALL MATTERS DEEMED TO BE MATERIAL, INCLUDING, BUT NOT LIMITED TO, STATEMENTS OF INCOME AND EXPENSES. CONSULT YOUR ATTORNEY, ACCOUNTANT, OR OTHER PROFESSIONAL ADVISOR.



# PARK

@ 25TH

BUILDING 10030

## FLOOR 4

### 19,019

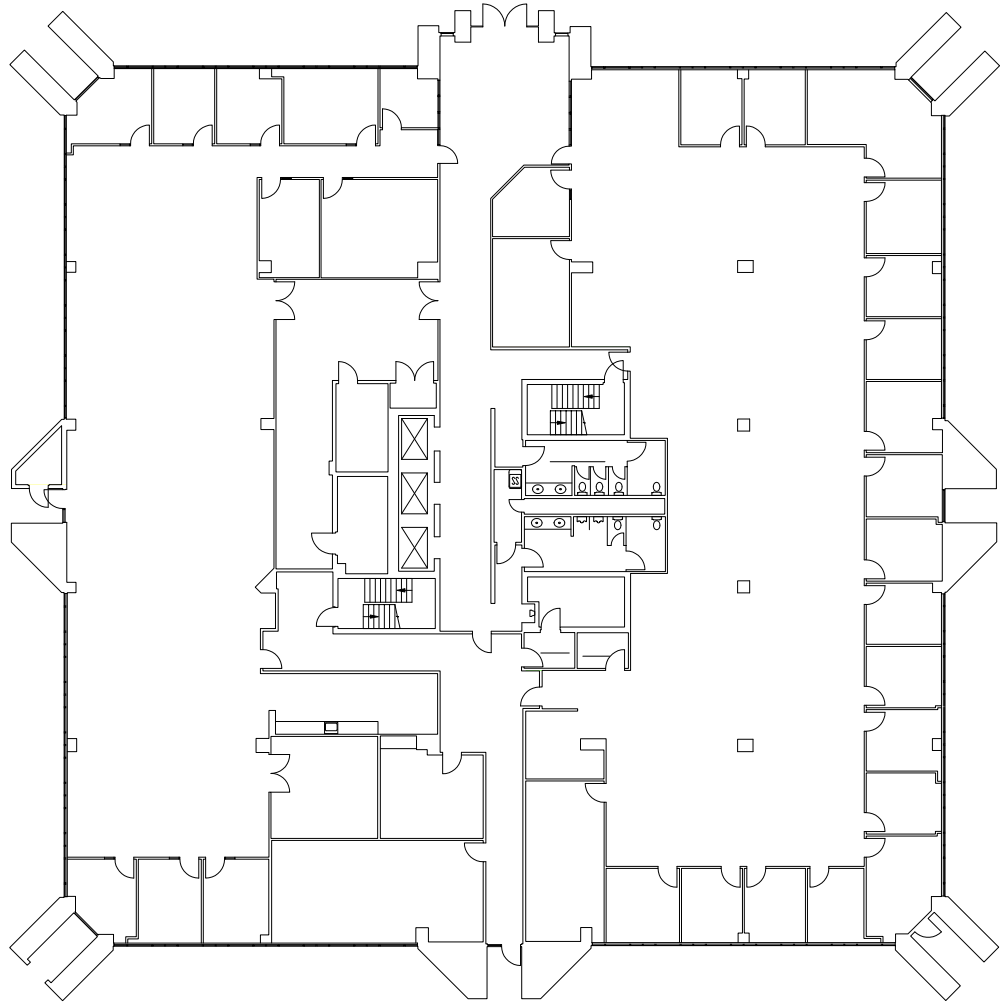
SQUARE FEET AVAILABLE

### \$22/SF

FULL SERVICE LEASE RATE

## NEGOTIABLE

TI ALLOWANCE



FOR LEASING INFORMATION, CONTACT

**Tyler Smith**

Senior Vice President

602.513.5136

tyler.smith@kidder.com

**Rachael Thompson**

Vice President

602.513.5122

rachael.thompson@kidder.com

[PARKAT25TH.COM](http://PARKAT25TH.COM)



**Kidder  
Mathews**

THIS INFORMATION SUPPLIED HEREIN IS FROM SOURCES WE DEEM RELIABLE. IT IS PROVIDED WITHOUT ANY REPRESENTATION, WARRANTY, OR GUARANTEE, EXPRESSED OR IMPLIED AS TO ITS ACCURACY. PROSPECTIVE BUYER OR TENANT SHOULD CONDUCT AN INDEPENDENT INVESTIGATION AND VERIFICATION OF ALL MATTERS DEEMED TO BE MATERIAL, INCLUDING, BUT NOT LIMITED TO, STATEMENTS OF INCOME AND EXPENSES. CONSULT YOUR ATTORNEY, ACCOUNTANT, OR OTHER PROFESSIONAL ADVISOR.

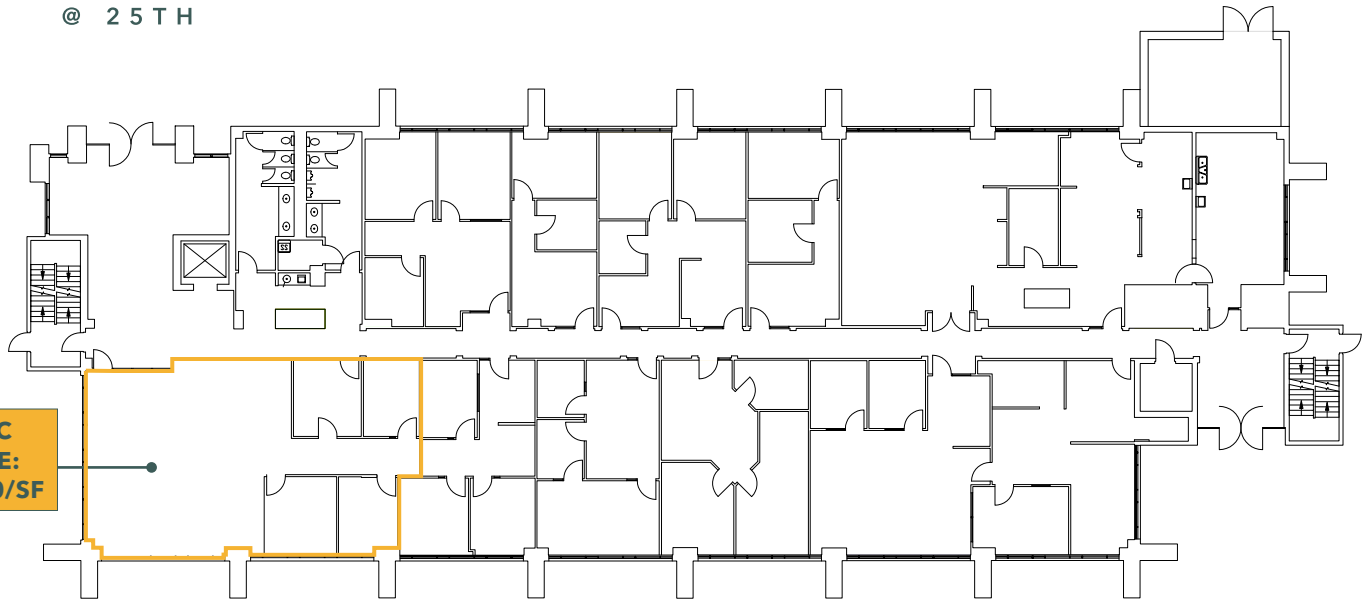


# PARK

@ 25TH

**BUILDING 10040**

**FLOOR 1**



**SPEC  
SUITE:  
\$23.50/SF**

**2,275**

SQUARE FEET AVAILABLE

**\$22/SF**

FULL SERVICE LEASE RATE

**NEGOTIABLE**

TI ALLOWANCE

**FOR LEASING INFORMATION, CONTACT**

**Tyler Smith**

Senior Vice President

602.513.5136

tyler.smith@kidder.com

**Rachael Thompson**

Vice President

602.513.5122

rachael.thompson@kidder.com

[PARKAT25TH.COM](http://PARKAT25TH.COM)



**Kidder  
Mathews**

THIS INFORMATION SUPPLIED HEREIN IS FROM SOURCES WE DEEM RELIABLE. IT IS PROVIDED WITHOUT ANY REPRESENTATION, WARRANTY, OR GUARANTEE, EXPRESSED OR IMPLIED AS TO ITS ACCURACY. PROSPECTIVE BUYER OR TENANT SHOULD CONDUCT AN INDEPENDENT INVESTIGATION AND VERIFICATION OF ALL MATTERS DEEMED TO BE MATERIAL, INCLUDING, BUT NOT LIMITED TO, STATEMENTS OF INCOME AND EXPENSES. CONSULT YOUR ATTORNEY, ACCOUNTANT, OR OTHER PROFESSIONAL ADVISOR.



PARK

@ 25TH

BUILDING 10040  
SUITE 100

2,275

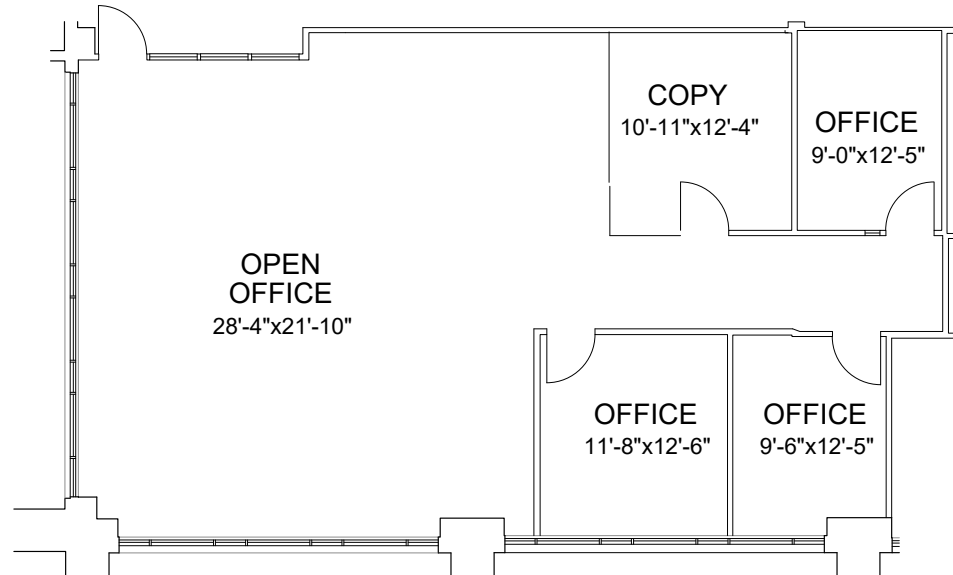
SQUARE FEET AVAILABLE

\$23.50/SF

FULL SERVICE LEASE RATE

SPEC

SUITE



FOR LEASING INFORMATION, CONTACT

**Tyler Smith**

Senior Vice President  
602.513.5136  
tyler.smith@kidder.com

**Rachael Thompson**

Vice President  
602.513.5122  
rachael.thompson@kidder.com

[PARKAT25TH.COM](http://PARKAT25TH.COM)



**Kidder  
Mathews**

THIS INFORMATION SUPPLIED HEREIN IS FROM SOURCES WE DEEM RELIABLE. IT IS PROVIDED WITHOUT ANY REPRESENTATION, WARRANTY, OR GUARANTEE, EXPRESSED OR IMPLIED AS TO ITS ACCURACY. PROSPECTIVE BUYER OR TENANT SHOULD CONDUCT AN INDEPENDENT INVESTIGATION AND VERIFICATION OF ALL MATTERS DEEMED TO BE MATERIAL, INCLUDING, BUT NOT LIMITED TO, STATEMENTS OF INCOME AND EXPENSES. CONSULT YOUR ATTORNEY, ACCOUNTANT, OR OTHER PROFESSIONAL ADVISOR.



# PARK

@ 25TH

## 15,195

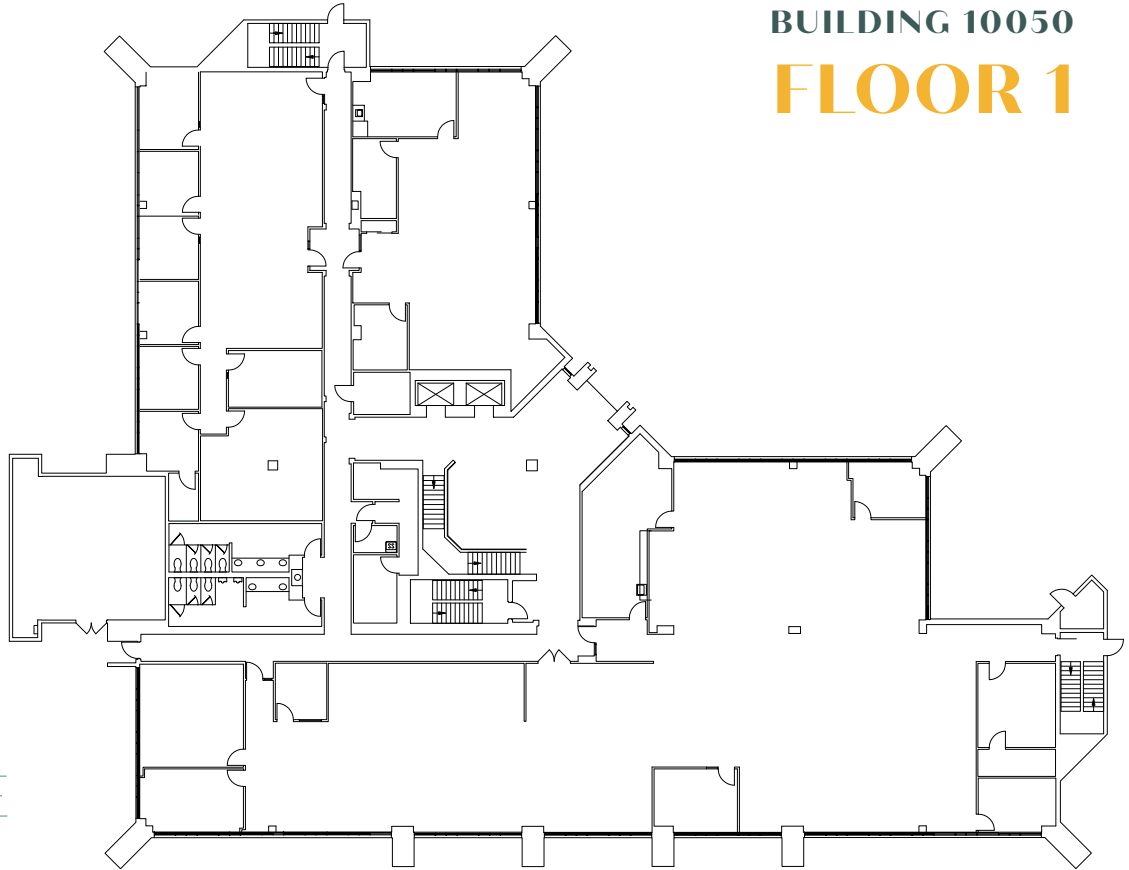
SQUARE FEET AVAILABLE

## \$22/SF

FULL SERVICE LEASE RATE

## NEGOTIABLE

TI ALLOWANCE



**BUILDING 10050**

**FLOOR 1**

### FOR LEASING INFORMATION, CONTACT

#### Tyler Smith

Senior Vice President  
602.513.5136  
tyler.smith@kidder.com

#### Rachael Thompson

Vice President  
602.513.5122  
rachael.thompson@kidder.com

[PARKAT25TH.COM](http://PARKAT25TH.COM)



**Kidder  
Mathews**

THIS INFORMATION SUPPLIED HEREIN IS FROM SOURCES WE DEEM RELIABLE. IT IS PROVIDED WITHOUT ANY REPRESENTATION, WARRANTY, OR GUARANTEE, EXPRESSED OR IMPLIED AS TO ITS ACCURACY. PROSPECTIVE BUYER OR TENANT SHOULD CONDUCT AN INDEPENDENT INVESTIGATION AND VERIFICATION OF ALL MATTERS DEEMED TO BE MATERIAL, INCLUDING, BUT NOT LIMITED TO, STATEMENTS OF INCOME AND EXPENSES. CONSULT YOUR ATTORNEY, ACCOUNTANT, OR OTHER PROFESSIONAL ADVISOR.



PARK

@ 25TH

15,965

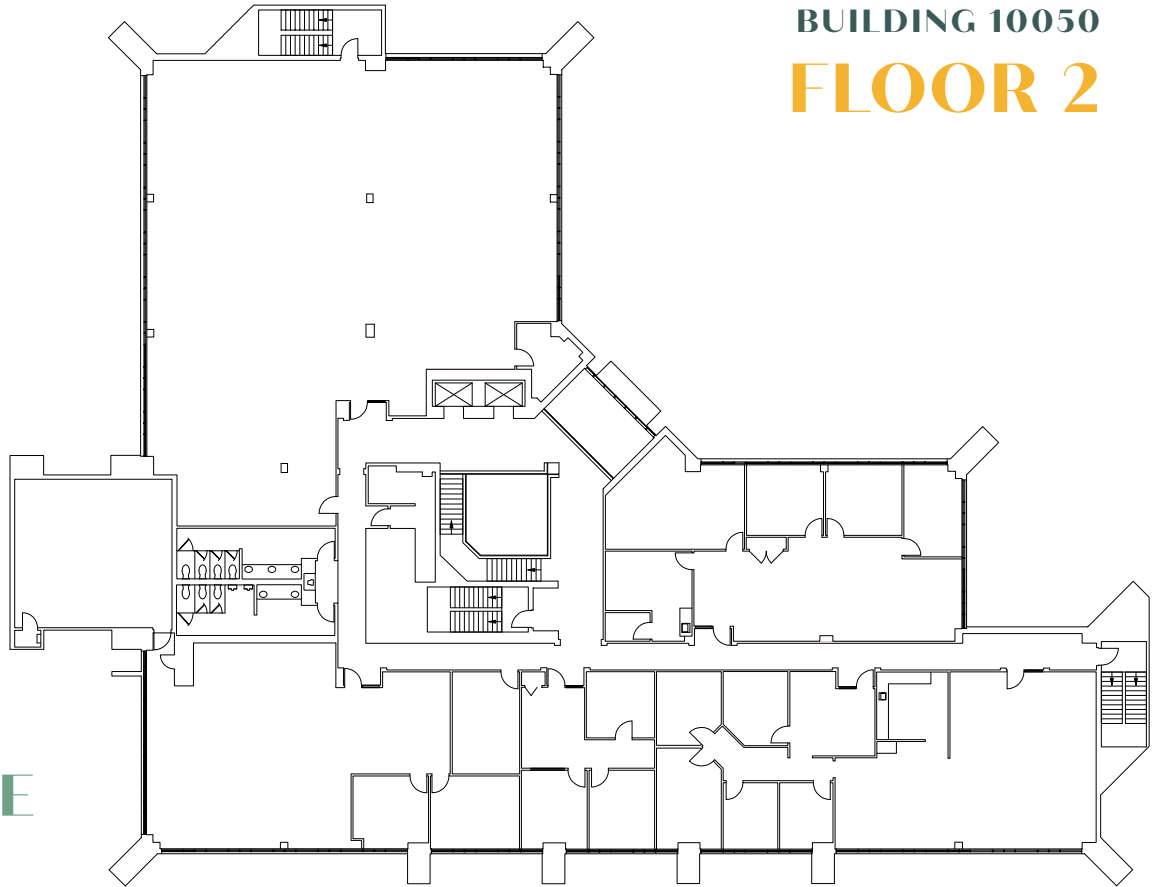
SQUARE FEET AVAILABLE

\$22/SF

FULL SERVICE LEASE RATE

NEGOTIABLE

TI ALLOWANCE



BUILDING 10050

FLOOR 2

FOR LEASING INFORMATION, CONTACT

**Tyler Smith**

Senior Vice President  
602.513.5136  
tyler.smith@kidder.com

**Rachael Thompson**

Vice President  
602.513.5122  
rachael.thompson@kidder.com

[PARKAT25TH.COM](http://PARKAT25TH.COM)



THIS INFORMATION SUPPLIED HEREIN IS FROM SOURCES WE DEEM RELIABLE. IT IS PROVIDED WITHOUT ANY REPRESENTATION, WARRANTY, OR GUARANTEE, EXPRESSED OR IMPLIED AS TO ITS ACCURACY. PROSPECTIVE BUYER OR TENANT SHOULD CONDUCT AN INDEPENDENT INVESTIGATION AND VERIFICATION OF ALL MATTERS DEEMED TO BE MATERIAL, INCLUDING, BUT NOT LIMITED TO, STATEMENTS OF INCOME AND EXPENSES. CONSULT YOUR ATTORNEY, ACCOUNTANT, OR OTHER PROFESSIONAL ADVISOR.



# PARK

@ 25TH

## 16,602

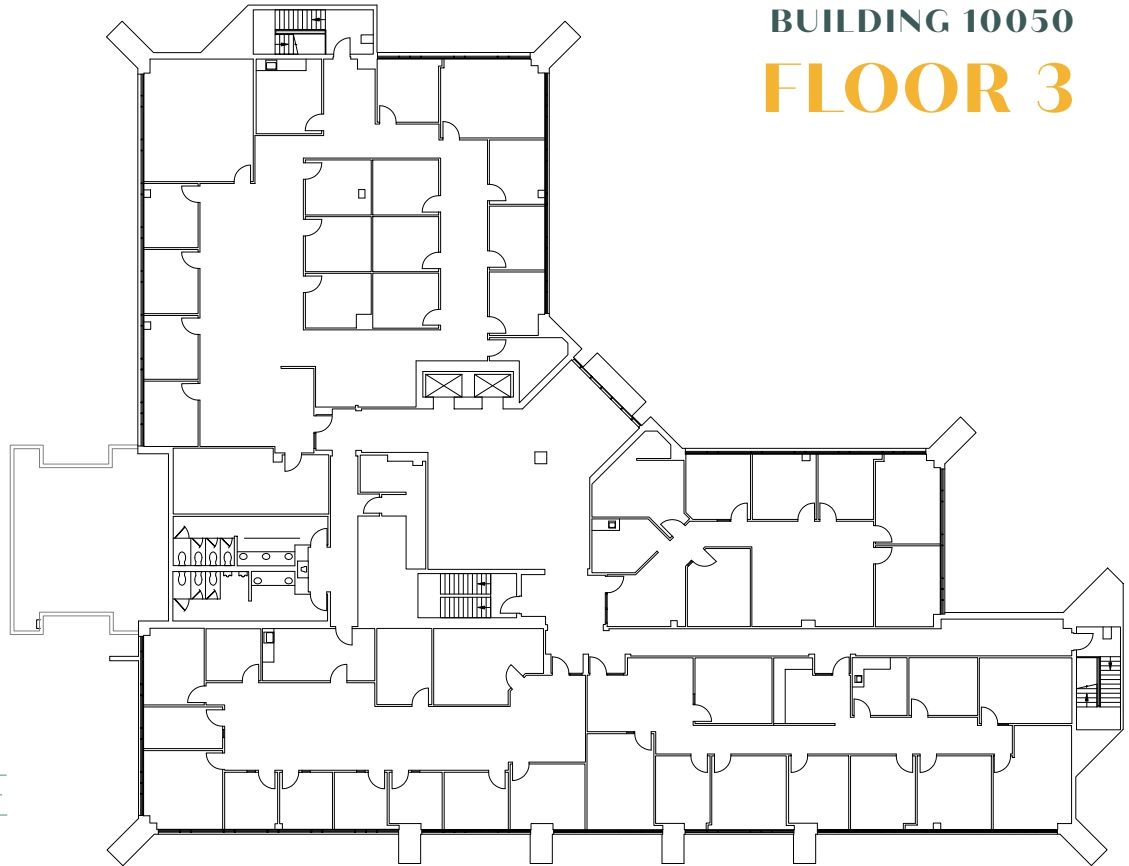
SQUARE FEET AVAILABLE

## \$22/SF

FULL SERVICE LEASE RATE

## NEGOTIABLE

TI ALLOWANCE



**BUILDING 10050**

**FLOOR 3**

### FOR LEASING INFORMATION, CONTACT

#### Tyler Smith

Senior Vice President  
602.513.5136  
tyler.smith@kidder.com

#### Rachael Thompson

Vice President  
602.513.5122  
rachael.thompson@kidder.com

[PARKAT25TH.COM](http://PARKAT25TH.COM)



THIS INFORMATION SUPPLIED HEREIN IS FROM SOURCES WE DEEM RELIABLE. IT IS PROVIDED WITHOUT ANY REPRESENTATION, WARRANTY, OR GUARANTEE, EXPRESSED OR IMPLIED AS TO ITS ACCURACY. PROSPECTIVE BUYER OR TENANT SHOULD CONDUCT AN INDEPENDENT INVESTIGATION AND VERIFICATION OF ALL MATTERS DEEMED TO BE MATERIAL, INCLUDING, BUT NOT LIMITED TO, STATEMENTS OF INCOME AND EXPENSES. CONSULT YOUR ATTORNEY, ACCOUNTANT, OR OTHER PROFESSIONAL ADVISOR.



# PARK

@ 25TH

## 8,993

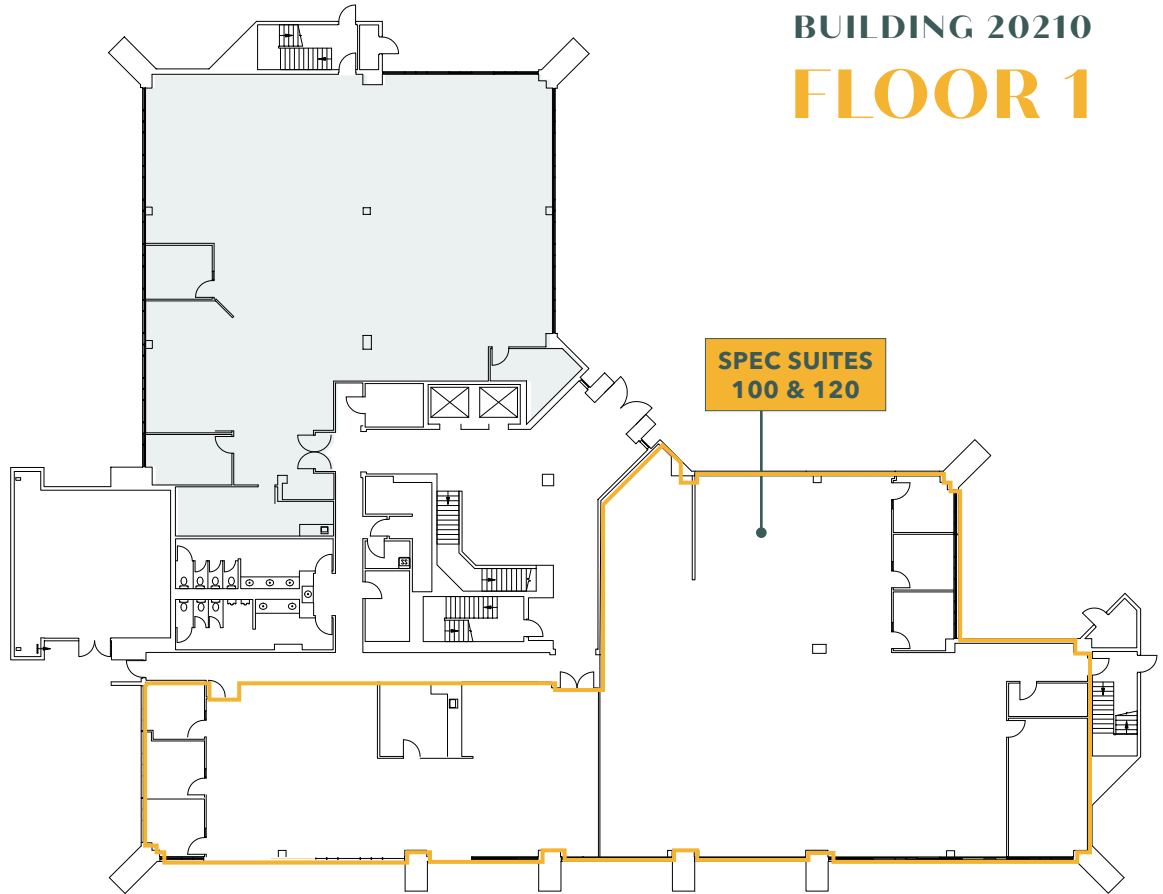
SQUARE FEET AVAILABLE

## \$23.50/SF

FULL SERVICE LEASE RATE

## SPEC

SUITES



## BUILDING 20210 FLOOR 1

\*spec suites are divisible to 3,092 SF and 5,901 SF

### FOR LEASING INFORMATION, CONTACT

#### Tyler Smith

Senior Vice President  
602.513.5136  
tyler.smith@kidder.com

#### Rachael Thompson

Vice President  
602.513.5122  
rachael.thompson@kidder.com

[PARKAT25TH.COM](http://PARKAT25TH.COM)



THIS INFORMATION SUPPLIED HEREIN IS FROM SOURCES WE DEEM RELIABLE. IT IS PROVIDED WITHOUT ANY REPRESENTATION, WARRANTY, OR GUARANTEE, EXPRESSED OR IMPLIED AS TO ITS ACCURACY. PROSPECTIVE BUYER OR TENANT SHOULD CONDUCT AN INDEPENDENT INVESTIGATION AND VERIFICATION OF ALL MATTERS DEEMED TO BE MATERIAL, INCLUDING, BUT NOT LIMITED TO, STATEMENTS OF INCOME AND EXPENSES. CONSULT YOUR ATTORNEY, ACCOUNTANT, OR OTHER PROFESSIONAL ADVISOR.





# PARK

@ 25TH

BUILDING 20210

## SUITE 100

### 5,901

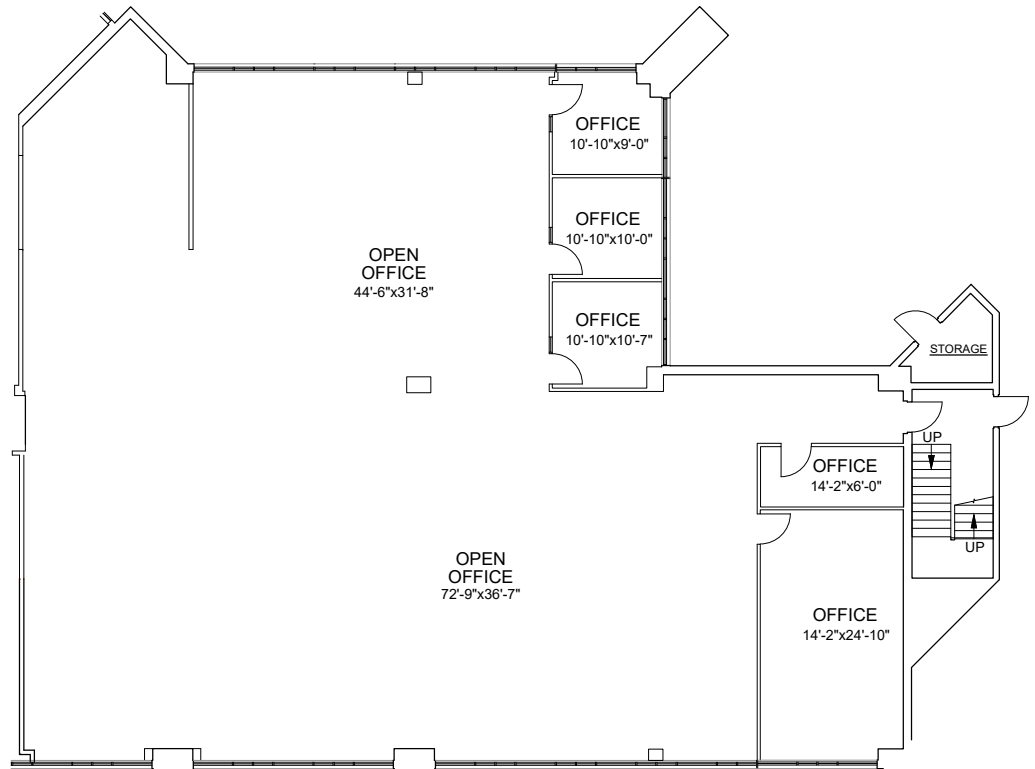
SQUARE FEET AVAILABLE

### \$23.50/SF

FULL SERVICE LEASE RATE

### SPEC

SUITE



FOR LEASING INFORMATION, CONTACT

**Tyler Smith**

Senior Vice President

602.513.5136

tyler.smith@kidder.com

**Rachael Thompson**

Vice President

602.513.5122

rachael.thompson@kidder.com

[PARKAT25TH.COM](http://PARKAT25TH.COM)



**Kidder  
Mathews**

THIS INFORMATION SUPPLIED HEREIN IS FROM SOURCES WE DEEM RELIABLE. IT IS PROVIDED WITHOUT ANY REPRESENTATION, WARRANTY, OR GUARANTEE, EXPRESSED OR IMPLIED AS TO ITS ACCURACY. PROSPECTIVE BUYER OR TENANT SHOULD CONDUCT AN INDEPENDENT INVESTIGATION AND VERIFICATION OF ALL MATTERS DEEMED TO BE MATERIAL, INCLUDING, BUT NOT LIMITED TO, STATEMENTS OF INCOME AND EXPENSES. CONSULT YOUR ATTORNEY, ACCOUNTANT, OR OTHER PROFESSIONAL ADVISOR.

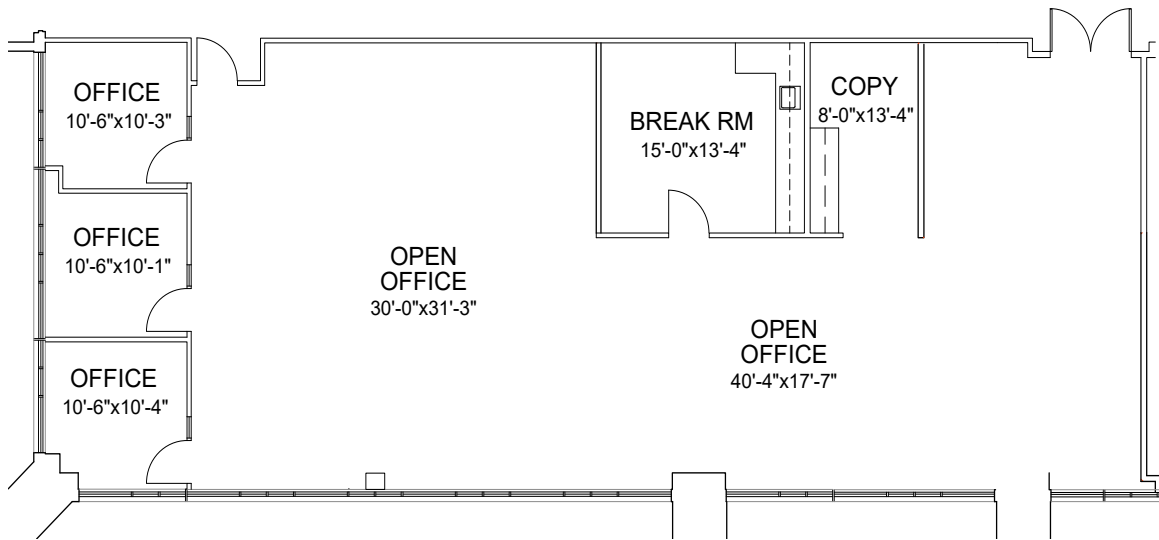


PARK

@ 25TH

BUILDING 20210

SUITE 120



**3,092**

SQUARE FEET AVAILABLE

**\$23.50/SF**

FULL SERVICE LEASE RATE

**SPEC**

SUITE

FOR LEASING INFORMATION, CONTACT

**Tyler Smith**

Senior Vice President  
602.513.5136  
tyler.smith@kidder.com

**Rachael Thompson**

Vice President  
602.513.5122  
rachael.thompson@kidder.com

[PARKAT25TH.COM](http://PARKAT25TH.COM)



THIS INFORMATION SUPPLIED HEREIN IS FROM SOURCES WE DEEM RELIABLE. IT IS PROVIDED WITHOUT ANY REPRESENTATION, WARRANTY, OR GUARANTEE, EXPRESSED OR IMPLIED AS TO ITS ACCURACY. PROSPECTIVE BUYER OR TENANT SHOULD CONDUCT AN INDEPENDENT INVESTIGATION AND VERIFICATION OF ALL MATTERS DEEMED TO BE MATERIAL, INCLUDING, BUT NOT LIMITED TO, STATEMENTS OF INCOME AND EXPENSES. CONSULT YOUR ATTORNEY, ACCOUNTANT, OR OTHER PROFESSIONAL ADVISOR.



PARK

@ 25TH

16,221

SQUARE FEET AVAILABLE

\$22/SF

FULL SERVICE LEASE RATE

NEGOTIABLE

TI ALLOWANCE



BUILDING 20210  
FLOOR 2

FOR LEASING INFORMATION, CONTACT

**Tyler Smith**

Senior Vice President  
602.513.5136  
tyler.smith@kidder.com

**Rachael Thompson**

Vice President  
602.513.5122  
rachael.thompson@kidder.com

[PARKAT25TH.COM](http://PARKAT25TH.COM)



**Kidder  
Mathews**

THIS INFORMATION SUPPLIED HEREIN IS FROM SOURCES WE DEEM RELIABLE. IT IS PROVIDED WITHOUT ANY REPRESENTATION, WARRANTY, OR GUARANTEE, EXPRESSED OR IMPLIED AS TO ITS ACCURACY. PROSPECTIVE BUYER OR TENANT SHOULD CONDUCT AN INDEPENDENT INVESTIGATION AND VERIFICATION OF ALL MATTERS DEEMED TO BE MATERIAL, INCLUDING, BUT NOT LIMITED TO, STATEMENTS OF INCOME AND EXPENSES. CONSULT YOUR ATTORNEY, ACCOUNTANT, OR OTHER PROFESSIONAL ADVISOR.



PARK

@ 25TH

16,815

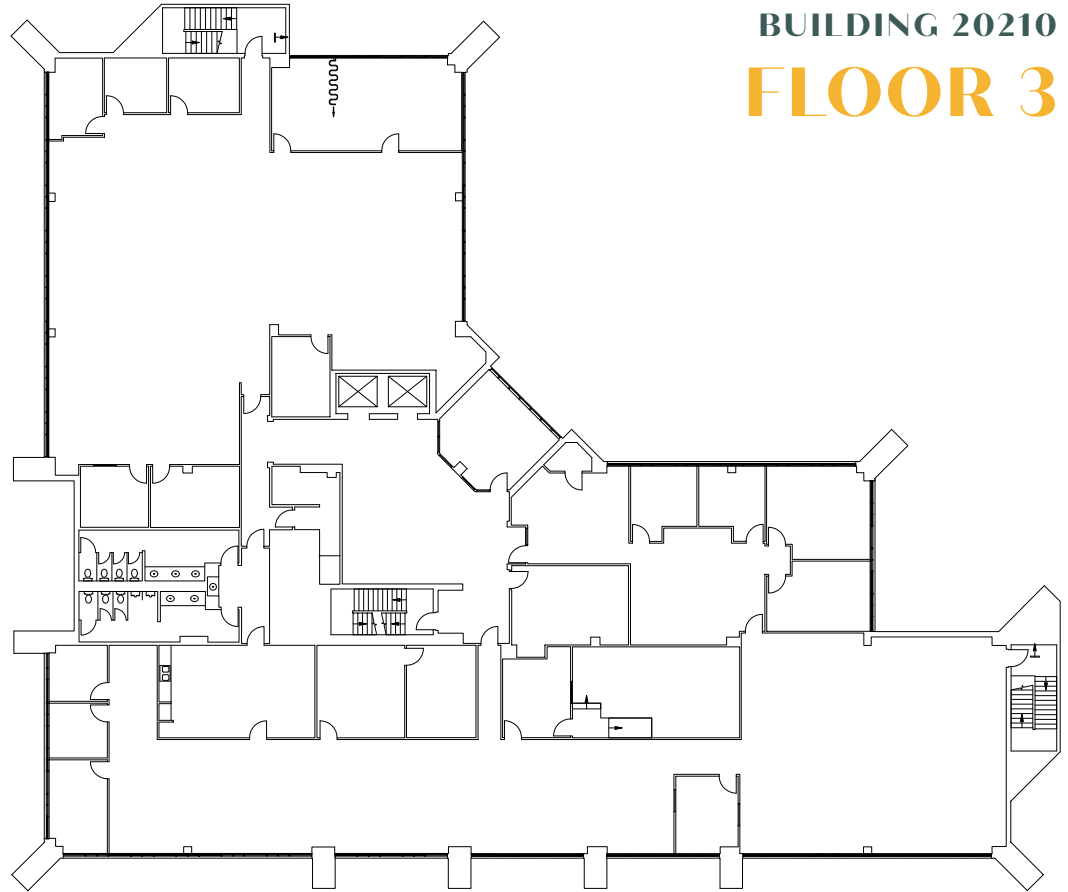
SQUARE FEET AVAILABLE

\$22/SF

FULL SERVICE LEASE RATE

NEGOTIABLE

TI ALLOWANCE



BUILDING 20210  
FLOOR 3

### FOR LEASING INFORMATION, CONTACT

#### Tyler Smith

Senior Vice President  
602.513.5136  
tyler.smith@kidder.com

#### Rachael Thompson

Vice President  
602.513.5122  
rachael.thompson@kidder.com

[PARKAT25TH.COM](http://PARKAT25TH.COM)



THIS INFORMATION SUPPLIED HEREIN IS FROM SOURCES WE DEEM RELIABLE. IT IS PROVIDED WITHOUT ANY REPRESENTATION, WARRANTY, OR GUARANTEE, EXPRESSED OR IMPLIED AS TO ITS ACCURACY. PROSPECTIVE BUYER OR TENANT SHOULD CONDUCT AN INDEPENDENT INVESTIGATION AND VERIFICATION OF ALL MATTERS DEEMED TO BE MATERIAL, INCLUDING, BUT NOT LIMITED TO, STATEMENTS OF INCOME AND EXPENSES. CONSULT YOUR ATTORNEY, ACCOUNTANT, OR OTHER PROFESSIONAL ADVISOR.