



# EASTLAKE BUSINESS PARK

18336-18398 Redmond-Fall City Road | Redmond, WA 98052

**Caleb Farnworth, CCIM**

425.289.2235

calebf@rosenharbottle.com

**Stossi Tsantilas**

425.279.7943

stossit@rosenharbottle.com

425.454.3030  
rosenharbottle.com

PO Box 5003  
Bellevue, WA 98009 - 5003





# BEAUTIFUL VIEW OF MARYMOOR PARK AND BELLEVUE

**2,112 SF - 15,476 SF Available**

**\$25/SF, NNN**

## PROPERTY DETAILS:

- Professional, Business Park Setting
- Quick Access to SR 520, Union Hill & Downtown Redmond
- Nearby Amenities Include Home Depot, Whole Foods, Chipotle, Target, Kohl's, Costco & More
- Located Minutes From Future Light Rail Stations

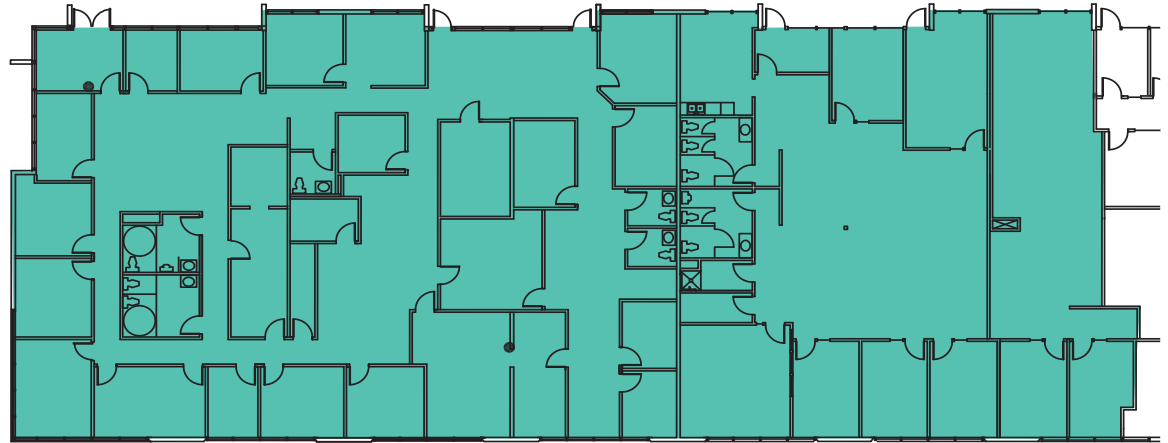
The information provided herein has been obtained from sources believed to be reliable, but no representation or warranty, express or implied, is made with respect to the accuracy or completeness of any such information. Each prospective buyer or tenant should independently investigate, evaluate and verify all information provided herein and any other matters deemed material. Please consult your attorney, tax advisor or other professional advisor. The terms of sale or lease set forth herein are subject to change or withdrawal at any time and without notice.



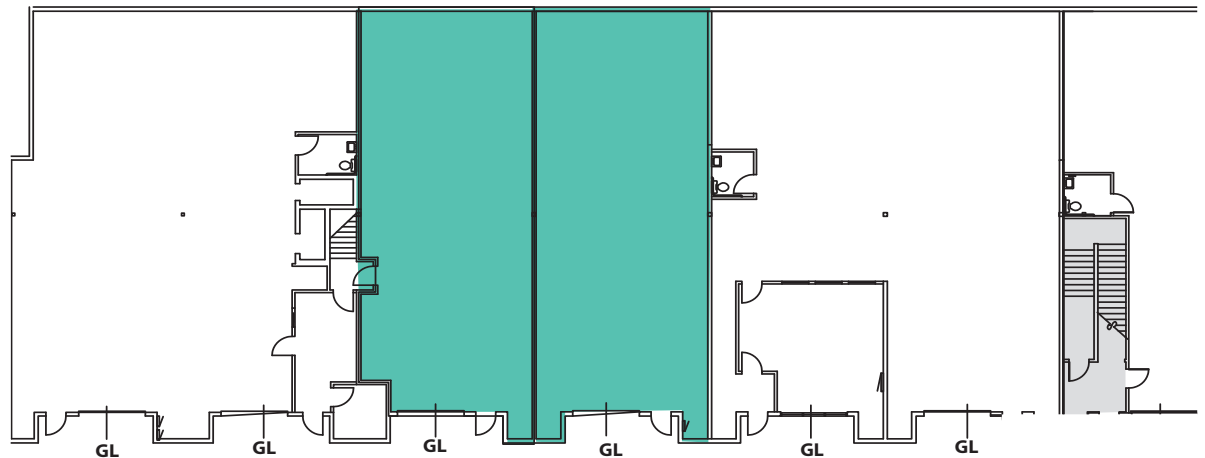
# BUILDING A FLOOR PLAN

## SUITE 18360-18378 FEATURES

- Available 1/1/2027
- 15,476 SF Total
  - 11,953 SF office
  - 3,523 SF warehouse
- Demisable based on tenant needs
- \$25/SF/Yr, NNN
- A variety of Private Offices and Open Area, Reception, Conference Rooms, and Kitchenette/Break Room
- Beautiful View of Marymoor Park and Bellevue
- Parking ratio: 3.5 stalls per 1,000 SF office

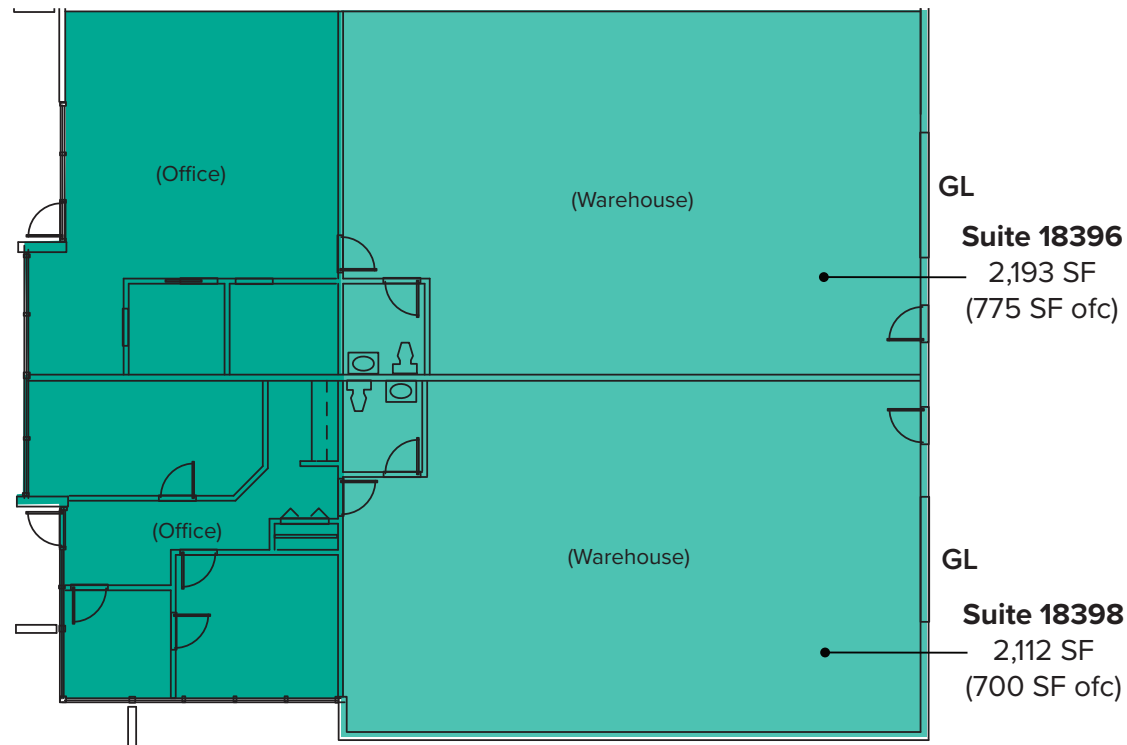


Suites 18360 - 18378 = 15,476 SF Total



# BUILDING D FLOOR PLAN

Suite	Square Feet	Rent	Notes
18396	2,193 SF (775 SF Ofc)	\$25/SF/Yr, NNN	Warehouse/office space with 2 private offices, conference room, 1 restroom and kitchenette. 1 Grade-Level door, 14'-16' CH. <b>Available with 30 Days' Notice.</b>
18398	2,112 SF (700 SF Ofc)	\$25/SF/Yr, NNN	Industrial space, includes office area with 2 private rooms, 1 restroom, and warehouse area. 1 Grade-Level door. 14'-16' CH. <b>Available Now.</b>



# LOCATION MAP



# LOCATION MAP

